

Canon

imageRUNNER™
3300



imageRUNNER™
3300

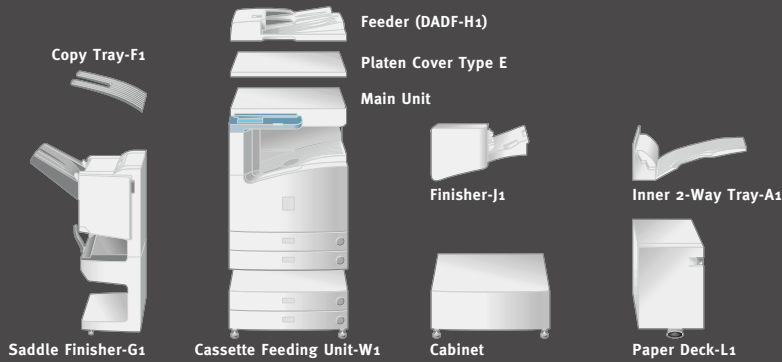


A NEW-GENERATION, DIGITAL-MULTIFUNCTION WORKGROUP SOLUTION FROM THE INDUSTRY LEADER.

**Introducing the new imageRUNNER™ 3300 from Canon—
offering unsurpassed performance in stand-alone or
networked document-management environments.**

Built upon Canon's newly developed, network-oriented architecture, termed imagePlatform, the imageRUNNER 3300 offers 33-page-per-minute speed, with advanced copy, print, scan, and fax features, and the highest level of image quality, network integration, and elevated multitasking capabilities on the market. Designed specifically for the needs of corporate workgroups, the imageRUNNER 3300 allows your organization to manage its hard-copy and electronic-based information, regardless of form, content, or location, to give you the level of efficiency you are accustomed to, plus a competitive advantage.





imageRUNNER 3300 Specifications

Main Unit

Type:	Digital, Multifunction Imaging System
Imaging System:	Laser Dry Electrostatic Transfer
Developing System:	Dry Monocomponent Toner Projection
Fixing System:	RAPID Fusing System
Image Server Memory:	Standard 128MB RAM + 5.1GB HDD (Max. Capacity: Approx. 4,000 Originals)
First-copy Time:	5.8 Seconds from Platen Glass 6.6 Seconds from ADF
Warm-up Time:	10 Seconds or Less From Sleep Mode 29 Seconds from Main Power Off
Copy/Print Speed:	33 ppm (Letter)
Max. Mail Boxes Supported:	100
Max. Copy Reservation:	5 Jobs
Actual Resolution:	600 dpi x 600 dpi
Interpolated Resolution:	1200 dpi x 600 dpi (Copy) 2400 dpi x 600 dpi (Print)
Halftone:	256 Gradations of Gray
Duplexing:	Standard Automatic Trayless Duplexing
Magnification Reduction/Enlargement:	25% to 800% (in 1% increments)
Paper Supply Standard:	Dual 500-sheet Paper Cassettes (1,000 Sheets) Stack Bypass (50 Sheets)
Optional:	Dual 500-sheet Paper Cassettes (1,000 Sheets) Paper Deck (2,500 Sheets)
Exposure Control:	Automatic or Manual
Multiple Copies:	1 to 999
Max. Original Size:	11" x 17" (Ledger)
Paper Weights:	17 lb. to 20 lb. Bond (Cassette) 17 lb. to 32 lb. Bond (Stack Bypass)
Power Source:	120V AC, 60Hz, 15A
Drum:	OPC—Estimated Yield: 55,000 Impressions
Max. Duty Cycle:	120,000 Impressions Per Month
Toner:	Estimated Yield: 15,000 Images (at 6% Coverage)
Dimensions (H x W x D):	40-1/8" x 22-1/4" x 26-3/4" (1,020mm x 565mm x 678mm)
Weight:	176.3 lb. (80kg)

Duplexing Automatic Document Feeder-H1 (Optional)

Acceptable Originals:	Statement-R to Ledger
Capacity:	50 Sheets (20 lb. Bond, Letter)
Max. Paper Weight:	10 lb. to 32 lb. Bond (Letter)

Cassette Feeding Unit-W1 (Optional)

Paper Capacity:	2 x 500-sheet Paper Cassettes
Paper Size:	
Top Cassette:	Statement-R to Legal
Bottom Cassette:	Statement-R to Ledger
Paper Weights:	17 lb. to 20 lb. Bond

Envelope Feeder Attachment-B1 (Optional)

Envelope Size:	COM10, DL, Monarch, ISO-B5, ISO-C5, Yougata-4
Feeder Capacity:	Approx. 50 Envelopes or 1-1/4" (31.75mm)

Paper Deck-L1 (Optional)

Paper Capacity:	2,500 Sheets (20 lb. Bond)
Paper Size:	Letter
Paper Weights:	17 lb. to 20 lb. Bond

Finisher-J1 (Optional)

Number of Trays:	One Tray
Tray Capacity:	300 Sheets (Letter)
Staple Position/Capacity:	Top Corner (30 Sheets)

Saddle Finisher-G1 (Optional)

Number of Trays:	Four trays, including Saddle-stitch Tray and Inner 2-Way Tray
------------------	---

Tray Capacity

Top Tray:	1,000 Sheets (Letter)
Inner 2-Way Tray:	100 Sheets (Letter) 250 Sheets (Letter) 500 Sheets
Saddle-stitch Tray:	500 Sheets
Staple Position:	Multiposition Stapling (1) Top Corner, (2) Side Margin, (3) Saddle-stitch
Stapling Capacity:	50 Sheets (Letter) 10 Sheets Saddle-stitched (Letter, Ledger)

Saddle-stitch Specifications

Total Sides Imaged:	40 (10 Sheets)
Total Sets:	1 to 5 Sheets/20 Saddle-stitched Sets 6 to 10 Sheets/10 Saddle-stitched Sets
Folding:	V-folding Standard
Attachable Accessories:	Puncher Unit-K1

Puncher Unit-K1 (Option for Saddle Finisher-G1)

Punch Method:	Sequential Processing System
Punch Types:	2-hole/3-hole (Auto Change)
Paper Sizes:	2-hole (Letter-R, Legal) 3-hole (Letter, Ledger)
Punch Dust Stack:	Approx. 3,000 Sheets

Super G3 Fax Board-J1 (Optional)*

Applicable Line:	Public Switched Telephone Network (PSTN)
Connection Lines:	One (J1)
Transmission Time**:	ECM-MMR Approx. 3 Seconds per Page (33,600 bps)
Compression System:	MMR, MR, MH, JBIG
Sending Sizes:	Statement to Ledger
Auto Dial Function:	Address Book: 200 Destinations
Image Memory:	Approx. 3,700 Pages

Network Multi-PDL Printer Kit-C1 (Optional)

Type:	Embedded Print/Network
Processor:	Canon Custom Processor 250MHz—Shared
RAM:	128MB (Std./Max.)—Shared
Hard Disk:	5.1GB—Shared
PDL Support:	PCL 5e, PCL 6, PostScript 3 Emulation
Internal Fonts:	136 PostScript Fonts, 117 Adobe® Type Fonts, 19 TrueType® Fonts, 80 PCL Roman Fonts, 32 PCL Bar-code Fonts
Interface Connections:	RJ-45 (10/100Base-T) IEEE 1284 (Compatibility: Nibble, Byte and ECP mode) Token Ring* (Optional Card)
Protocol Stacks:	IPX/SPX™: 802.2, 802.3, Ethernet II, 802.2 SNAP, TCP/IP, SMB AppleTalk®: 802.2 SNAP and AppleTalk Phase II Only
Network OS:	Novell® NetWare® v.3.2, 4.1, 4.11, 4.2, 5 (IPX/SPX), Windows® 95/98/Me (TCP/IP), Windows NT® 4.0 (TCP/IP), Windows 2000 (TCP/IP), Solaris™ 1.x, 2.5 or later (TCP/IP), Apple® System 7.5 or higher (DDP)

*Available second half 2001.

Check with your local Canon-authorized Dealer for availability.

**Approximate 3-second-per-page fax transmission time based on ITU-T No. 1 Chart (MMR, Standard Mode) at 33.6 Kbps modem speed when transmitting to another v.34 machine. The Public Switched Telephone Network (PSTN) currently supports 28.8 Kbps modem speeds or lower, depending on telephone line conditions.

Canon KNOW HOW™

As an ENERGY STAR® Partner, Canon U.S.A., Inc. has determined that this product meets the ENERGY STAR® guidelines for energy efficiency. The ENERGY STAR name is a registered trademark of the U.S. Environmental Protection Agency. Adobe and PostScript are trademarks of Adobe Systems Incorporated. HP, PCL, and OpenView are registered trademarks of Hewlett-Packard Company. Unicenter TNG is a registered trademark of Computer Associates International. Tivoli and NetView are registered trademarks of Tivoli Systems Inc., in the United States, other countries, or both. Patrol is a registered trademark of BMC Software, Inc. Apple, AppleTalk, and TrueType are registered trademarks of Apple Computer, Inc. Novell and NetWare are registered trademarks, and IPX/SPX is a trademark of Novell, Inc. in the United States and other countries. Microsoft, PowerPoint, Windows, and Windows NT are registered trademarks of Microsoft Corporation in the United States and/or other countries. Solaris is a trademark of Sun Microsystems, Inc. Canon and NetSpot are registered trademarks, and IMAGERUNNER, RAPID Fusing System, Canon Know How, and the GENUINE logo are trademarks of Canon Inc. Remote UI is a trademark, and IMAGEANYWARE is a service mark of Canon U.S.A., Inc. All other terms and product names may be trademarks or registered trademarks of their respective owners, and are hereby acknowledged.

Specifications subject to change without notice.



1-800-OK-CANON
www.usa.canon.com

Canon U.S.A., Inc.
One Canon Plaza
Lake Success, NY 11042

Canon



PRODUCTION SOLUTIONS



meap
POWERED BY I



imageRUNNER®
7105 / 7095 / 7086

CHALLENGE YOUR DOCUMENT PRODUCTION CAPABILITIES

The imageRUNNER 7105, imageRUNNER 7095, and imageRUNNER 7086 devices will redefine your expectations for total in-house black-and-white document production.

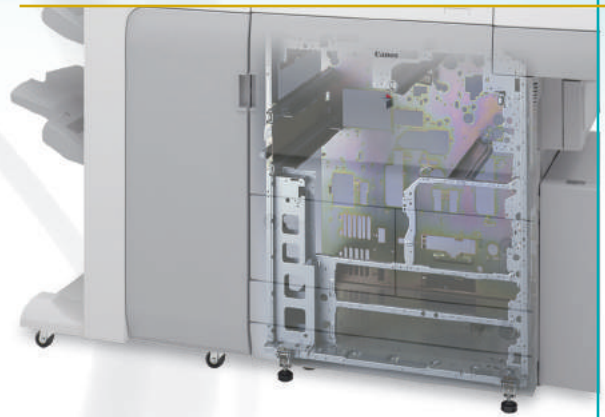
PRODUCTIVITY

While their output speeds are impressive, it's what Canon has done to each system's internal design that's truly inspiring. Every model features dual Canon custom processor technology to handle sophisticated applications with incredible speed. With available support for actual 1200 x 1200 dpi* print resolution and Canon's exclusive Fine Character and Edge Technology (FCET), you can count on outstanding image quality on every page.



Color LCD panel

Job programming is a breeze, thanks to an oversized color LCD user interface panel that clearly displays available modes and functions. From the desktop, intuitively designed drivers and utilities guide connected users through jobs with point-and-click simplicity.



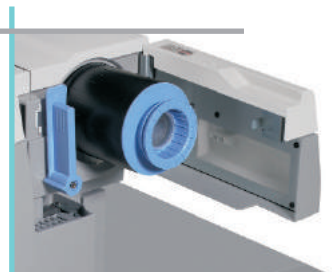
A sturdy engine design provides maximum durability

RELIABILITY

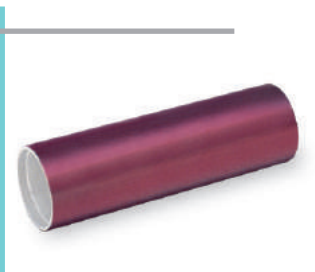
Each imageRUNNER 7105/7095/7086 device is infused with the strength and power needed to withstand the daily punishment of production environments. A sturdy, reinforced frame offers rock-solid stability, while multifeed detection technology stands guard against double-feeds and lost productivity. These improvements, along with high-durability parts and components, add up to superior reliability for environments producing huge volumes of pages every month.

DURABILITY

Set new expectations for uptime and maintenance requirements. A high-capacity toner bottle design provides quick and clean replacement and can be changed while the machine is running for non-stop productivity. And with a long-lasting 6,000,000-impression Amorphous-Silicon (A-Si) drum, the imageRUNNER 7105/7095/7086 devices deliver low operating costs and less downtime.



"Set-On" Toner Bottle



A-Si Drum

* Available when printing with Canon UFR II and PostScript 3 page description languages.

Connectivity Options

Universal Send Kit-E1

Sending Method:	E-mail, I-fax, File Server (IPX, FTP, SMB), User Inbox
Address Book Capacity:	1,800 Destinations
File Format:	Standard: TIFF, PDF Optional: PDF (OCR)
Sending Size:	Statement to 11" x 17"
Scan Density:	200/300/400/600 dpi

Canon Multi-PDL Printer Kit-H1

Processor:	Dual Canon Custom Processors
Memory:	1 GB – Shared
Storage:	40 GB – Shared
PDL Support:	PCL 5e, PCL 6, PostScript® 3 Emulation, UFR II
Resolution:	1200 x 1200 dpi: UFR II, PostScript 3 Emulation 2400 x 600 dpi (Interpolated): PCL 5e, PCL 6
Interface Connections Standard:	10/100Base-TX (RJ-45), USB 2.0 High Speed

Network OS:	Windows® 98/Me/2000/XP Windows NT® 4.0 Windows Server 2003 (TCP/IP) Solaris 1.1x, 2.5x or Later Macintosh® OS 8.0 or Later (PPD) Novell® NetWare® v3.2, 4.1, 4.11, 4.2, 5, 5.1, 6, 6.5 (IPX/SPX)
-------------	---

imagePASS-S1 Print Controller

Type:	External Stand-Alone Controller
Processor:	Intel® Celeron® D 2.8GHz
Memory:	256MB
Storage:	80GB HDD
PDL Support:	Adobe® PostScript 3, PCL 5e, PCL 6
Resolution:	1200 x 1200 dpi: PostScript 3 2400 x 600 dpi (Interpolated): PCL 5e, PCL 6
Interface Connections:	Standard: 10Base-T/100Base-TX/ 1000Base-T (RJ-45) (RJ-45), USB 2.0 High Speed

Network OS:	Windows 98/Me/2000/XP Windows Server 2003 (TCP/IP) Solaris 8 or Later Sun OS 4.1.3 or Later Macintosh OS 9.2, OSX (10.2.4) or Later Novell NetWare 4.2, 5.1, 6.5 (IPX/SPX)
-------------	---

Other Accessories

- Cassette-AB1
- Tab Feeding Attachment-A1
- Document Tray-L1
- Braille Label Kit-A1
- Control Card Reader-D1
- Control Card Sets
- Universal Send PDF Enhancement Kit-C1
- Web Access Software-C1
- Remote Operator's Software Kit-A1
- Security Expansion Board-F1
- Expansion Bus-D1
- imageRUNNER Security Kit-A2
- Voice Guidance Kit-A2
- Secure Watermark Kit-A1
- Barcode Printing Kit-A1
- Finisher Option Power Supply Unit-R1
- Stacker Dolly-A1
- Perfect Binder-A1*
- Punch Tools
- ADF Access Handle-A1
- Hot Folder for imagePASS-S1
- Impose for imagePASS-S1

* Check with your Authorized Canon Dealer for availability.

Device Dimensions and Power Requirements Chart

Product/Accessory Name	Dimensions (H x W x D)	Weight	Power
Main Unit	58" x 47-7/8" x 30-7/8" (1474mm x 1216mm x 783mm)	7105/7095: 617 lb. (280kg) 7086: 595 lb. (270kg)	208V, 60Hz, 12A
Paper Deck-W1	22-1/2" x 12-3/4" x 23" (570mm x 323mm x 583mm)	90.4 lb. (41kg)	Directly From Main Unit
Paper Deck-X1	22-5/8" x 23-3/8" x 24-1/2" (574.5mm x 593mm x 621mm)	101 lb. (46kg)	
High-Capacity Stacker-A1	50-4/5" x 33-9/10" x 30-1/5" (1290mm x 860mm x 765mm)	440 lb. (200kg)	120V, 10A
Perfect Binder-A1	53-1/2" x 36-1/5" x 30-4/5" (1360mm x 920mm x 783mm)	714 lb. (324kg)	208V, 15A
Finisher-V1	46-1/2" x 31-1/2" x 31-1/4" (1180mm x 800mm x 792mm)	278 lb. (126kg)	Directly From Main Unit* or 208V, 60Hz, 12A**
Saddle Finisher-V2	46-1/2" x 31-1/2" x 31-1/4" (1180mm x 800mm x 792mm)	392 lb. (178kg)	
Document Insertion Unit-C1	8-3/8" x 24-5/8" x 26-1/4" (213mm x 625mm x 667mm)	37.5 lb. (17kg)	From Finisher-V1 or Saddle Finisher-V2
Paper Folding Unit-D1	41" x 7-1/8" x 31" (1040mm x 179mm x 786mm)	97 lb. (44kg)	
Booklet Trimmer-B1	41" x 62-1/10" x 30-2/5" (1040mm x 1575mm x 770mm)	335 lb. (152kg)	
Professional Puncher-A1	38-1/2" x 12" x 28-1/2" (978mm x 305mm x 723mm)	154 lb. (70kg)	

* When Finisher is equipped with Paper Folding Unit-D1 and/or Document Insertion Unit-C1.

** When Finisher is equipped with Professional Puncher-A1, Booklet Trimmer-B1, High-Capacity Stacker-A1, and/or Perfect Binder-A1.

Canon
image*ANYWARE*

As an ENERGY STAR® Partner, Canon U.S.A., Inc. has determined that these products meet the ENERGY STAR guidelines for energy efficiency. ENERGY STAR and the ENERGY STAR mark are registered U.S. marks. Windows and Windows NT are registered trademarks of Microsoft Corporation in the United States and/or other countries. Adobe and PostScript are registered trademarks of Adobe Systems Incorporated in the United States and/or other countries. Macintosh is a registered trademark of Apple Computer, Inc. Intel and Celeron are registered trademarks of Intel Corporation. Novell and NetWare are registered trademarks of Novell, Inc. in the United States and other countries. Solaris and Sun are trademarks or registered trademarks of Sun Microsystems, Inc. in the United States and other countries. EFI and Command WorkStation are registered trademarks and FreeForm is a trademark of Electronics for Imaging, Inc. in the U.S. Patent and Trademark Office and certain other foreign jurisdictions. eCopy ShareScan is a trademark of eCopy, Inc. CANON, IMAGERUNNER and MEAP are registered trademarks, and UNIVERSAL SEND and the GENUINE logo are trademarks of Canon Inc. in the United States and may also be registered trademarks or trademarks in other countries. REMOTE UI is a trademark of Canon U.S.A., Inc. IMAGEWARE is a registered trademark of Canon U.S.A., Inc. in the United States and is a trademark of Canon Inc. in certain countries. IMAGEANYWARE is a trademark of Canon. All referenced product names and other marks are trademarks of their respective owners. Specifications subject to change without notice.
©2006 Canon U.S.A., Inc. All rights reserved.

1-800-OK-CANON
www.usa.canon.com

Canon U.S.A., Inc.
One Canon Plaza
Lake Success, NY 11042

