

Large size and ultra-high resolution rugged display

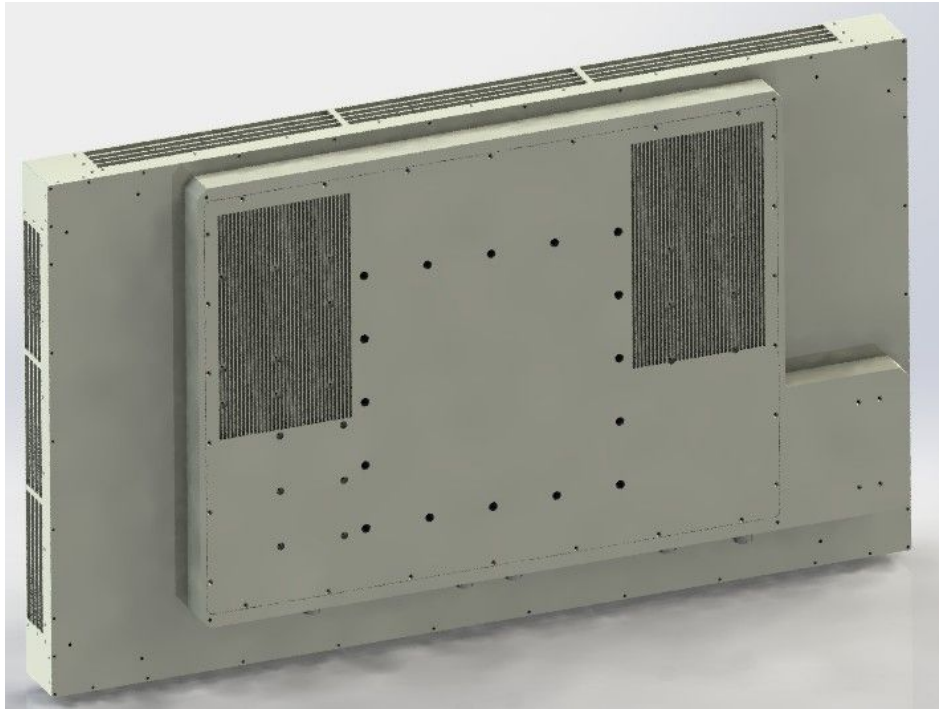
Item no.:LDX3840.2160_560_300_B600

General Description

LDX3840.2160_560_300_B600 super size, ultra high resolution LCD display meet the vehicle-borne, mobile command post field battle command system's demand for large size LCD, has achieved the function of VGA, PAL, S-VIDEO, DVI signal processing and display. It has the function of 2x2 seamless splicing with ultra high resolution. This LCD has broken large size high resolution LCD panel in vehicle-borne applications the ability and reliability to resist evil environment, as well as further perfect graphic video processing, logic control technology.

LDX3840.2160_560_300_B600 mainly used in vehicle-borne, mobile command post field battle system, the information of battlefield, electronic maps, air, land, water, attribute of underwater target could be shown timely and clearly. Assist operation command staff making decisions quickly according to the battlefield display information analysis.





Specification

Item	LDX3840.2160_560_300_B500
Resolution	3840x2160
Weight	< 100kg
Display area	1244x699mm
Display colors	16.7M
Brightness	> 600nits
Contrast ratio	> 300: 1
View angle	160(H) 160(V)
Power supply	AC 220 DC 24
Power consumption	<300W
Interface	VGA. DVI. LVDS. PAL
Working temperature	-15°C to +60°C
Storage temperature	-40°C to +70°C
Vibration	meet GJB150.16-1986

Shock	meetGJB150.18-1986
EMC	meetGJB151A-1997

Product model explanation

LDX3840.2160_560_300_B600:

LDX— —LCD display

3840.2160— —Resolution is 3840x2160

560— —Dimension of the LCD panel is 56 inch.

300— —Power consumption is not more than300W under normal temperature.

B600— —Max Brightness is more than 600 cd/m2.

Supplied by: Gus Industry (Hongkong)Co.,Limited