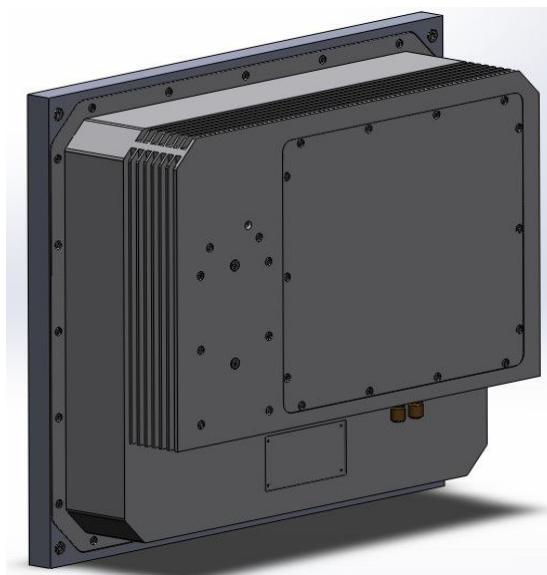
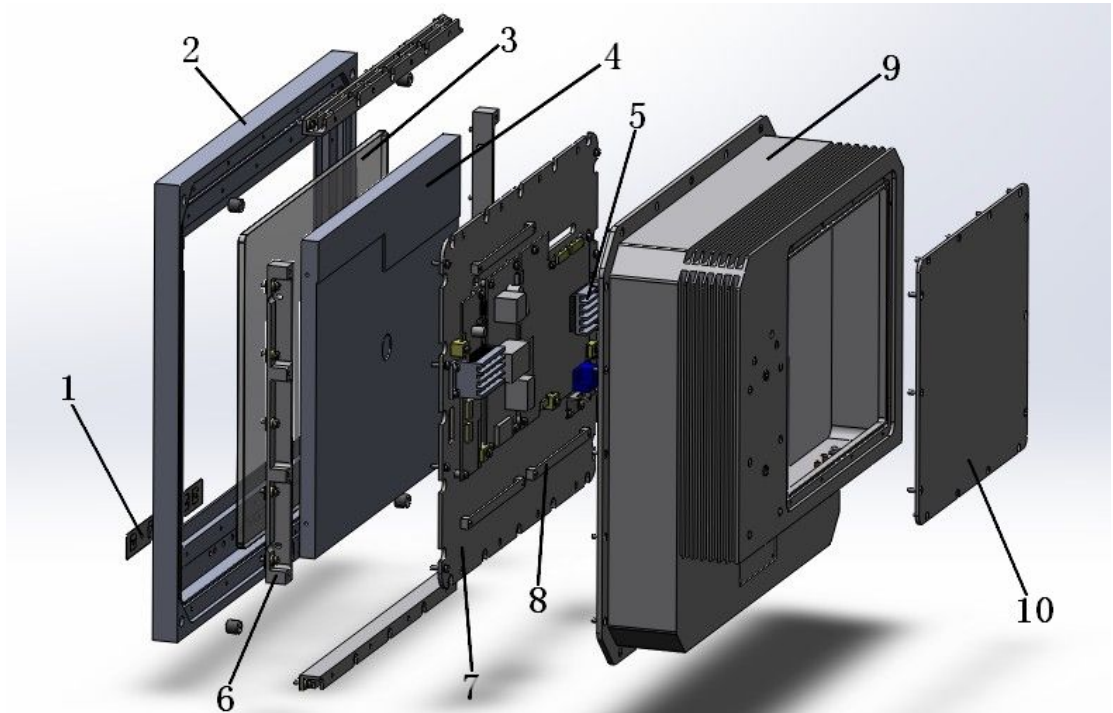


## RL15\_1024.768

### General Description

RL15\_1024.768 is a 15-inch rugged LCD designed for military application. Its wide temperature operating range ( $-10\text{ }^{\circ}\text{C} \sim 60\text{ }^{\circ}\text{C}$ ), brightness ( $250\text{cd} / \text{m}^2$ ), a variety of signal switching input forms, and providing up to four installation forms in one, including rack installation, back-hole installation, countertop installation and portable handle, enabling users to achieve multi-purpose, multi-environment use, and achieve the purpose of portability.





- 1-OSD key   2-Panel   3-Shielding glass   4-LCD screen   5-Cooling fin**  
**6-Bracket(fix the LCD screen)**  
**7-Middle clapboard(install the image board,mainboard and inverter )**  
**8-Cabling rack**  
**9-Power supply box(fix the power supply module)**  
**10-Rear cover(convenient in installation and maintenance)**

### Specification

Model	RL15_1024.768
<b>LCD panel</b>	
Dimension	15-inch
The type of panel	4: 3 TFT-LCD
Viewing angle	Horizontal viewing angle: +80° /-80°
	Vertical viewing angle : +75° /-75°
Contrast ratio	400:1
Brightness	No less than 250cd/m <sup>2</sup>

Dot pitch	0.297mm (H) × 0.297mm (V)
Best resolution	1024×768
Basic keys	Membrane Keys(menu, increasing, reducing,ensuring,open ing and closing)
Display area	304.128 (H) × 228.096 (V)
<b>Input signal</b>	
Video signal	RGB analog interface, optional composite video signal.
Synchronization signal	Horizontal frequency and vertical frequency is separated.
<b>Connection</b>	
Signal	Military aviation connector
Power	Military aviation connector
<b>Power supply</b>	
Input voltage	AC 220V (1±10%) , 50Hz
Power consumption	It is not more than 40W under operating state.
	It is not more than 80W under cold start-up state.
<b>Reliability</b>	
Reliability	MTBF: no shorter than 10000 hours
Maintainability	MTTR: no longer than 30 min
<b>Environmental applicability</b>	
Operation temperature	-10℃ ~ +55 ℃
Storage temperature	-40 ℃~ +70 ℃
Vibration	Sine sweep vibration: 5 Hz -20Hz, displacement :25.4mm; 20 Hz -500Hz, acceleration : 2g.
Shock	Pulse Waveform :half-sine wave
	Acceleration crest:30g
	Duration :11ms
	The number of test: Three times of shock are applied to each of

	the three axis directions.Total are 9 times.
EMC	Conduct test according to the requirement for the land army equipment specified in GJB151A-1997 Electromagnetic Emission and Susceptibility Requirement for Military Equipment and Subsystem.
Damp-heat	Conduct test according to the requirement specified in GJB322A-98.
Salt-fog	Conduct test according to the requirement specified in GJB 150.11-1986 Salt-Fog Test.
Drenching in rain	Conduct test according to the requirement specified in GJB 150.8-1986 Drenching Test
<b>Mechanical parameter</b>	
Dimension	400 (W) mm× 360 (H) mm ×125 (D) mm
Weight	no more than 10Kg
Color	It can be customized.

#### Product model explanation

RL15\_1024.768:

RL——Rugged LCD

15——Dimension of the LCD panel is 15 inch.

1024.768——The best resolution is 1024×768.

Supplied by:Gus Industry(Hongkong)Co.,Limited