

# Capstan

---



## SALIENT FEATURES

- Mature design, careful selection of material and quality control at different stages of manufacture ensures that Capstan meters are precise, robust and durable.
- High quality wear resistant imported materials are used. Special attention is paid to moving parts and bearings.
- Roller counter mechanism is driven through a magnetic coupling. It is completely separated from water and always stays clean and easily readable, even under adverse conditions.
- The rotor is the only part which moves in water. It has a defined two point bearing and runs on sapphire jewel bearings.
- Have equally spaced tangential holes in the measuring chamber through which the water flows and impinges on the impeller equally on all sides. There being no side thrust, the bearing wear is reduced to its minimum.
- Offer high measurement sensitivity and accuracy.
- Suitable for water temperature up to 45° C.
- Conforms to class 'B' of ISO:4064/1 and IS:779-1994 and are ISI marked.

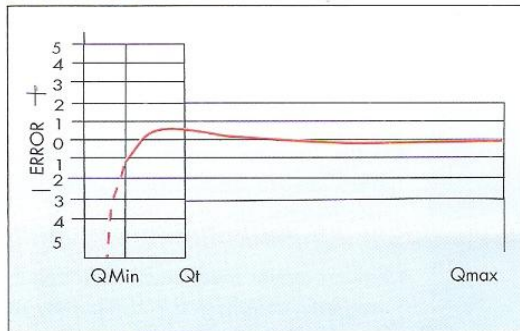
**Multi jet, dry dial, class 'B'  
domestic water meter**

---

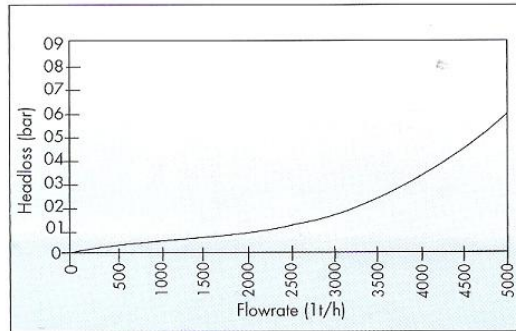
**Capstan** - The hallmark for quality and modern technology

## TECHNICAL DATA

**Accuracy Curve**

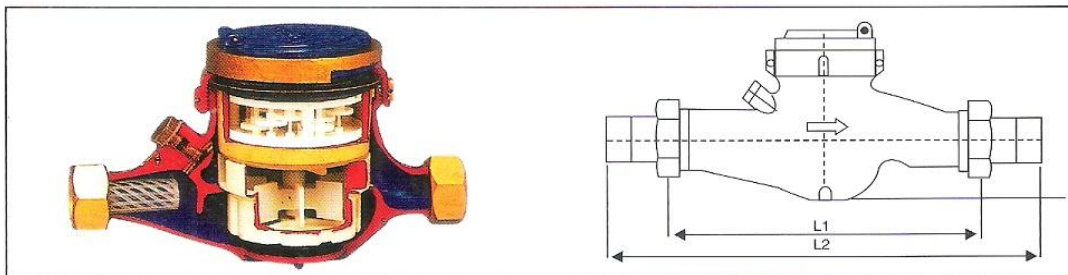


**Pressure Loss Curve**



## PERFORMANCE TABLE

Size of Meter	mm			15	20	25	40	50
Q <sub>max.</sub>	Maximum peak flow	±2%	l/h	3000	5000	7000	20000	30000
Q <sub>n</sub>	Nominal flow	±2%	l/h	1500	2500	3500	10000	15000
Q <sub>1</sub>	Transitional flow	±2%	l/h	120	200	280	800	1200
Q <sub>min</sub>	Min. flow	±5%	l/h	30	50	70	200	300
	Test pressure	P <sub>N</sub>	bar	16	16	16	16	16
	Length face to face	L <sub>1</sub>		165	190	260	300	330
	Length with nipples	L <sub>2</sub>		250	290	380	430	470



**CAPSTAN METERS (INDIA) LTD.**

ISO 9001:2000 COMPANY