

Fiber Laser Marking Machine

Technology

Based on Ytterbium Fiber Laser Which is highly reliable laser source.

Marking

Able to mark all metal and some non-metal materials. marking minimum lines width of 0.03 mm, minimum height of 0.3 mm for english characters and depth of up to 1mm*

Dependability

Sturdy frame structure for lowest vibration and trouble free operation makes it ideal for continues operation like Hallmarking Centers & Jewellery Factories*.

Convenience

Latest Air Cool Technology makes this machine work on a low power consumption of below 800W* thus makes it most energy savings.

Compact

Ergonomically designed & can easily connect with Laptop (Optional), make this machine very compact & can be placed on workstation, taking up a small working space convenient to use for small factories & showrooms.

Ease

Support for auto-coding, serial number, batch number, date bar code and two dimensional codes.

Compatibility

WINDOWS based marking software, able to read CORELDRAW, AUTOCAD, PHOTOSHOP and other commonly used graphic files, such as AI, PLT, DXF, BMP, JPEG.

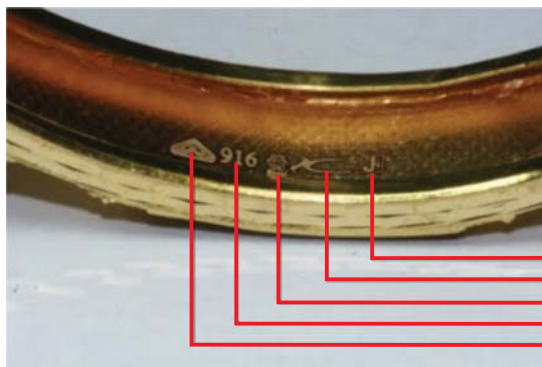
Flexibility

Optional Motorised Rotary Marking Device for accurate & continuous 360° marking inside or outside bangles & Rings.

Low Maintenance

Complete enclosed laser module design with the optical fiber transmission pump light source & air cooling systems, which offers better protection for the laser devices hence reducing the failure rate.

Optional Colour Laser Marking



The Year of Hallmarking
Jeweller's Identification Mark
Assay Center
Purity of Gold
The BIS Logo



Model	CFM 20E	CFM 20P
Laser Source	Ytterbium Pulsed Fiber Laser	
Laser Power	20W	
Wavelength	1064 nm	
Beam Quality M ²	M ² >1.6	
Pulse Repetition Rate	20 Hz - 100KHz	
Marking Area (mm)	70 x 70 / 100 x 100 (Optional)	
Marking Speed	< 15000 mm/sec	
Laser Frequency	20 - 100 kHz	
Cooling System	Air Cooling	
Minimum Width	0.03 mm	
Minimum Character	0.3 mm	
Repeatability	0.003 mm	
Power Consumption	800 W	
Power Supply	220 V AC, 60 Hz / 1P / 4A or 110V / 50Hz / 1P / 8A	
Dimension (LxWxH)	600 x 460 x 530	
Net Weight	45 Kgs	