

Bird Spike Guard



SHIV Green Energy

: SPECIALIST FOR :

Manufacturing, Supply & Erection of Materials for 11kv to 400kv Lines & Sub-Station, i.e. Silicon Rubber Insulator Disc, Pin, Post, Isolator, D.O. Fuse, VCB, CTPT & Fabrication of V-cross arm, Cut Pole Chanel, F-Clamp, Stay Set, Hardware, Tower Material, Spike Guard (Bird Guard) etc. For Electrical Network

Office : Plot No. 107, Divyam Park, Opp. H.O. Bhatt Bunglow, Near Sanjeevani Medical Street, Jamnagar - 361 006 (Guj-INDIA)
Factory : "Shiv Green Energy Pvt. Ltd." Plot No.1, S. No.17/3, Vishwanath Industrial Park-08, B/h. Ashapura Restaurant & Party Plot, Bypass Road, Jamnagar. Cell No. : +91 81287 30317, +91 99099 24932, +91 99099 24934, +91 99099 24520
Email : shivgreenenergy@gmail.com

SHIV Green Energy PVT. LTD.[®]

(An ISO 9001 - 2008 Certified Company)

(Jamnagar)

BIRD SPIKE GUARD FOR HIGH VOLTAGE LINES & BUILDING ROOF TOP PROTECTION :

Why Is There A Need To Control Birds ???



- Bird seating on LV and HV electrical line and results in to bird fault of line.
- Bird dropping on electrical line insulators, leakage current increases and line tripping.
- They deface building rooftops, floors, walls, vehicles and equipment.
- They nibble at, or even tear out insulation. The corrosive effect of droppings causes irreversible damage.
- Bird Droppings are unhygienic, and render walking surfaces underfoot slippery and dangerous. Droppings cost money, cleaning crews, related equipment, and time spent can generate large financial losses.
- Birds and their droppings create unsanitary conditions and may cause over sixty transmissible (some even potentially fatal) diseases such as Histoplasmosis, Cryptococcosis, Psittacosis, etc.

APPLICATION GUIDE : INSTALLATION OR FIXING

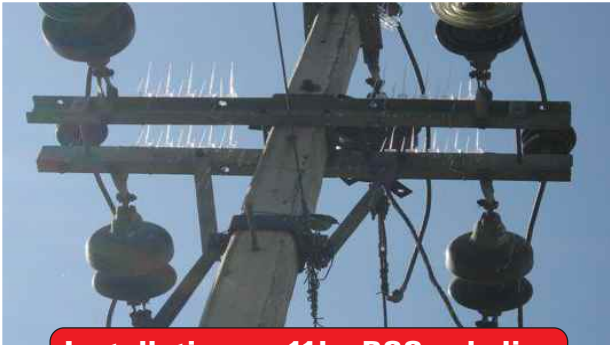
- Dr. FIXIT Silicone Sealant manufactured by Pidilite Industries Ltd or similar product for buildings.
- Insulated wire or any non corrosive binding material can be use to fix it on channel or pipe etc.



Installation at Tower line TOP



Installation on Double Pole line



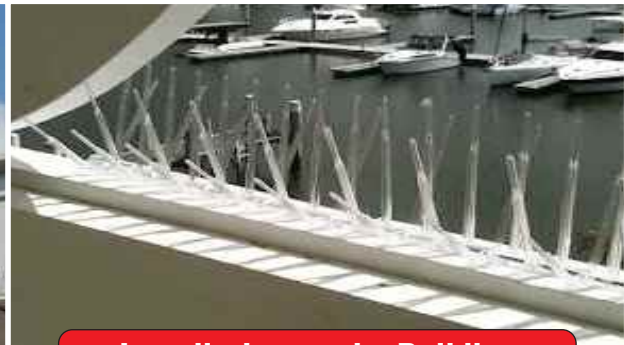
Installation on 11kv PCC pole line



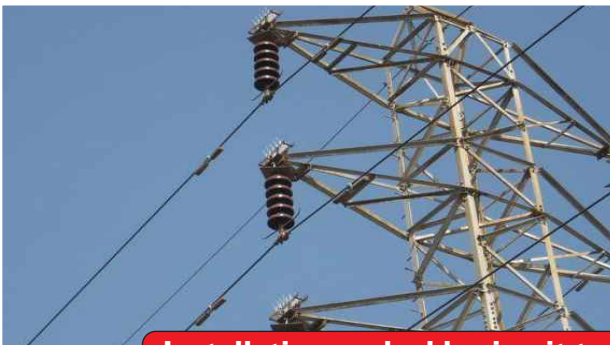
Installation on 33kv single ckt line



Installation on the Structure



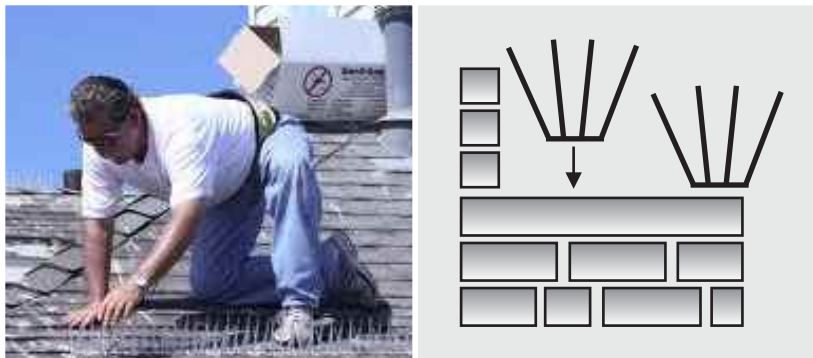
Installation on the Building



Installation on double circuit tower line and gantry of Substation



THE ONLY EFFECTIVE SOLUTION TO BIRD MENACE! I.E. INSTALLATION OF BIRD SPIKE GUARD



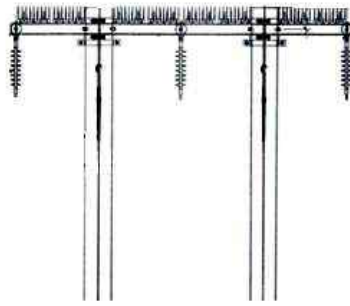
Bird spikes guard prevent birds from perching on your property without injury. Our patented Birds spikes guard are simply Install on Pole, Tower, Channel, window, pipe, ledge, solar cell, antenna or buildings where bird roost; the dense pattern of protruding pins make it impossible for bird to land, encouraging them to go elsewhere without hurting them. Bird spikes are virtually invisible once installed and provide the ultimate bird deterrent.

As high dielectric material is used to mould the spike guard, which prevent to electrocution of bird and that is our ultimate motto.

**Spike Guard installed on the
top of roof, at Balcony, Antenna, Solar Cell to deter bird.**

SPIKE GUARD INSTALLED OVER THE TOP OF CHANNELS TO PREVENT BIRD FAULT

Spike guard are maintenance free and easy to install on any surface. It is very simple but intricately design to deter all birds. This is the only long term and cost effective solution for bird menace.



OTHER PRODUCTS :



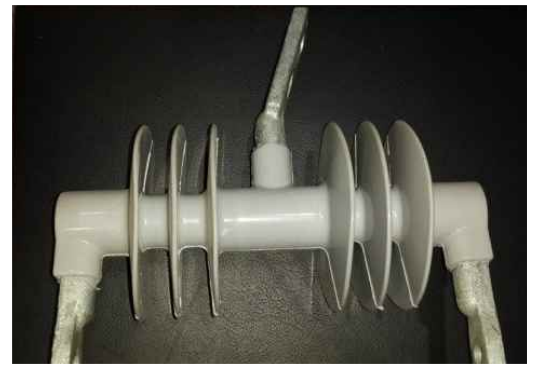
11KV PIN INSULATOR



11KV DISC INSULATOR



11KV POST INSULATOR



11KV DO FUSE



11KV DO FUSE



11 KV GO SWITCH WITH 9 INSULATOR TYPE



11KV GO SWITCH 6 INSULATOR TYPE



33KV PIN INSULATOR



33KV DISC INSULATOR



33KV POST INSULATOR



33KV ISOLATORS



33KV DO FUSE



66KV DISC INSULATOR



66KV POST INSULATOR



INSULATORS



GUY SET



CONNECTORS



CABLE CONNECTORS



STAY WIRE



CONDUCTORS



SUSPENSION HARDWARE



EARTHING PIPE



TENSION HARDWARE



ARCHING HORN



EARTHING STRIP