

Test Code	Test Description	Methodology	Machine Name	Technology	Sample Type	Vol	Fasting	TAT
TSH	THYROID STIMULATING HORMONE (TSH)	ULTRA SENSITIVE SANDWICH CHEMI LUMINESCENT IMMUNO ASSAY	CENTAUR	C.L.I.A	SERUM	1ml	N	3
H6	HEMOGRAM - 6 PART (DIFF)	N/A	SYSMEX XN 1000	HEMATOLOGY	EDTA	2ml	N	3
HBA	HbA1c	Fully Automated H.P.L.C. using Biorad Variant II Turbo, NGSP Certified.	BIORAD VARIANT II TURBO	H.P.L.C	EDTA	2ml	N	3
FT4	FREE THYROXINE (FT4)	Competitive Chemi Luminescent Immuno Assay	CENTAUR	C.L.I.A	SERUM	1ml	N	3
VITDC	25-OH VITAMIN D (TOTAL)	Fully Automated Chemi Luminescent Immuno Assay	CENTAUR	C.L.I.A	SERUM	1ml	N	3
FT3	FREE TRIIODOTHYRONINE (FT3)	Competitive Chemi Luminescent Immuno Assay	CENTAUR	C.L.I.A	SERUM	1ml	N	3
UALB	URINARY MICROALBUMIN	Fully Automated Immuno Turbidometry	OLYMPUS	PHOTOMETRY	URINE	2ml	N	12
FBS	FASTING BLOOD SUGAR	GOD-PAP METHOD	OLYMPUS	PHOTOMETRY	FLUORIDE	2ml	Y	3
PRL	PROLACTIN (PRL)	Fully Automated Bidirectionally Interfaced Chemi Luminescent Immuno Assay	CENTAUR	C.L.I.A	SERUM	1ml	N	3
UROG	URINOGRAM	N/A	DIRUI H-100	MICROSCOPY	URINE	2ml	N	12
BEAP	BLOOD ELEMENT ANALYSIS PROFILE	ICP - MASS SPECTROMETRY	ICAPQC ICP-MS	ICP-MS	EDTA	2ml	N	24
VITB	VITAMIN B-12	Fully Automated Bidirectionally Interfaced Chemi Luminescent Immuno Assay	CENTAUR	C.L.I.A	SERUM	1ml	N	3
AHEL	ADULT HEMOGLOBIN ELECTROPHORESIS	FULLY AUTOMATED CAPILLARY ZONE ELECTROPHORESIS (SEBIA CAPILLARYS 2 FLEX PIERCING)	CAPILLARY ELECTROPHORESIS	CAPILLARY ELECTROPHORESIS	EDTA	2ml	N	12
T4	TOTAL THYROXINE (T4)	Competitive Chemi Luminescent Immuno Assay	CENTAUR	C.L.I.A	SERUM	1ml	N	3
T3	TOTAL TRIIODOTHYRONINE (T3)	Competitive Chemi Luminescent Immuno Assay	CENTAUR	C.L.I.A	SERUM	1ml	N	3
SCRE	CREATININE - SERUM	Creatinine Enzymatic Method	OLYMPUS	PHOTOMETRY	SERUM	1ml	Y	3
TIGE	TOTAL IgE	FULLY AUTOMATED BIDIRECTIONALLY INTERFACED CHEMI LUMINESCENT IMMUNO ASSAY	CENTAUR	C.L.I.A	SERUM	1ml	N	3
PSA	PROSTATE SPECIFIC ANTIGEN (PSA)	FULLY AUTOMATED CHEMI LUMINESCENT IMMUNO ASSAY	CENTAUR	C.L.I.A	SERUM	1ml	N	4

Test Code	Test Description	Methodology	Machine Name	Technology	Sample Type	Vol	Fasting	TAT
HVA	HEMOGLOBIN VARIANT ANALYSIS - HPLC	FULLY AUTOMATED H.P.L.C USING BIORAD VARIANT II.	BIORAD VARIANT II	H.P.L.C	EDTA	3ml	N	8
FSH	FOLLICLE STIMULATING HORMONE (FSH)	Fully Automated Bidirectionally Interfaced Chemi Luminescent Immuno Assay	CENTAUR	C.L.I.A	SERUM	1ml	N	3
PPBS	POSTPRANDIAL BLOOD SUGAR	GOD-PAP METHOD	OLYMPUS	PHOTOMETRY	FLUORIDE	2ml	N	3
LASE	LIPASE	ENZYMATIC COLORIMETRIC ASSAY	OLYMPUS	PHOTOMETRY	SERUM	1ml	Y	3
TEST	TESTOSTERONE	Fully Automated Bidirectionally Interfaced Chemi Luminescent Immuno Assay	CENTAUR	C.L.I.A	SERUM	1ml	N	3
AMYL	AMYLASE	ENZYMATIC PHOTOMETRIC TEST.	ADVIA 1800	PHOTOMETRY	SERUM	1ml	Y	3
FERR	FERRITIN	Fully Automated Bidirectionally Interfaced Chemi Luminescent Immuno Assay	CENTAUR	C.L.I.A	SERUM	1ml	N	3
URIC	URIC ACID	Uricase / Peroxidase Method	OLYMPUS	PHOTOMETRY	SERUM	1ml	Y	3
LH	LUTEINISING HORMONE (LH)	Fully Automated Bidirectionally Interfaced Chemi Luminescent Immuno Assay	CENTAUR	C.L.I.A	SERUM	1ml	N	3
SOD	SODIUM	ION SELECTIVE ELECTRODE	OLYMPUS	I.S.E	SERUM	2ml	N	3
ACCP	ANTI CCP (ACCP)	SOLID PHASE CAPTURE ENZYME IMMUNOASSAY	ELISA	E.L.I.S.A	SERUM	1ml	N	12
HOMO	HOMOCYSTEINE	COMPETITIVE CHEMI LUMINESCENT IMMUNO ASSAY	CENTAUR	C.L.I.A	SERUM	1ml	Y	3
C125	CA-125	FULLY AUTOMATED CHEMI LUMINESCENT IMMUNO ASSAY	ARCHITECT	C.L.I.A	SERUM	1ml	N	3
CALC	CALCIUM	Arsenazo III Method, End Point.	OLYMPUS	PHOTOMETRY	SERUM	1ml	N	3
AMH	ANTI MULLERIAN HORMONE (AMH)	ONE-STEP IMMUNOENZYMATIC ("SANDWICH") ASSAY	BECKMAN ACCESS 2	C.L.I.A	SERUM	1ml	N	12
ESR	ERYTHROCYTE SEDIMENTATION RATE (ESR)	WESTERGREN	MANUAL	WESTERGREN	EDTA		N	12
BTHAL	BETA-THALASSEMIA SCREENING	FULLY AUTOMATED H.P.L.C USING BIORAD VARIANT II.	BIORAD VARIANT II	H.P.L.C	EDTA	2ml	N	24
BUN	BLOOD UREA NITROGEN (BUN)	Kinetic UV Assay.	OLYMPUS	PHOTOMETRY	SERUM	1ml	Y	3
AMA	ANTI MICROSOMAL ANTIBODY (AMA)	Fully Automated Chemi Luminescent Immuno Assay	ROCHE	C.L.I.A	SERUM	1ml	N	4

Test Code	Test Description	Methodology	Machine Name	Technology	Sample Type	Vol	Fasting	TAT
ANA	ANTI NUCLEAR ANTIBODIES (ANA)	Solid Phase Enzyme Immunoassay	ELISA	E.L.I.S.A	SERUM	1ml	N	12
BHCG	BETA HCG	FULLY AUTOMATED CHEMI LUMINESCENT IMMUNO ASSAY	ARCHITECT	C.L.I.A	SERUM	1ml	N	4
CHL	CHLORIDE	ION SELECTIVE ELECTRODE	OLYMPUS	I.S.E	SERUM	2ml	N	3
CD4	CD3/CD4/CD8		FACSCALIBUR	FLOWCYTOMETRY	EDTA	2ml	N	24
RFAC	RHEUMATOID FACTOR (RF)	FULLY AUTOMATED RATE NEPHELOMETRY – BECKMAN IMAGE	BECKMAN IMAGE	NEPHELOMETRY	SERUM	1ml	N	12
CHOL	TOTAL CHOLESTEROL	CHOD POD Method	OLYMPUS	PHOTOMETRY	SERUM	1ml	Y	3
POT	POTASSIUM	ION SELECTIVE ELECTRODE	OLYMPUS	I.S.E	SERUM	2ml	N	3
INSFA	INSULIN - FASTING	FULLY AUTOMATED CHEMI LUMINESCENT IMMUNO ASSAY	BECKMAN ACCESS 2	C.L.I.A	SERUM	1ML	Y	12
SAG	HEPATITIS B SURFACE ANTIGEN (HBsAg)	SOLID PHASE ENZYME IMMUNOASSAY	OFFLINE	E.L.I.S.A	SERUM	1ml	N	12
SEEL	SERUM ELECTROLYTES	ION SELECTIVE ELECTRODE	OLYMPUS	I.S.E	SERUM	1ml	N	3
CRP	C-REACTIVE PROTEIN (CRP)	FULLY AUTOMATED LATEX AGGLUTINATION – BECKMAN COULTER	BECKMAN AU5821	IMMUNOTURBIDIMETRY	SERUM	1ml	N	12
HB27	HLA-B27	Immunophenotyping	FACSCALIBUR	FLOWCYTOMETRY	EDTA	2ml	N	24
RBS	RANDOM BLOOD SUGAR	GOD-PAP METHOD	OLYMPUS	PHOTOMETRY	FLUORIDE	2ml	N	3
E2	ESTRADIOL/OESTROGEN (E2)	FULLY AUTOMATED BIDIRECTIONALLY INTERFACED CHEMI LUMINESCENT IMMUNO ASSAY	ARCHITECT	C.L.I.A	SERUM	1ml	N	3
SGPT	ALANINE TRANSAMINASE (SGPT)	IFCC* Without Pyridoxal Phosphate Activation	OLYMPUS	PHOTOMETRY	SERUM	1ml	Y	3
TX_M	TOXO GONDII - IgM	Solid Phase Capture Enzyme Immunoassay	ELISA	E.L.I.S.A	SERUM	1ml	N	12
E22	ELEMENTS 22 (TOXIC AND NUTRIENTS)	ICP - MASS SPECTROMETRY	ICAPQC ICP-MS	ICP-MS	EDTA	3ml	N	24
AHCV	ANTI HEPATITIS C VIRUS (Anti HCV) - TOTAL	SOLID PHASE ENZYME IMMUNOASSAY	OFFLINE	E.L.I.S.A	SERUM	1ml	N	12
HIVE	HIV - I & II ELISA KIT -1	SOLID PHASE CAPTURE ENZYME IMMUNOASSAY	OFFLINE	E.L.I.S.A	SERUM	1ml	N	12
FOLI	FOLATE	Fully Automated Chemi Luminescent Immuno Assay	CENTAUR	C.L.I.A	SERUM	1ml	N	3
IRON	IRON	Ferrozine method without	OLYMPUS	PHOTOMETRY	SERUM	1ml	Y	3

Test Code	Test Description	Methodology	Machine Name	Technology	Sample Type	Vol	Fasting	TAT
		deproteinization						
Q -TB	QUANTIFERON - TB	IGRA (INTERFERON GAMMA RELEASE ASSAY)	MANUAL	E.L.I.S.A	LITHIUM HEPARIN	3ML	N	24
RB_M	RUBELLA - IgM	Solid Phase Capture Enzyme Immunoassay	ELISA	E.L.I.S.A	SERUM	1ml	N	12
PHOS	PHOSPHOROUS	UNREDUCED PHOSPHOMOLYBDATE METHOD	ADVIA 2400	PHOTOMETRY	SERUM	1ml	N	3
PROT	PROTEIN - TOTAL	Biuret Method	OLYMPUS	PHOTOMETRY	SERUM	1ml	Y	3
CEA	CARCINO EMBRYONIC ANTIGEN (CEA)	FULLY AUTOMATED CHEMI LUMINESCENT IMMUNO ASSAY	ARCHITECT	C.L.I.A	SERUM	1ml	N	4
CM_M	CYTOMEGALO VIRUS (CMV) - IgM	Solid Phase Capture Enzyme Immunoassay	ELISA	E.L.I.S.A	SERUM	1ml	N	12
HC_M	HERPES SIMPLEX VIRUS (HSV)-IgM	Solid Phase Capture Enzyme Immunoassay	ELISA	E.L.I.S.A	SERUM	1ml	N	12
ADA	ADENOSINE DEAMINASE	ENZYMATIC COLORIMETRIC TEST	OLYMPUS	PHOTOMETRY	SERUM	1ml	N	24
SGOT	ASPARTATE AMINOTRANSFERASE (SGOT)	IFCC* Without Pyridoxal Phosphate Activation	OLYMPUS	PHOTOMETRY	SERUM	1ml	Y	3
PREL	PROTEIN ELECTROPHORESIS	Fully Automated Capillary Zone Electrophoresis (Sebia Capillarys 2 Flex Piercing)	CAPILLARY ELECTROPHORESIS	CAPILLARY ELECTROPHORESIS	SERUM	1ml	N	12
PTH	INTACT PARATHYROID HORMONE (PTH)	FULLY AUTOMATED CHEMI LUMINESCENT IMMUNO ASSAY	BECKMAN ACCESS 2	C.L.I.A	SERUM	1ml	N	4
PROG	PROGESTERONE	FULLY AUTOMATED BIDIRECTIONALLY INTERFACED CHEMI LUMINESCENT IMMUNO ASSAY	ARCHITECT	C.L.I.A	SERUM	1ml	N	4
CORT	CORTISOL	Fully Automated Bidirectionally Interfaced Chemi Luminescent Immuno Assay	ROCHE	C.L.I.A	SERUM	1ml	N	4
RB_G	RUBELLA - IgG	Solid Phase Enzyme Immunoassay	ELISA	E.L.I.S.A	SERUM	1ml	N	12
TRIG	TRIGLYCERIDES	Enzymatic Colorimetric Method (GPO) [Highly influenced by level of fasting]	OLYMPUS	PHOTOMETRY	SERUM	1ml	Y	3
DHEA	DHEA - SULPHATE (DHEAS)	FULLY AUTOMATED CHEMI LUMINESCENT IMMUNO ASSAY	BECKMAN ACCESS 2	C.L.I.A	SERUM	1ml	N	4

Test Code	Test Description	Methodology	Machine Name	Technology	Sample Type	Vol	Fasting	TAT
ATG	ANTI THYROGLOBULIN ANTIBODY (ATG)	FULLY AUTOMATED CHEMI LUMINESCENT IMMUNO ASSAY	ROCHE	C.L.I.A	SERUM	1ml	N	4
TTGA	TISSUE TRANSGLUTAMINASE - IgA (TTG)	SOLID PHASE ENZYME IMMUNOASSAY	ELISA	E.L.I.S.A	SERUM	1ml	N	12
AFP	ALPHA FETO PROTEIN (AFP)	Fully Automated Chemi Luminescent Immuno Assay	IMMULITE	C.L.I.A	SERUM	1ml	N	4
TX_G	TOXO GONDII - IgG	Solid Phase Enzyme Immunoassay	ELISA	E.L.I.S.A	SERUM	1ml	N	12
FTES	FREE TESTOSTERONE	SOLID PHASE ENZYME IMMUNOASSAY	OFFLINE	E.L.I.S.A	SERUM	1ml	N	12
APLM	ANTI PHOSPHOLIPID ANTIBODY (APL) - IgM	Solid Phase Enzyme Immunoassay	ELISA	E.L.I.S.A	SERUM	1ml	N	12
HBVQN	HEPATITIS B VIRUS (HBV) QUANTITATIVE PCR	RT-PCR	QIAGEN	REAL TIME PCR	EDTA	2ML	N	48
MA	MALARIAL ANTIGEN	RAPID IMMUNOASSAY	OFFLINE	IMMUNOASSAY	EDTA	3ml	N	12
MG	MAGNESIUM	MODIFIED XYLIDYL BLUE REACTION METHOD	ADVIA 1800	PHOTOMETRY	SERUM	3ml	N	3
APLG	ANTI PHOSPHOLIPID ANTIBODY (APL) - IgG	Solid Phase Enzyme Immunoassay	ELISA	E.L.I.S.A	SERUM	1ml	N	12
HSCRIP	HIGH SENSITIVITY C-REACTIVE PROTEIN (HS-CRP)	FULLY AUTOMATED LATEX AGGLUTINATION – BECKMAN COULTER	BECKMAN AU5821	IMMUNOTURBIDIMETRY	SERUM	2ML	N	12
BILT	BILIRUBIN - TOTAL	Vanadate Oxidation	OLYMPUS	PHOTOMETRY	SERUM	1ml	Y	3
ASO	ANTI STREPTOLYSIN - O (ASO)	FULLY AUTOMATED RATE NEPHELOMETRY – BECKMAN IMAGE	BECKMAN IMAGE	NEPHELOMETRY	SERUM	1ml	N	12
EAG	HEPATITIS B ENVELOPE ANTIGEN (HBeAg)	Fully Automated Bidirectionally Interfaced Chemi Luminescent Immuno Assay	ARCHITECT	C.L.I.A	SERUM	1ml	N	4
C199	CA 19.9	FULLY AUTOMATED CHEMI LUMINESCENT IMMUNO ASSAY	ARCHITECT	C.L.I.A	SERUM	1ml	N	4
FRUCT	FRUCTOSAMINE	NITROBLUE TETRAZOLIUM ASSAY (NBT)	ADVIA 2400	PHOTOMETRY	SERUM	3ml	N	
VDRL	VDRL (RPR) FOR SYPHILIS	RAPID PLASMA REAGIN	OFFLINE	AGGLUTINATION	SERUM	1ML	N	
TIBC	TOTAL IRON BINDING CAPACITY (TIBC)	Spectrophotometric Assay	OLYMPUS	PHOTOMETRY	SERUM	1ml	N	3
HAVM	ANTI HEPATITIS A VIRUS (ANTI HAV) - IgM	FULLY AUTOMATED BIDIRECTIONALLY INTERFACED CHEMI LUMINESCENT IMMUNO ASSAY	ARCHITECT	C.L.I.A	SERUM	1ml	N	4

Test Code	Test Description	Methodology	Machine Name	Technology	Sample Type	Vol	Fasting	TAT
BKETO	BLOOD KETONE (D3HB)	ENZYMATIC (KINETIC)	ADVIA 2400	PHOTOMETRY	SERUM	3ml	N	
DNA	ANTI - DSDNA	SOLID PHASE ENZYME IMMUNOASSAY	ELISA	E.L.I.S.A	SERUM	1ml	N	12
INSPP	INSULIN - PP	FULLY AUTOMATED CHEMI LUMINESCENT IMMUNO ASSAY	BECKMAN ACCESS 2	C.L.I.A	SERUM	1ML	N	12
AC_M	CARDIOLIPIN ANTIBODY (ACL) - IgM	Solid Phase Enzyme Immunoassay	ELISA	E.L.I.S.A	SERUM	1ml	N	12
LDH	LACTATE DEHYDROGENASE	LACTATE / NAD METHOD	ADVIA 1800	PHOTOMETRY	SERUM	3ml	N	3
ALKP	ALKALINE PHOSPHATASE	Modified IFCC method	OLYMPUS	PHOTOMETRY	SERUM	1ml	Y	3
AC_G	CARDIOLIPIN ANTIBODY (ACL) -IgG	Solid Phase Enzyme Immunoassay	ELISA	E.L.I.S.A	SERUM	1ml	N	12
PLA2	LIPOPROTEIN ASSOCIATED PHOSPHOLIPASE A2 (LP-PLA2)	ENZYMATIC ASSAY	OLYMPUS	PHOTOMETRY	SERUM	1ml	N	24
HCVQL	HEPATITIS C VIRUS (HCV) QUALITATIVE PCR	RT-PCR	QIAGEN	REAL TIME PCR	EDTA	2ML	N	48
HEVM	ANTI HEPATITIS E VIRUS (Anti HEV) - IgM	Solid Phase Enzyme Immunoassay	ELISA	E.L.I.S.A	SERUM	1ml	N	12
HCHO	HDL CHOLESTEROL - DIRECT	Enzyme selective protection method	OLYMPUS	PHOTOMETRY	SERUM	1ml	Y	3
TPHA	TREPONEMA PALLIDUM HAEMAGGLUTINATION		ELISA	AGGLUTINATION	SERUM	1ml	N	12
BILD	BILIRUBIN -DIRECT	Vanadate Oxidation	OLYMPUS	PHOTOMETRY	SERUM	1ml	Y	3
HS1M	HERPES SIMPLEX VIRUS I (HSV)-IGM	Solid Phase Enzyme Immunoassay	ELISA	E.L.I.S.A	SERUM	1ml	N	12
HS1G	HERPES SIMPLEX VIRUS I (HSV)-IGG	Solid Phase Enzyme Immunoassay	ELISA	E.L.I.S.A	SERUM	1ml	N	12
CPEP	C-PEPTIDE	Fully Automated Chemi Luminescent Immuno Assay	CENTAUR	C.L.I.A	SERUM	3ml	Y	3
TG	THYROGLOBULIN (TG)	Fully Automated Chemi Luminescent Immuno Assay	IMMULITE	C.L.I.A	SERUM	1ml	N	4
TYP	TYPHOID TEST	LATERAL FLOW IMMUNOASSAY	OFFLINE	IMMUNOASSAY	SERUM	3ml	N	12
C3	COMPLEMENT 3 (C3)	FULLY AUTOMATED RATE NEPHELOMETRY – BECKMAN IMAGE	BECKMAN IMAGE	NEPHELOMETRY	SERUM	1ml	N	12
HC_G	HERPES SIMPLEX VIRUS (HSV)-IgG	Solid Phase Enzyme Immunoassay	ELISA	E.L.I.S.A	SERUM	1ml	N	12
LITHI	LITHIUM	LI METHOD	DIMENSION	PHOTOMETRY	SERUM	1ml	N	12
CM_G	CYTOMEGALO VIRUS (CMV) - IgG	Solid Phase Enzyme Immunoassay	ELISA	E.L.I.S.A	SERUM	1ml	N	12
FPSA	FREE PSA	FULLY AUTOMATED CHEMI	ARCHITECT	C.L.I.A	SERUM	1ml	N	4

Test Code	Test Description	Methodology	Machine Name	Technology	Sample Type	Vol	Fasting	TAT
		LUMINESCENT IMMUNO ASSAY						
HS2M	HERPES SIMPLEX VIRUS II (HSV)-IgM	Solid Phase Enzyme Immunoassay	ELISA	E.L.I.S.A	SERUM	1ml	N	12
HS2G	HERPES SIMPLEX VIRUS II (HSV)-IgG	Solid Phase Capture Enzyme Immunoassay	ELISA	E.L.I.S.A	SERUM	1ml	N	12
HIVQL	HIV-1, RNA QUALITATIVE PCR	RT-PCR	QIAGEN	REAL TIME PCR	EDTA	2ML	N	48
AAP	AMINO ACID PROFILE (35)	LIQUID CHROMATOGRAPHY TANDEM MASS SPECTROMETRY	LC-MS	LC-MS/MS	SERUM	3ml	N	12
HIVQN	HIV-1, RNA QUANTITATIVE PCR	RT-PCR	QIAGEN	REAL TIME PCR	EDTA	2ML	N	48
HCVQN	HEPATITIS C VIRUS (HCV) QUANTITATIVE PCR	RT-PCR	QIAGEN	REAL TIME PCR	EDTA	2ML	N	48
17OH	17 OH PROGESTERONE	COMPETITIVE ENZYME IMMUNOASSAY	OFFLINE	E.L.I.S.A	SERUM	1ml	N	12
SEZN	SERUM ZINC	NITRO - PAPS	ADVIA 2400	PHOTOMETRY	SERUM	3ml	N	12
HGH	HUMAN GROWTH HORMONE (HGH)	Fully Automated Chemi Luminescent Immuno Assay	IMMULITE	C.L.I.A	SERUM	1ml	N	4
SALB	ALBUMIN - SERUM	Albumin Bcg ¹ method (Colorimetric Assay Endpoint)	OLYMPUS	PHOTOMETRY	SERUM	1ml	Y	3
IGM	IMMUNOGLOBULIN M (IGM)	FULLY AUTOMATED RATE NEPHELOMETRY – BECKMAN IMAGE	BECKMAN IMAGE	NEPHELOMETRY	SERUM	1ml	N	12
G6PD	GLUCOSE-6-PHOSPHATE DEHYDROGENASE	ENZYMATIC COLORIMETRIC TEST	OLYMPUS	PHOTOMETRY	EDTA	2ml	N	24
AHBE	ANTI HEPATITIS B ENVELOPE ANTIGEN (AHBe) -TOTAL	Fully Automated Bidirectionally Interfaced Chemi Luminescent Competitive Immuno Assay	ARCHITECT	C.L.I.A	SERUM	1ml	N	4
IGG	IMMUNOGLOBULIN G (IGG)	FULLY AUTOMATED RATE NEPHELOMETRY – BECKMAN IMAGE	BECKMAN IMAGE	NEPHELOMETRY	SERUM	1ml	N	12
C153	CA 15.3	FULLY AUTOMATED CHEMI LUMINESCENT IMMUNO ASSAY	ARCHITECT	C.L.I.A	SERUM	1ml	N	4
NHEL	NEONATAL HEMOGLOBIN ELECTROPHORESIS	FULLY AUTOMATED CAPILLARY ZONE ELECTROPHORESIS (SEBIA CAPILLARYS 2 FLEX PIERCING)	CAPILLARY ELECTROPHORESIS	CAPILLARY ELECTROPHORESIS	EDTA	2ml	N	12
GGT	GAMMA GLUTAMYL TRANSFERASE (GGT)	Modified IFCC method	OLYMPUS	PHOTOMETRY	SERUM	1ml	Y	3
HBST	ANTI HEPATITIS B SURFACE ANTIGEN (AHBS) - TOTAL	FULLY AUTOMATED CHEMI LUMINESCENT IMMUNO ASSAY	ARCHITECT	C.L.I.A	SERUM	1ml	N	4

Test Code	Test Description	Methodology	Machine Name	Technology	Sample Type	Vol	Fasting	TAT
NS1	DENGUE NS1 ANTIGEN	RAPID IMMUNOCHROMATOGRAPHIC ASSAY	MANUAL	IMMUNOASSAY	SERUM	2ML	N	12
C4	COMPLEMENT 4 (C4)	FULLY AUTOMATED RATE NEPHELOMETRY – BECKMAN IMMAGE	BECKMAN IMMAGE	NEPHELOMETRY	SERUM	1ml	N	12
CANC	PR3 - ANCA (C-ANCA)	Solid Phase Enzyme Immunoassay	ELISA	E.L.I.S.A	SERUM	1ml	N	12
WEST	HIV - WESTERN BLOT	Paper Chromatography	ELISA	P.C	SERUM	1ml	N	24
VALP	VALPROIC ACID	Fully Automated Chemi Luminescent Immuno Assay	CENTAUR	C.L.I.A	SERUM	1ml	N	3
HBCM	ANTI HEPATITIS B CORE ANTIGEN (AHBC) - IgM	SOLID PHASE ENZYME IMMUNOASSAY	ELISA	E.L.I.S.A	SERUM	1ml	N	12
DG_M	DENGUE-IgM	Solid Phase Enzyme Immunoassay	ELISA	E.L.I.S.A	SERUM	1ml	N	12
PANC	MPO - ANCA (P - ANCA)	Solid Phase Enzyme Immunoassay	ELISA	E.L.I.S.A	SERUM	1ml	N	12
SECU	SERUM COPPER	3,5-DIBR-PAESA	ADVIA 2400	PHOTOMETRY	SERUM	3ml	N	12
HBCT	ANTI HEPATITIS B CORE ANTIGEN (AHBC) - TOTAL	FULLY AUTOMATED CHEMI LUMINESCENT IMMUNO ASSAY	ARCHITECT	C.L.I.A	SERUM	1ml	N	4
SHBG	SEX HORMONE BINDING GLOBULIN (SHBG)	Fully Automated Chemi Luminescent Immuno Assay	ROCHE	C.L.I.A	SERUM	1ml	N	4
APOA	APOLIPOPROTEIN - A1 (APO-A1)	FULLY AUTOMATED RATE IMMUNOTURBIDIMETRY – BECKMAN COULTER	BECKMAN AU5821	IMMUNOTURBIDIMETRY	SERUM	1ml	Y	12
AC_A	CARDIOLIPIN ANTIBODY (ACL) - IgA	Solid Phase Enzyme Immunoassay	ELISA	E.L.I.S.A	SERUM	1ml	N	12
APOB	APOLIPOPROTEIN - B (APO-B)	FULLY AUTOMATED RATE IMMUNOTURBIDIMETRY – BECKMAN COULTER	BECKMAN AU5821	IMMUNOTURBIDIMETRY	SERUM	1ml	Y	12
PHEN	PHENYTOIN / DILANTIN / EPTOIN	Fully Automated Chemi Luminescent Immuno Assay	ROCHE	C.L.I.A	SERUM	1ml	N	4
TB001	TB PCR	RT PCR	MANUAL	RT PCR	SPUTUM	3ml	N	48
HAVT	ANTI HEPATITIS A VIRUS (HAV) - TOTAL	Competitive Enzyme Immunoassay	ELISA	E.L.I.S.A	SERUM	1ml	N	12
CHI_M	CHIKUNGUNYA-IGM	INDIRECT ELISA	ELISA	E.L.I.S.A	SERUM	3ml	N	12
NEOT	NEOT	Fully Automated Bidirectionally Interfaced Chemi Luminescent Immuno Assay	CENTAUR	C.L.I.A	EDTA	2ml	N	3

Test Code	Test Description	Methodology	Machine Name	Technology	Sample Type	Vol	Fasting	TAT
IGA	IMMUNOGLOBULIN A (IGA)	FULLY AUTOMATED RATE NEPHELOMETRY – BECKMAN IMMAGE	BECKMAN IMMAGE	NEPHELOMETRY	SERUM	1ml	N	12
CERU	CERULOPLASMIN	FULLY AUTOMATED RATE NEPHELOMETRY – BECKMAN IMMAGE	BECKMAN IMMAGE	NEPHELOMETRY	SERUM	3ml	N	12
SICKL	SICKLING TEST		OFFLINE	MICROSCOPY	EDTA	2ml	N	24
LPA	LIPOPROTEIN (A) [LP(A)]	LATEX ENHANCED IMMUNOTURBIDIMETRY	BECKMAN AU5821	IMMUNOTURBIDIMETRY	SERUM	1ml	Y	12
DG_G	DENGUE-IGG	Solid Phase Enzyme Immunoassay	ELISA	E.L.I.S.A	SERUM	1ml	N	12
ANDR	ANDROSTENEDIONE (A4)	FULLY AUTOMATED CHEMI LUMINESCENT IMMUNO ASSAY	IMMULITE	C.L.I.A	SERUM	1ml	N	4
SIANA	ANA SCREENING (IMMUNOFLUORESCENCE)	FULLY AUTOMATED INDIRECT IMMUNOFLUORESCENCE	HELMET	IFA	SERUM	1ml	N	24
ANA17B	ANTINUCLEAR ANTIBODIES-17 BLOT	Membrane bound enzyme immunoassay	HELMED	IMMUNOBLOT	SERUM	2ML	N	24
HPYG	HELICOBACTER PYLORI - IgG	Solid Phase Enzyme Immunoassay	CHORUS	E.L.I.S.A	SERUM	2ml	N	24
ASAB	ANTI SPERM ANTIBODY (ASAB)	Solid Phase Enzyme Immunoassay	ELISA	E.L.I.S.A	SERUM	1ml	N	12
HPYA	HELICOBACTER PYLORI - IgA	Solid Phase Enzyme Immunoassay	CHORUS	E.L.I.S.A	SERUM	2ml	N	24
RIANA	ANA TITRE (IMMUNOFLUORESCENCE)	FULLY AUTOMATED INDIRECT IMMUNOFLUORESCENCE	HELMET	IFA	SERUM	1ml	N	24
SEGB	SERUM GLOBULIN	DERIVED FROM SERUM ALBUMIN AND PROTEIN VALUES	OLYMPUS	PHOTOMETRY	SERUM	1ml	N	3
NTSH	NEONATAL THYROID STIMULATING HORMONE # (TSH)	Fully Automated Bidirectionally Interfaced Chemi Luminescent Immuno Assay	CENTAUR	C.L.I.A	EDTA	2ml	N	3
B2G1M	BETA 2 GLYCOPROTEIN 1 - IgM	SOLID PHASE ENZYME IMMUNOASSAY	MANUAL	E.L.I.S.A	SERUM	2ML	N	48
LDL	LDL CHOLESTEROL - DIRECT	Homogenous Enzymatic Colorimetric Assay	OLYMPUS	PHOTOMETRY	SERUM	1ml	Y	3
AFB-D13	AFB DRUG SUSCEPTIBILITY (13 DRUGS)	ADVANCED FLUOROMETRIC TECHNOLOGY	MANUAL	AUTOMATED BACTEC MGIT 960	PURE CULTURE	3ml	N	1008
AFB-SIRE	AFB DRUG SUSCEPTIBILITY (SIRE) 1ST LINE	ADVANCED FLUOROMETRIC TECHNOLOGY	MANUAL	AUTOMATED BACTEC MGIT 960	PURE CULTURE	3ml	N	1008
CG001	KARYOTYPING	PERIPHERAL BLOOD CULTURE,	MANUAL	KARYOTYPING	SODIUM	1ml	N	288

Test Code	Test Description	Methodology	Machine Name	Technology	Sample Type	Vol	Fasting	TAT
		CHROMOSOME PREPARATION AND G-BANDING			HEPARIN			
B2G1G	BETA 2 GLYCOPROTEIN 1 - IgG	SOLID PHASE ENZYME IMMUNOASSAY	MANUAL	E.L.I.S.A	SERUM	2ML	N	48
LP_M	LEPTOSPIRA-IgM	Solid Phase Enzyme Immunoassay	ELISA	E.L.I.S.A	SERUM	1ml	N	12
AFB-SIREP	AFB DRUG SUSCEPTIBILITY (SIREP) 1ST LINE	ADVANCED FLUOROMETRIC TECHNOLOGY	MANUAL	AUTOMATED BACTEC MGIT 960	PURE CULTURE	3ml	N	1008
AFB-MACC	AFB DRUG SUSCEPTIBILITY (MACC) 2ND LINE	ADVANCED FLUOROMETRIC TECHNOLOGY	MANUAL	AUTOMATED BACTEC MGIT 960	PURE CULTURE	3ml	N	1008
VD125	VITAMIN D 1,25 - DIHYDROXY	IMMUNOENZYMETRIC ASSAY	MANUAL	E.L.I.S.A	SERUM	2ML	N	72
AFB-KEPO	AFB DRUG SUSCEPTIBILITY (KEPO) 2ND LINE	ADVANCED FLUOROMETRIC TECHNOLOGY	MANUAL	AUTOMATED BACTEC MGIT 960	PURE CULTURE	3ml	N	1008
CG003	KARYOTYPING COUPLES - WIFE	Peripheral Blood Culture, Chromosome Preparation and G-Banding	MANUAL	KARYOTYPING	SODIUM HEPARIN	1ml	N	288
CG002	KARYOTYPING COUPLES - HUSBAND	Peripheral Blood Culture, Chromosome Preparation and G-Banding	MANUAL	KARYOTYPING	SODIUM HEPARIN	1ml	N	288
CARB	CARBAMAZEPINE / TEGRETOL	Fully Automated Chemi Luminescent Immuno Assay	CENTAUR	C.L.I.A	SERUM	1ml	N	3
CHL_G	ANTI CHLAMYDIA ANTIBODY IGG	Solid Phase Enzyme Immunoassay	ELISA	E.L.I.S.A	SERUM	2ml	N	48
CHL_M	ANTI CHLAMYDIA ANTIBODY IGM	Solid Phase Enzyme Immunoassay	ELISA	E.L.I.S.A	SERUM	2ml	N	48
HBVQL	HEPATITIS B VIRUS (HBV) QUALITATIVE PCR	RT-PCR	QIAGEN	REAL TIME PCR	EDTA	2ML	N	48
ERYP	ERYTHROPOIETIN	Fully Automated Chemi Luminescent Immuno Assay	IMMULITE	C.L.I.A	SERUM	3ml	N	4
ALDOS	ALDOSTERONE	FULLY AUTOMATED CHEMI LUMINESCENT IMMUNO ASSAY	DIASORIN LIAISON	C.L.I.A	EDTA	2ML	N	12
VITE	VITAMIN E	LIQUID CHROMATOGRAPHY TANDEM MASS SPECTROMETRY	LC-MS	LC-MS/MS	SERUM	1ml	N	24
VITA	VITAMIN A	LIQUID CHROMATOGRAPHY TANDEM MASS SPECTROMETRY	LC-MS	LC-MS/MS	SERUM	1ml	N	24
CYST	CYSTATIN C	LATEX ENHANCED IMMUNOTURBIDIMETRY	ADVIA 2400	IMMUNOTURBIDIMETRY	SERUM	2ML	N	24
TB005	SMEAR AFB	MICROSCOPY	MANUAL	ZN STAIN AND MICROSCOPY	SPUTUM	3ml	N	24

Test Code	Test Description	Methodology	Machine Name	Technology	Sample Type	Vol	Fasting	TAT
E3	UNCONJUGATED ESTRIOL (E3)	Fully Automated Chemi Luminescent Immuno Assay	IMMULITE	C.L.I.A	SERUM	1ml	N	4
TPAB	TREPONEMA PALLIDUM ANTIBODY (TPAB)	COMPETITIVE ENZYME IMMUNOASSAY	ELISA	E.L.I.S.A	SERUM	1ml	N	48
PAPPA	PREGNANCY ASSOCIATED PLASMA PROTEIN A	Fully Automated Chemi Luminescent Immuno Assay	IMMULITE	C.L.I.A	SERUM	1ml	N	4
LKM1	LIVER KIDNEY MICROSOMES	IMMUNOENZYMATIC ASSAY	CHORUS	E.L.I.S.A	SERUM	2ML	N	48
TB002	GENEXPERT	CARTRIDGE BASED NUCLEIC ACID AMPLIFICATION TEST (CBNAAT)	MANUAL	XPERT MTB/RIF,REAL TIME PCR	SPUTUM	3ml	N	24
SCL70	ANTI SCL - 70 ANTIBODY	SOLID PHASE ENZYME IMMUNOASSAY	MANUAL	E.L.I.S.A	SERUM	3ml	N	48
VITK	VITAMIN K	LIQUID CHROMATOGRAPHY TANDEM MASS SPECTROMETRY	LC-MS	LC-MS/MS	SERUM	1ml	N	24
COTIN	COTININE	RAPID IMMUNOASSAY	OFFLINE	IMMUNOASSAY	URINE	2ml	N	12
DREN	DIRECT RENIN	FULLY AUTOMATED SANDWICH CHEMI LUMINESCENT IMMUNO ASSAY	DIASORIN LIAISON	C.L.I.A	EDTA	2ML	Y	12
NIME	NICOTINE METABOLITES	SOLID PHASE CAPTURE ENZYME IMMUNOASSAY	IMMULITE	C.L.I.A	SERUM	2ML	N	12
TB007	AFB CULTURE (MGIT)	ADVANCED FLUOROMETRIC TECHNOLOGY	MANUAL	AUTOMATED BACTEC MGIT 960	SPUTUM	3ml	N	1008
INHIB	INHIBIN A	SEQUENTIAL TWO-STEP IMMUNOENZYMATIC (SANDWICH) ASSAY	BECKMAN ACCESS 2	C.L.I.A	SERUM	1ml	N	12
FBHCG	FREE BETA HCG	Fully Automated Chemi Luminescent Immuno Assay	IMMULITE	C.L.I.A	SERUM	1ml	N	4
GBMG	ANTI GLOMERULAR BASEMENT MEMBRANE PROTEIN - IgG	IMMUNOENZYMATIC ASSAY	CHORUS	E.L.I.S.A	SERUM	2ML	N	48
CDT	CARBOHYDRATE DEFICIENT TRANSFERRIN	FULLY AUTOMATED NEPHELOMETRY-BN-II	BN-II	NEPHELOMETRY	SERUM	3ml	N	12
CG012	FISH - BCR-ABL FOR CML/AML/ALL	FISH	MANUAL	HYBRIDIZATION	SODIUM HEPARIN	2ML	N	120
CG004	KARYOTYPING FOR AMBIGUOUS GENETALIA	Peripheral Blood Culture, Chromosome Preparation and G-Banding	MANUAL	KARYOTYPING	SODIUM HEPARIN	1ml	N	288
TB003	TB MDR SCREEN (LPA)	DETECTION OD MTBC AND RESISTANCE TO RIFAMPICIN & ISONIAZID	MANUAL	LINE PROBE ASSAY	SPUTUM	3ml	N	72
TB014	ANTIBIOGRAM - MTB (AMIKACIN)	ADVANCED FLUOROMETRIC	MANUAL	AUTOMATED BACTEC	PURE	3ml	N	504

Test Code	Test Description				Methodology	Machine Name	Technology		Sample Type	Vol	Fasting	TAT
					TECHNOLOGY		MGIT 960		CULTURE			
TB020	ANTIBIOGRAM - MTB (LINEZOLID)				ADVANCED FLUOROMETRIC TECHNOLOGY	MANUAL	AUTOMATED BACTEC MGIT 960		PURE CULTURE	3ml	N	504
CG006	FISH - FOR SEX CHROMOSOME ANOMALIES				FISH	MANUAL	HYBRIDIZATION		SODIUM HEPARIN	2ML	N	120
CG013	FISH - PML/RARA IN APL				FISH	MANUAL	HYBRIDIZATION		SODIUM HEPARIN	2ML	N	120
CG010	METAPHASE FISH 22Q MICRODELETION-DI-GEORGE SYNDROME				FISH	MANUAL	HYBRIDIZATION		SODIUM HEPARIN	2ML	N	180
CG005	FISH - DOWN'S SYNDROME				FISH	MANUAL	HYBRIDIZATION		SODIUM HEPARIN	2ML	N	120
TB018	ANTIBIOGRAM - MTB (ETHIONAMIDE)				ADVANCED FLUOROMETRIC TECHNOLOGY	MANUAL	AUTOMATED BACTEC MGIT 960		PURE CULTURE	3ml	N	504
CG007	FISH - CHROMOSOME 18/X/Y				FISH	MANUAL	HYBRIDIZATION		SODIUM HEPARIN	2ML	N	120
CG011	METAPHASE FISH-15Q-DELETION-PRADER WILLI SYNDROME				FISH	MANUAL	HYBRIDIZATION		SODIUM HEPARIN	2ML	N	180
CG014	FISH - AMLI/ETO IN AML M2				FISH	MANUAL	HYBRIDIZATION		SODIUM HEPARIN	2ML	N	120
CG008	FISH - CHROMOSOME 13/21				FISH	MANUAL	HYBRIDIZATION		SODIUM HEPARIN	2ML	N	120
CG009	ANEUPLOIDY FISH (13,18,21,X & Y)				FISH	MANUAL	HYBRIDIZATION		SODIUM HEPARIN	2ML	N	120
TB019	ANTIBIOGRAM - MTB (KANAMYCIN)				ADVANCED FLUOROMETRIC TECHNOLOGY	MANUAL	AUTOMATED BACTEC MGIT 960		PURE CULTURE	3ml	N	504
TB015	ANTIBIOGRAM - MTB (CAPREOMYCIN)				ADVANCED FLUOROMETRIC TECHNOLOGY	MANUAL	AUTOMATED BACTEC MGIT 960		PURE CULTURE	3ml	N	504
TB016	ANTIBIOGRAM - MTB (CLOFAZIMINE)				ADVANCED FLUOROMETRIC TECHNOLOGY	MANUAL	AUTOMATED BACTEC MGIT 960		PURE CULTURE	3ml	N	504
TB017	ANTIBIOGRAM - MTB (ETHAMBUTOL)	ADVANCED FLUOROMETRIC TECHNOLOGY	MANUAL	AUTOMATED BACTEC MGIT 960	PURE CULTURE		3ml	N		504		
TB021	ANTIBIOGRAM - MTB (MOXIFLOXACIN)	ADVANCED FLUOROMETRIC TECHNOLOGY	MANUAL	AUTOMATED BACTEC MGIT 960	PURE CULTURE		3ml	N		504		
TB022	ANTIBIOGRAM - MTB (MOXIFLOXACIN HIGHER DOSE)	ADVANCED FLUOROMETRIC TECHNOLOGY	MANUAL	AUTOMATED BACTEC MGIT 960	PURE CULTURE		3ml	N		504		

Test Code	Test Description				Methodology	Machine Name	Technology		Sample Type	Vol	Fasting	TAT
TB023	ANTIBIOGRAM - MTB (OFLOXACIN)	ADVANCED FLUOROMETRIC TECHNOLOGY	MANUAL	AUTOMATED BACTEC MGIT 960	PURE CULTURE	3ml	N	504				
TB024	ANTIBIOGRAM - MTB (PAS)	ADVANCED FLUOROMETRIC TECHNOLOGY	MANUAL	AUTOMATED BACTEC MGIT 960	PURE CULTURE	3ml	N	504				
TB025	ANTIBIOGRAM - MTB (PYRAZINAMIDE)	ADVANCED FLUOROMETRIC TECHNOLOGY	MANUAL	AUTOMATED BACTEC MGIT 960	PURE CULTURE	3ml	N	504				
TB026	ANTIBIOGRAM - MTB (RIFABUTIN)	ADVANCED FLUOROMETRIC TECHNOLOGY	MANUAL	AUTOMATED BACTEC MGIT 960	PURE CULTURE	3ml	N	504				
TB027	ANTIBIOGRAM - MTB (RIFAMPICIN)	ADVANCED FLUOROMETRIC TECHNOLOGY	MANUAL	AUTOMATED BACTEC MGIT 960	PURE CULTURE	3ml	N	504				
TB028	ANTIBIOGRAM - MTB (STREPTOMYCIN)	ADVANCED FLUOROMETRIC TECHNOLOGY	MANUAL	AUTOMATED BACTEC MGIT 960	PURE CULTURE	3ml	N	504				
TB029	ANTIBIOGRAM - MTB (ISONIAZID)	ADVANCED FLUOROMETRIC TECHNOLOGY	MANUAL	AUTOMATED BACTEC MGIT 960	PURE CULTURE	3ml	N	504				
TB004	TB XDR SCREEN (LPA)	DETECTION OF MTBC AND RESISTANCE TO FQ, AND SLI	MANUAL	LINE PROBE ASSAY	SPUTUM	3ml	N	72				
TB013	AFB DRUG SUSCEPTIBILITY - MOTT	BROTH DILUTION	MANUAL	BROTH DILUTION	PURE CULTURE	3ml	N	360				

Test Profiles List (Details of the Test Profiles in Pictorial form enlisted below)

Sr.No	Short Name	Profile Name	Sample Type	B2B	EDTA
1	INFERTILITY	COMPLETE INFERTILITY	SEBL	2500	H6 HBA
2	H4T	H4T - PROFILE	SEBL	600	HBA
3	H5T	H5T - PROFILE	SEBL	700	H6 HBA
4	HEP B	HEPATITIS B PROFILE	SEBL	1500	H6 HBA
5	HEP TOT	HEPATITIS PANEL	SEBL	2500	H6 HBA
6	PRE - MARI	PREMARITAL PROFILE	SEBL	1000	BTHAL H6 HBA
7	CNATP	CHILDREN NUTRITION AND TOXICITY PROFILE	SEBL	1200	BEAP BTHAL G6PD H6
8	ADIF	ADVANCED INFERTILITY PROFILE	SEBL	2100	H6 HBA
9	PRE OP	PRE OPERATIVE PROFILE	SEBL	600	H6 HBA
10	FEVER	FEVER PROFILE	SEBL	150	H6 MA
11	FEVER PP	FEVER PLUS PROFILE	SEBL	800	H6 MA
12	MINITP	MINI THALASSEMIA PROFILE	SEBL	250	H6
13	MAXTP	MAX THALASSEMIA PROFILE	SEBL	1000	H6
14	ARTHRITIS M	ARTHRITIS PROFILE - M	SEBL	560	H6 HBA
15	ARTHRITIS A	ARTHRITIS PROFILE - A	SEBL	1040	H6 HB27 HBA
16	ARTHRITIS B	ARTHRITIS PROFILE - B	SEBL	1440	H6 HB27 HBA
17	ARTHRITIS C	ARTHRITIS PROFILE - C	SEBL	1920	H6 HB27 HBA
18	ANEMIA M	ANEMIA PROFILE - M	SEBL	560	H6 HBA
19	ANEMIA A	ANEMIA PROFILE - A	SEBL	720	H6 HBA
20	ANEMIA B	ANEMIA PROFILE - B	SEBL	960	BEAP H6 HBA
21	ANEMIA C	ANEMIA PROFILE - C	SEBL	1120	AHEL BEAP BTHAL H6 HBA
22	CARDIAC A	CARDIAC PROFILE - A	SEBL	800	H6 HBA
23	CARDIAC B	CARDIAC PROFILE - B	SEBL	1000	H6 HBA
24	CARDIAC C	CARDIAC PROFILE - C	SEBL	1400	H6 HBA
25	ANC P	ANC PROFILE	SEBL	500	H6
26	TP-C	THYROID PROFILE - C	SEBL	1060	H6 HBA
27	HYP-M	HYPERTENSION PROFILE - M	SEBL	990	DREN H6 HBA
28	NBS	NEW BORN SCREENING PROFILE	EDTA	3000	-
29	TP-A	THYROID PROFILE - A	SERUM	250	-
30	VDP	VITAMIN D PROFILE	SERUM	500	-
31	CARD MARK	CARDIAC RISK MARKERS	SERUM	600	-

Sr.No	Short Name	Profile Name	Sample Type	B2B	EDTA
32	FATSVP	FAT - SOLUBLE VITAMINS PROFILE	SERUM	1000	-
33	LFT	LIVER FUNCTION TESTS	SERUM	150	-
34	TP-B	THYROID PROFILE - B	SERUM	600	-
35	FIP	FEMALE INFERTILITY PROFILE	SERUM	2000	-
36	INFERTILITY C	INFERTILITY PROFILE - C	SERUM	2000	-
37	INFERTILITY A	INFERTILITY PROFILE - A	SERUM	1000	-
38	KIDPRO	KIDPRO	SERUM	120	-
39	TFT	T3-T4-TSH	SERUM	60	-
40	STD	STD PROFILE	SERUM	2000	-
41	STEROID	STEROID PROFILE	SERUM	1500	-
42	TRIPLE	TRIPLE MARKER - SECOND TRIMESTER	SERUM	1000	-
43	VITA PRO	VITAMIN PROFILE	SERUM	600	-
44	CARDIAC M	CARDIAC PROFILE - M	SERUM	480	-
45	H3T	H3T - PROFILE	SERUM	500	-
46	BONE C	BONE PROFILE - C	SERUM	960	-
47	HYP-C	HYPERTENSION PROFILE - C	USB	2600	-
48	TLFP	TSH-LH-FSH-PRL	SERUM	300	-
49	QMST	QUADRUPLE MARKER - SECOND TRIMESTER	SERUM	1500	-
50	BONE M	BONE PROFILE - M	SERUM	480	-
51	TORCH8	TORCH ALL EIGHT	SERUM	800	-
52	TUMOUR F	TUMOUR PANEL (FEMALE)	SERUM	1500	-
53	INFERTILITY B	INFERTILITY PROFILE - B	SERUM	1600	-
54	IRONPRO	IRON DEFICIENCY PROFILE	SERUM	100	-
55	INFERTILITY M	INFERTILITY PROFILE - M	SERUM	600	-
56	LIPID	LIPID PROFILE	SERUM	100	-
57	TORCH10	TORCH ALL TEN	SERUM	1000	-
58	TUMOUR M	TUMOUR PANEL (MALE)	SERUM	1200	-
59	DCP	DIABETIC CAMP PROFILE	USB	850	-
60	DOUBLE	DOUBLE MARKER - FIRST TRIMESTER	SERUM	1000	-
61	BONE A	BONE PROFILE - A	SERUM	600	-
62	BONE B	BONE PROFILE - B	SERUM	720	-
63	WBCVP	VITAMIN B COMPLEX PROFILE	SERUM	1000	-
64	UOA	URINARY ORGANIC ACIDS (42)	URINE	3000	-
65	HYP-B	HYPERTENSION PROFILE - B	USB	1900	-

Sr.No	Short Name	Profile Name	Sample Type	B2B	EDTA
66	HYP-A	HYPERTENSION PROFILE - A	USB	1340	

Showing 1 to 66 of 66 entries



Complete Infertility

*Don't take infertility as a curse!
Complete infertility profile covers tests which help to detect and understand the cause of infertility.*

280815_2

Profile Includes (45 Parameters)

- **Infertility Profile (8)**
Free Testosterone
17 - OH Progesterone
Androstenedione (A4)
DHEA - Sulphate (DHEAS)
Sex Hormone Binding Globulin (SHBG)
Luteinising Hormone (LH)
Prolactin (PRL)
Follicle Stimulating Hormone (FSH)
- **Thyroid Profile (3)**
Total Triiodothyronine (T3)
Total Thyroxine (T4)
Thyroid Stimulating Hormone (TSH)
- **Diabetic Screen (2)**
HbA1c
Average Blood Glucose
- **Anti Hepatitis C Virus (Anti HCV) - Total**
- **Hepatitis B Surface Antigen (HBsAg)**
- **Testosterone**
- **Vitamin D Total**
- **Complete Hemogram [28]**

H4T Profile

Profile Includes (6 Parameters)

- Average Blood Glucose (ABG)
- HbA1c
- Anti Hepatitis C Virus (Anti HCV) - Total
- HIV ELISA
- Hepatitis B Surface Antigen (HBsAg)
- Thyroid Stimulating Hormone (TSH)

280815_12

H5T Profile

Profile Includes (34 Parameters)

- **Diabetic Screen (2)**
HbA1c
Average Blood Glucose
- **Anti Hepatitis C Virus (Anti HCV) - Total**
- **HIV ELISA**
- **Hepatitis B Surface Antigen (HBsAg)**
- **Thyroid Stimulating Hormone (TSH)**
- **Complete Hemogram (28)**

280815_13



Profile Includes (47 Parameters)

- **Diabetic Screen (2)**
HbA1c
Average Blood Glucose
- **Liver Profile (11)**
Gamma Glutamyl Transferase
Alkaline Phosphate
Bilirubin - Direct
Bilirubin - Total
Bilirubin - Indirect
Protein - Total
Serum Albumin
Serum Globulin
SGOT (AST)
SGPT (ALT)
Serum Albumin / Globulin Ratio
- **Hepatitis Panel (6)**
Anti Hepatitis B Envelope Antigen (AHBe)-Total
Hepatitis B Envelope Antigen (HBeAg)
Anti Hepatitis B Core Antigen (AHBC) - IgM
Anti Hepatitis B Core Antigen (AHBC) - Total
Anti Hepatitis B Surface Antigen (AHBs) - Total
Hepatitis B Surface Antigen (HBsAg)
- **Complete Hemogram (28)**

Hepatitis B Profile

280815_20



Profile Includes (74 Parameters)

- **Blood Elements Profile (9)**
Arsenic
Barium
Cadmium
Caesium
Chromium
Cobalt
Lead
Selenium
Mercury
- **Vitamin Profile (3)**
Vitamin D Total
Vitamin B12
Folate
- **Thyroid Stimulating Hormone [TSH]**
- **Iron Deficiency (3)**
Total Iron Binding Capacity
Serum Iron
% Transferrin Saturation
- **Liver Profile (11)**
Gamma Glutamyl Transferase
Alkaline Phosphatase
Bilirubin - Direct
Bilirubin - Total
Bilirubin - Indirect
Protein - Total
Serum Albumin
Serum Globulin
SGOT (AST)
SGPT (ALT)
Serum Albumin/Globulin Ratio
- **Lipid Profile* (8)**
LDL Cholesterol
Total Cholesterol
HDL Cholesterol
Non - HDL Cholesterol
Triglycerides
VLDL Cholesterol
LDL/HDL Ratio
TC/HDL Cholesterol Ratio
- **Kidney Profile (5)**
Calcium
Uric Acid
Blood Urea Nitrogen
BUN/Serum Creatinine Ratio
- **Thalassemia (5)**
Hemoglobin A2
Hemoglobin C
Hemoglobin D
Hemoglobin F
Hemoglobin S
- **Glucose-6-Phosphate Dehydrogenase (G6PD)**
- **Complete Hemogram (28)**

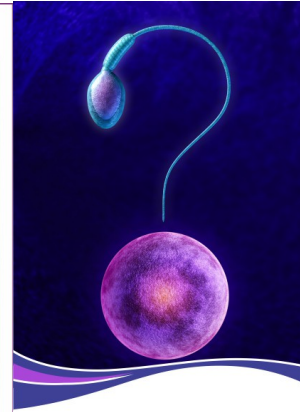
*10-12 hrs fasting is essential



Think Wellness. Think Aarogyam

Children Nutrition and Toxicity Profile

050517_31



Advanced Infertility Profile

Profile Includes (48 Parameters)

- **Steroid Profile (11)**
17-Hydroxyprogesterone
Aldosterone
Androstenedione
Cortisol
Corticosterone
Deoxycortisol
Testosterone
Dehydroepiandrosterone
DHEA - Sulphate (DHEAS)
Estradiol
Progesterone
- **Thyroid Profile (3)**
Total Triiodothyronine (T3)
Total Thyroxine (T4)
Thyroid Stimulating Hormone (TSH)
- **Diabetic Screen (2)**
HbA1c
Average Blood Glucose
- **Infertility Profile (4)**
Prolactin (PRL)
Anti Mullerian Hormone (AMH)
Follicle Stimulating Hormone (FSH)
Luteinising Hormone (LH)
- **Complete Hemogram [28]**

280815_31



Pre-Operative Profile

A surgical intervention or operation generally requires pre-assessment of the health condition of the patient. Our Pre-Op profile includes tests to assess basic overall wellness, before planning for any surgical intervention.

Profile Includes (33 Parameters)

- HbA1c & Average Blood Glucose
- HIV Test (I and II)*
- Hepatitis B Surface Antigen (SAG)
- Anti Hepatitis C Virus (AHCV)
- Complete Hemogram (28)

*HIV test needs pretest counselling forms filled and signed by a medical practitioner

290116



Fever Profile

A very common illness; Fever could be an underlying symptom for something simple like a viral flu to something complicated like malaria. Our fever profile includes a combination of tests to identify cause for this ailment.

Profile Includes (32 Parameters)

- Malarial Antigen (2)
- Typhoid Test (2)
- Complete Hemogram (28)

020416



Mini Thalassemia Profile

(40 Parameters)

- ▶ **Iron Deficiency Profile (4)**
 - Serum Iron
 - Total Iron Binding Capacity
 - % Transferrin Saturation
 - Serum Ferritin
- ▶ Bilirubin-Total
- ▶ Bilirubin-Direct

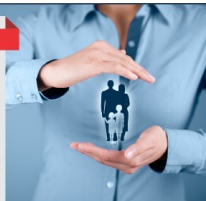
- ▶ Bilirubin-Indirect
- ▶ Aspartate Transaminase (SGOT/AST)
- ▶ Alanine Transaminase (SGPT/ALT)
- ▶ Blood Urea Nitrogen
- ▶ Serum Creatinine
- ▶ BUN/Serum Creatinine Ratio
- ▶ Complete Hemogram [28]

Fasting not essential

(49 Tests) Profile includes

- ▶ **Iron Deficiency Profile (4)**
 - Serum Iron
 - Total Iron Binding Capacity
 - % Transferrin Saturation
 - Serum Ferritin
- ▶ Bilirubin-Total
- ▶ Bilirubin-Direct
- ▶ Bilirubin-Indirect
- ▶ Aspartate Transaminase (SGOT/AST)
- ▶ Alanine Transaminase (SGPT/ALT)
- ▶ Blood Urea Nitrogen
- ▶ Serum Creatinine
- ▶ BUN/Serum Creatinine Ratio
- ▶ Calcium
- ▶ Vitamin D Total
- ▶ **Thyroid Profile [3]**
 - Total Triiodothyronine (T3)
 - Total Thyroxine (T4)
 - Thyroid Stimulating Hormone (TSH)
- ▶ Parathyroid Hormone
- ▶ Hepatitis B surface antigen
- ▶ Anti Hepatitis C virus
- ▶ HIV I & II*
- ▶ Complete Hemogram [28]

*HIV test needs pretest counselling forms filled and signed by a medical practitioner



Max Thalassemia Profile

Fasting not essential



Arthritis Profile - M

Profile Includes (63 Parameters)

- ▶ **Liver Profile [11]**
 - Gamma Glutamyl Transferase
 - Alkaline Phosphatase
 - Bilirubin - Direct
 - Bilirubin - Total
 - Bilirubin - Indirect
 - Protein - Total
 - Serum Albumin
 - Serum Globulin
 - SGOT (AST)
 - SGPT (ALT)
 - Serum Albumin / Globulin Ratio
- ▶ **Cholesterol Profile [8]**
 - LDL Cholesterol
 - Total Cholesterol
 - HDL Cholesterol
 - Non - HDL Cholesterol
 - Triglycerides
 - VLDL Cholesterol
 - LDL/HDL Ratio
 - TC/HDL Cholesterol Ratio
- ▶ **Kidney Profile [5]**
 - Calcium
 - Uric Acid
 - Blood Urea Nitrogen (BUN)
 - Serum Creatinine
 - BUN/Serum Creatinine Ratio
- ▶ **Iron Deficiency Profile [3]**
 - Total Iron Binding Capacity
 - Serum Iron
 - % Transferrin Saturation
- ▶ **Thyroid Profile [3]**
 - Total Triiodothyronine (T3)
 - Total Thyroxine (T4)
 - Thyroid Stimulating Hormone (TSH)
- ▶ **Diabetic Screen [2]**
 - HbA1c
 - Average Blood Glucose
 - C-Reactive Protein (CRP)
 - Rheumatoid Factor (RF)
 - Antinuclear Antibodies (ANA)
- ▶ Complete Hemogram [28]

*10-12 hrs fasting is essential



Arthritis Profile - A

Profile Includes (67 Parameters)

- ▶ **Liver Profile [11]**
 - Gamma Glutamyl Transferase
 - Alkaline Phosphatase
 - Bilirubin - Direct
 - Bilirubin - Total
 - Bilirubin - Indirect
 - Protein - Total
 - Serum Albumin
 - Serum Globulin
 - SGOT (AST)
 - SGPT (ALT)
 - Serum Albumin / Globulin Ratio
- ▶ **Cholesterol Profile [8]**
 - LDL Cholesterol
 - Total Cholesterol
 - HDL Cholesterol
 - Non - HDL Cholesterol
 - Triglycerides
 - VLDL Cholesterol
 - LDL/HDL Ratio
 - TC/HDL Cholesterol Ratio
- ▶ **Kidney Profile [5]**
 - Calcium
 - Uric Acid
 - Blood Urea Nitrogen (BUN)
 - Serum Creatinine
 - BUN/Serum Creatinine Ratio
- ▶ **Iron Deficiency Profile [3]**
 - Total Iron Binding Capacity
 - Serum Iron
 - % Transferrin Saturation
- ▶ **Thyroid Profile [3]**
 - Total Triiodothyronine (T3)
 - Total Thyroxine (T4)
 - Thyroid Stimulating Hormone (TSH)
- ▶ **Diabetic Screen [2]**
 - HbA1c
 - Average Blood Glucose
 - C-Reactive Protein (CRP)
 - Rheumatoid Factor (RF)
 - Antinuclear Antibodies (ANA)
- ▶ Complete Hemogram [28]

*10-12 hrs fasting is essential



Arthritis Profile - C

Profile Includes (75 Parameters)

- ▶ **Liver Profile [11]**
 - Gamma Glutamyl Transferase
 - Alkaline Phosphatase
 - Bilirubin - Direct
 - Bilirubin - Total
 - Bilirubin - Indirect
 - Protein - Total
 - Serum Albumin
 - Serum Globulin
 - SGOT (AST)
 - SGPT (ALT)
 - Serum Albumin / Globulin Ratio
- ▶ **Cholesterol Profile [8]**
 - LDL Cholesterol
 - Total Cholesterol
 - HDL Cholesterol
 - Non - HDL Cholesterol
 - Triglycerides
 - VLDL Cholesterol
 - LDL/HDL Ratio
 - TC/HDL Cholesterol Ratio
- ▶ **Kidney Profile [5]**
 - Calcium
 - Uric Acid
 - Blood Urea Nitrogen (BUN)
 - Serum Creatinine
 - BUN/Serum Creatinine Ratio
- ▶ **Iron Deficiency Profile [3]**
 - Total Iron Binding Capacity
 - Serum Iron
 - % Transferrin Saturation
- ▶ **Thyroid Profile [3]**
 - Total Triiodothyronine (T3)
 - Total Thyroxine (T4)
 - Thyroid Stimulating Hormone (TSH)
- ▶ **Diabetic Screen [2]**
 - HbA1c
 - Average Blood Glucose
- ▶ **C-Reactive Protein (CRP)**
- ▶ **Rheumatoid Factor (RF)**
- ▶ **Antinuclear Antibodies (ANA)**
- ▶ **Antistreptolysin O [ASO]**
- ▶ **Anti-Cyclic Citrullinated Peptide (ACCP)**
- ▶ **Complement 3 (C3)**
- ▶ **HLA-B27**
- ▶ **Serum Electrolytes [3]**
 - Sodium
 - Potassium
 - Chloride
 - Phosphorous
- ▶ **Vitamin D Total**
- ▶ **Vitamin B 12**
- ▶ **ANA Screening (IFA) SIANA**
- ▶ **ANA Titre (IFA) RIANA**
- ▶ **Complete Hemogram [28]**

**10-12 hrs fasting is essential*



Arthritis Profile - B

Profile Includes (73 Parameters)

- ▶ **Liver Profile [11]**
 - Gamma Glutamyl Transferase
 - Alkaline Phosphatase
 - Bilirubin - Direct
 - Bilirubin - Indirect
 - Protein - Total
 - Serum Albumin
 - Serum Globulin
 - SGOT (AST)
 - SGPT (ALT)
 - Serum Albumin / Globulin Ratio
- ▶ **Cholesterol Profile [8]**
 - LDL Cholesterol
 - Total Cholesterol
 - HDL Cholesterol
 - Non - HDL Cholesterol
 - Triglycerides
 - VLDL Cholesterol
 - LDL/HDL Ratio
 - TC/HDL Cholesterol Ratio
- ▶ **Kidney Profile [5]**
 - Calcium
 - Uric Acid
 - Blood Urea Nitrogen (BUN)
 - Serum Creatinine
 - BUN/Serum Creatinine Ratio
- ▶ **Iron Deficiency Profile [3]**
 - Total Iron Binding Capacity
 - Serum Iron
 - % Transferrin Saturation
- ▶ **Thyroid Profile [3]**
 - Total Triiodothyronine (T3)
 - Total Thyroxine (T4)
 - Thyroid Stimulating Hormone (TSH)
- ▶ **Diabetic Screen [2]**
 - HbA1c
 - Average Blood Glucose
- ▶ **C-Reactive Protein (CRP)**
- ▶ **Rheumatoid Factor (RF)**
- ▶ **Antinuclear Antibodies (ANA)**
- ▶ **Antistreptolysin O [ASO]**
- ▶ **Anti-Cyclic Citrullinated Peptide (ACCP)**
- ▶ **Complement 3 (C3)**
- ▶ **HLA-B27**
- ▶ **Serum Electrolytes [3]**
 - Sodium
 - Potassium
 - Chloride
 - Phosphorous
- ▶ **Vitamin D Total**
- ▶ **Vitamin B 12**
- ▶ **Complete Hemogram [28]**

**10-12 hrs fasting is essential*



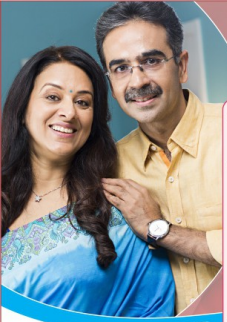
Anemia Profile - M (63 Tests)

Aarogyam

Think Wellness. Think Aarogyam

- ▶ **Iron Deficiency Profile [3]**
 - Total Iron Binding Capacity
 - Serum Iron
 - % Transferrin Saturation
- ▶ **Liver Profile [11]**
 - Gamma Glutamyl Transferase
 - Alkaline Phosphatase
 - Bilirubin - Direct
 - Bilirubin - Total
 - Bilirubin - Indirect
 - Protein - Total
 - Serum Albumin
 - Serum Globulin
 - SGOT (AST)
 - SGPT (ALT)
 - Serum Albumin / Globulin Ratio
- ▶ **Cholesterol Profile [8]**
 - LDL Cholesterol
 - Total Cholesterol
 - HDL Cholesterol
 - Non - HDL Cholesterol
 - Triglycerides
 - VLDL Cholesterol
 - LDL/HDL Ratio
 - TC/HDL Cholesterol Ratio
- ▶ **Kidney Profile [5]**
 - Calcium
 - Uric Acid
 - Blood Urea Nitrogen (BUN)
 - Serum Creatinine
 - BUN/Serum Creatinine Ratio
- ▶ **Thyroid Profile [3]**
 - Total Triiodothyronine (T3)
 - Total Thyroxine (T4)
 - Thyroid Stimulating Hormone (TSH)
- ▶ **Diabetic Screen [2]**
 - HbA1c
 - Average Blood Glucose
- ▶ **Serum Ferritin**
- ▶ **Folate**
- ▶ **Vitamin B12**
- ▶ **Complete Hemogram [28]**

**10-12 hrs fasting is essential*




Aarogyam
Think Wellness. Think Aarogyam

Anemia Profile - A (68 Tests)

- ▶ **Iron Deficiency Profile [3]**
 - Total Iron Binding Capacity
 - Serum Iron
 - % Transferrin Saturation
- ▶ **Liver Profile [11]**
 - Gamma Glutamyl Transferase
 - Alkaline Phosphatase
 - Bilirubin - Direct
 - Bilirubin - Total
 - Bilirubin - Indirect
 - Protein - Total
 - Serum Albumin
 - Serum Globulin
 - SGOT (AST)
 - SGPT (ALT)
 - Serum Albumin / Globulin Ratio
- ▶ **Lipid Profile [8]**
 - LDL Cholesterol
 - Total Cholesterol
 - HDL Cholesterol
 - Non - HDL Cholesterol
 - Triglycerides
 - VLDL Cholesterol
 - LDL/HDL Ratio
 - TC/HDL Cholesterol Ratio
- ▶ **Kidney Profile [5]**
 - Calcium
 - Uric Acid
- Blood Urea Nitrogen (BUN)
- Serum Creatinine
- BUN/Serum Creatinine Ratio
- ▶ **Thyroid Profile [3]**
 - Total Triiodothyronine (T3)
 - Total Thyroxine (T4)
 - Thyroid Stimulating Hormone (TSH)
- ▶ **Diabetic Screen [2]**
 - HbA1c
 - Average Blood Glucose
- ▶ **Serum Electrolytes Profile [3]**
 - Sodium
 - Potassium
 - Chloride
- ▶ **Serum Ferritin**
- ▶ **Vitamin D Total**
- ▶ **Folate**
- ▶ **Vitamin B12**
- ▶ **Lactate dehydrogenase (LDH)**
- ▶ **Complete Hemogram [28]**

*10-12 hrs fasting is essential



Aarogyam
Think Wellness. Think Aarogyam

Cardiac Profile - A

Profile Includes (66 Tests)

- ▶ **Cardiac Risk Markers [6]**
 - Homocysteine
 - Lipoprotein (a)
 - Apolipoprotein - A1
 - Apolipoprotein - B
 - C - Reactive Protein (hsCRP)
 - Apo B/Apo A1 Ratio
- ▶ **Lipid Profile [8]**
 - LDL Cholesterol
 - Total Cholesterol
 - HDL Cholesterol
 - Non - HDL Cholesterol
 - Triglycerides
 - VLDL Cholesterol
 - LDL/HDL Ratio
 - TC/HDL Cholesterol Ratio
- ▶ **Diabetic Screen [2]**
 - HbA1c
 - Average Blood Glucose
- ▶ **Kidney Profile [5]**
 - Calcium
 - Uric Acid
 - Blood Urea Nitrogen (BUN)
 - Serum Creatinine
 - BUN/Serum Creatinine Ratio
- ▶ **Iron Deficiency Profile [3]**
 - Total Iron Binding Capacity
 - Serum Iron
 - % Transferrin Saturation
- ▶ **Thyroid Profile [3]**
 - Total Triiodothyronine (T3)
 - Total Thyroxine (T4)
 - Thyroid Stimulating Hormone (TSH)
- ▶ **Liver Profile [11]**
 - Gamma Glutamyl Transferase
 - Alkaline Phosphatase
 - Bilirubin - Direct
 - Bilirubin - Total
 - Bilirubin - Indirect
 - Protein - Total
 - Serum Albumin
 - Serum Globulin
 - SGOT (AST)
 - SGPT (ALT)
 - Serum Albumin / Globulin Ratio
- ▶ **Complete Hemogram [28]**

*10-12 hrs fasting is essential

Aarogyam

Think Wellness. Think Aarogyam

Profile Includes (69 Tests)

• **Cardiac Risk Markers (6)**

- Homocysteine
- Lipoprotein (a)
- Apolipoprotein - A1
- Apolipoprotein - B
- C - Reactive Protein (hsCRP)
- Apo B/Apo A1 Ratio

• **Lipid Profile (8)**

- LDL Cholesterol
- Total Cholesterol
- HDL Cholesterol
- Non - HDL Cholesterol
- Triglycerides
- VLDL Cholesterol
- LDL/HDL Ratio
- TC/HDL Cholesterol Ratio

• **Diabetic Screen (2)**

- HbA1c
- Average Blood Glucose

• **Kidney Profile (5)**

- Calcium
- Uric Acid
- Blood Urea Nitrogen (BUN)
- Serum Creatinine
- BUN/Serum Creatinine Ratio

• **Iron Deficiency Profile (3)**

- Total Iron Binding Capacity
- Serum Iron
- % Transferrin Saturation

• **Thyroid Profile (3)**

- Total Triiodothyronine (T3)
- Total Thyroxine (T4)
- Thyroid Stimulating Hormone (TSH)

• **Liver Profile (11)**

- Gamma Glutamyl Transferase
- Alkaline Phosphatase
- Bilirubin - Direct
- Bilirubin - Total
- Bilirubin - Indirect
- Protein - Total
- Serum Albumin
- Serum Globulin
- SGOT (AST)
- SGPT (ALT)
- Serum Albumin / Globulin Ratio

• **Vitamin Profile (2)**

- Vitamin D Total
- Vitamin B12

• **Lp-PLA 2**

- Complete Hemogram (28)

Cardiac Profile - C



Aarogyam

Think Wellness. Think Aarogyam

Presents

ANC Profile

* HIV test needs pretest counselling forms filled and signed by a medical practitioner

Profile Includes (35 Parameters)

• **Thyroid Profile (3)**

- Total Triiodothyronine [T3]
- Total Thyroxine [T4]
- Thyroid Stimulating Hormone [TSH]

• **Complete Hemogram (28)**

- Basophils - absolute count
 - Eosinophils - absolute count
 - Eosinophile
 - Lymphocytes - absolute count
 - Monocytes - absolute count
 - Monocytes
 - Neutrophils - absolute count
 - Neutrophils
 - Erythrocyte sedimentation rate (ESR)
 - Hemoglobin
 - Immature granulocytes (IG)
 - Immature granulocyte percentage (IG%)
 - Total leucocytes count
 - Lymphocyte percentage
 - Mean corpuscular hemoglobin (MCH)
 - Mean corp. hemo. concentration (MCHC)
 - Mean corpuscular volume (MCV)
 - Mean platelet volume (MPV)
 - Nucleated red blood cells
 - Plateletcrit (PCT)
 - Hematocrit (PCV)
 - Platelet distribution width (PDW)
 - Platelet to large cell ratio (PLCR)
 - Platelet count
 - Total RBC
 - Red cell distribution width (RDW-CV)
 - Red cell distribution width - SD (RDW-SD)
- **HIV 1 & II***
- **HEPATITIS B SURFACE ANTIGEN (HBsAg)**
 - **SYPHILIS - VDRL**
 - **ANTI HEPATITIS C VIRUS (Anti HCV) - TOTAL**

Profile Includes (66)

- **Vitamin Profile (2)**

Vitamin D Total
Vitamin B12

- **Thyroid Profile (5)**

Total Triiodothyronine [T3]
Total Thyroxine [T4]
Thyroid Stimulating Hormone [TSH]
Free Triiodothyronine (FT3)
Free Thyroxine (FT4)

- **Diabetic Screen (2)**

HbA1c
Average Blood Glucose

- **Iron Deficiency Profile (3)**

Serum Iron
Total Iron Binding Capacity
% Transferrin Saturation

- **Liver Profile (11)**

Gamma Glutamyl Transferase
Alkaline Phosphatase
Bilirubin - Direct
Bilirubin - Total
Bilirubin - Indirect
Protein - Total
Serum Albumin
Serum Globulin
SGOT [AST]

SGPT [ALT]

Serum Albumin/Globulin Ratio

- **Lipid Profile (8)**

Total Cholesterol
HDL Cholesterol
Non - HDL Cholesterol
Triglycerides
LDL Cholesterol
VLDL Cholesterol
TC / HDL Cholesterol Ratio
LDL / HDL Ratio

- **Kidney Profile (5)**

Calcium
Uric Acid
Blood Urea Nitrogen
Serum Creatinine
BUN/ Serum Creatinine Ratio

- **Complete Hemogram (28)**

• **Anti Thyroglobulin Antibody (ATG)**
• **Anti Microsomal Antibody (AMA)**

10 -12 hrs fasting is essential



Thyroid Profile - C

Hypertension Profile - M

Profile Includes (60)

- **Thyroid Profile (3)**

Total Triiodothyronine [T3]
Total Thyroxine [T4]
Thyroid Stimulating Hormone [TSH]

- **Diabetic Screen (2)**

HbA1c
Average Blood Glucose

- **Liver Profile (11)**

Gamma Glutamyl Transferase
Alkaline Phosphatase
Bilirubin - Direct
Bilirubin - Total
Bilirubin - Indirect
Protein - Total
Serum Albumin
Serum Globulin
SGOT [AST]
SGPT [ALT]
Serum Albumin/Globulin Ratio

- **Lipid Profile (8)**

Total Cholesterol
HDL Cholesterol

Non - HDL Cholesterol

Triglycerides

LDL Cholesterol

VLDL Cholesterol

TC / HDL Cholesterol Ratio

LDL / HDL Ratio

- **Kidney Profile (5)**

Calcium
Uric Acid
Blood Urea Nitrogen

Serum Creatinine

BUN/ Serum Creatinine Ratio

- **Complete Hemogram (28)**

• **Cortisol**

• **Aldosterone**

• **Direct Renin**

10 -12 hrs fasting is essential



• **NBS Amino acids & Acylcarnitines Profile (37 Tests)**

- » Glycine
- » Alanine
- » Valine
- » Leucine
- » Ornithine
- » Methionine
- » Phenylalanine
- » Arginine
- » Citrulline
- » Tyrosine
- » Argininosuccinic Acid
- » Free Carnitine (C0)
- » Acetyl Carnitine (C2)
- » Propionyl Carnitine (C3)
- » Isobutyryl- Butyryl -carnitine (C4)
- » Isovaleryl-2-methylbutyryl -carnitine (C5)
- » Tiglyl-carnitine (C5:1)
- » 3-Hydroxybutyryl-carnitine (C4OH)
- » Hexanoyl-carnitine (C6)
- » 3-OH Isovaleryl-2methyl-3-OH Butyryl-carnitine (CSOH)
- » Octanoyl-carnitine (C8)
- » Malonyl-carnitine (C3DC)
- » Decanoyl-carnitine (C10)
- » Decenoyl-carnitine (C10:1)
- » Glutaryl-carnitine (CSDC)
- » Dodecanoyl-carnitine (C12)
- » Tetradecanoyl-(myristoyl) -carnitine (C14)
- » Tetradecenoyl-carnitine (C14:1)
- » Hexadecanoyl-(palmitoyl) -carnitine (C16)
- » 3-Hydroxyhexadecenoyl -carnitine (C16:1-OH)
- » 3-Hydroxyhexadecenoyl -carnitine (C16OH)
- » 3-Hydroxyoctadecenoyl -carnitine (C18:1OH)
- » Octadecanoyl-(stearyl) -carnitine (C18)
- » 3-Hydroxyoctadecenoyl -carnitine (C18-OH)
- » Octadecenoyl-carnitine (C18:1)
- » Octadecadienoyl-carnitine (C18:2)
- » Methylglutaryl Carnitine (GGDC)

- **NBS Biochemical Profile (07 Tests)**
- » Neonatal Biotinidase
 - » Neonatal G6PD
 - » Neonatal Immunoreactive Trypsin
 - » Neonatal 17 Alpha-hydroxyprogesterone
 - » Neonatal Phenylketonuria
 - » Neonatal Total Galactose
 - » Thyroid Stimulating Hormone



Presents
**NEWBORN
SCREENING
PROFILE (44 Tests)**



Thyroid Profile - A

Profile Includes (5)

- Total Triiodothyronine (T3)
- Total Thyroxine (T4)
- Thyroid Stimulating Hormone (TSH)
- Free Triiodothyronine (FT3)
- Free Thyroxine (FT4)

Includes tests to evaluate levels of thyroid hormones essential to determine the functioning of the thyroid gland.

Fasting not essential



Aarogyam[®]

Think Wellness. Think Aarogyam

Profile Includes (24 Tests)

- › Luteinising Hormone (LH)
- › Follicle Stimulating Hormone (FSH)
- › Prolactin (PRL)
- › Total Triiodothyronine (T3)
- › Total Thyroxine (T4)
- › Thyroid Stimulating Hormone (TSH)
- › Anti-Mullerian Hormone (AMH)
- › Steroid Profile (14)
 - Aldosterone
 - Androstenedione
 - Cortisol
 - Corticosterone
 - Deoxycortisol
 - Dehydroepiandrosterone (DHEA)
 - Estradiol
 - DHEA - Sulphate
 - 17 - Hydroxyprogesterone
 - Progesterone
 - Testosterone
 - Vitamin D total
 - Vitamin D2
 - Vitamin D3
- › HIV - I & II*
- › Anti Hepatitis C Virus (Anti HCV) - Total

Infertility Profile - C

Fasting not essential | *HIV test needs pretest counselling forms filled and signed

Infertility Profile - A

Profile Includes (10 Tests)

- › Luteinising Hormone (LH)
- › Follicle Stimulating Hormone (FSH)
- › Prolactin (PRL)
- › Total Triiodothyronine (T3)
- › Total Thyroxine (T4)
- › Thyroid Stimulating Hormone (TSH)
- › Anti-Mullerian Hormone (AMH)
- › 17-OH Progesterone
- › Androstenedione (A4)
- › DHEA - Sulphate (DHEA-S)

Fasting not essential



280815_8



KIDPRO

Profile Includes (5 Parameters)

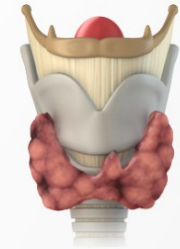
- ›› Calcium
- ›› Uric Acid
- ›› Blood Urea Nitrogen (BUN)
- ›› Serum Creatinine
- ›› BUN / Sr.Creatinine Ratio



Thyroid Profile

Includes tests to evaluate levels of thyroid hormones essential to determine the functioning of the thyroid gland.

280815_1



Profile Includes (3 Parameters)

- ›› **T3** (Total Triiodothyronine)
- ›› **T4** (Total Thyroxine)
- ›› **TSH** (Thyroid Stimulating Hormone)



STD Profile

Profile Includes (9 Parameters)

- Anti Hepatitis C Virus (Anti HCV) - Total
- Anti Chlamydia Antibody IgG
- Anti Chlamydia Antibody IgM
- HIV Elisa
- Herpes Simplex Virus II (HSV) - IgG
- Herpes Simplex Virus II (HSV) - IgM
- Hepatitis B Surface Antigen (HbSAg)
- *Treponema pallidum* Antibody (TPAB)
- *Treponema pallidum* Haemagglutination (TPHA)

280815_27



Steroid Profile

Profile Includes (14 Parameters)

- **Steroid Profile (9)**
 - 17-Hydroxyprogesterone
 - Aldosterone
 - Androstenedione
 - Cortisol
 - Corticosterone
 - Deoxycortisol
 - Dehydroepiandrosterone
 - DHEA - Sulphate (DHEAS)
 - Estradiol
- **Vitamin D Profile (3)**
 - Vitamin D Total
 - Vitamin D2
 - Vitamin D3
- **Progesterone**
- **Testosterone**

A complete diagnostic profile for men and women aiding estimation of steroid hormones to assist in determination of infertility and other developmental disorders.

060116_28




Triple Marker Second Trimester

Profile Includes (3 Parameters)

- Alpha-Feto protein (AFP)
- Beta HCG
- Unconjugated Estriol (E3)

280815_16

Vitamin Profile



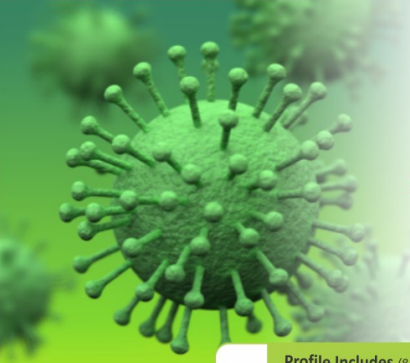
Profile Includes (5 Parameters)

- » Calcium
- » Folate
- » Thyroid Stimulating Hormone [TSH]
- » Vitamin B-12
- » 25-OH Vitamin D Total

This profile includes biomarkers that aid in determining bone health, thyroid as well as iron status which in totality provide an overall picture of health.

050517_22

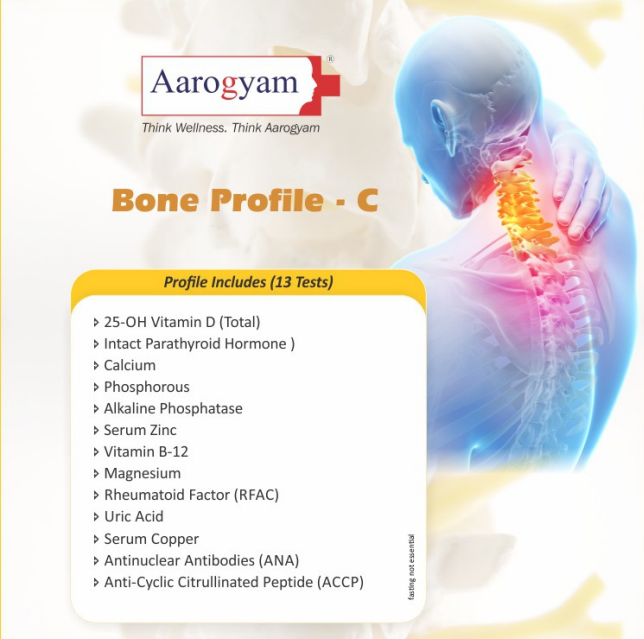
TORCH ALL EIGHT



Profile Includes (8 Parameters)

- Cytomegalovirus (CMV) - IgG
- Cytomegalovirus (CMV) - IgM
- Herpes Simplex Virus (HSV) - IgG
- Herpes Simplex Virus (HSV) - IgM
- Rubella - IgG
- Rubella - IgM
- Toxoplasma Gondii - IgG
- Toxoplasma Gondii - IgM

280815_7



Aarogyam
Think Wellness. Think Aarogyam

Bone Profile - C

Profile Includes (13 Tests)

- » 25-OH Vitamin D (Total)
- » Intact Parathyroid Hormone
- » Calcium
- » Phosphorous
- » Alkaline Phosphatase
- » Serum Zinc
- » Vitamin B-12
- » Magnesium
- » Rheumatoid Factor (RFAC)
- » Uric Acid
- » Serum Copper
- » Antinuclear Antibodies (ANA)
- » Anti-Cyclic Citrullinated Peptide (ACCP)


Imaging not essential

Hypertension Profile - C

Profile Includes (79)

- **Thyroid Profile (3)**
Total Triiodothyronine [T3]
Total Thyroxine [T4]
Thyroid Stimulating Hormone [TSH]
- **Diabetic Screen (4)**
HbA1c
Average Blood Glucose
Fructosamine
Blood Ketone (B3HB)
- **Iron Deficiency Profile (3)**
Serum Iron
Total Iron Binding Capacity
% Transferrin Saturation
- **Liver Profile (11)**
Gamma Glutamyl Transferase
Alkaline Phosphatase
Bilirubin - Direct
Bilirubin - Total
Bilirubin - Indirect
Protein - Total
Serum Albumin
Serum Globulin
SGOT [AST]
SGPT [ALT]
Serum Albumin/Globulin Ratio


- **Lipid Profile (8)**
Total Cholesterol
HDL Cholesterol
Non - HDL Cholesterol
Triglycerides
LDL Cholesterol
VLDL Cholesterol
TC / HDL Cholesterol Ratio
LDL / HDL Ratio
- **Kidney Profile (5)**
Calcium
Uric Acid
Blood Urea Nitrogen
Serum Creatinine
BUN/ Serum Creatinine Ratio
- **Complete Hemogram (28)**
- **Cortisol**
- **Aldosterone**
- **Direct Renin**
- **Serum Electrolytes (3)**
- **Microalbuminuria (3)**
- **Cardiac Risk Markers (5)**
- **Homocysteine**
- **Lp-PLA2**
- **Insulin (F)**



10 - 12 hrs fasting is essential

280815_10

TSH-LH-FSH-PRL



Profile Includes (4 Parameters)

- Thyroid Stimulating Hormone (TSH)
- Luteinising Hormone (LH)
- Follicle Stimulating Hormone (FSH)
- Prolactin (PRL)

The combined estimation of TSH - LH - FSH - PRL is essential to diagnose its abnormal levels which leads to infertility in females.

Quadruple markers (Second Trimester)



Profile Includes (06 Parameters)

- Alpha-Feto protein (AFP)
- Beta HCG
- Unconjugated Estriol (E3)
- Inhibin A
- Vitamin D Total
- Thyroid Stimulating Hormone (TSH)

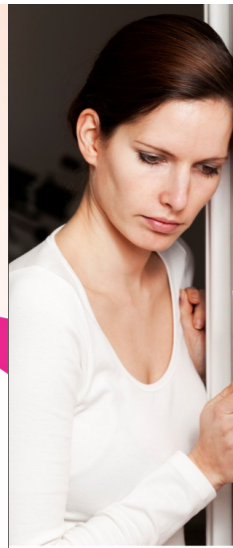


Tumour Panel (Female)

Profile Includes (6 Parameters)

- Alpha-Feto protein (AFP)
- Beta HCG
- CA 125
- CA 15-3
- CA 19-9
- Carcino Embryonic Antigen (CEA)

280815_14



Aarogyam

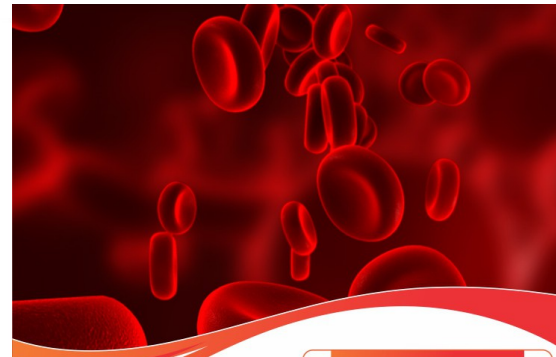
Think Wellness. Think Aarogyam

Infertility Profile - B

Profile Includes (21 Tests)

- › Luteinising Hormone (LH)
- › Follicle Stimulating Hormone (FSH)
- › Prolactin (PRL)
- › Total Triiodothyronine (T3)
- › Total Thyroxine (T4)
- › Thyroid Stimulating Hormone (TSH)
- › Anti-Mullerian Hormone (AMH)
- › Steroid Profile (14)
 - Aldosterone
 - Androstenedione
 - Cortisol
 - Corticosterone
 - Dehydrocorticosterone
 - Dehydroepiandrosterone (DHEA)
 - Estradiol
 - DHEA-Sulphate
 - 17-Hydroxyprogesterone
 - Progesterone
 - Testosterone
 - Vitamin D total
 - Vitamin D2
 - Vitamin D3

Fasting not essential

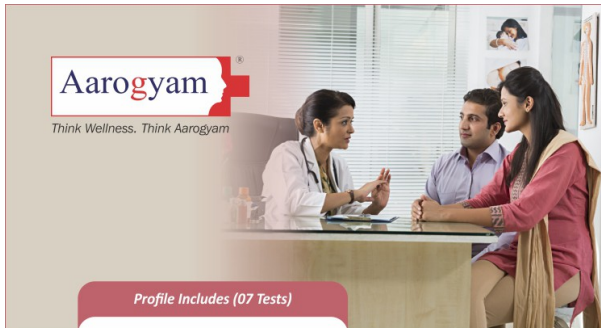


Iron Deficiency Profile

Profile Includes (3 Parameters)

- › Iron
- › Total Iron Binding Capacity (TIBC)
- › % Transferrin Saturation

280815_6



Aarogyam

Think Wellness. Think Aarogyam

Profile Includes (07 Tests)

- › Luteinising Hormone (LH)
- › Follicle Stimulating Hormone (FSH)
- › Prolactin (PRL)
- › Total Triiodothyronine (T3)
- › Total Thyroxine (T4)
- › Thyroid Stimulating Hormone (TSH)
- › Anti-Mullerian Hormone (AMH)

fasting not essential

Infertility Profile - M



Lipid Profile

A panel of tests which include total cholesterol, HDL, LDL, triglycerides, etc. for screening the risk for development of cardiovascular diseases.

Profile Includes (8 Parameters)

- Total Cholesterol
- HDL Cholesterol - Direct
- LDL Cholesterol - Direct
- Non - HDL Cholesterol
- LDL / HDL Ratio
- TC / HDL Cholesterol Ratio
- Triglycerides
- VLDL Cholesterol

10-12 Hours fasting required

280815_4



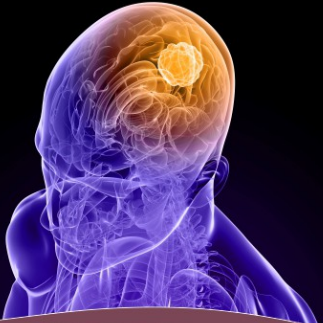
TORCH ALL TEN

Profile Includes (10 Parameters)

- Cytomegalovirus (CMV) - IgG
- Cytomegalovirus (CMV) - IgM
- Herpes Simplex Virus I (HSV) - IgG
- Herpes Simplex Virus I (HSV) - IgM
- Herpes Simplex Virus II (HSV) - IgG
- Herpes Simplex Virus II (HSV) - IgM
- Rubella - IgG
- Rubella - IgM
- Toxoplasma Gondii - IgG
- Toxoplasma Gondii - IgM

280815_9

Tumour Panel (Male)



Profile includes (7 Parameters)

- Alpha - Feto protein (AFP)
- Beta HCG
- CA 19-9
- Carcino Embryonic Antigen (CEA)
- Free PSA
- % Free PSA
- Prostate Specific Antigen (PSA)

Aarogyam
Think Wellness. Think Aarogyam

Presents

Diabetes Camp Profile



Profile Includes (83 Parameters)

- › Liver Profile (11)
- › Lipid Profile (8)
- › Kidney Profile (5)
- › Iron Deficiency Profile (3)
- › Thyroid Stimulating Hormone (TSH)
- › Blood Sugar Monitoring (2)
 - **HbA1C**
 - Average Blood Glucose
- › Complete Hemogram (28)
- › Homocysteine
- › Pancreas Profile (2)
- › Cardiac Risk Markers (5)
- › Vitamin D Total
- › Vitamin B12
- › Urinary Microalbumin (3)
- › Urinogram (10)
- › Fructosamine
- › Blood Ketone (D3HB)

**10 - 12 hrs fasting is essential | Blood and Urine samples needed*




Double-Marker First Trimester

Profile Includes (2 Parameters)

- Free Beta HCG
- Pregnancy Associated Plasma Protein A (PAPPA)

Aarogyam
Think Wellness. Think Aarogyam

Bone Profile - A



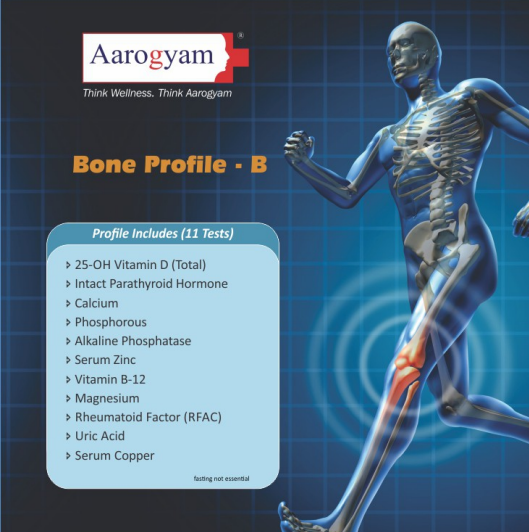
Profile Includes (08 Tests)

- › 25-OH Vitamin D (Total)
- › Intact Parathyroid Hormone
- › Calcium
- › Phosphorous
- › Alkaline Phosphatase
- › Serum Zinc
- › Vitamin B-12
- › Magnesium

fasting not essential

Aarogyam
Think Wellness. Think Aarogyam


Bone Profile - B



Profile Includes (11 Tests)

- › 25-OH Vitamin D (Total)
- › Intact Parathyroid Hormone
- › Calcium
- › Phosphorous
- › Alkaline Phosphatase
- › Serum Zinc
- › Vitamin B-12
- › Magnesium
- › Rheumatoid Factor (RFAC)
- › Uric Acid
- › Serum Copper

fasting not essential



"Vitamins are vital nutrients, and B complex aid for a Healthy body"

Vitamin B Complex Profile (8 Tests)

- » Vitamin B1 / Thiamine
- » Vitamin B2 / Riboflavin
- » Vitamin B3 / Niacin
- » Vitamin B5 / Pantothenic acid
- » Vitamin B6 / Pyridoxal 5-phosphate
- » Vitamin B7 / Biotin
- » Vitamin B9 / Folic acid
- » Vitamin B12 / Cobalamine

Profile Includes (43 Tests)

- 2-3-pyridine Carboxylic
- 2-phenyl-propionic
- 3-oh-3-me Glutaric
- 4-oh-benzoic Acid
- 4-oh-phenylacetic
- 5-oh-indole-3-acetic
- Alpha-oh-butyric Acid
- Alpha-keto-beta-methylvaleric
- Alpha-ketoisocaproic
- Alpha-ketoisovaleric
- Benzoic Acid
- Beta-oh-butyric
- Beta-oh-isovaleric
- Citric Acid
- Cis-aconitic
- Citramalic
- Ethylmalonic
- Formiminoglutamic Acid
- Glucaric Acid
- Glutaric Acid
- Glyceric Acid
- Glycolic Acid
- Hippuric
- 3-indoleacetic
- Isocitric Acid
- Iso-valeryl Glycine
- Kynurenic
- Malic
- Mandelic
- Methylmalonic
- Orotic
- Propionyl Glycine
- Picolinic
- Pyroglutamic
- Pyruvic Acid
- Sebacic Acid
- Suberic
- Succinic
- Tartaric Acid
- Tricarballic
- Creatinine - Urine
- Vanilmandelic
- Xanthurenic Acid



Aarogyam
Think Wellness. Think Aarogyam

Presents

Urinary Organic profile

Hypertension Profile - B

Profile Includes (76)

- **Thyroid Profile (3)**
Total Triiodothyronine [T3]
Total Thyroxine [T4]
Thyroid Stimulating Hormone [TSH]
- **Diabetic Screen (4)**
HbA1c
Average Blood Glucose
Fructosamine
Blood Ketone (B3HB)
- **Iron Deficiency Profile (3)**
Serum Iron
Total Iron Binding Capacity
% Transferrin Saturation
- **Liver Profile (11)**
Gamma Glutamyl Transferase
Alkaline Phosphatase
Bilirubin - Direct
Bilirubin - Total
Bilirubin - Indirect
Protein - Total
Serum Albumin
Serum Globulin
SGOT [AST]
SGPT [ALT]
Serum Albumin/Globulin Ratio
- **Lipid Profile (8)**
Total Cholesterol
HDL Cholesterol
Non - HDL Cholesterol
Triglycerides
LDL Cholesterol
VLDL Cholesterol
TC / HDL Cholesterol Ratio
LDL / HDL Ratio
- **Kidney Profile (5)**
Calcium
Uric Acid
Blood Urea Nitrogen
Serum Creatinine
BUN/ Serum Creatinine Ratio
- **Complete Hemogram (28)**
- **Cortisol**
- **Aldosterone**
- **Direct Renin**
- **Serum Electrolytes (3)**
- **Microalbuminuria (3)**
- **Cardiac Risk Markers (5)**

10 -12 hrs fasting is essential



Hypertension Profile - A

Profile Includes (69)

- **Thyroid Profile (3)**
Total Triiodothyronine [T3]
Total Thyroxine [T4]
Thyroid Stimulating Hormone [TSH]
- **Diabetic Screen (2)**
HbA1c
Average Blood Glucose
- **Iron Deficiency Profile (3)**
Serum Iron
Total Iron Binding Capacity
% Transferrin Saturation
- **Liver Profile (11)**
Gamma Glutamyl Transferase
Alkaline Phosphatase
Bilirubin - Direct
Bilirubin - Total
Bilirubin - Indirect
Protein - Total
Serum Albumin
Serum Globulin
SGOT [AST]
SGPT [ALT]
Serum Albumin/Globulin Ratio
- **Lipid Profile (8)**
Total Cholesterol
HDL Cholesterol
Non - HDL Cholesterol
Triglycerides
LDL Cholesterol
VLDL Cholesterol
TC / HDL Cholesterol Ratio
LDL / HDL Ratio
- **Kidney Profile (5)**
Calcium
Uric Acid
Blood Urea Nitrogen
Serum Creatinine
BUN/ Serum Creatinine Ratio
- **Complete Hemogram (28)**
- **Cortisol**
- **Aldosterone**
- **Direct Renin**
- **Serum Electrolytes (3)**
- **Microalbuminuria (3)**

10 -12 hrs fasting is essential



Thyrocare Aarogyam Profile List

Sr.No	Short Name	Profile Name	Sample Type	EDTA
1	AA1.2	AAROGYAM 1.2	SEBL	H6 HBA
2	AA1.3	AAROGYAM 1.3	SEBL	H6 HBA
3	AA1.7	AAROGYAM 1.7	SEBL	BEAP H6 HBA
4	AA1.4	AAROGYAM 1.4	SEBL	H6 HBA
5	AA1.6	AAROGYAM 1.6	SEBL	H6 HBA
6	AA1.5	AAROGYAM 1.5	SEBL	BEAP H6 HBA
7	AA15.2	AAROGYAM 15.2	SEBL	H6 HBA
8	AA15.3	AAROGYAM 15.3	SEBL	BEAP H6 HBA
9	WG1	WELLNESS G1	SEBL	H6 HBA
10	WG2	WELLNESS G2	SEBL	H6 HBA
11	WG3	WELLNESS G3	SEBL	BEAP H6 HBA
12	WG4	WELLNESS G4	SEBL	BEAP H6 HBA
13	AA CP	AAROGYAM CAMP PROFILE	SEBL	H6 HBA
14	AA1.8	AAROGYAM 1.8	SEBL	H6 HBA
15	PP M	PREGNANCY PROFILE - M	SEBL	H6 HBA
16	PP A	PREGNANCY PROFILE - A	SEBL	H6 HBA
17	PP B	PREGNANCY PROFILE - B	SEBL	BEAP H6 HBA
18	PP CFT	PREGNANCY PROFILE - C (FIRST TRIMESTER)	SEBL	BEAP H6 HBA
19	PP CST	PREGNANCY PROFILE - C (SECOND TRIMESTER)	SEBL	BEAP H6 HBA
20	MP M	METABOLIC PROFILE - M	SEBL	BEAP H6 HBA
21	MP A	METABOLIC PROFILE - A	SEBL	BEAP H6 HBA
22	MP B	METABOLIC PROFILE - B	SEBL	E22 H6 HBA
23	MP C	METABOLIC PROFILE - C	SEBL	E22 H6 HBA
24	AA15.1	AAROGYAM 15.1	SERUM	-
25	DP C	DIABETIC PROFILE - C	USB	