

3 & 4 Wire Self Compensating Ultrasonic Transmitters Standard Mtg.



730 The Kingsway Peterborough, Ont. K9J6W6 Canada
 Tel: (705) 740 – 2010 Web: www.abmsensor.com
 Fax: (705) 740 – 2563 E-mail: info@abmsensor.com

FEATURES

- Simple push-button calibration (Accurate)
- Output 4-20 mA / 20-4 mA (Isolated on 4 Wire Model's only)
- Built-in temperature compensation
- Optional RS232 or RS485 Communications with calibration, diagnostics and data logging software
- PLC compatible (Modbus RTU)
- Three or Four Wire Operation
- Self cleaning operation of sensor face



APPLICATIONS

- Food and Beverages
- Water / Wastewater
- Chemicals, Oils
- Solids (Models 25U, 45U Below)
- Solids Range Approx. 1/2 of liquid

ENVIRONMENTAL

- Temperature : Std. - 40 to 140°F (-40 to 60°C)
- High - 40 to 266°F (-40 to 130°C) Teflon Sensor
- Pressure : Max. 2 bars
- Approvals : Entela Certified File #8294
- CAN/CSA C22.2 No. 1010.1-M92 +A2,
- IEC 61010-1:90 + A1:92 +A2:95
- UL 61010A-1(2002)
- ABMXXX Series-25U Approvals Pending

Installation Category : Class II

OPERATIONAL

- Accuracy : +/-0.1% of max. range (in lab using 4-20 mA current output) +/-0.25% of max. range (typically in field)
- Response Time : Standard Unit 2 - 3 echo's / sec.
- : Std. with less damping 6 echo's / sec.
- : Fast Protocol **I.R. 10 - 30 echo's / sec.
- ** : IF Required
- Beam Angle : 6 -12 degrees at -3dB
- Loss of Echo : Hold 1 min., 22mA or 2 mA output
- Temp. Comp. : In transducer
- Calibration : Push-button or programmable via optional communications port.
- Diagnostics : (Echo Profile) via communications port

MECHANICAL

- Conduit Entry : 1/2" NPT Hole (PVC conduit only)
- Enclosure : PVC - 94V0
- Ingress Protection : NEMA 4X (IP65)

CATALOGUE # - On the Web Site return to Home Page & Refer to Catalogue Number Structure for Ordering information. In Product Documentation refer to Page 3.

TECHNICAL SPECIFICATIONS

Range Code	Operating Range In Liquids	Resolution	Mounting
025	1.4 - 90 ft. 0.40 - 27.4m	0.41" 10 mm	6.0"/1.0" NPT
045	1.0 - 60 ft. 0.30 - 18.2 m	0.27" 6.8 mm	3.0" NPT
052	0.9 - 50 ft. 0.27 - 15.2 m	0.23" 5.7 mm	3.0"/2.0" NPT
070	0.8 - 30 ft. 0.24 - 9.1 m	0.13" 3.4 mm	3.0"/2.0" NPT
080	0.7 - 20 ft. 0.21 - 6.1 m	0.088" 2.2 mm	3.0"/ 2.0" NPT
081	0.6 - 16 ft. 0.18 - 4.9 m	0.07" 1.8 mm	3.0"/1.5" NPT
148	0.4 - 9 ft. 0.12 - 2.7 m	0.04" 0.98 mm	3.0"/1.0" NPT

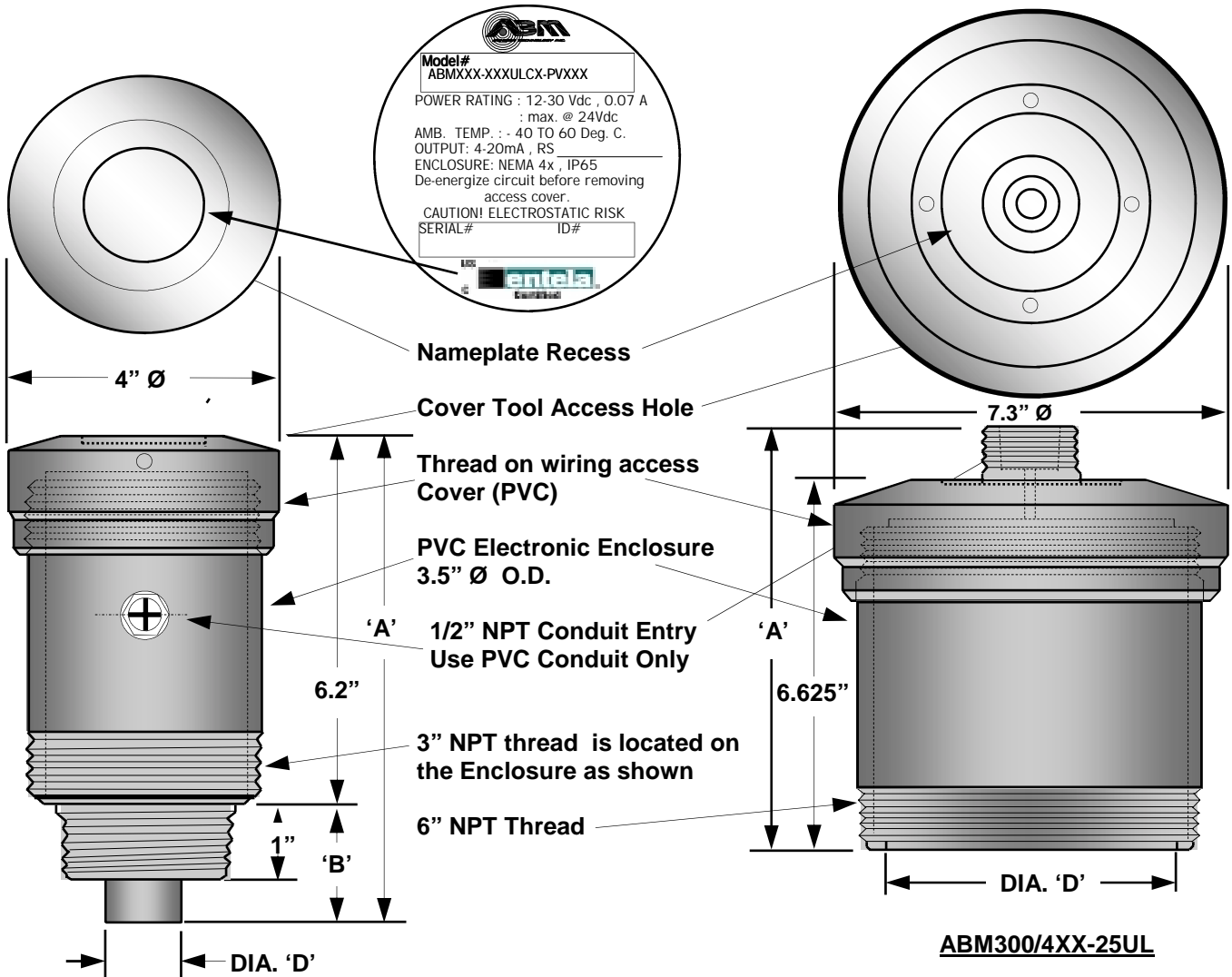
ELECTRICAL SPECIFICATIONS

Power	115 VAC 60 Hz or 230 VAC 50 Hz
ABM400 AC	(+/-20%), 1.7 VA
ABM300 DC	12 to 30 VDC, 0.07 A max @ 24 Vdc R load = (Vs - 6) / 24 mA
Output	4-20 mA Output 6.1 uA resolution
	750 Ohms (Isolated on 4 Wire only)
	Optional RS232 or RS485 communications port.

3 & 4 Wire Ultrasonic Transmitters Outline Dimensional Dtl.



730 The Kingsway Peterborough, Ont. K9J6W6 Canada
 Tel: (705) 740 – 2010 Web: www.abmsensor.com
 Fax: (705) 740 – 2563 E-mail: info@abmsensor.com



Level Sensor PVC Housing						
Model #	Operating Range	Operating Frequency	Mounting Thread	Dimension 'A'	Dimension 'B'	Dimension 'D'
ABM300/4XX- 025UL	90'	25 KHz	6"/ 1 " NPT	7.625"	N/A	5.75"
ABM300/4XX- 045UL	60'	45 KHz	3 " NPT	8.9"	3.0"	3.0"
ABM300/4XX- 052UL	50'	52 KHz	3"/ 2 " NPT	9.3"	3.05"	2.2"
ABM300/4XX- 070UL	30'	70 KHz	3"/ 2 " NPT	8.5"	2.25"	1.8"
ABM300/4XX- 080UL	20'	80 KHz	3"/ 2 " NPT	8.5"	2.25"	1.8"
ABM300/4XX- 081UL	16'	81 KHz	3"/ 1.5" NPT	8.4"	2.1"	1.5"
ABM300/4XX-148UL	9'	148 KHz	1 " NPT	8.25"	2.0"	1.1"

3 & 4 Wire Level Transmitter Sensor Outline Detail