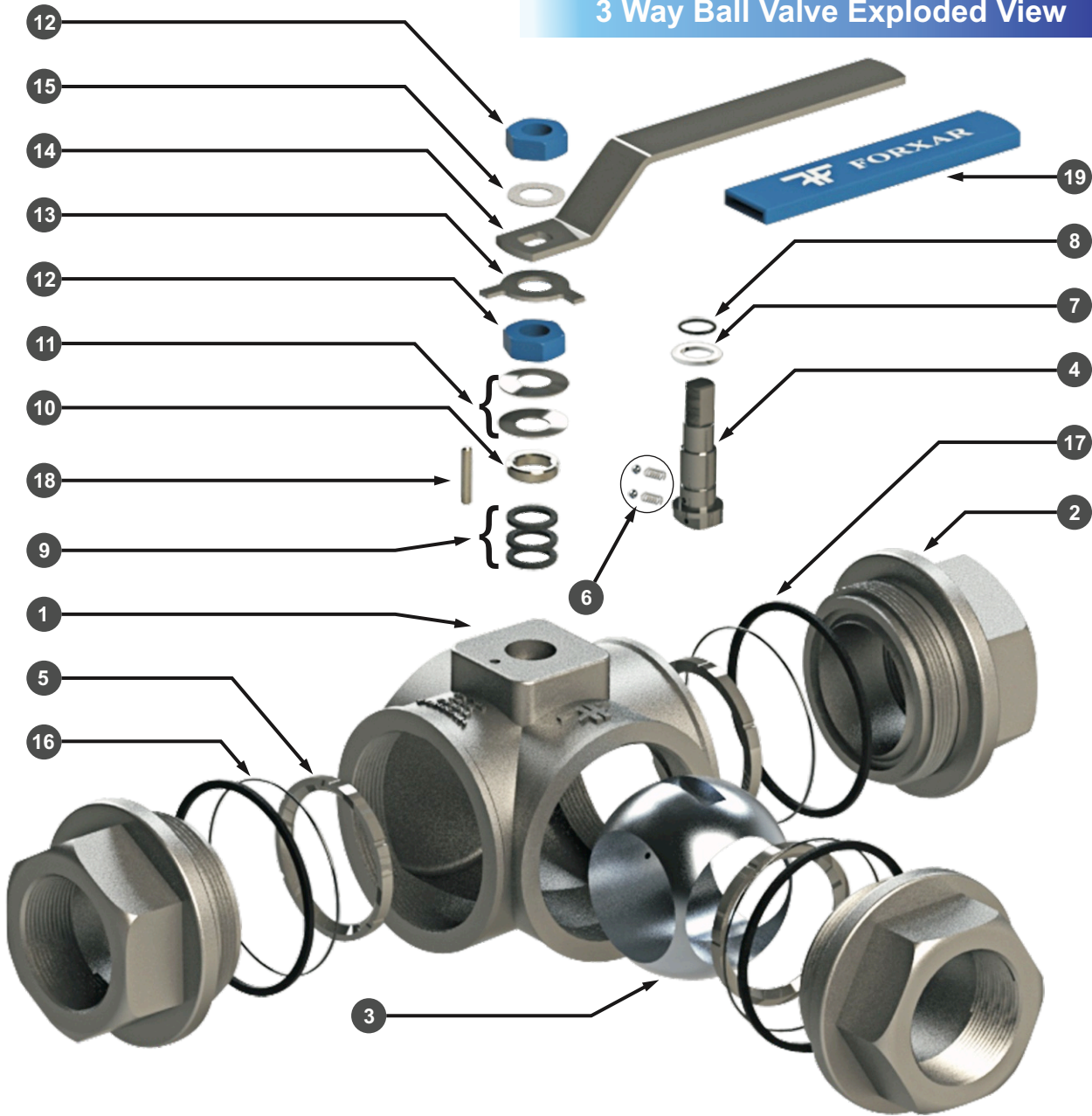


3 Way Ball Valve Exploded View



Component Name & Quantity

No.	Component Name	Qty.
1	Body	1
2	Adaptor	3
3	Ball	1
4	Stem	1
5	Seat Ring	3
6	Anti-Static Device	2
7	Stem Bottom Bush	1
8	Stem "O" Ring	1
9	Gland Packing	3
10	Gland Bush	1

No.	Component Name	Qty.
11	Spring Washer	2
12	Gland Nut	2
13	Lever Stopper	1
14	Lever	1
15	Indicator or Washer" Ring	1
16	End Piece "O" Ring	3
17	Gasket	3
18	Stopper Pin	1
19	Lever Grip	1
20		

3 Way Ball Valve

Standard Features

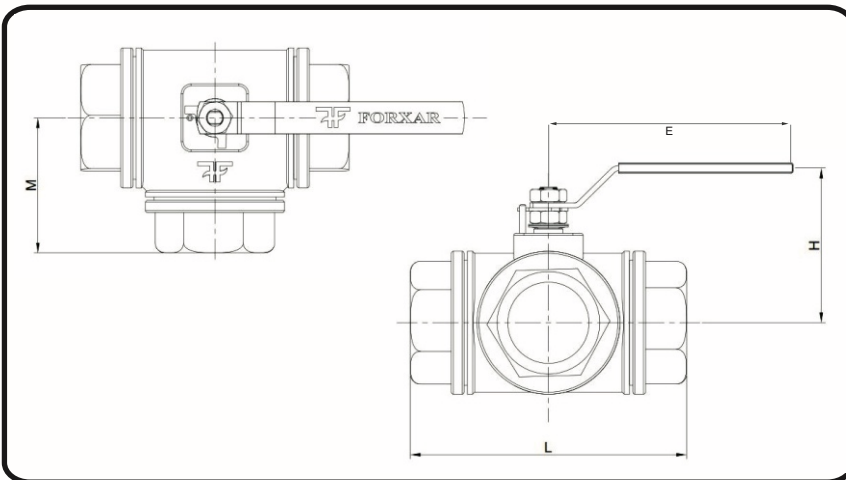
- Available in "T" or "L" Port configurations
- Full Port
- Actuator Mounting Pad
- Blow-out-proof stem
- Investment cast

Operating / Test Conditions:

- Operating Temperature Range -200 to 4500 F
- End Type : Threaded to ANSI B2.1
- 100% air tested under water at 80 PSI
- Maximum Working Pressure :
1000 PSI CWP (1/4" - 1")
800 PSI CWP (1 1/4" - 2")

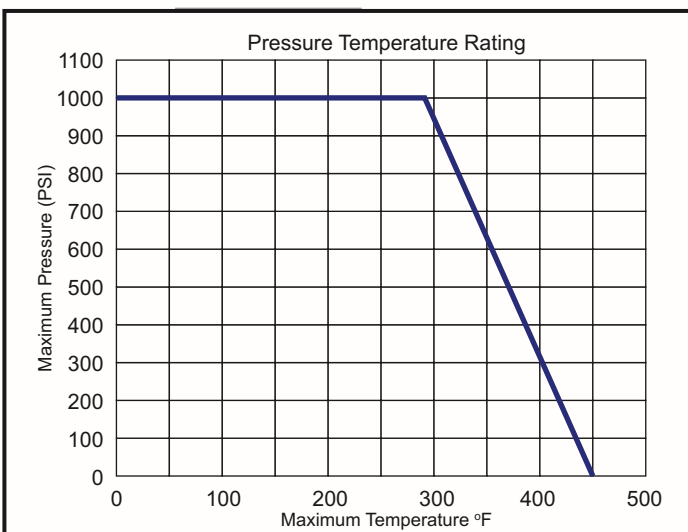
Benefits

- Reduces number of valves required in piping system
- Full port construction improves flow characteristics
- Standard mounting pad for ease of automation
- Live-loaded stem packing improves cycle life
- Balanced 4 seat construction provides for positive shut off



Dimensions

Size	L	H	E
1/4	2.98	2.56	5.20
3/8	2.98	2.56	5.20
1/2	2.98	2.56	5.20
3/4	3.41	2.82	5.20
1	4.06	3.71	7.09
1-1/4	4.65	3.94	7.09
1-1/2	4.95	4.56	8.86
2	5.87	4.92	8.86



Technical Information

Size	CV T Port	CV L Port	Torque in Lbs	Weight Lbs
1/4	5	3	46	1.65
3/8	6	3	46	1.65
1/2	8	4	46	1.65
3/4	13	7	91	2.65
1	22	12	107	3.97
1-1/4	35	20	237	5.51
1-1/2	59	34	305	7.94
2	88	51	643	12.79

Ordering Information of Ball Valves

As Per Our Design

1) Type of Valves	
Types	Nomen.
1 Piece Ball Valve	1BV
2 Piece Ball Valve	2BV
3 Piece Ball Valve	3BV
Flush Bottom Ball Valve	FBV
Jacketed Type Ball Valve	JBV
Three Way Ball Valve	3WBV
2 Piece Trunnion Mounted Ball Valve	2TBV
3 Piece Trunnion Mounted Ball Valve	3TBV

2) Materials	
Type Of Materials	Nomen.
S S310	S1
Ss304 / ASTM A182 Gr. F304	S4
SS304 L	S4L
SS316	S6
SS316L	S6L
SS317	S7
SS321	S21
SS446	S46
Monal 400	M4
Incoloy 625	I6
Incoloy 825	I8
Carbon Steel	CS
A105	A1
Alloy 20	A20
ASTM A182 F51 (Duplex F51)	F51
ASTM A182 F60 (Duplex F60)	F60
ASTM A182 F53 (Super Duplex F53)	F53
ASTM A312 TP 304L	P4L
ASTM A182 F11	F11
ASTM A182 GR F5	F5
ASTM A312 TP 304	TP4
Hastelloy C276	HC2
A350 Gr. LF1/ LF2/ LF3	LF2
SS410	S41
ASTM A240 TP 316L	P6L
Inconel-600	I60
ASTM A234 Gr. WPB	WPB
Mild Steel	MS
Nickel Alloy	NA
Galvanized	GLV

3) Sizes	
Size	Nomen.
1/8"	6
1/4"	8
3/8"	10
1/2"	15
3/4"	20
1"	25
1 1/4"	32
1 1/2"	40
2"	50
2 1/2"	65
3"	80
4"	100
5"	125
6"	150
8"	200
10"	250
12"	300
14"	350
16"	400
18"	450
20"	500
22"	550
24"	600
26"	650
28"	700
30"	750
32"	800
36"	900

4) Type Of Bore	
Type	Nomen.
Full Bore	FB
Reduced Bore	RB

5) Type of End Connections.	
Type	Nomen.
Flange End	FL
Butt Weld End	BW
Socket Weld End	SW
Tounge & Groove	TG
Ring Type Joint	RTJ
NPT Threaded	NT
BSPT Threaded	BT
SW NPT	SN

6) Type Of Class	
Types	Nomen.
Class 150	#150
Class 300	#300
Class 400	#400
Class 600	#600
Class 900	#900
Class 1500	#1500
Class 2500	#2500
Class 4500	#4500
Sch 10	S10
Sch 20	S20
Sch 40	S40
Sch 80	S80
Sch 160	S160
Sch XXS	SXXS
Table F	F
Table E	E
Table D	D

7) Special Requirement	
Types	Nomen.
IBR	IBR
Fire Safe	FS

8) Operating System	
Types	Nomen.
Lever Operated	1 / L
Gear Unit	2 / G
Pneumatic	3 / P
Electric	4 / E

Ex. 1 PIECE BALL VALVE, 100NB, FLANGE END
 ASTM 182 A SS 316 FULL BORE #300, WITH IBR = 1BV-S6-100FB-FL-#300-IBR