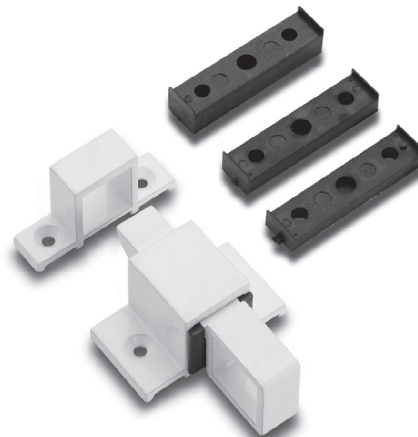


# Cricchetto vasistas

**LAVAAAL**  
International

Chiusura ad applicazione esterna in alluminio per finestre vasistas. Gli spessori di nylon in dotazione lo rendono universale per qualsiasi sistema.



## DOTAZIONI

2 viti autofilettanti TC 3,5 x 9,5  
2 viti autofilettanti TC 3,5 x 19  
4 spessori in nylon (n° 2 da mm 2,  
n° 1 da mm 1, n° 1 da mm 3)

## Catch for bottom-hung window

Externally positionable lock in aluminium for bottom-hung windows. The spacers in nylon in the equipment kit render it universal for any type of system.

## SUPPLIED PARTS

2 self-threading screws TC 3,5 x 9,5  
2 self-threading screws TC 3,5 x 19  
4 nylon spacers (n° 2 of mm 2, n° 1 of mm 1,  
n° 1 of mm 3)

art. **00030.00.00**



- scatola da 50 pezzi  
- box with 50 units

## Adattabilità ai sistemi Adaptability to the systems

### > GULF EXTRUSION

45 mm series  
Tilt & Turn 600 series (thermal break)

### > AL JABER EXTRUSION

45 mm series

### > EMIRATES EXTRUSION

PARAGON hinged series  
EMERALD hinged series (thermal break)

### > AL HAMAD EXTRUSION

ECO 500 hinged series (thermal break)

### > ARABIAN EXTRUSION

AREXAL 55 series (thermal break)

### > ALUPCO

AluPCo 45 series  
AluPCo 52 series  
AluPCo Therm 56 D (thermal break)  
AluPCo Therm 60 D (thermal break)  
AluPCo Therm 64 D (thermal break)

### > BALEXCO

BL 45 series  
BL 50 TT series (thermal break)

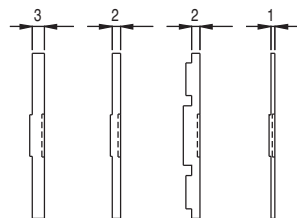
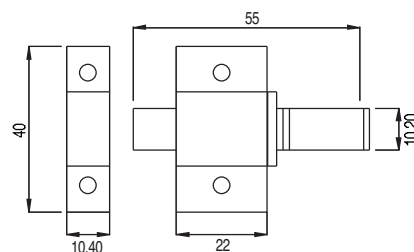
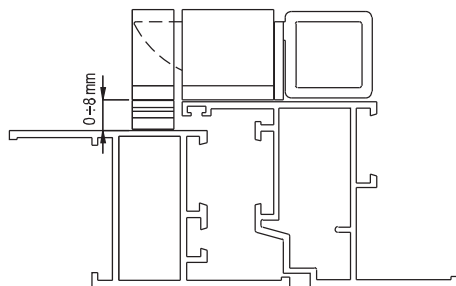
### > AKFA

0701 series (thermal break)

### > PENTA

P 45 series

### > EURO GROOVE



# Braccio vasistas "Rapido"

Braccio d'arresto per aperture a vasistas sganciabile. Realizzato in acciaio inox, scivoli e blocchetti di arresto in zama zincata nera, viteria in acciaio inox. Portata coppia Kg 40.

## DOTAZIONI

2 fine corsa in zama  
2 grani 5MAX5  
4 grani 5MAX10  
2 mollette di frizione in nylon



**LAVAAAL**  
International

## "Rapido" bottom-hung window arm

Multi-position bottom-hung window stop arm. Made in stainless steel, sliders and friction springs in black zinc-plated zamak, screws in stainless steel. Capacity couple Kg 40.

## SUPPLIED PARTS

2 arm limiters in zamak  
2 grub screws 5MAX5  
4 grub screws 5MAX10  
2 friction springs in nylon

art. **04100.00.00**



- scatola da 40 coppie  
- box with 40 pairs

## Adattabilità ai sistemi Adaptability to the systems

### > GULF EXTRUSION

45 mm series  
Tilt & Turn 600 series (thermal break)

### > AL JABER EXTRUSION

45 mm series

### > EMIRATES EXTRUSION

PARAGON hinged series  
EMERALD hinged series (thermal break)

### > AL HAMAD EXTRUSION

ECO 500 hinged series (thermal break)

### > ARABIAN EXTRUSION

AREXAL 55 series (thermal break)

### > ALUPCO

AluPcO 45 series  
AluPcO 52 series  
AluPcO Therm 56 D (thermal break)  
AluPcO Therm 60 D (thermal break)  
AluPcO Therm 64 D (thermal break)

### > BALEXCO

BL 45 series  
BL 50 TT series (thermal break)

### > AKFA

0701 series (thermal break)

### > PENTA

P 45 series

### > EURO GROOVE

