

● Construct Steel



Steel Structures



steel tower



Railroad Rail

◎ Introduced use

- ▶ H-Shape Steel Beam (Main products : KSD3502, JISG3192, ASTM A6, DIN1025, BS4

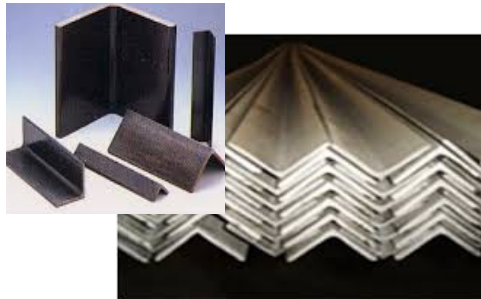


With cross-sectional shape of H, this is a typical section widely used for frame of large Structures or engineering work.

The product characteristically boasts excellent strength as it registers uniform inner quality .

Compared to the welded H-sections made by welding hot rolled or thick steel Plates

- ▶ Equal Angle Beam (Main products : KSD3502, JISG3192, EN 10056-1)



With cross-sectional shape of \sphericalangle , this product is widely used as reinforcing materials of steel structures hull reinforcement material, and truss.

- ▶ □ -Channel (Main products: KSD3502, JISG3192, ASTM A6, DIN 1026-1)



With cross-sectional shape of □, this product is industrial machine frame or brace/truss of steel frame. Generally, it is diversely applied to the joints of steel frame structures composed of H-section or I-beam.

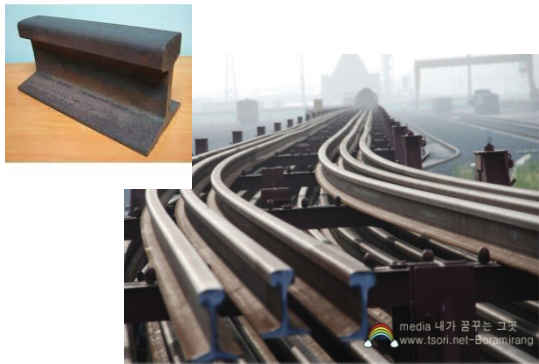
- ▶ I-Shape Steel Beam (Main products : KSD3502, JISG3192, KSE4002)



With cross-sectional shape of I, the product is similar to H-section but characteristically has narrow width and thick web.

It is mostly used for travel rail, guide, rail, etc. on a hoisting mechanism where cargo moves.

- ▶ Railway Rail ((Main products : 50KGN, UIC60, 50NHH340, 50NHH370, 60KRH340, 60KRH370)

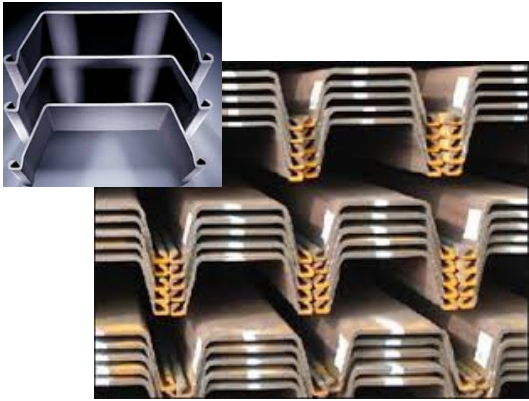


With cross-sectional shape of I, the product has its bottom flange wider than top flange.

used for rails where railway vehicles move, it characteristically has greater strength than other beams and boasts excellent wear resistance.

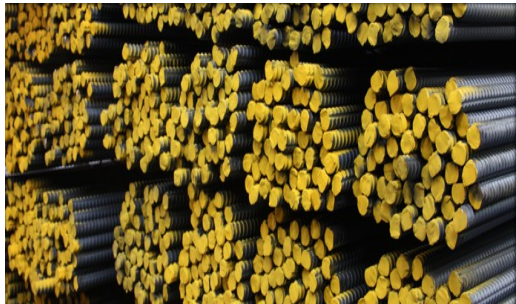
it is used for high-speed railway rails and magnetic levitation train rails.

▶ **Steel Sheet pile (Main products : SY300, SY400)**



With cross-sectional shape of U, the product is used for piles for cofferdam, retaining wall, or foundation material of structures. It has various types of connection such as key and straight line.

▶ **Rock Bolt (Main products : KS D3504)**



Rock bolt is mainly used for building constructions, tunnel works, etc.

▶ **Round Bar (Main products : KS D3503, JIS G3101).**



Round Bar is used for stiffeners of public works or tunnel construction.