



KiTEC



MULTI FLOOR TRAP

Model: MFT-63
(With 63 mm Water Seal)



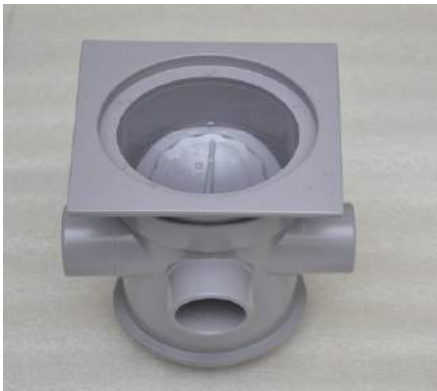
KiTEC[®]

Rewriting the Standards

Rewriting the Standards

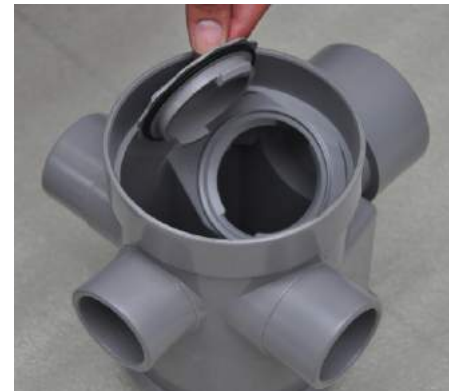
As is our philosophy to offer technically correct products to the customer, KiTEC has developed a Floor Trap meeting all the requirements of international standards. Based on our research and interaction with experts it was realized that apart from connecting the waste water to drain line the trap also acts as a safety measure avoiding harmful gases to enter the room.

The proposed design was based on the principle that the trap shall have a liquid seal of not less than 50 mm and not more than 100 mm. The water seal that forms the trap barrier is the maximum vertical depth of liquid that a trap will retain. It is measured between the crown weir and the top of the dip of the trap. A water seal of not less than 50 mm and not more than 100 mm was found to be the optimum depth to provide the necessary protection against sewer gas and still provide the self-scouring effect needed to keep the trap from fouling. A trap with less than 50 mm of seal depth offers less resistance to self-siphonage and more readily loses its seal by evaporation. Obviously the greater the seal depth, the opposite is proportionately true. The product is suitable for use on all types of drainage installations including "Single Stack" and "One-Pipe Fully Vented Systems". The salient features are as under;

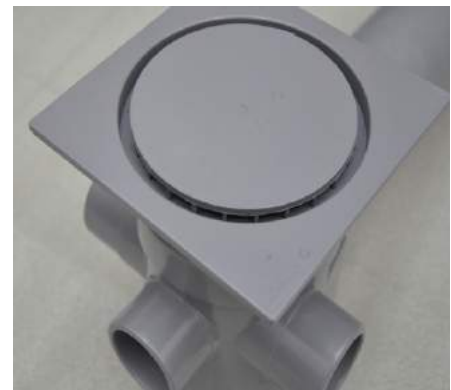


Trap with flap and air-tight cleaning eye is integral molded part of the body

Cleaning eye for ease of maintenance - easy to open and fit.



Side flow circular grating with solid top. Waste water in trap seal hidden from view and has elegant look.

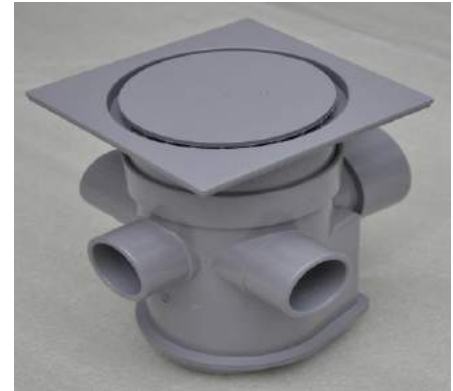


Rewriting the Standards



The grating is snap fitted with grating base, thus easy to detach and to clean. Optional additional grating in SS over uPVC available.

Square base of grating with proprietary joint to trap, suitable for easy installation on tiled floors, with adjustable height.



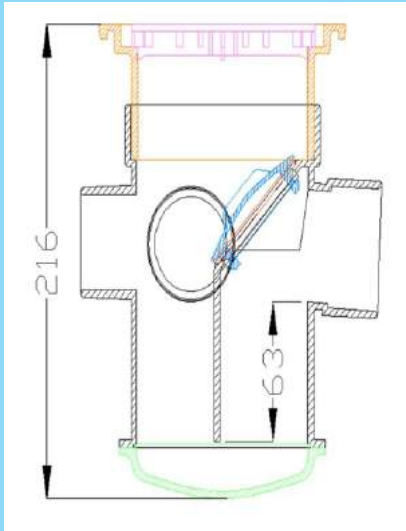
Three optional dual inlet connections, suitable for 40 mm or 50 mm OD piping.



Full bore optional dual outlet, for 63 mm or 75 mm outlet. Outlet not blocked to create water seal, unlike other models available in the market.



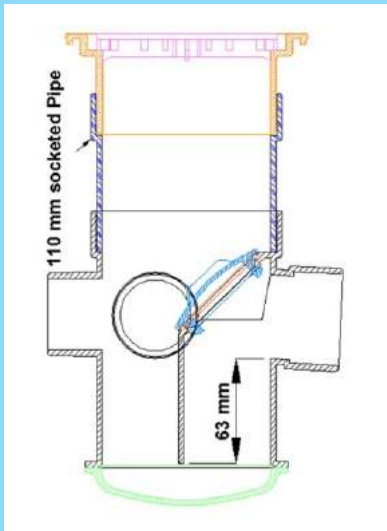
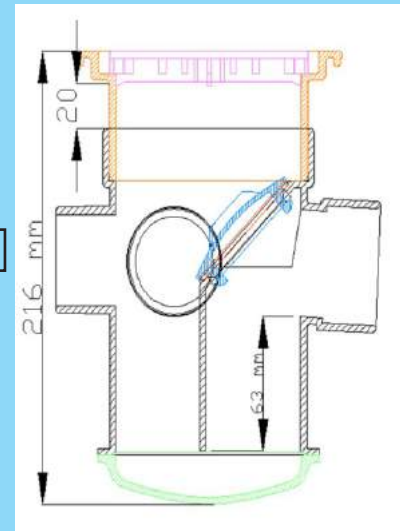
Rewriting the Standards



Fool proof sealing arrangement for gases as compared to other floor traps in the market.

Maximum Water Seal	
BRAND	Water Seal (mm)
KiTEC	63
Manufacturer A (Deep Seal)	48
Manufacturer B (Deep Seal)	41
Manufacturer C	15

The height of the Trap can be reduced upto 20 mm (if required for sunken floor) by cutting the grating tail piece.



Can be used for suspended installation using 110 mm uPVC socketed extension pipe.



KiTEC Industries (India) Private Limited

CIN:U74999MH1994PTC076323

C-18/11, Jeevan Bima Nagar, Borivali (W), Mumbai 400 103

Tel. No.: 022 - 28951144 Fax :022 - 28942549

E - mail: sales@kitecindia.in

Visit Us at : www.kitecindia.in

KiTEC is registered trademark owned by KiTEC Industries (India) Pvt. Ltd.

V:Mar2016/01

To the best of our belief, the technical data set out in this publication is accurate. However it is purely for guidance purpose.