



# MS70 Handheld LiDAR Scanner

**To be the Best**  
GNSS Solution Provider

CE FCC IP67

## MS70 Handheld LiDAR Scanner

The MS70 Handheld LiDAR Scanner is a groundbreaking tool that revolutionizes 3D data collection. This lightweight device combines a 20° tilt mechanism, dual wide-angle cameras, and an integrated RTK module to accurately capture unprecedented detail and vibrant color scans. It integrates advanced point cloud algorithms, enabling one-person operation to quickly obtain comprehensive color point cloud easily obtain true 3D information and complete spatial mapping.



Lightweight and Portable



Ultimate Efficiency



Realistic colorization



Enhanced Accuracy



User-Friendly



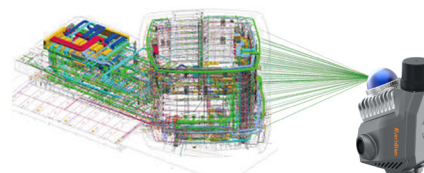
All in one



## Features

### High Precision and Accuracy

The point cloud thickness is within 1cm, and relative accuracy can reach 1cm. The MS70 utilizes advanced RTK and SLAM technologies to deliver stable, accurate, and reliable positioning data. Deep integration of LiDAR and imaging technologies, combined with advanced point cloud algorithm, ensures accurate and realistic 3D reconstructions.



### One-Click Operation

The built-in RTK module allows for **one-click operation**, simplifying the scanning process and reducing setup time, no external antennas or 4G cards required. Meridian Lidar Studio for one-click point cloud generation and export.



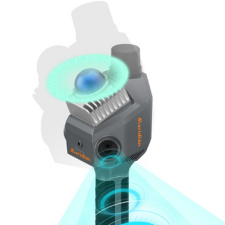
### Real-Time Colorization

Industry-leading color point cloud effects with real-time feedback. The standard software provides **real-time feedback** on data collection status and a **live preview of color point clouds**, ensuring no data is missed during scanning.



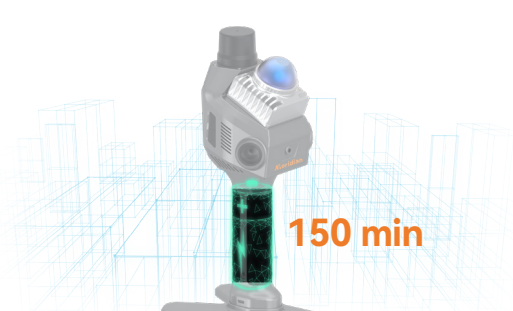
### Compact design, wider coverage

With a weight of only 1.0 kg, it is easy to carry and operate. Two 16 MP wide-angle fish-eye lenses and 20° tilt mechanism allows the scanner to capture full field-of-view coverage and highly detailed imagery, MS70 captures large amounts of data quickly, saving time and maintaining accuracy.



### Extended Battery Life and Fast Charging

3150 mAh batteries provide up to 150 minutes of continuous scanning each, ensuring extended operation in the field. Type-C PD-30W charging ensures an average charging time of just 1.5 hours, minimizing downtime.

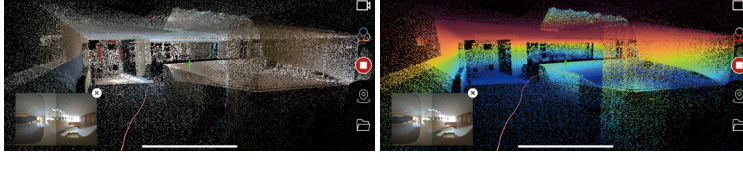


## Software

Supports real-time calculation and post-processing, adding color to point clouds in real time. The color point cloud effect is industry-leading, delivering vibrant and realistic 3D reconstructions.

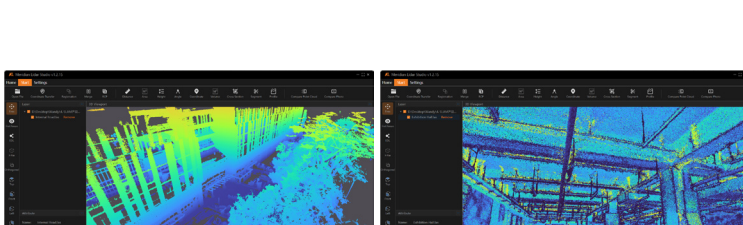
### Meridian Lidar Go: Empowering Mobile 3D Scanning

Become a 3D scanning expert in minutes. Meridian Lidar Go lets you control the MS70 Slam Scanner with ease. Capture every detail in real-time color point clouds. Start scanning instantly with plug-and-play simplicity.



### Meridian Lidar Studio: Advanced Desktop Processing

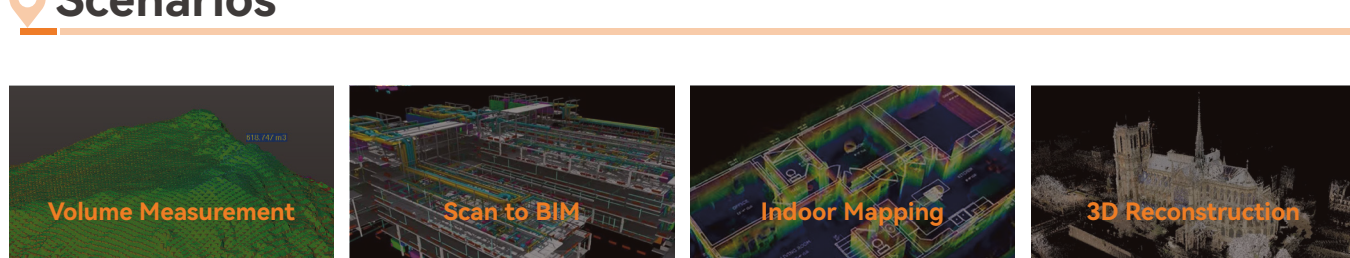
Generate high-quality point data with one click. Meridian Lidar Studio processes your scans efficiently. Intuitive measurement and analysis with image and point cloud overlays. Transform your data into real-life reconstructions effortlessly.



## Inside the Box

- MS70+1 Handle Battery
- Type-C Cable
- TF Card 256GB
- Magdafe Holder
- Type-C Charger
- Polishing Cloth
- GCP Benchmark

## Scenarios



### Meridian MS70 SLAM Specification

System	RTK Performance	0.8 cm + 1 ppm (H) 1.5 cm + 1 ppm (V)
	Processing	Real-time processing Post processing
	Support satellite	7 satellites system, 21 channels
	Range Noise	±1 cm
	Precision Indoor	±1 cm
Software	Point Cloud Thickness	≤1cm
	Accuracy	Absolute Accuracy ≤ 5cm; Relative Accuracy ≤ 1cm
	Mobile App	Supports preview of color point clouds, iOS and Android compatibility
Environment	Processing Software	Supports spatially correlated view of point clouds and panoramic photos
	Robustness	Designed for indoor and outdoor use
	Temperature	Operating: -20 ~ +55°C Storage: -20 ~ +60°C
	IP Rating	IP54
LiDAR & Imaging	Camera	16 MP * 2
	Camera FOV	360 * 270°
	Laser Class	Class 1/905nm
	LiDAR FOV	Horizontal 360° Vertical -7°~52°
	Point Measurement Rate	200,000 pts/sec
	Frequency	10 hz
Physical & Electrical	Range	0.1 ~ 40 m @ 10% 0.1 ~ 70 m @ 80%
	Weight	1079g(with battery)
	Size (mm)	110.5 * 140 * 313.3mm(with Battery) 110.5 * 114 * 143.1mm(mainframe)
	Battery	3150 mAh Quick-release grip battery (Max. 150 mins battery life for each)
	Input	14.4 v
Data Transfer	Charging	Type-C, PD-30 W (Average 1.5 hr charging time )
	Format	.las, .pcd, .ply
	Detachable Storage	TF Card, 256GB, max 512GB extendable
Operation	Data Transfer	Wireless and USB 3.0
		Support MagSafe stand for mobile devices. Support surveying pole connection

Tel: 95550 44154  
Website: www.triyass.in