



Hydrating and Lifting



Moisturizing and Brightening



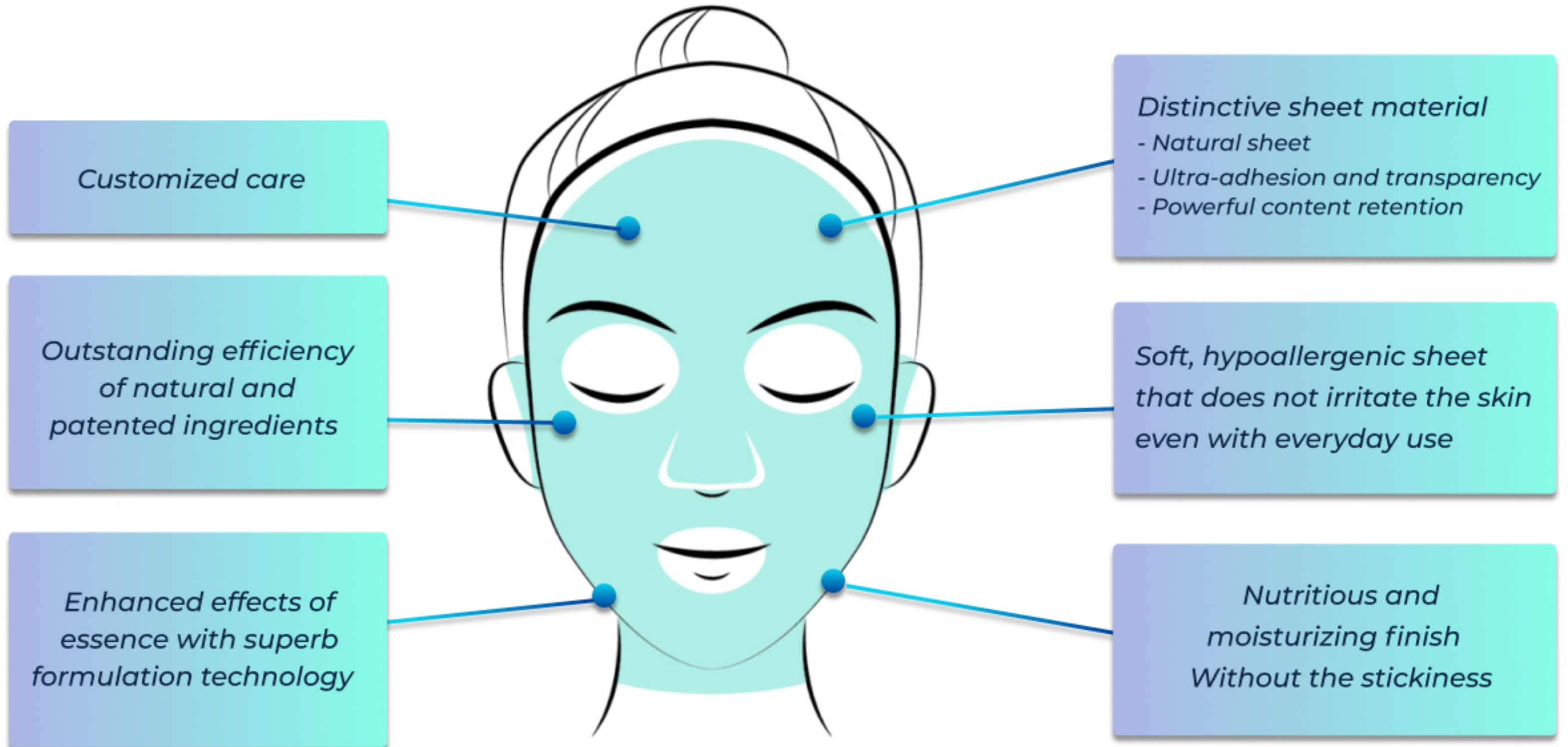
Cooling and Soothing

Lightly put a layer on tired skin! Easy to use and get fast results!



Korea Dermatology Research Institute proved: No Skin irritation

Simple and easy to use at any time



Product Features

1. Safety of natural ingredient masks

Lyocell fiber blend extracted from eucalyptus tree (Portugal) and beech tree (Austria)

2. Thin yet resistant and durable, elastic sheet

Ordinary lightweight felt sheets are flimsy and hard to unfold

3. The Unique curvy-shaped surface finish retains a generous amount of contents to deliver to the skin

Strong essence retention

4. Ultra adhesion and transparency

Feels like my own skin

5. Excellent permeability thanks to the microscopic holes

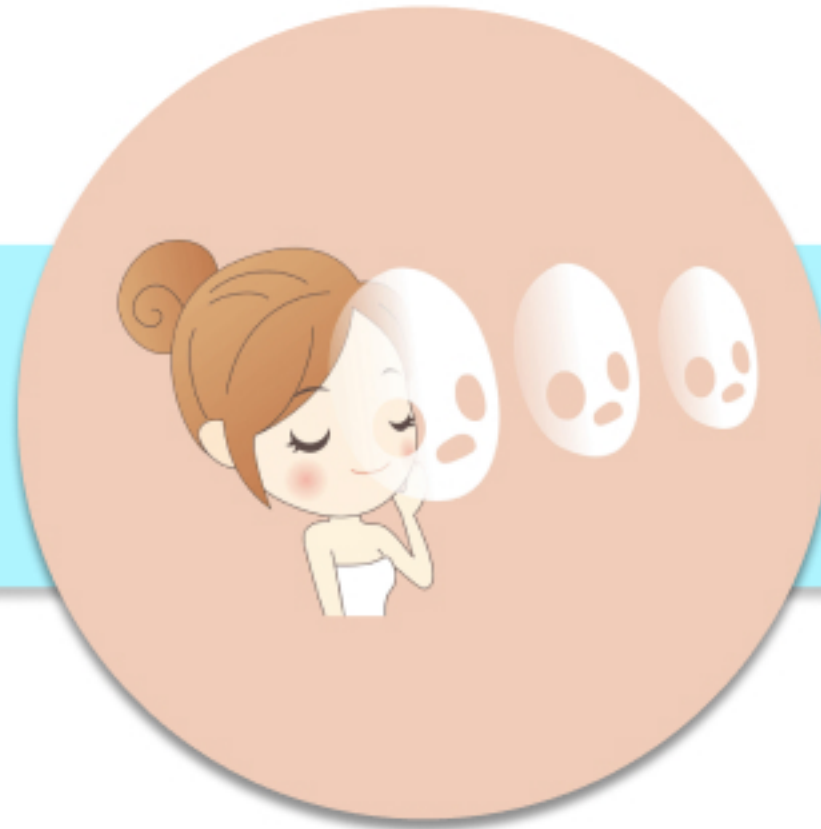
It doesn't feel heavy

Unique Features



Nutritious and moisturizing finish without stickiness

Allows nutrients in essence to absorb into the skin and does not leave behind stickiness or oiliness upon removal from skin, providing a refreshing finish



No irritation on the skin even with everyday use

Daily custom mask sheet designed for everyday use. The natural ingredients and smooth fiber structure of the sheet minimize skin irritation



Lightly place on tired skin Simple and easy to use at any time

Light and easy wear whenever your skin needs it

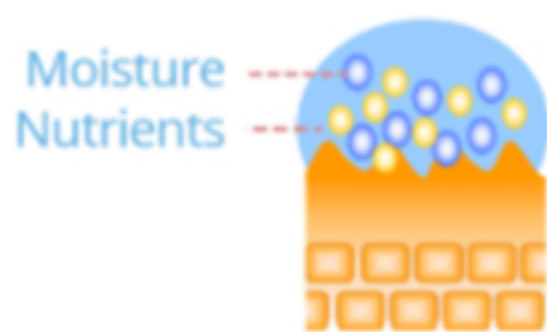
Product Information

Atomy Daily Mask (Hydrating and Lifting)

Lasting moisturization for elastic skin!

- ✔ A moisture film is formed after moisture and active ingredients are supplied to the skin
- ✔ 'Moist wrapping system' creates a moisturizing film to maintain moisture for along time

Moist Wrapping System



The 'Moist Wrapping System' forms thickly on the skin
Immediately supplies moisture and active ingredients



Supplies moisture and nutrients by creating a moisture holding wrapping system over the skin
Maintains elastic skin by strengthening skin's moisture retention



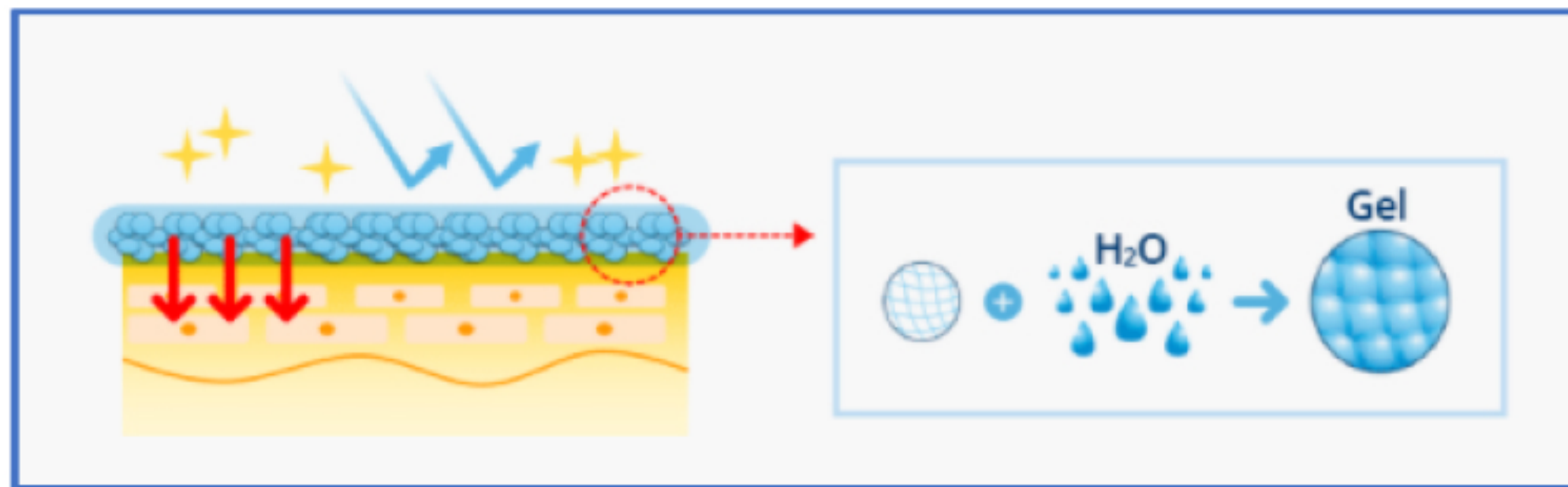
Product Information

Atomy Daily Mask (Moisturizing and Brightening)

Sufficient moisturizing along with brightening!

- ✔ The 'Water Bank Gel System' formed by sand lily extract and moist gel is effective for brightening skin
- ✔ Helps achieve glowing skin and healthy skin tone for long-lasting moisturized and vitalized skin

Water Bank Gel System



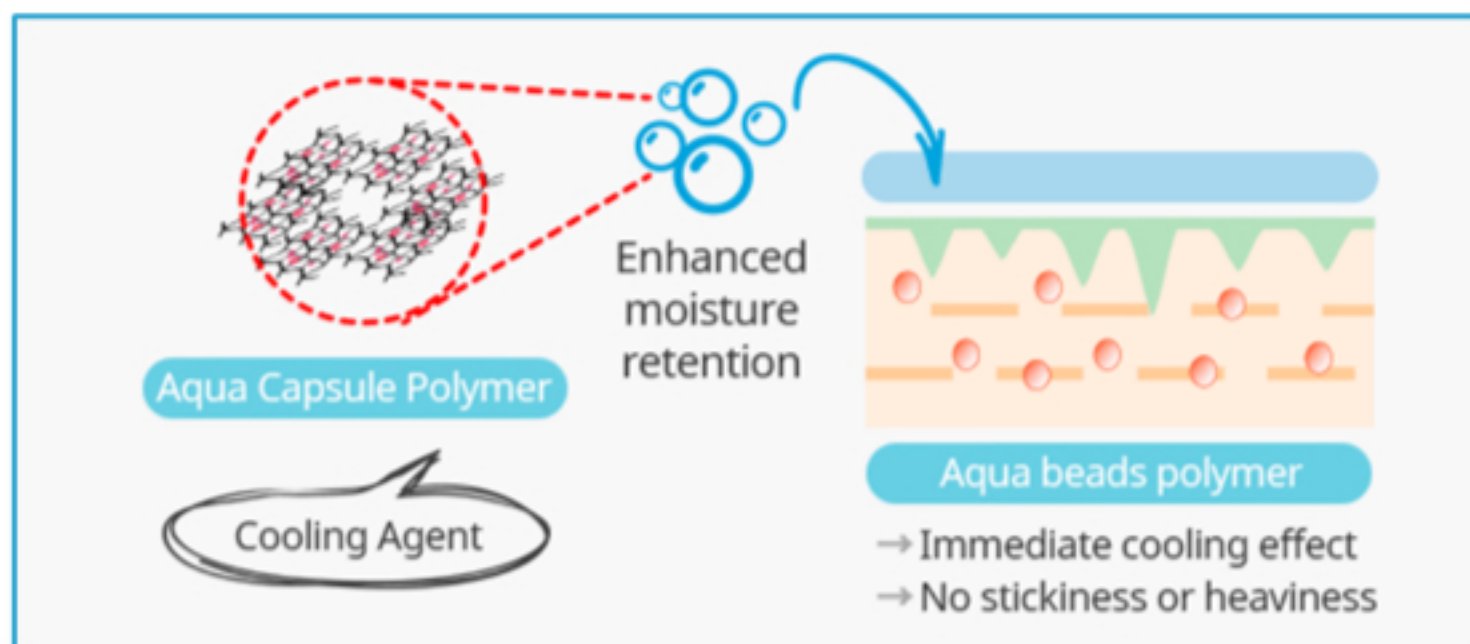
Product Information

Atomy Daily Mask (Cooling and Soothing)

Quick and smooth for skin turned sensitive from UV rays!

- ✔ 'Cooling Aqua Capsule Polymer System' quickly soothes the skin by immediately lowering the skin temperature
- ✔ Long lasting clear and cooling effect from non-menthol ingredients
- ✔ The long-lasting cooling effect helps alleviate skin redness and cools skin heated from UV rays

Cooling Aqua capsule polymer system



- 1 Aqua Capsule Polymer**
: Formation of moisture pockets between networks
→ The aqua capsule polymer quickly absorbs into the skin for a powerful cooling effect
- 2 Non-menthol ingredient** : Long-lasting cooling effect
→ Effectively stabilizes damaged skin

Main Ingredients:

Atomy Daily Mask (Hydrating and Lifting)

- ✓ *Vitamin Peptide*
- ✓ *Acacia Collagen*
- ✓ *Hyaluronic Acid*

Atomy Daily Mask (Moisturizing and Brightening)

- ✓ *Sand Lily*
- ✓ *Resurrection Plant*
- ✓ *Sweetone Peptide*
- ✓ *Alps Gigawhite*

Atomy Daily Mask (Cooling and Soothing)

- ✓ *Natural Protector*
- ✓ *Panthenol (Vitamin B5)*
- ✓ *Iceland Glacial Water*

Directions



1

Use Toner
after Cleaning



2

Apply the mask on the face
by matching the position of
the eyes and mouth. Evenly
adhere the mask to the
face



3

Adhere the product on the
face and remove after 10
to 20 minutes. Apply the
remaining essence evenly



4

Finish with lotion or
cream, depending on
your skin's condition

Precautions

1.

Refrain from using the product on wounds

2.

Atomy Daily Mask Sheets are thin, ultra-adhesive sheets
Unfold carefully when using

3.

Storage and Handling Precautions
1- Keep out of reach of children's
2- Avoid direct exposure to sunlight

4.

If you experience redness (from direct sunlight), swelling, itchiness or other side effects when using this product, please consult a specialist