

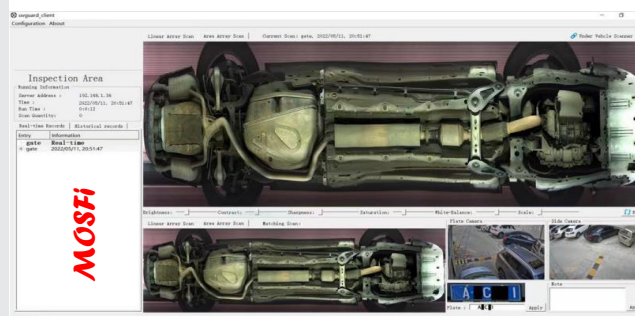
### \*\*\*OUR ACHIVMENTS\*\*\*

**LIFE TIME OPPORTUNITY : BE A PART OF  
CENTRAL VISTA PROJECT**

### GREAT OPPORTUNITIES :

Secured around 25 % air force stations  
with our technology and machinery.  
Serve regular Indian  
Army/NAVY/CRPF/CISF other security  
agencies.

**Serve Technical giants :-** DRDO, NTPC,  
INDIAN OIL, NHPC, ONGC,  
BHABHA ATOMIC PLANT, BHARAT  
ELECTRONICS  
LIMITED,L&T,DLF,ADANI,CFCL  
BHARAT DYNAMICS LIMITED,GUN &  
SHELL FACTORY,SCHINIDER,RFCL....etc.



Software interface



## MOS-UV300-F Under Vehicle Scanning System

### Introduction:

MOS-UV300-F can effectively scan and inspect the chassis of vehicles to search and analyze for suspicious objects or contraband such as drugs and weapons. The system is ideal for government, military, transportation and corporation facilities requiring security checkpoints for vehicles such as vans, tractor trailers, buses and passenger vehicles.

### Advantages:

- Dual Mode Scanner, generate area scan image and linear scan image.
- High resolution imaging, output 4096P color images.
- Real time imaging, scanned parts of chassis will show up on display in real time.
- Support vehicles with different height of chassis, no limitation for vehicle length.
- Embedded bi-directional triggers, support bi-directional scan.
- Modular design, repair system by replacing with spare parts within 10 minutes.
- Ultra slim design, only needs to dig into ground for less than 5 cm for installation.

## Technical Parameters

Area scan speed	Forward: 0 – 100 km/h, Backward: 0 – 25 km/h
Linear scan speed	Forward: 0 – 20 km/h, Backward: 0 – 20 km/h
Height limit	50 – 2000 mm
Width limit	< 4500 mm
Length limit	No limit
View angle	> 180°
Resolution	> 10000 x 4096
Capture rate	> 99.9%
Imaging time	Real time
Auto exposure	Support
Protector material	304 stainless steel
Load bearing	60 tones (vehicle weight)
Above ground	3 CM
Dimension	1200mm x 300mm x 75mm
Weight	27 KG
Working temperature	-40°C - 70°C
Protection level	IP68
<b>Control Box</b>	
Vehicle detector	2 channel
Detector sensitivity	4 level
POE	8 ports 10/100/1000M RJ45
POE standard	IEEE802.3af/at
ETH	1 port 10/100/1000M RJ45
Scanner connector	1 set
External trigger	2 channel
Power supply	AC 220V
Working temperature	-10°C - 50°C
Dimension	263mm x 150mm x 78mm
Weight	2 KG
Protection level	IP65

## OUR CERTIFICATES :-



## ❖ OUR OTHER PRODUCTS :

- ❖ MANUAL TYRE KILLER
- ❖ AUTOMATIC BOLLARDS
- ❖ ROAD BLOCKERS
- ❖ AUTOMATIC GATES
- ❖ BOOM BARRIER
- ❖ TURNSTILES
- ❖ AUTO SHUTTER SYSTEMS
- ❖ DFMD
- ❖ HHMD
- ❖ BAGGAGE SCANNER
- ❖ UVSS
- ❖ DOCK LEVELER
- ❖ ANTI DRONE SYSTEMS





# ALASKA

## AUTOMATION P. LTD

GSTIN : 07AALCA6526B1ZW

[www.alaskagroup.in](http://www.alaskagroup.in) | [www.mosfi.in](http://www.mosfi.in) | [sales@alaskagroup.in](mailto:sales@alaskagroup.in)

**India's No.1 Manufacturer of Entrance Automation & Security Machines**

**Boom Barrier, Spike Barrier, Tyre Killer, Flap Barrier, Swing Barrier, Toll Barrier, Boom Bollard, Tripod Turnstile, FHST, Automatic Gate (Sliding, Swing, Glass Door), Retractable Gate, DFMD, Baggage Scanner, Anti Drone System, Road Blocker, Softwares**

