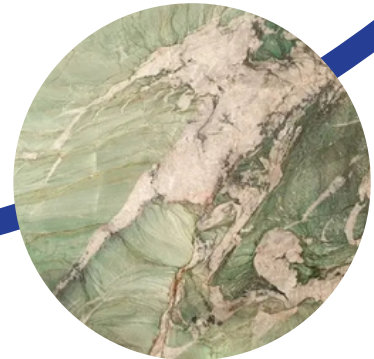




PRODUCT PROFILE & Thin Multi Wire Saw Machines for Natural Stone Block



WELCOME



ABOUT THE COMPANY

Established in 2012 as **FUSION TECHNOCRAFT** and incorporated as an LLP on May 17, 2018, **FUSION CNC TECHSYSTEMS LLP** is a leading manufacturer and importer of advanced CNC Stone Carving and Cutting Machine technology and stone diamond tools. Under the visionary leadership of **Mr. Manish Sukhadia**, Founder and Managing Partner, the company specializes in a diverse product range including CNC engraving and cutting machines, profiling machines, stone temple and pillar carving systems, sculptures, granite monuments, and tombstone machinery. Renowned for exceptional performance, high durability, low maintenance costs, and competitive pricing, Fusion CNC ensures the highest quality by using premium raw materials and maintaining a robust network of trusted vendors with an efficient bulk manufacturing infrastructure. Driven by innovation and guided by experience, Fusion CNC continues to build a strong presence in the stone processing machinery industry and shape excellence in CNC technology and stone craftsmanship.



+900
CUSTOMER



+100
PROJECT DONE

13+
YEARS OF EXPERIENCE

Thin Multi Wire Saw Machines for Natural Stone Block

DSY-XY3411/DSY-JS3411/DSY-XY3623/DSY-JS3623



Multi-Wire Saw Machine uses 0.35mm diamond wire to cut natural stone blocks into 3mm slabs with 0.5mm kerf. Compared to traditional gang saw, it increases yield by 10-30%. The machine combines CNC system with AI to automatically adjust cutting plans for stable operation. This machine processes marble, granite, onyx, quartzite, and luxury stones including jade. The multi-wire system creates clean cuts with minimal post-processing.

1. Compatible Materials & Products

Transforming Premium Stone Materials into High-Value Finished Products

Marble › Ultra-thin Luxury Slabs



Premium marble varieties like Calacatta, Carrara, and Statuario represent the pinnacle of luxury stone applications. Their distinctive veining patterns and translucent properties make them highly sought after for elite interior projects and statement features.

Our multi-wire cutting machine excels with these materials, producing slabs as thin as 3mm with minimal kerf loss. The precision diamond wire technology reduces material waste by up to 35% compared to traditional gang saws, preserving more of these valuable resources while maintaining perfect surface quality.

The ultra-thin cutting capability opens new design possibilities including backlit features, furniture inlays, and book-matched wall panels where the natural veining creates mirror-image patterns across adjacent surfaces. Our 0.35mm diamond wire ensures clean, consistent cuts even through delicate areas.

Fabricators working with premium marble benefit from significantly improved yield rates, transforming standard blocks into more finished product with less waste. The precision surface quality also reduces polishing requirements, saving time and preserving the natural stone character.

Perfect for: Luxury hospitality feature walls, book-matched panels, translucent backlit installations, yacht interiors, designer furniture, and premium architectural details where material efficiency and aesthetic perfection are paramount.

Luxury Stone › Large Background Walls



Luxury stones represent the pinnacle of natural elegance, featuring dramatic veining, unique coloration, and exceptional visual impact. These materials, including rare marbles, onyx, and semi-precious varieties, are increasingly sought after for large-format background walls in prestigious commercial and residential environments.

Our multi-wire cutting machine excels at producing oversized panels up to 3m×1.8m with consistent thickness and perfect edge quality. The diamond wire saw stone cutting technology maintains precise tension control throughout the entire cutting surface, eliminating edge chipping and ensuring uniform thickness across large dimensions essential for seamless installation.

The super thin multi-wire saw machine creates panels as thin as 5mm, reducing weight while maintaining structural integrity. This enables installation in applications where traditional thicker slabs would be impractical due to weight limitations. The reduced material volume also significantly improves cost-efficiency when working with these premium materials.

For luxury interior designers and architectural firms, these large-format background walls create breathtaking visual statements that showcase the stone's natural beauty across expansive surfaces. The book-matching capability enabled by precise cutting ensures continuous veining patterns across adjacent panels for truly spectacular installations.

Perfect for: Hotel lobbies, corporate headquarters, luxury retail environments, private residences, and exclusive hospitality venues where dramatic stone features create unforgettable impressions and elevate the overall design aesthetic to new levels of sophistication.

Premium Jade › High-Value Stone Slabs



Premium jade represents one of the most culturally significant and valuable stone materials in the world. These rare, semi-precious stones feature distinctive colors ranging from vibrant greens to whites, lavenders, and blacks, with exceptional translucency and structural density that have made them prized throughout history.

Processing jade requires extraordinary precision due to its exceptional value and distinctive material properties. Our diamond wire saw stone cutting technology achieves material yield improvements of 40-50% compared to traditional methods, transforming more of these precious resources into finished products while preserving their natural beauty and integrity.

The multi-wire cutting machine delivers consistent 4-8mm slabs with exceptional surface quality, minimizing the need for extensive finishing processes that could compromise the stone's value. Our AI-powered Smart Recipe system automatically adjusts cutting parameters based on the specific characteristics of each jade block, ensuring optimal results even with material variations.

For specialty stone processors working with these high-value materials, our technology provides unprecedented control and efficiency. The precision cutting process preserves more of the natural material while ensuring consistent quality, significantly improving profitability when working with stones that can command thousands of dollars per kilogram.

Perfect for: Museum-quality installations, luxury residential features, high-end commercial spaces, cultural monuments, and exclusive decorative elements where the natural beauty and cultural significance of jade create distinctive focal points of exceptional value and meaning.

2. Cases

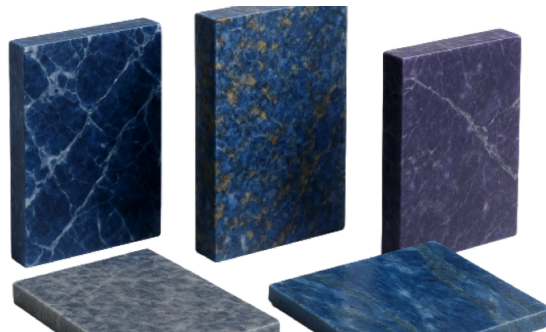
Ultra-Thin Cutting Excellence for Middle East Projects

A high-end stone supplier in Dubai faced significant challenges producing large-format thin stone panels for luxury hotel background walls. Traditional cutting methods resulted in breakage and inconsistent thickness. DINOSAW multi-wire saw achieved consistent 5mm cuts at dimensions up to 3m×1.8m.



40% Material Yield Improvement for Exclusive Markets

A premium stone processor in Vermont specialized in rare materials like Blue Bahia and Sodalite faced 55% waste using conventional saws. After implementing DINOSAW's Multi-Wire Saw with the AI-powered "Smart Recipe" profile, they achieved consistent 6mm cuts with perfect edge quality.



DS-3623H Lift Wire Saw Machine Configuration List (2025 Model)

Model	Basic	Pro version	Pro Max
EXW price	\$232500	\$278500	\$340860
Technical			
Feed Type	Block lifting	Block lifting	Block lifting
Processing Efficiency (mm/h)	Medium-soft marble: 100-150mm deep/h	Medium-soft marble: 100-150mm deep/h	Medium-soft marble: 100-150mm deep/h
Hard Marble Cutting	√	√	√
Cutting Dimensions (Length × Width ×Height) (mm)	3600X2100X2300		
Cutting Disc Thickness (mm)	5~30	3~30	2~30
Wire Speed (m/min)	0-20m/s	0-25m/s	0-35m/s
Wire Diameter (Marble Cutting) (mm)	0.35~0.6		
Wire Diameter (Luxury Stone Cutting) (mm)	0.65-0.8mm		
Main Structure			
Cutting Tension (N)	0-200 (middle part 130/150)	0-250(middle part 150/200)	0-300 (middle part 180/230)
Roller Diameter (mm)	320	350	400
Roller Material	Iron + polyurethane	Aluminum + polyurethane	Carbon fiber + polyurethane
Roller Adjustment Range (mm)	0-2300		

Wire Storage Length (m)	30000		
Servo Rope Tensioning Feedback Device (Cutting current feedback adapts to processing speed, reducing wire breakage risk. IoT-enabled remote operation and monitoring)	—	√	√
Rope Break Protection Device	—	√	√
Bearing Housing	Harbin HRB bearings	Japanese NSK bearings	Swedish SKF bearings
Machine Body Material	Cast iron	Cast iron	HT 300 Cast iron
Data			
Main motor power (kW)	42X4	60X4	64X4
Total installed power (kW)	around 200KW	around 270KW	around 270KW
Main motor cooling method	wind cooling		
Lifting stroke (mm)	2400		
Cooling water flow (L/min)	1000		
Lubricating oil maintenance system	Automatic lubrication		
Main unit dimensions			
Total unit weight	34T	37T	42T
Number of transport trolleys		1	2

Electronic

Machine Operation Learning Time	Self-developed wire saw system, get started in 5 minutes		
Servo System	Sine	Inovance	Siemens
Main Electrical Components	Delixi	Schneider	Siemens
PLC + Touch Screen	Huichuang	Inovance	Siemens
Core Electrical Components	Delixi	Schneider	Siemens
Power-Down Energy Recovery	—	√	√
Start-Up and Shutdown Time	8s	5s	4s
Shared DC Bus (Energy Savings)	—	√	√
Number of Standard Rollers	34T	37T	42T
Warranty	6 month	1 year	1 year

Optional

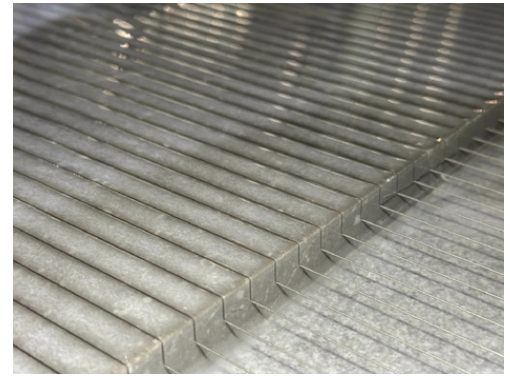
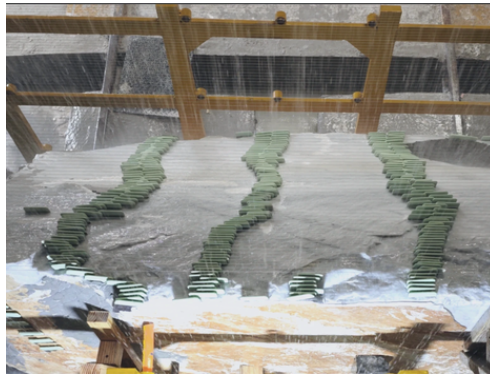
Rotary Worktable	\$5,000		
Worktable Transfer Carriage	\$4,286		
Track Extension (per meter)	\$286		
Spindle Box Package (Driver/Slave)	3000/ 2500	4,000/ 3,100	5,000/ 43,000
Roller Price	\$3,200	\$4,800	\$9,500
Wire Welding Machine	\$4,571		
Roller Lathe	38500/46900		

Tension Pulley	\$66
Guide Wheel Rubber Ring	\$2
Winding Machine	\$19,714

4. Core Benifits

Transform Stone Blocks into Ultra-Thin Slabs

Transform Premium Stone into Maximum Profit



5-Minute AI Operation

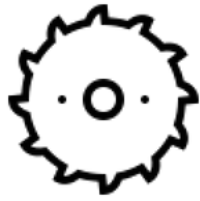
CNC system with AI cutting library auto-recommends optimal parameters for one-click operation.

3mm Ultra-Thin Slab Cutting

Low vibration system prevents edge chipping and breakage, enabling thin cuts on delicate stone.

97% Material Yield

Narrow diamond wire reduces kerf width, maximizing slab output from each stone block.



High-Speed Cutting

Advanced 3S quick start-stop system with 42m/s high-speed cutting



Precision Control

Siemens servo motors provide precise tension control with $\pm 1N$, ensuring consistent cutting quality.



Tension Feedback Safety System

Adaptive cutting speed based on tension feedback minimizes wire breakage risk during operation.



Quiet Operation

Advanced noise design creates a quieter workshop under 75dB, improving worker comfort and safety.



20% Energy Saving System

Energy recovery system converts braking energy back to electricity, reducing operating costs.



Eco-friendly Production

Filtration system reduces cutting slurry and wastewater by over 80%



PROUD TO BE MEMBER OF



Centre for
Development of Stones



CONTACT US

FUSION CNC TECHSYSTEMS LLP



Corporate Office: A 1104-1105, Money Plant High Street, Jagatpur Road, Sarkhej - Gandhinagar Hwy, nr. BSNL Office, Gota, Ahmedabad, Gujarat 382470 **Factory:** Plot No. 3, Dantali Industrial Estate, Village, Dantali Taluka Kalol, Dist. Gandhinagar (India) 382721



+91 9824236644
+91 7861866734



info@fusioncnc.in
sales@fusioncnc.in