

Your Trusted Partner in Neuro & Medical Diagnostics
An ISO 9001:2015 Certified Company | Supplying Only CE & CDSCO Approved Equipment
25+ Years of Expertise in Cardiology & Computerised Diagnostic Equipment
MSME Registered | Valid GST | GeM Registered Supplier
PAN India Reach with Local Support Teams

Email: rsenterprises227@gmail.com
Call/WhatsApp: +91-9832362661 / +91-9474878436
Website: <https://rshealthsupplies.com/>
<https://www.rsenterprisesindia.co.in/>

To,

Subject: Quotation for EEG Machine

Dear Sir/Madam,

Greetings from R.S. Enterprises!

Thank you for your interest in our neuro-diagnostic equipment. Please find below the detailed quotation for the ****All model available 24/32/64 Channel Portable EEG Machine****, a compact and efficient solution designed for hospital, ICU, and mobile use.

These portable EEG system offers high-performance features such as brain mapping, simultaneous acquisition and review, USB connectivity, auto spike detection, and compatibility with legacy and modern Windows systems.

We've also extended a special discounted price for your consideration. All terms, specifications, and inclusions are mentioned below.

Please feel free to contact us for any clarifications or customization. We look forward to serving your institution with dedication and care.

Warm regards,
Shashee Kumar
Founder & Director
R.S. Enterprises

1. Product Name:EEG MACHINE

(*Without Laptop, Printer, or Table*)

Table with Product Price GST @ 12%

Product Name	Quantity	Price	GST @ 12%	Total Price (Incl. GST)
Neurocompact 24 Channel EEG	1	₹100,000.00	₹12,000.00	₹112,000.00
Neuromax 32 Channel EEG Machine	1	₹125,000.00	₹15,000.00	₹140,000.00
Neuromax 32 Channel Video EEG	1	₹150,000.00	₹18,000.00	₹168,000.00
Neuromax 64 Channel Video EEG	1	₹375,000.00	₹45,000.00	₹420,000.00

✓ Product Highlights & Key Features

- Compact sleek molded ABS cabinet – portable and ideal for ICU use
- 24-channel EEG recording with montage bar and USB connectivity
- No external power/battery – optically isolated patient box
- Brain Mapping with topographic voltage/frequency maps and spectral graph
- Auto spike detection and split-screen facility for comparing 3 montages
- Auto search bar and user-defined acquisition protocols
- Simultaneous EEG acquisition and review
- Online/offline reformatting of high/low filters, sensitivity, and sweep
- Event marking, comment writing, and page tagging during review
- Inbuilt word processor and advanced reporting software
- EEG data can be emailed, archived, and viewed on any PC (no extra software)
- Montage reformatting and selective print queue management
- Network option and offline 32-channel display facility available

Compatible with Windows 10

☐ Technical Specifications

Specification	Value
NO. OF CHANNELS	24 Channels
A/D CONVERSION	14 bit
SAMPLING RATE	1024 Hz
INPUT IMPEDANCE	>10 M ohm
CMRR	> 100db
NOTCH FILTER	50 Hz ON/OFF
SWEEP SPEED	7.5, 15, 30 & 60 mm/sec
LOW PASS FILTER	0.1, 0.3, 1 & 5 Hz
HIGH PASS FILTER	15, 35, 70 & 100 Hz
NOISE LEVEL	Less than 1 μ V
SENSITIVITY	1 to 100 mm/ μ V (multiple steps)
FLASH RATE	1 to 30 Hz (software-controlled)
DIMENSION	195mm x 165mm x 50mm
WEIGHT	650 grams

☒ System Comprises:

- - EEG Main Console
- - Hand Photic Flash
- - EEG Acquisition & Review Software (CD)
- - EEG Analysis and Brain Mapping Software (CD)
- - CPU Interface Cable
- - Laptop (Recommended: I3 , 1 TB HDD, 4 GB RAM, 19" LED)

Compatible Computer (Not Included)

Component	Specification
CPU	I3 above, 4 GB RAM, 1TB HDD
Display	19" LED Monitor
OS	Windows -10/11
Connectivity	USB Interface
Optional	LAN Network Support

2. Product Name:

NEUROMAX (NMX-32) – 32 Channel Digital EEG and Long Term Monitoring System(Non Video)
(*Without Computer, Printer, or Monitor*)

✓ Product Highlights & Key Features

- - Facility to record up to 32 Channels with montage bar
- - USB interface – no external power or battery required
- - Brain Mapping with multiple display options
- - Various EEG scrolling options available
- - Resolution-independent user interface
- - Coherence, FFT Graph and tabular data analysis
- - Simultaneous acquisition and analysis of EEG data
- - Event marking and comments in analysis mode
- - Complete EEG data transfer via CD/DVD/hard disk
- - Easy connectivity with Laptop/Desktop
- - Online impedance check – numeric display for each electrode
- - Online/Offline reformatting of filters, sensitivity, sweep settings
- - User-defined photic stimulator protocols
- - Advanced graphic brain mapping with CSA & DSA
- - Split-screen facility for focused event/montage study
- - Auto backup for patient data recovery
- - Modular amplifier with long-distance signal reliability
- - Simultaneous EEG recording and review

3. Hardware & Software "NEUROMAX" (NMX-32) Portable VIDEO EEG Machine

Monitoring Systems having following features & specifications

- • Supplied without computer, printer, Monitor.
- • It facility to record up to 32-Channels with montage bar,
- • It provided with an USB interface; no external power or battery shall be Required.
- • Brain Mapping with multiple options available
- • Facility of Online/Offline split video.
- • It Dual monitor option for video.
- • It various options for EEG scrolling.
- • It Synchronized EE- Highly with audio & video frame rate of 30 frames/sec.
- • It resolution independent user interface.
- • Coherence, FFT Graph and tabular data.
- • Simultaneous Analysis & Acquisition of EEG data.
- • The facility to mark event and write comment in analysis mode.
- • Facilitate complete EEG data transfer from PENDRIVE /hard disc.
- • Easy connectivity with Laptop/Desktop.
- • Online impedance check with displays of numeric values of all Electrodes.
- • Online/offline reformatting of filters, low filters, sensitivity and sweep on channels.
- • Use defines photic stimulate protocols.
- • It Advanced graphic brain mapping with spectral array (CSA) & Density Spectral Array (DSA).
- • The unit Split screen facility to study and event/montage carefully during Acquisition.
- • Auto backup of patient data for easy recovery.
- • Long distance modular amplifier design with flexibility and reliability.
- • Day/night digital video camera with high resolution / night vision.
- • Simultaneous analysis and recording.

Specifications:

- • PORTABLE EEG MACHINE: 32 Channel
- • A/D Conversion : 16 bit
- • Sensitivity: 1Uv/mm to 1000 uV/mm & user definable
- • Low Filter : 0.1, 0.3, 0.5, 1, 3, 5 Hz & user definable
- • High Filter : 15, 30, 70 Hz & user definable
- • Notch Filter : 50/60 Hz on/off
- • Sweep Speed : 7.5, 15, 30 & 60 mm/sec

Input Impedance : >20mohm

- • CMRR : >110 db
- • Noise level : <Less than 1μv
- • Flash Rate : 1 to 60 Hz
- • Power Supply : USB powered.

Standard Accessories

- • Disc Electrodes (Gold Plated) : 50 nos
- • EEG Paste : 2 Jars
- • Ground Wire : 1 No.
- • USB Interface Cable : 1 No.
- • PhoTic Flash : 1 No.
- • Coloured Camera : 1 No.
- • Electrode Board : 1 No.
- • EEG Software backup CD : 1 No.

4. Hardware & Software "NEUROMAX" (NMX-64) Portable VIDEO EEG Machine

Monitoring Systems having following features & specifications

- Supplied without computer, printer, Monitor.
- It facility to record up to 64-Channels with montage bar, 8 bipolar (2 EKG & 6 DC Channels).

It provided with an USB interface; no external power or battery shall be Required.

- Brain Mapping with multiple options available
- Facility of Online/Offline split video.
- It Dual monitor option for video.
- It various options for EEG scrolling.
- It Synchronized EE- Highly G with audio & video frame rate of 30 frames/sec.
- It resolution independent user interface.
- Coherence, FFT Graph and tabular data.
- Simultaneous Analysis & Acquisition of EEG data.
- The facility to mark event and write comment in analysis mode.
- Facilitate complete EEG data transfer from CD/DVD /PENDRIVE /hard disc.
- Easy connectivity with Laptop/Desktop.
- Online impedance check with displays of numeric values of all Electrodes.
- Online/offline reformatting of filters, low filters, sensitivity and sweep on channels.
- Use defines photic stimulate protocols.
- It Advanced graphic brain mapping with spectral array (CSA) & Density Spectral Array (DSA).
- The unit Split screen facility to study and event/montage carefully during Acquisition.
- Auto backup of patient data for easy recovery.
- Long distance modular amplifier design with flexibility and reliability.
- Day/night digital video camera with high resolution / night vision.
- Simultaneous analysis and recording.
- Operating systems windows 10/11

Specifications:

- • PORTABLE EEG MACHINE: 64 Channel
- • A/D Conversion : 16 bit
- • Sensitivity: 1Uv/mm to 1000 uV/mm & user definable
- • Low Filter : 0.1, 0.3, 0.5, 1, 3, 5 Hz & user definable
- • High Filter : 15, 30, 70 Hz & user definable
- • Notch Filter : 50/60 Hz on/off
- • Sweep Speed : 7.5, 15, 30 & 60 mm/sec

Input Impedance : >20mohm

- • CMRR : >110 db
- • Noise level : <Less than 1μv
- • Flash Rate : 1 to 60 Hz
- • Power Supply : USB powered.

Standard Accessories

- • Disc Electrodes (Gold Plated) : 50 nos
- • EEG Paste : 2 Jars
- • Ground Wire : 1 No.
- • USB Interface Cable : 1 No.
- • Phobic Flash : 1 No.
- • Coloured Camera : 1 No.
- • EEG MACHINE CONSOLE : 1 No. WITH STAND
- • EEG Software backup CD : 1 No.

Terms & Conditions:

- - Validity: Quotation valid for 30 days
- - Delivery: Within 10–15 working days from order confirmation
- - Warranty: 1-year standard manufacturer warranty
- - Payment Terms: 100% advance with purchase order
- - Installation & Demo: Included (within service area)
- - Support: Online & On-site technical assistance available

EEG Machine Brochure – Neurology Solutions

CE-Certified & CDSCO-Approved EEG Systems for Clinical & Research Excellence

We provide advanced EEG systems designed for hospitals, neurology clinics, and research institutions. Our range includes high-channel video EEG systems, compact clinical models, and ultra-portable devices that ensure precision, reliability, and ease of use.

Comparison of Models

Features	Neuromax 32/64-Channel (Showcase)	Neurocompact 24-Channel	Necton Ultra-Portable
Type	Advanced Video EEG System	Compact Clinical EEG	Pocket-sized Portable EEG
Channels	32 (Expandable to 64)	24	24
Operation	PC-based with video integration	PC-based routine EEG	Portable handheld with software
Key Features	Brain Mapping, Epilepsy Monitoring, Sleep Studies, Long-Term Monitoring	Routine EEG, Compact Design, Cost-effective	Portable, ICU & Outdoor use, Quick setup
Power Supply	USB powered	USB powered	USB powered
Data Storage	Long-term storage with advanced reporting	Basic storage & export	Portable data storage
Use Case	Hospitals, Research Institutes, Medical Colleges	Clinics, Teaching Institutes	Bedside, Emergency & Field use

Neuromax 32-Channel EEG

The Neuromax 32-Channel EEG Machine is a CE-certified and CDSCO-approved diagnostic solution, trusted by leading hospitals and medical institutions. With advanced amplifiers, high-resolution recording, and video EEG integration, it is ideal for epilepsy monitoring, sleep studies, and research applications. Expandable to 64 channels, Neuromax ensures precision, scalability, and unmatched clinical reliability.

Accessories

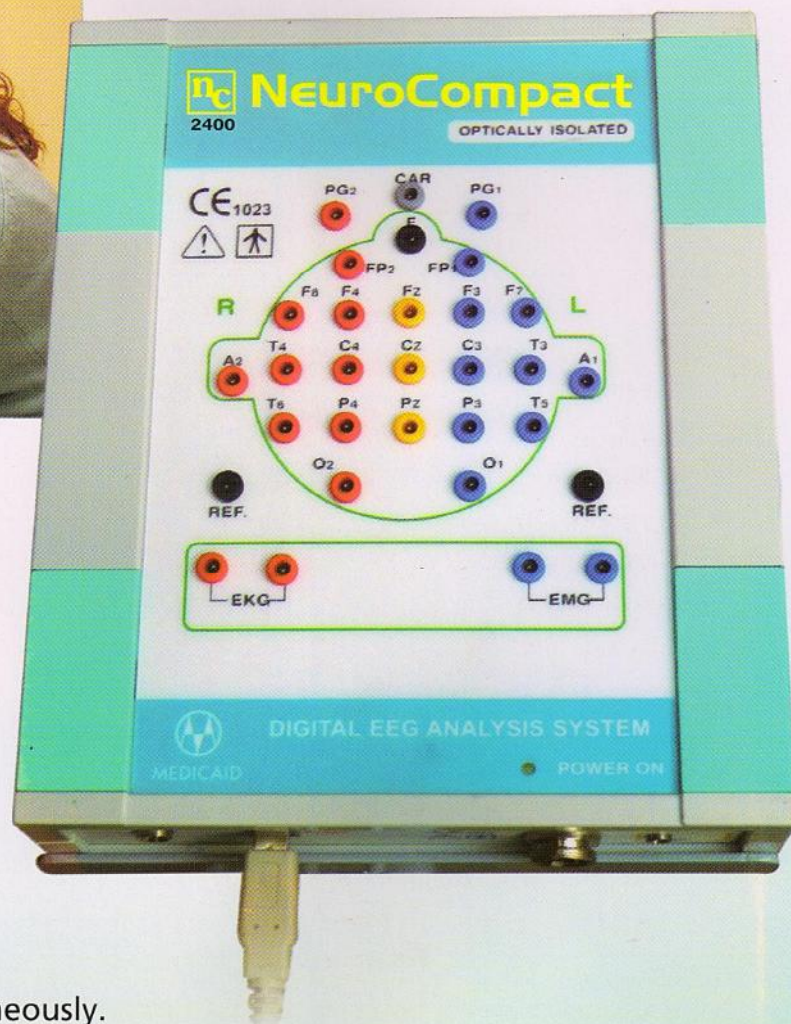
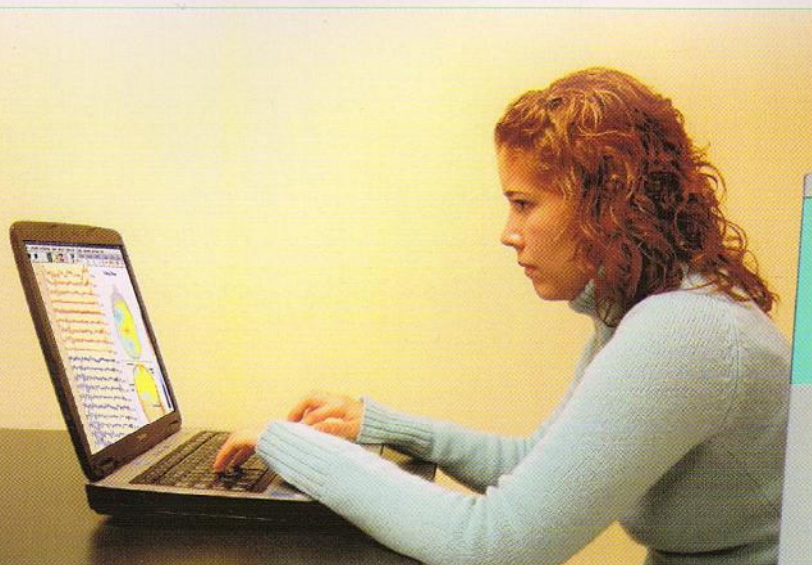
- EEG Electrodes & Caps
- Video Integration Tools
- Amplifiers & USB Interface
- Patient Response Switches
- Software & Analysis Tools
- Carry Case for Portable Models

□ For detailed pricing & quotation, contact us at: rsenterprises227@gmail.com | +91 9832362661

NeuroCompact

Truly Portable Digital EEG

Directly connect to USB port, no external power supply required



Features

- Easy laptop connectivity.
- Ideally suitable in ICU's.
- In-built word processor for reporting.
- Brain Mapping.
- Optically Isolated.
- Auto Spike Detection.
- Operating system Windows XP.
- Comparison of three montages simultaneously.
- Complete EEG transfer on CD & playback without additional software.
- Upgradable to Video EEG.



An ISO 13485 : 2003 Company

CE
1023

NeuroCompact is the consistent further development of our paperless digital EEG device and represents a new generation of our digital system based on Windows XP.

Technical Specification

- Max. no. of Display Channels
 - NC - 2400 : 24 Channels
 - NC - 3200 : 32 Channels
- A/D Conversion : 16 bit
- Sampling Rate : 1024 Hz
- Sensitivity : 1 to 1000 μ v
- Low Pass Filter : 0.1, 0.3, 1 & 5 Hz
- High Pass Filter : 15, 35, 70, 100 Hz
- Notch Filter : 50/60 Hz on/off
- Sweep Speed : 7.5, 15, 30 & 60 mm/sec
- Input Impedance : > 10 M ohm
- CMRR : > 100 db
- Noise Level : Less than 1 μ v
- Flash Rate : 1 to 30 Hz Software Controlled
- Dimension : 195 x 165 x 50 mm
- Weight : 650 gms. (without laptop)

Standard Accessories

- Disc Electrodes - 50 nos.
- EEG Paste - 2 Jars.
- Ground Wire - 1 No.
- Interface Cable - 1 No.
- Photic Flash - 1 No.
- Installation CD - 1 No.
- Carry Bag - 1 No.



Photic Flash



Installation CD



EEG Paste



EEG Electrodes



Interface Cable

Features

- Online, Offline reformatting of HLF, LLF, Sensitivity and number of Channels
- Split Screen facility to compare three montages simultaneously
- Montage diagram & Photic Marks on Printout
- Automatic Hyperventilation Timings
- Automatic AC Impedance check
- Brain Map of frequency, Spectral and voltage with Left/Right view
- Programmable Colour of each Channels
- Users Programmable Photic Sequences & Events
- Ultra fast automatic paging facility for efficient analysis
- Facility to zoom required portion of data
- Facility to write comments during review
- Facility to send data by e-mail
- Search bar facility to access to any part of data
- User defined protocol for acquisition
- Computerised calculation of Amplitude & Time
- Selected EEG data extraction
- Simultaneous acquisition and Analysis facility
- Facility to mark pages in review and print

Computer Hardware (Optional)

- Computer : Core 2 Duo 2.93 GHz, 2 GB RAM
: 350 GB HDD or better
DVD Writer, Keyboard, Mouse
- Monitor : 17" Colour Supporting 1024x768 mode
- Printer : Any Inkjet/Laser printer supporting windows.

Optional

High Resolution Camera for Video EEG
Model : NC-2400 V, NC-3200 V

MARKETED BY
R.S. Enterprises



Head Office
R.S. Enterprises
Mayfair Crown B-202
Zila Parishad Road
Jyoti Nagar, Siliguri
734001

Kolkata Branch
R.S. Enterprises
Upohor Complex
C-2/614, Chakgaria
Kolkata - 94

Guwahati Branch
R.S. Enterprises
3rd Floor,
Above Old SBI Building
Ulubari, Guwahati
781007

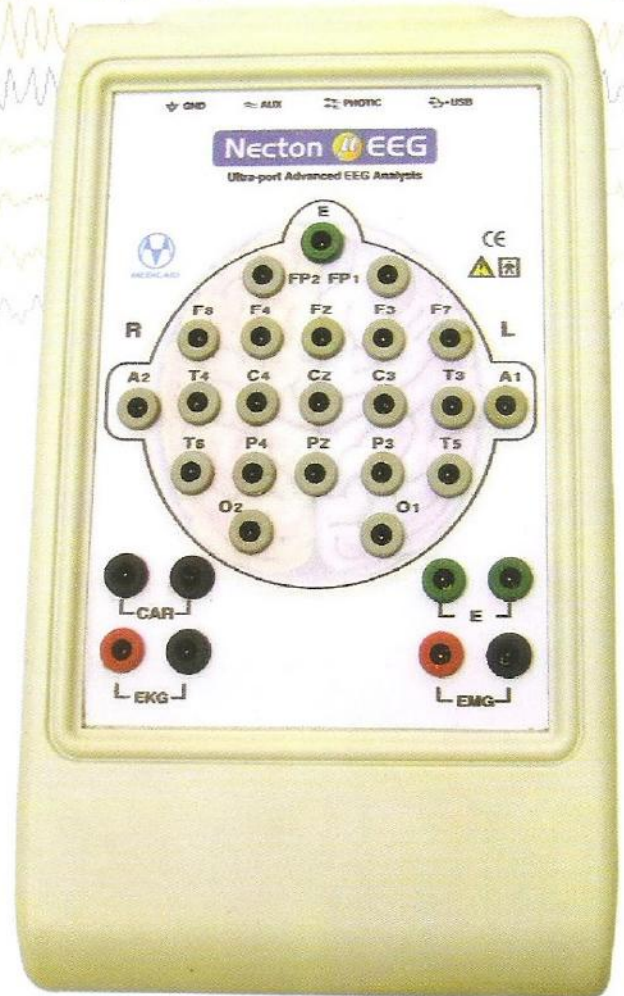
www.rsenterprisesindia.co.in
E-mail: rsenterprises27@gmail.com
Phone: 9832363266 / 9800685887 / 9474878436

MANUFACTURED BY
Medicaid Systems

Necton μ EEG

Ultra-port Advanced EEG Analysis

Directly connect to USB port, no external power supply required



Features

- Easy laptop connectivity.
- Ideally suitable in ICU's.
- In-built word processor for reporting.
- Brain Mapping.
- Optically Isolated.
- Auto Spike Detection.
- Operating system Windows Based.
- Comparison of three montages simultaneously.
- Complete EEG transfer on CD & playback without additional software.
- Upgradable to Video EEG.



Serving Health..... Through Technology

Features

- Online, Offline reformatting of HLF, LLF, Sensitivity and number of Channels
- Split Screen facility to compare three montages simultaneously
- Montage diagram & Photic Marks on Printout
- Automatic Hyperventilation Timings
- Automatic AC Impedance check
- Brain Map of frequency, Spectral and voltage with Left/Right view
- Programmable Colour of each Channels
- Users Programmable Photic Sequences & Events
- Ultra fast automatic paging facility for efficient analysis
- Facility to zoom required portion of data
- Facility to write comments during review
- Facility to send data by e-mail
- Search bar facility to access to any part of data
- User defined protocol for acquisition
- Computerised calculation of Amplitude & Time
- Selected EEG data extraction
- Simultaneous acquisition and Analysis facility
- Facility to mark pages in review and print

Technical Specification

- Channel : 24-32
- A/D Conversion : 16 bit
- Sampling Rate : 1024 Hz
- Sensitivity : 1 to 1000 μ v
- Low Pass Filter : 0.1, 0.3, 1 & 5 Hz
- High Pass Filter : 15, 35, 70, 100 Hz
- Notch Filter : 50/60 Hz on/off
- Sweep Speed : 7.5, 15, 30 & 60 mm/sec
- Input Impedance : > 10 M ohm
- CMRR : > 100 db
- Noise Level : Less than 1 μ v
- Flash Rate : 1 to 30 Hz Software Controlled
- Dimension : L- 6.75 x W- 4.00 x H- 1.25 Inch
- Weight : 240 Gram

Laptop, Computer Hardware (Optional)

- CPU : i3 Processor, 2 GB RAM, 500 GB HDD, DVD Writer, OS Window
- Printer : Any Inkjet Printer supporting window
- Optional : Laser Printer

Standard Accessories

- Disc Electrodes - 50 nos.
- EEG Paste - 2 Jars.
- Ground Wire - 1 No.
- Interface Cable - 1 No.
- Photic Flash - 1 No.
- Installation CD - 1 No.
- Carry Bag - 1 No.



Photic Flash



Installation CD



Conductive EEG Paste



Gold Plated EEG Electrodes



Interface Cable

Optional

High Resolution Camera for Video EEG

MARKETED BY
R.S. Enterprises



Head Office
R.S. Enterprises
Mayfair Crown B-202
Zila Parishad Road
Jyoti Nagar, Siliguri
734001

Kolkata Branch
R.S. Enterprises
Upohor Complex
C-2/614, Chakgaria
Kolkata - 94

Guwahati Branch
R.S. Enterprises
3rd Floor,
Above Old SBI Building
Ulubari, Guwahati
781007



Neuromax

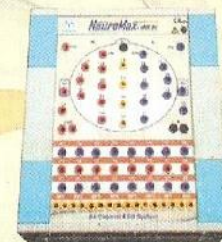
64 Channel window based Digital Video EEG and Long Term Monitoring Systems



*Superior Performance..
Favourable Price.*

Salient Features

- ♦ Facility to record/service upto 64 channels with montage bar (48 EEG, 8 Bipolar 2 EKG, 6 DC channels)
- ♦ USB interface, no external power or battery required.
- ♦ Brain mapping with multiple options.
- ♦ Online/Offline split video
- ♦ Dual monitor option for video
- ♦ Various options for EEG scrolling
- ♦ Highly Synchronized EEG with audio & video frame rate of 30 frames/sec.
- ♦ Resolution independent user interface.
- ♦ Coherence, FFT Graph and tabular data.
- ♦ Simultaneous Analysis & Acquisition of EEG data.
- ♦ Facility to mark event and write comment in analysis mode.
- ♦ Complete EEG data transfer from CD/DVD hard disc.
- ♦ Easy connectivity with Laptop/Desktop.
- ♦ Online impedance check with displays of numeric values of all electrodes.
- ♦ Online/offline reformatting of filters, low filters, sensitivity and sweep on channels.
- ♦ Use define photic stimulate protocols.
- ♦ Advanced graphic brain mapping with Spectral Array (CSA) & Density Spectral Array (DSA).
- ♦ Split screen facility to study any event/montage carefully during acquisition
- ♦ Auto backup of patient data for easy recovery
- ♦ Long distance modular amplifier design with flexibility and reliability.
- ♦ Remote control video tracking device.
- ♦ Day/night digital video canvas with high resolution zoom facility.
- ♦ Simultaneous analysis and recording.





Neuromax

The one system that does it all! Starting with complete features of a 64-channel windows based video EEG system provides additional benefits of Spike Detection, useful data exchange networks, auto recording start/stop, advanced yet easy and flexible review... and much more.

Technical Specification

No. of display channel	: 64 Channel
A/D Conversion	: 16 bit
Sensitivity	: (1, 2, 5, 7, 10, 15, 20, 30) mm/50mv & user definable
Low Filter	: 0.1, 0.3, 1, 5 Hz & user definable
High Filter	: 15, 30, 70, 100 Hz & user definable
Notch Filter	: 50/60 Hz on/off
Sweep Speed	: 7.5, 15, 30 & 60 mm/sec.
Input Impedance	: >20m ohm
CMRR	: >100 db
Noise level	: <Less than 1µv
Flash Rate	: 1 to 30 Hz
Power Supply	: 220V± 10% 50 Hz

Standard Accessories

Disc Electrodes (Gold Plated)	: 50 Nos.
EEG Paste	: 2 Jars.
Ground Wire	: 1 No.
USB Interface cable	: 1 No.
Photic Flash	: 1 No.
Paper Rim (A4 Size)	: 1 No.
Coloured Camera	: 1 No.
Electrode Board	: 1 No.
EEG Software backup CD	: 1 No.
EEG Trolley Optional	: 1 No.

Computer Hardware

Core to Duo, 1 GB RAM, 360 GB Hard Disc.
17" LCD TFT Colour Monitor, Key Board, Mouse
Laser Printer/Inkjet Printer optional

MARKETED BY
R.S. Enterprises



Head Office
R.S. Enterprises
Mayfair Crown B-202
Zila Parishad Road
Jyoti Nagar, Siliguri
734001

Kolkata Branch
R.S. Enterprises
Upohor Complex
C-2/614, Chakgaria
Kolkata - 94

Guwahati Branch
R.S. Enterprises
3rd Floor,
Above Old SBI Building
Ulubari, Guwahati
781007

www.rsenterprisesindia.co.in
E-mail: rsenterprises27@gmail.com
Phone: 98323632661 / 9800685887 / 9474878436

MANUFACTURED BY
Medicaid Systems

Serving health...through technology