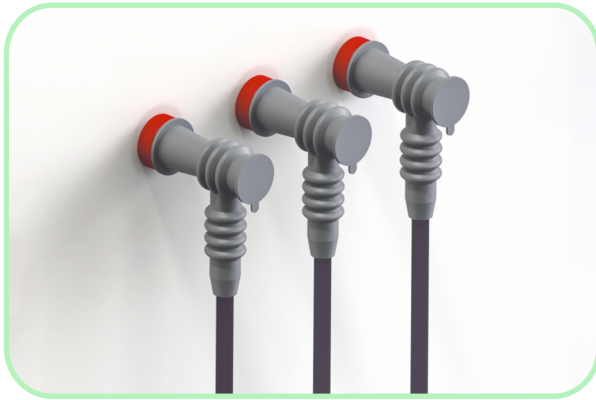


Cable Terminal Protector

GTPE-500 For RMU

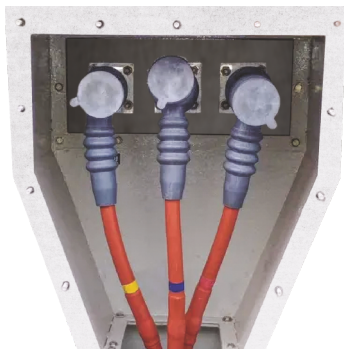


Gala Elbow Terminal Protector will be used in the cable entry boxes with any types of indoor terminations, where the phase to phase clearance is less & having possibility of air flashover, where the air will not give the adequate insulation level. This product will act as a barrier and minimize the chance of flashovers.

Components are manufactured from the special formulation of elastomeric material having good UV resistance, track resistance, insulation & mechanical properties. It is a moulded component and can be used on epoxy bushing. Each component is factory tested to provide reliability.

The Terminal protector GTPE-500 can be used in the RMU having bushing of C Type interface. This has been designed to exceed minimum industry test standards and have dielectric strength more than 15kV / mm.

The Terminal Protector GTPE-500 provides adequate insulation and is easy to install due to its one-piece design. However, this product is not touchproof.



Features & Benefits:

- Easy to install
- Suitable for cable range from 25sq mm to 400 sq mm
- Fits Sector shaped cables
- Facilitates Direct Voltage Testing
- Re-usable and Re-openable
- Economically Viable Solution for 11kV and 22kV
- Prevents Flash-over due to humid environment in HT cable entry box
- Protection from Short Circuit due to intervention by Reptiles, Birds, Animals
- Suitable to use RMU having bushing of C Type with compact design.

Selection Chart - Right Angle Boot

Product Code	Application Voltage(kV)	Bushing Center Distance
GTPE-1	12	95

Technical Specification

Test	Rated Voltage 12 kV	Rated Voltage 24 kV
AC High Voltage withstand Test for 1 min duration	28kV	50kV
Impulse withstand Test	75kV	125kV

Physical

TEST DESCRIPTION	RECORDED VALUE	TEST METHOD
1. Tensile Strength	10N/mm ² (MPa) (min.)	ASTM D638
2. Ultimate Elongation	200 % (min.)	ASTM D638
3. WaterAbsorption	0.5% (max.)	ASTM D570
4. Hardness	35 ± 5 shore D	ASTM D2240

Thermal

1. Continuous Temp. Limit	-40° to +115°C	IEC 216
---------------------------	----------------	---------

Electrical

1. Dielectric Strength	15 kV/mm.(min.)	ASTM D149
2. Volume Resistivity	1 x 10 ¹³ Ohm.cm min	ASTM D257
3. Dielectric constant	5 (max.)	ASTM D150



GALA THERMO SHRINK PVT. LTD.

M : 88791 22705 | E: info@galathermo.com | W: www.galathermo.com