

Gala Elastomeric End Seal has been made from specially formulated Rubber Compound and designed to give optimum efficiency to the Curing process by holding pressure to the desired level. It also helps to neutralize the usage of process water / gas by holding the Cable tight during production runs.

Gala Elastomeric End Seals are high performing seals used in the exit side of CV lines compatible with both water and gas cooling systems.

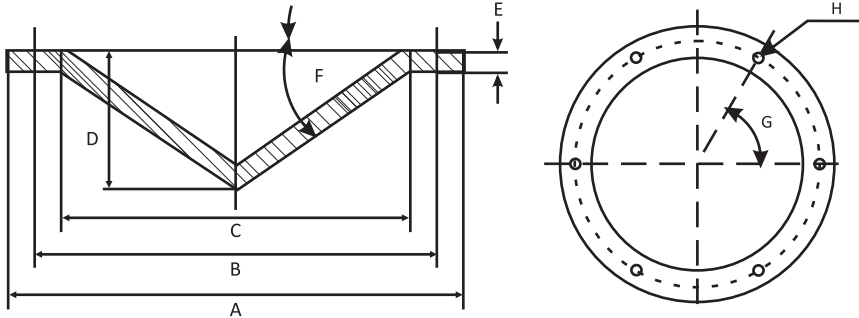
End Seals can be filled by open / close the sealing unit by hydraulic system and operation take place from control Panel, locked / unlocked manually.

Technical Specifications

TEST DESCRIPTION	TYPICAL VALUE	TEST METHOD
1. Dielectric Strength	12 kV/mm. (min.)	ASTM D149
2. Tensile Strength	5 N/mm ² (min.)	ASTM D638
3. Elongation	300% (min.)	ASTM D638
4. Density	1.23 gm/cm ³	ASTM D792
5. Hardness	60 ± 5 shore A	ASTM D2240
6. Continuous Operating Temp.	-20°C to 180°C	IEC 216

Features & Benefits:

- ❖ Long lasting and durable
- ❖ Temperature and pressure withstandability is good
- ❖ Resistance to Abrasion is good
- ❖ Easy to handle
- ❖ Harmless to insulation / sheath surface
- ❖ Excellent mechanical properties



Selection Chart

Gala Code	A (mm)	B (mm)	C (mm)	D (mm)	E (mm)	F (mm)	G (mm)	H (mm)
GSES-1 S	180	156	129	47	10	30°	60°	6x60° Ø9
GSES-1	255	226	195	68	10	30°	60°	6x60° Ø9

