

POWER MODULES

// THYRISTOR / THYRISTOR //

Device Type	V _{RRM} / V _{VDRM} (V)	I _{T(AV)} (A)	T _c (°C)	V _{TM} (V)	I _{TM} (A)	I _{TSM} (A)	dv/dt (V/ms)	I _{GT} (mA)	V _{GT} (V)	I _{RRM} / I _{IDRM} (mA)	T _{VJ} (°C)	V _{ISOL} (V)	R _{th(j-a)} (°C/W)	Outline
IRKT 27	1200-2200	25	85	1.8	75	550	1000	150	3.0	10	125	3000	0.450	ES-1
IRKT 40	1200-2200	40	85	1.95	200	1000	1000	150	3.0	15	125	3000	0.330	ES-1
IRKT 57	1200-2200	55	85	1.65	200	1500	1000	150	3.0	15	125	3000	0.290	ES-1
IRKT 70	1200-2200	70	85	1.90	300	1600	1000	150	3.0	20	125	3000	0.290	ES-1
IRKT 97	1200-2200	95	85	1.65	200	4000	1000	150	3.0	20	125	3000	0.140	ES-1
IRKT 106	1200-2200	106	85	1.65	300	2250	1000	100	2.0	20	125	3000	0.140	ES-1
IRKT 130	1200-2200	130	85	1.80	500	4700	1000	150	2.0	40	125	3000	0.019	ES-1/ES-2
IRKT 162	1200-2200	156	85	1.60	500	5400	1000	150	2.0	40	125	3000	0.085	ES-2
IRKT 250	1200-2200	250	85	1.40	750	9000	1000	200	2.0	85	125	3000	0.07	ES-3
IRKT 330	1200-2200	305	85	1.40	750	9500	1000	200	3.0	85	125	3000	0.055	ES-3
IRKT 500	1200-2200	540	85	1.50	750	17000	1000	200	3.0	100	125	3000	0.055	ES-4
IRKT 570	1200-2200	570	85	1.44	750	19000	1000	200	3.0	100	125	3000	0.034	ES-4

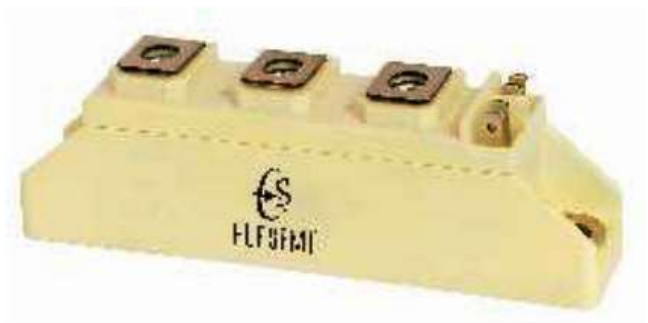
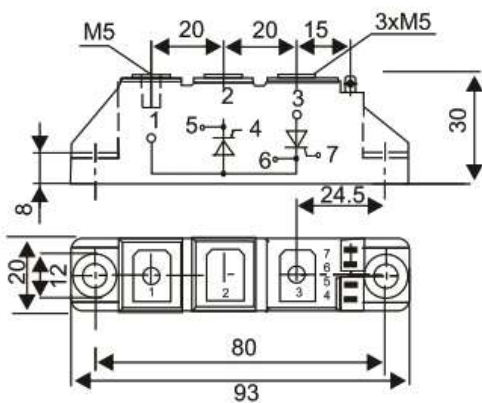
// THYRISTOR / DIODE //

Device Type	V _{RRM} / V _{VDRM} (V)	I _{T(AV)} (A)	T _c (°C)	V _{TM} (V)	I _{TM} (A)	I _{TSM} (A)	dv/dt (V/ms)	I _{GT} (mA)	V _{GT} (V)	I _{RRM} / I _{IDRM} (mA)	T _{VJ} (°C)	V _{ISOL} (V)	R _{th(j-a)} (°C/W)	Outline
IRKH 27	1200-2200	25	85	1.8	75	550	1000	150	3.0	10	125	3000	0.450	ES-1
IRKH 40	1200-2200	40	85	1.95	200	1000	1000	150	3.0	15	125	3000	0.330	ES-1
IRKH 57	1200-2200	55	85	1.65	200	1500	1000	150	3.0	15	125	3000	0.290	ES-1
IRKH 70	1200-2200	70	85	1.90	300	1600	1000	150	3.0	20	125	3000	0.290	ES-1
IRKH 97	1200-2200	95	85	1.65	200	4000	1000	150	3.0	20	125	3000	0.140	ES-1
IRKH 106	1200-2200	106	85	1.65	300	2250	1000	100	2.0	20	125	3000	0.140	ES-1
IRKH 130	1200-2200	130	85	1.80	500	4700	1000	150	2.0	40	125	3000	0.019	ES-1/ES-2
IRKH 162	1200-2200	156	85	1.60	500	5400	1000	150	2.0	40	125	3000	0.085	ES-2
IRKH 250	1200-2200	250	85	1.40	750	9000	1000	200	2.0	85	125	3000	0.07	ES-3
IRKH 330	1200-2200	305	85	1.40	750	9500	1000	200	3.0	85	125	3000	0.055	ES-3
IRKH 500	1200-2200	540	85	1.50	750	17000	1000	200	3.0	100	125	3000	0.055	ES-4

// DIODE / DIODE //

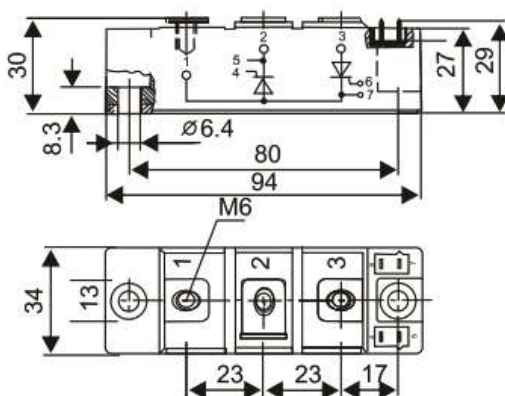
Device Type	V_{RRM} (V)	$I_{F(AV)}$ (A)	T_c (°C)	V_F (V)	I_F (A)	I_{FSM} (A)	I_{RRM} (mA)	T_{VJ} (°C)	V_{ISOL} (V)	$R_{th(j-a)}$ (°C/W)	Outline
IRKD 27	400-2200	31	85	1.35	75	550	3	125	3000	0.500	ES-1
IRKD 40	400-2200	47	85	1.95	250	700	3	125	3000	0.300	ES-1
IRKD 57	400-2200	60	100	1.50	150	1600	5	125	3000	0.500	ES-1
IRKD 70	400-2200	82	85	1.55	300	2000	5	125	3000	0.200	ES-1
IRKD 97	400-2200	100	100	1.45	300	2000	5	125	3000	0.350	ES-1
IRKD 106	400-2200	100	85	1.35	300	2500	5	125	3000	0.175	ES-1
IRKD 125	400-2200	125	85	1.50	300	6000	5	125	3000	0.175	ES-1
IRKD 162	400-2200	195	85	1.50	500	6000	9	125	3000	0.09	ES-2
IRKD 250	400-2200	260	85	1.25	750	11000	10	125	3000	0.07	ES-3
IRKD 330	400-2200	380	85	1.25	1000	11000	10	125	3000	0.055	ES-3
IRKD 500	400-2200	500	100	1.25	2000	25000	30	125	3000	0.034	ES-4

IRKT/IRKH/IRKD



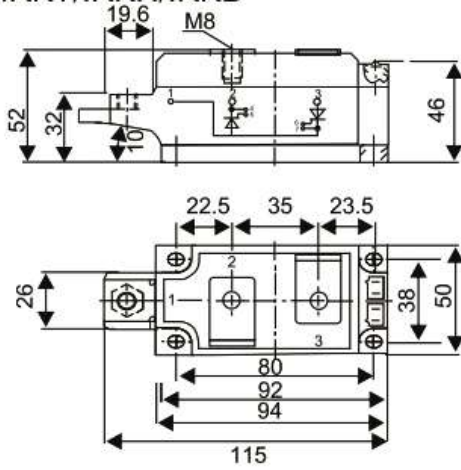
ES1

IRKT/IRKH/IRKD



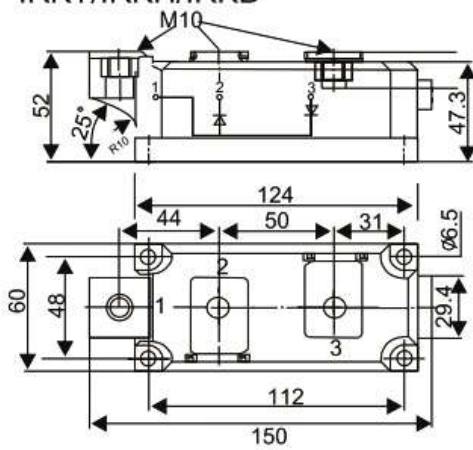
ES2

IRKT/IRKH/IRKD



ES 3

IRKT/IRKH/IRKD



ES 4