



ABOUT US

Energol Biopower®, established in 2013, has garnered an admirable reputation in the market for its manufacturing, supply, and distribution of an array of biomass-to-energy products.

The upward trend in LPG prices has notably impacted the confectionery industry in recent years. In response, biomass stoves have emerged as a preferable alternative, offering the dual benefits of being environmentally friendly and cost-effective.

Introducing the ESB-R Auto Bio-Mawa Machine: a pioneering solution for mawa production. Running on renewable biomass fuels, this innovative machine features an automated system along with a specialized Mawa Kettle and a smokeless 15-Inch Green-Magic15 Biomass Stove. Costing 60% less than diesel or LPG-based alternatives, it establishes a new standard for efficiency and sustainability in the industry.

ESB-R AUTO BIO-MAWA MACHINE



खर्चा आधा, काम ज्यादा!



+91-9414535665 / 7073495200

A STEP TOWARDS GREEN ENERGY





KEY FEATURES OF ESB-R MAWA MACHINE

The ESB-R Bio-Mawa Machine stands out in the market due to its array of unique features, offering advantages that set it apart from other available mawa machines:

- ✓ **Multipurpose Functionality:** With its 15-inch Green Magic15 smokeless biomass stove, the ESB-R machine serves a dual purpose, allowing users to prepare various dishes in addition to mawa.
- ✓ **Enhanced Efficiency:** Compared to steam boilers, the ESB-R machine boasts higher efficiency, ensuring optimal performance in mawa production.
- ✓ **Reliable and Compact Design.**
- ✓ **Low Maintenance and Ease of Operation.**
- ✓ **Accessibility:** Designed to cater to both urban and rural populations.
- ✓ **Fossil Fuel Replacement:** The ESB-R machine shifts from fossil fuels to renewable biomass, enhancing sustainability.
- ✓ **Environmental Conservation:** It minimizes deforestation and biomass consumption, bolstering environmental preservation.
- ✓ **Eco-Friendly Operation:** With minimal emissions and no soot, it supports sustainable practices and mitigates climate change.



60% more profitable
compared to LPG/diesel
mawa machines.

Return on investment
in 6 months.

Wood waste, cow dung
cakes, coal, or briquettes
can be used





TECHNICAL SPECIFICATIONS

Sr. No.	Parameter	Description
1.	Make	Enersol Biopower®
2.	Type of Kettle	Automatic
3.	Bottom Dia	25mm
4.	Top Dia	34inch
5.	Height	16inch
6.	Kettle body	Stainless Steel
7.	Gear Motor	1HP
8.	Mawa Machine Made of	Mild Steel (MS Sheet)

Model Name
**Bio-Mawa
Machine**

Model
Number
ESB-R/MM01

Kettle
Bottom
Thickness
25MM

Mawa
Machine Size
**H 6 x W4 x L4
(In Foot)**

Power
Required
1.1HP

Weight
**200kg
Approx.**





TECHNICAL SPECIFICATIONS

Sr. No.	Parameter	Description
1.	Kettle Capacity	140-150 liters at one time
2.	Maximum kettle capacity for boiling milk	70 liters of milk (50%)
3.	Maximum kettle capacity for making mawa	35 liters of milk (25%)
4.	Wood consumption to make mawa from 45 liters of milk	20-22 kilograms
5.	Time taken to make mawa from 45 liters of milk	Approximately one hour

ESB-R BIO-MAWA MACHINE





TECHNICAL SPECIFICATIONS

Sr. No.	Particulars	Details
1.	Model name	Green-Magic15
2.	Fuel	100% Biomass
3.	Biomass feeding mode	Manual
4.	Feeding system	Side feeding
5.	Material of construction	Mild Steel & Ceramic Bricks
6.	Power Required	100 Watt Blower
7.	Biomass consumption	12-25kg/hr.
8.	Heat generation	30000-62500Kcal/hr.
9.	Acceptable moisture in feedstock	Less than 20%
10.	Ash removal system	Manual
11.	Flame regulator	Given to control the flame
12.	Efficiency	35.5%
13.	Stove weight	190-200kg approx.
14.	चूल्हे का आयाम	ऊचाई 26 इंच & चौड़ाई 28 इंच

ESB-R GREEN-MAGIC15

15" Smokeless Biomass Stove



खर्चा आधा, काम ज्यादा!



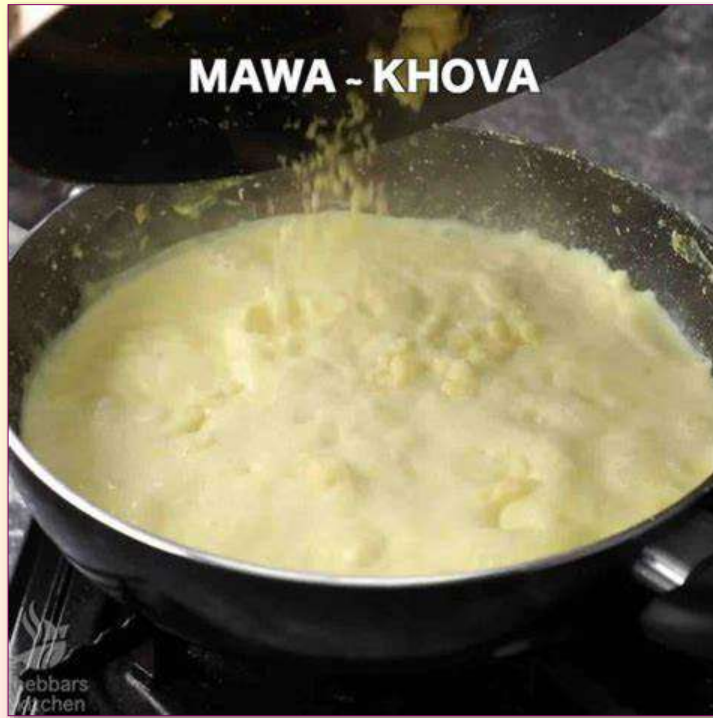
+91-9414535665 / 7073495200

A STEP TOWARDS GREEN ENERGY





APPLICATIONS



To prepare Mawa/Khoya



To prepare Samosa



To Prepare
Pakora & Snacks



To prepare Kachori



To prepare sweets



To prepare Jalebi



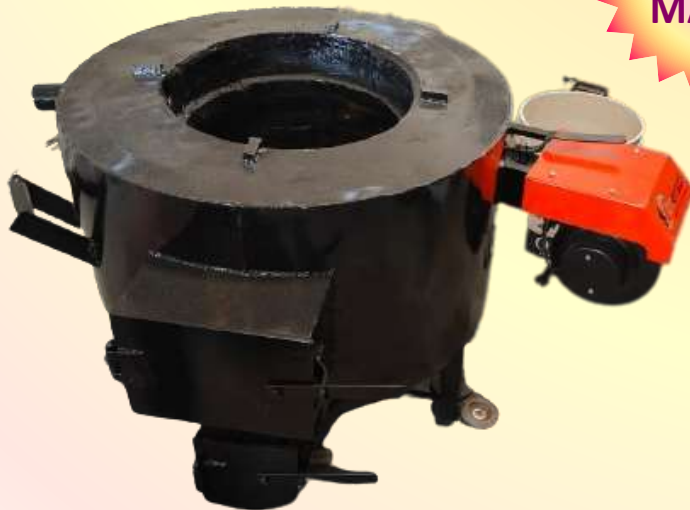
To prepare Poha





PICTURES OF MAWA MACHINE WITH GREEN MAGIC15

**ESB-R
GREEN-
MAGIC15**



**ESB-R
BIO-MAWA
MACHINE**





OUR PRODUCTS ON YOUTUBE

- ✓ <https://www.youtube.com/watch?v=7MVHph7NfkY>
- ✓ <https://www.youtube.com/watch?v=hoFHYyMAstY>
- ✓ <https://www.youtube.com/watch?v=-XmU5L6lytM>
- ✓ https://www.youtube.com/watch?v=-dsKwNdd_IY
- ✓ <https://www.youtube.com/watch?v=vY73UXW6aIM>

- ✓ <https://www.youtube.com/watch?v=FYPajsGRrrw>
- ✓ <https://www.youtube.com/watch?v=6cYUyY25OXE>
- ✓ <https://www.youtube.com/watch?v=qPXbaBs1cgU>
- ✓ <https://www.youtube.com/watch?v=qT4slGGJEfl>
- ✓ <https://www.youtube.com/shorts/L5d8YCauic>

- ✓ https://www.youtube.com/shorts/YdZkz_QbkLU
- ✓ <https://www.youtube.com/watch?v=LKDlbvXdHyM>
- ✓ <https://www.youtube.com/watch?v=PfQVa7wNUBU&t=33s>
- ✓ <https://www.youtube.com/watch?v=RjHPXigdAa8>
- ✓ <https://www.youtube.com/watch?v=7MVHph7NfkY&t=116s>
- ✓ <https://www.youtube.com/watch?v=LKDlbvXdHyM>

- ✓ <https://www.youtube.com/watch?v=5zYZ5I5zBfc>
- ✓ <https://www.youtube.com/watch?v=0AhISC5Dw00>
- ✓ https://www.youtube.com/watch?v=mkyeqDBI_2Y
- ✓ <https://www.youtube.com/watch?v=W9HXk2M-Mgw>
- ✓ <https://www.youtube.com/watch?v=l8NuflvOH4k>
- ✓ <https://www.youtube.com/watch?v=Rrp17MmDRilQ>





OUR PRESTIGIOUS PARTNERS

- ✓ Hari OM Sweets, Barmer, Rajasthan.
- ✓ Shankar Bikaner Misthan Bhandar, Ellenabad, Haryana.
- ✓ Hanuman Bikaner Sweet And Cold Drink, Akola, Maharashtra.
- ✓ Sankar Dairy And Bakery, Rewa, Madhya Pradesh.
- ✓ Bikaner Sweet And Namkeen, Ajmer, Rajasthan.
- ✓ Shri Balaji Misthan Bhandar, Karimnagar, Telangana.
- ✓ Jagdamba Bikaner Sweet, Raipur, Chhattisgarh.
- ✓ Devraj Sweet Home, Pali, Rajasthan.
- ✓ Radhe Krishan Misthan Bhandar, Chittorgarh, Rajasthan.
- ✓ Pankaj Pareek, Aheri, Maharashtra.
- ✓ Keshrinandan, Aheri, Assam.
- ✓ Satyanarayan Misthan Bhandar, Rajsamand, Rajasthan
- ✓ Arihant Chat & Sweets, Ajmer, Rajasthan.
- ✓ Utasav Sweets, Kankroli, Rajasthan.
- ✓ Balaji Resgulla Plant, Haryana.
- ✓ Buddhi Prasad, Khetri, Rajasthan.





OUR PRODUCTS SOLD IN INDIA

- ✓ Jammu & Kashmir
- ✓ Himachal Pradesh
- ✓ Chandigarh
- ✓ Punjab
- ✓ Uttarakhand
- ✓ Haryana
- ✓ Delhi
- ✓ Rajasthan
- ✓ Uttar Pradesh
- ✓ Gujarat
- ✓ Madhya Pradesh
- ✓ Chhattisgarh
- ✓ Maharashtra
- ✓ Telangana
- ✓ Pondicherry
- ✓ Tamil Nadu
- ✓ Kerala
- ✓ Jharkhand
- ✓ West Bengal
- ✓ Sikkim
- ✓ Meghalaya
- ✓ Assam
- ✓ Bihar
- ✓ Arunachal Pradesh
- ✓ Orissa
- ✓ Goa
- ✓ Karnataka
- ✓ Andhra Pradesh



+91-9414535665 / 7073495200

A STEP TOWARDS GREEN ENERGY





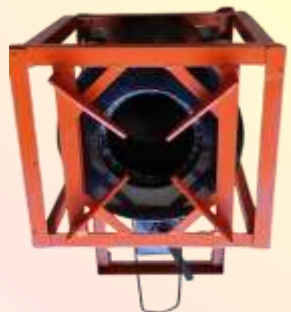
ESB-R BIOMASS STOVES



**ESB-R
Bio-Nature**



**ESB-R
Bio-Mini**



**ESB-R
Green-Agnika10**



**ESB-R
Harit-Agni12**



**ESB-R
Green-Magic15**



**ESB-R
Bio-Virat18**



**ESB-R
Bio-Akash21**



**ESB-R
Bio-Prithvi24**



**ESB-R
Harit-Jumbo27**



**ESB-R
Jumbo-Shakti36**





OUR PRODUCTS



**Automaking Roti
Making Machine**



**Portable Biomass
Gasifier**



**Biomass
Torrefaction Plant
(Charcoal Plant)**



**Used Oil
Recycling Plant**



**Biomass based
Automatic
Mawa-Machine**



**Roti Maker
Biomass Stove**



Biogas Generator



**Biomass Briquette
Pellet Machine**



**Wood Cutter /
Biomass Shredder**



**Multi-Purpose
Food Processing
Machine**





AWARDS

- ✓ Fifth National Grassroots Innovation Award, 2009.
- ✓ Innovation Scholars In-residence Program At President House.
- ✓ Indian Merchant Chamber (IMC) – Inclusive Innovation Award, 2012.
- ✓ Certificate of Appreciation As “Farmer Scientist” By Rajasthan University of Veterinary & Animal Sciences, Bikaner, Rajasthan.
- ✓ Certificate of “Farmer Scientist” By Pacific University, Udaipur, Rajasthan.
- ✓ Certificate From Department of Science & Technology At National Science Day, Jaipur, Rajasthan.
- ✓ Business Expo Kota 2023, Kota, Rajasthan.





EXHIBITION

- ✓ Exhibition of Innovations, President House, 2010
- ✓ Inauguration of ESB-R Biomass gasifier by former chief minister of Meghalaya, 2013
- ✓ Third international conference on creativity & innovations at grassroots at Indian institute of management (IIM), Ahmedabad, 2015
- ✓ Exhibition of innovations, President House, 2015
- ✓ India International Science Festival (IISF), New Delhi, 2016.
- ✓ India International Trade Fair (IITF), New Delhi, 2016.
- ✓ Mega Science & Technology and Industry Expo, New Delhi, 2017
- ✓ Bollywood movie Padman promotion, 2018.





CONNECT US



<https://www.youtube.com/@enersolbiopower-biomassgas3987>



<https://www.indiamart.com/enersol-biopower-jaipur/profile.html>



<https://twitter.com/EnersolBiopower>



<https://www.linkedin.com/company/enersol-biopower-pvt-ltd>



<https://www.instagram.com/enersolbiopower/>

CONTACT US

Address:

Enersol Biopower Pvt. Ltd.

Plot No.-57A,Vrindavan Vihar,
Akeda Dunder, Laxminarayanpura,
Vishwakarma Industrial Area (VKI),
Road No.-19, Jaipur- 302013 (Rajasthan)

Mobile Nos.:

+91-9414535665
+91-7073495200
+91-9610103127

Email IDs:

info@enersolbiopower.com
gayatri@enersolbiopower.com
raj@enersolbiopower.com

Websites:

www.enersolbiopower.com
www.enersolbiopower.co.in



+91-9414535665 / 7073495200

A STEP TOWARDS GREEN ENERGY

