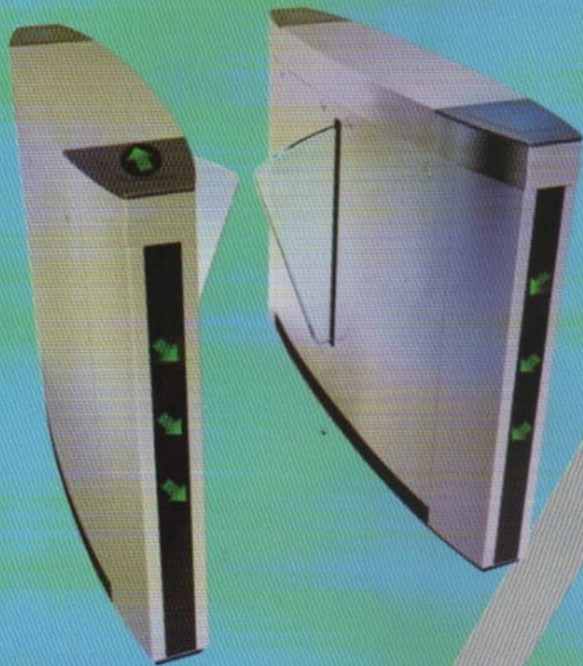


MOSFi TM 

PATRON F.BARRIERS



BOLT SERIES



VOLKER FLAP BARRIER



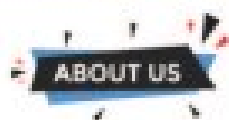
STANDARD FLAP BARRIER



www.alaskagroup.in | sales@alaskagroup.in
India's No.1 Manufacturer of Entrance Automation Product



INDIA'S NO.1 MANUFACTURER OF ENTRANCE AUTOMATION & SECURITY PRODUCTS



At Mosfi, we are proud to be a leading Manufacturer, Importer, Distributor, and Service Provider specializing in security and automation products since 2013. With a strong presence in the global market for years, our reputation is built on innovative solutions, uncompromising quality, and outstanding customer support.



Empowering "Make in India": We are committed to producing good quality products under the renowned Mosfi brand.

Delivering Long-term Value: We aim to provide reliable and sustainable solutions by offering original spares for up to 10 years for selected models, ensuring the longevity of our products.

Expanding Market Presence: With a network of support across major cities in India, we ensure that quality security solutions are always within reach, wherever they're needed.



Our vision is to be a performance-driven organization that thrives on innovation and customer satisfaction. We are committed to upholding unparalleled service standards, offering exceptional support and technical expertise. By continuously developing a comprehensive portfolio of products, we aim to meet the growing demands of the market and deliver value-added solutions to our clients.



Comprehensive Product Range: We offer a wide array of security and automation solutions to meet diverse needs.

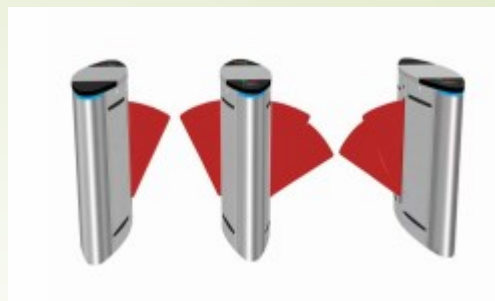
Unmatched After-Sales Service: Our after-sales support and backup services are among the best in the industry, ensuring complete customer satisfaction.

Trusted by Prestigious Clients: Our association with some of India's most respected organizations, including Ram Mandir Ayodhya, Centra Vista, Indian Army, Navy, Air Force, BARC, BEL, Adani, Samsung, L&T, Yashobhumi, and many more, attests to the trust and credibility we've earned over the years.



Technical Specification Retractable Flap :- WIDER 201

Model	WIDER 201
Ddimension & Barrier Material	980H*420W*330MM,(+-10%) SS 304 Thickness Of Sheet 1.0 mm
Operating Time	2.5 Sec
Passage Width	<600mm
Passage Speed	40 Person/Min
Operiting Direction	Unidirectional /BI Directional
Arm Movement	Swing (Single Side)
Led Indicator	Provided On Body
Flap Material	PCB
Comp Name & Logo	On Flap (Optional)
Motor Type	24 V DC Brushless
AC Input Voltage	AC- - / 220V+-10% 50-60 HZ
AC Input Power	30-60 W
Opening Mode	Dry Contact Signal
Safety Functions	Anti Collission, Anti Pinch Illegal Intrusion Alarm Self Test Function Infrared Quantity 3 Pcs
Alerts	Voice And Strobe
Operating Mode	Smart Cards, Face Recognition, Biometric, Push Button, Remote
Power Faiilure	Unblock Automatically During Power Failure
IP Degree	IP 44
Opening Noise	<-30 db.
MCBF	2 Million
Working Environment	Indoor / Outdoor (If Sheltered
Operating Temp	-10 To 60 DEG
Humidity	<95%



Our Other Product

Manual/Portable Tyre Killer, One Way Tyre Killer, Automatic Tyre Killer, Hydraulic Bollard, Fix Bollard, Automatic Road Blocker, Under Vehicle Surveillance System, UVSM, Convex Mirror, Boom Barrier, Boom Arm, Flap Barrier, Swing Barrier, Handicap Barrier, Tripod Turnstile, High Speed Door, Automatic Retractable Gate, FHST, Glass Sliding Door Motor, Glass Revolving Door, Swing Gate Motor, Sliding Gate Motor, High Speed Motor, DFMD, HHMD, Baggage scanner, Dock Leveller, Police Barricade, Access Control, Sensor, Software.

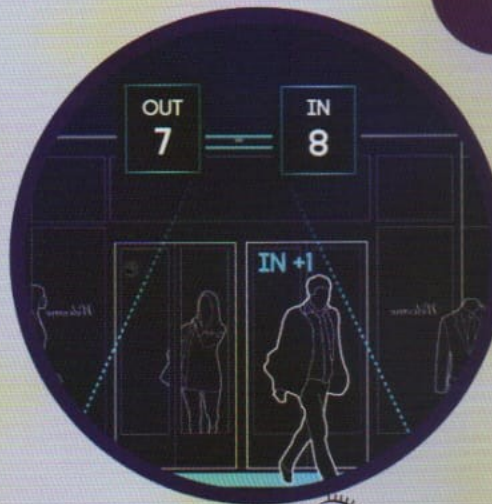
SOFTWARE & ACCESS MANAGEMENT SOLUTION



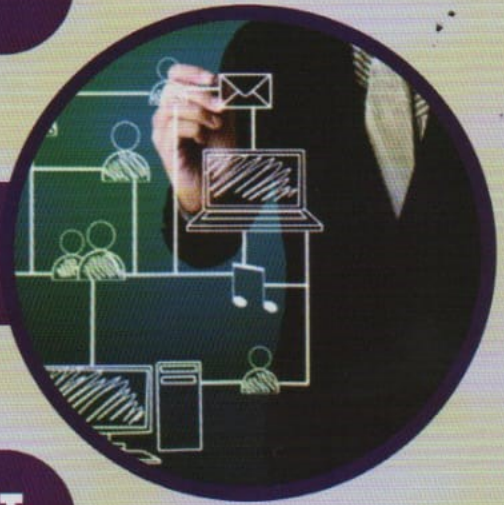
**BAR CODE/QR CODE
MOBILE**



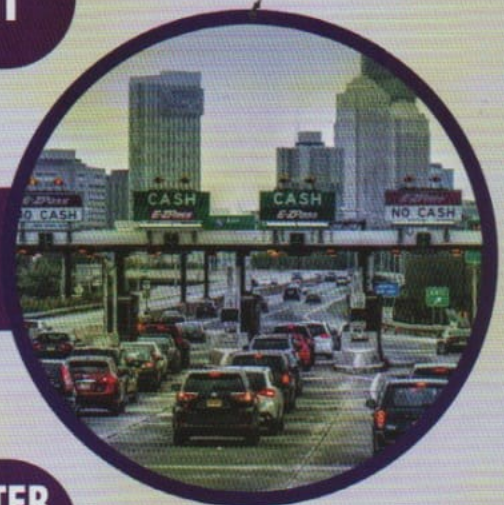
GYM/CLUB/EVENT



**OCCUPANCY & COUNTER
SYSTEM**



VISITOR



TOLL/PARKING

MOSFiTM

www.alaskagroup.in | sales@alaskagroup.in

©Copyright2017 Mosfi Logo and Designs are Subject to Registered Trademark and Patent of Alaska Automation Pvt. Ltd. or Related Companies
All Specifications / Images are subject to change without Notice. All right reserved.