

kds PUMPS

- the heart of Industry



 **One Stop
Pumping Solution...**





KMH



KM

Introduction

KMH and KM are kind of non-self priming Horizontal Multistage Centrifugal Pumps, attached with long shaft electric motor. Compact structure renders small size of pump; axial inlet and radial outlet.

FEATURE

- Tremendously improved performance and enhance product life due to adoption of excellent water power model and advanced making techniques.
- Applied to slightly corrosive medium due to flow passage parts made of stainless steel after process of pressing and welding.
- Compact structure, small size, light in weight, low noise, remarkable energy saving, easy for overhaul and maintenance.
- To avoid damages from dry rotation, lack of electric phase, over-load etc because aptitude protector can be equipped on user's request.
- Axial inlet and radial outlet, attached with long shaft electric motor.

APPLICATION

- Air-conditioning system
- Industrial cleaning
- Agriculture
- Environmental application
- Cooling System
- Water treatment (Water purification)
- Fertilizing / metering system
- Other special applications

WORKING CONDITION

- Medium temperature: normal type: 0°C ~ +68°C, hot water type: 0°C ~ + 103°C
- Max ambient temperature: +40°C
- Max ambient pressure: 10bar.
- Advisable to use motor of higher power in case that the density or viscosity of medium is above that of water.

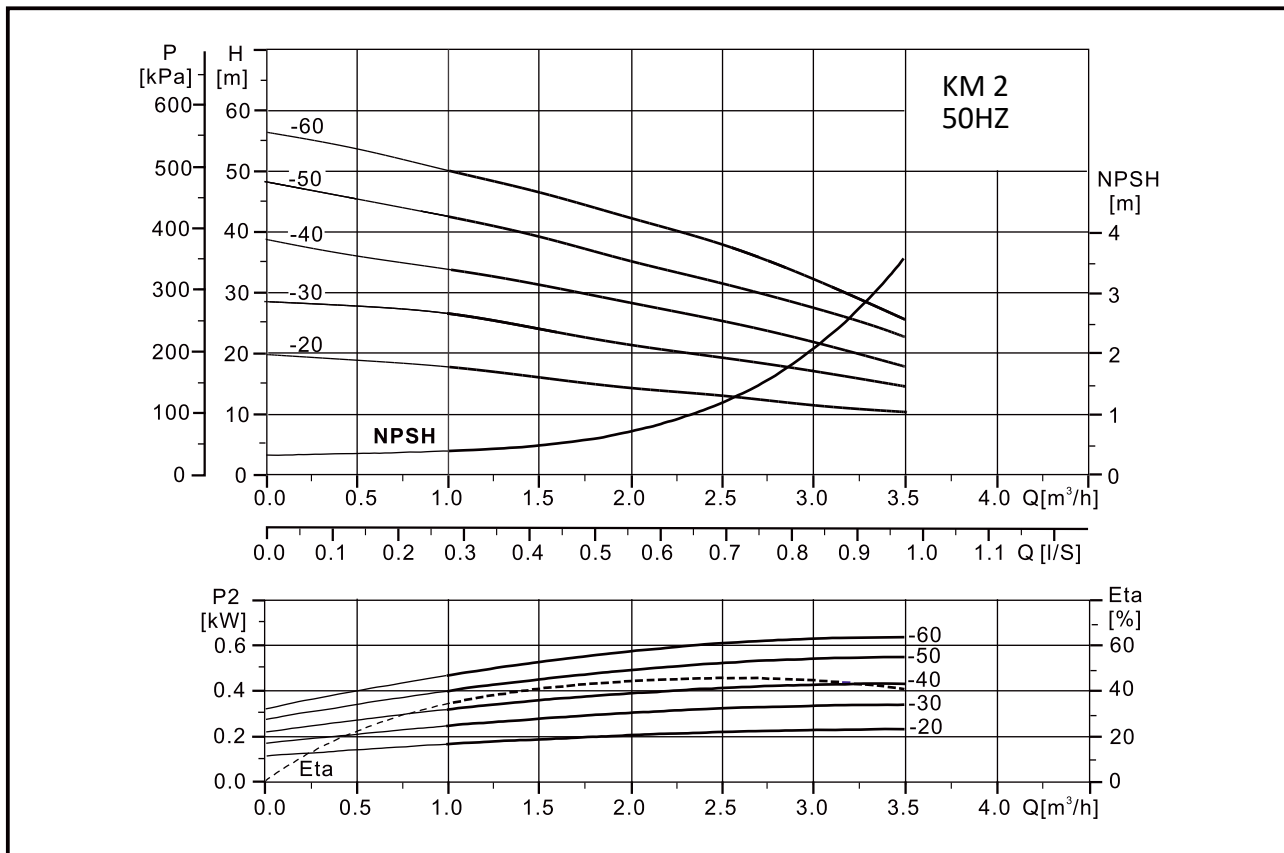
MEDIUM

- Thin, Clean, non-flammable, non-explosive medium containing no granule or fibre.
- Such as mineral water, softened water, pure water, clean oil and other light chemical medium.
- Slight corrosive medium.
- Advisable to use motor of higher power in case that the density or viscosity of medium is above that of water.

MOTOR

- Full-enclosed and ventilating two-pole standard motor
- Protection class: IP55
- Insulation class: F
- Standard voltage (50Hz): single phase 220V
- Standard voltage (60Hz): single phase 220 ~ 240V
- Three-phase 220V/380V
- Three-phase 220 ~ 240V/380V

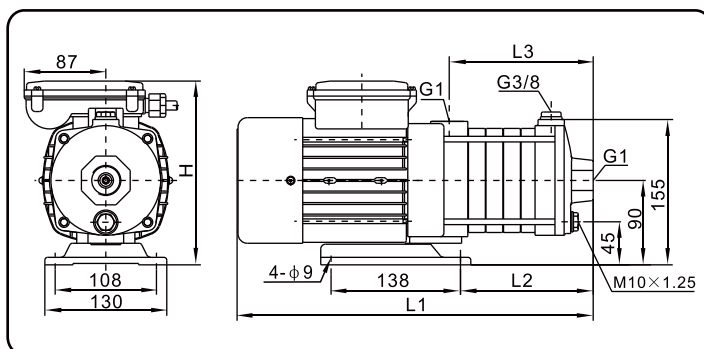
Performance curve



Performance table

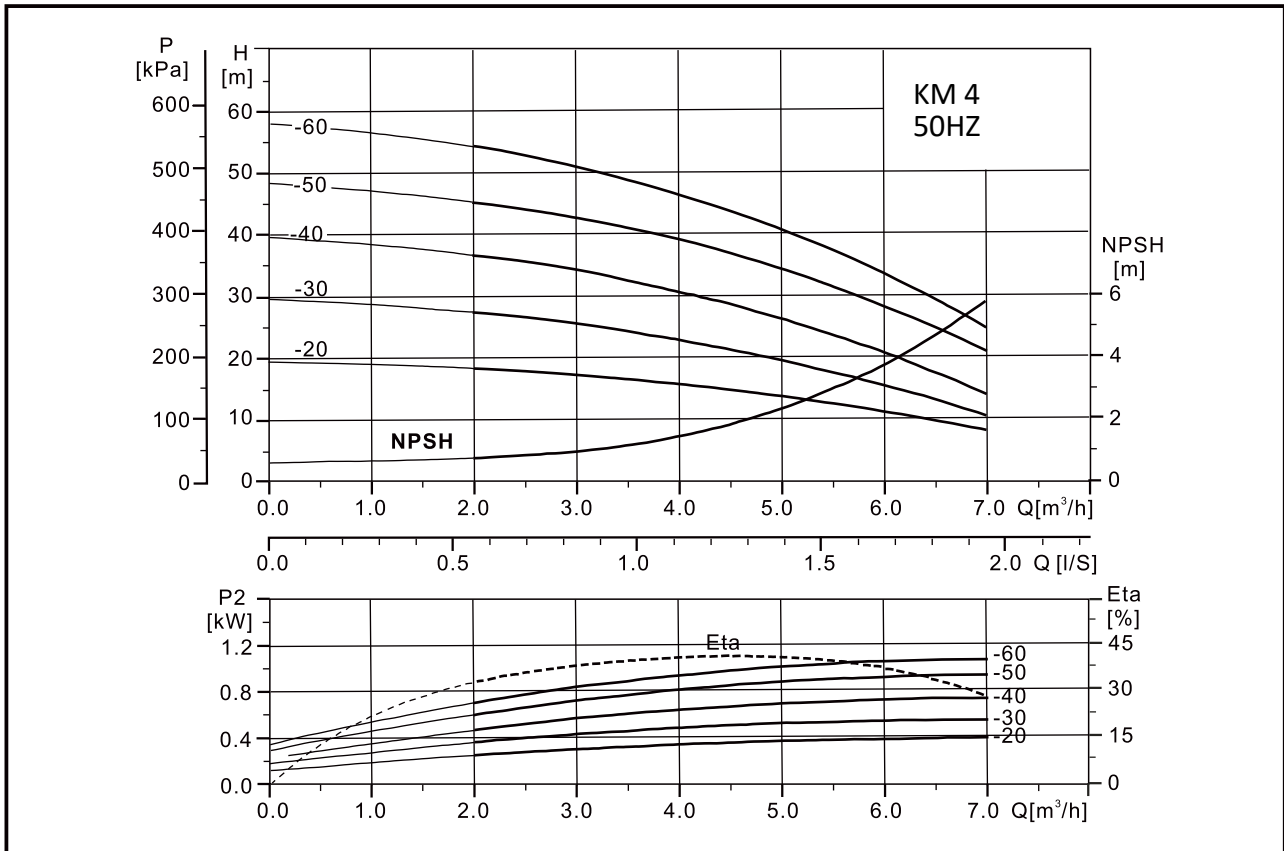
| Modal | | Driving Moter | Q (m3/h) | H (m) | | | | | |
|--------------|-------------|---------------|----------|-------|-----|----|-----|----|-----|
| Single Phase | Three Phase | | | 1 | 1.5 | 2 | 2.5 | 3 | 3.5 |
| KM 2-20 | KM 2-20T | 0.37 | H (m) | 18 | 16 | 14 | 13 | 11 | 10 |
| KM 2-30 | KM 2-30T | 0.37 | | 27 | 24 | 21 | 20 | 17 | 14 |
| KM 2-40 | KM 2-40T | 0.55 | | 35 | 32 | 28 | 26 | 23 | 17 |
| KM 2-50 | KM 2-50T | 0.55 | | 43 | 40 | 35 | 33 | 28 | 22 |
| KM 2-60 | KM 2-60T | 0.75 | | 50 | 48 | 42 | 38 | 32 | 25 |

Installation sketch



| Model | Size(mm) | | | | | | | | Weight (kg) |
|------------|--------------|-----|-----|-----|-------------|-----|-----|-----|-------------|
| | Single-Phase | | | | Three-Phase | | | | |
| | L1 | L2 | L3 | H | L1 | L2 | L3 | H | |
| KM 2-20(T) | 326 | 70 | 104 | 198 | 326 | 70 | 104 | 194 | 8.5 |
| KM 2-30(T) | 344 | 88 | 122 | 198 | 344 | 88 | 122 | 194 | 9 |
| KM 2-40(T) | 362 | 106 | 140 | 198 | 362 | 106 | 140 | 194 | 9.5 |
| KM 2-50(T) | 380 | 124 | 158 | 198 | 380 | 124 | 158 | 194 | 10 |
| KM 2-60(T) | 398 | 142 | 176 | 198 | 398 | 142 | 176 | 194 | 10.5 |

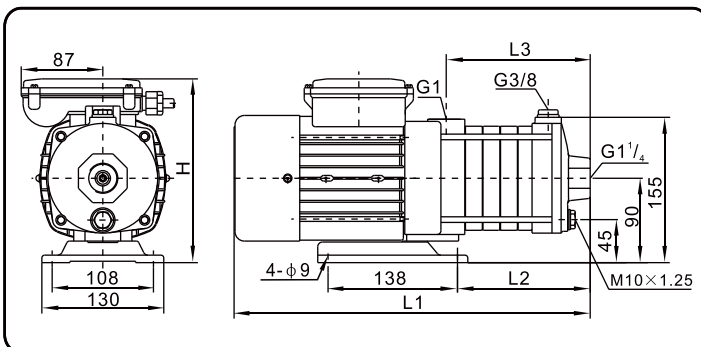
Performance curve



Performance table

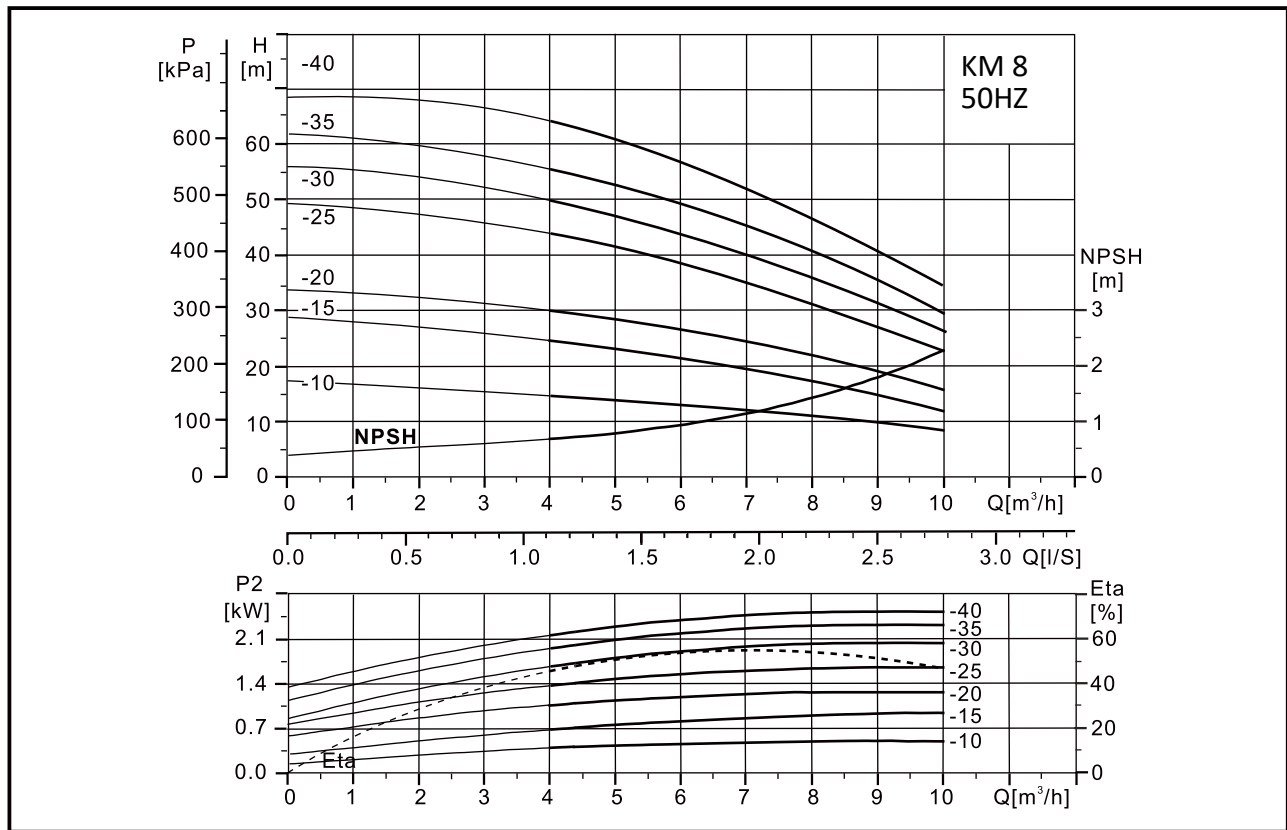
| MODAL | | DRIVING MOTOR P2 | Q (m3/h) | H(m) | | | | | |
|--------------|-------------|------------------|----------|------|----|----|----|----|---|
| SINGLE PHASE | THREE PHASE | | | 2 | 3 | 4 | 5 | 6 | 7 |
| KM 4-20 | KM 4-20 | 0.55 | 18 | 16 | 15 | 13 | 10 | 7 | |
| KM 4-30 | KM 4-30 | 0.75 | 27 | 25 | 22 | 19 | 15 | 10 | |
| KM 4-40 | KM 4-40 | 0.75 | 36 | 33 | 30 | 26 | 20 | 13 | |
| KM 4-50 | KM 4-50 | 1 | 44 | 41 | 38 | 32 | 26 | 20 | |
| KM 4-60 | KM 4-60 | 1.1 | 53 | 50 | 45 | 40 | 33 | 24 | |

Installation sketch



| Model | Size(mm) | | | | | | | | Weight (kg) |
|------------|--------------|-----|-----|-----|-------------|-----|-----|-----|-------------|
| | Single-Phase | | | | Three-Phase | | | | |
| | L1 | L2 | L3 | H | L1 | L2 | L3 | H | |
| KM 4-20(T) | 335 | 79 | 113 | 198 | 335 | 79 | 113 | 194 | 9 |
| KM 4-30(T) | 362 | 106 | 140 | 198 | 362 | 106 | 140 | 194 | 10 |
| KM 4-40(T) | 389 | 133 | 167 | 198 | 389 | 133 | 167 | 194 | 10.5 |
| KM 4-50(T) | 416 | 160 | 194 | 198 | 416 | 160 | 194 | 194 | 11 |
| KM 4-60(T) | 443 | 187 | 221 | 198 | 443 | 187 | 221 | 194 | 12 |

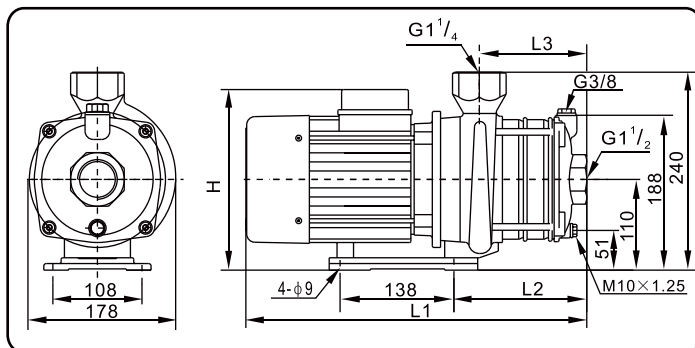
Performance curve



Performance table

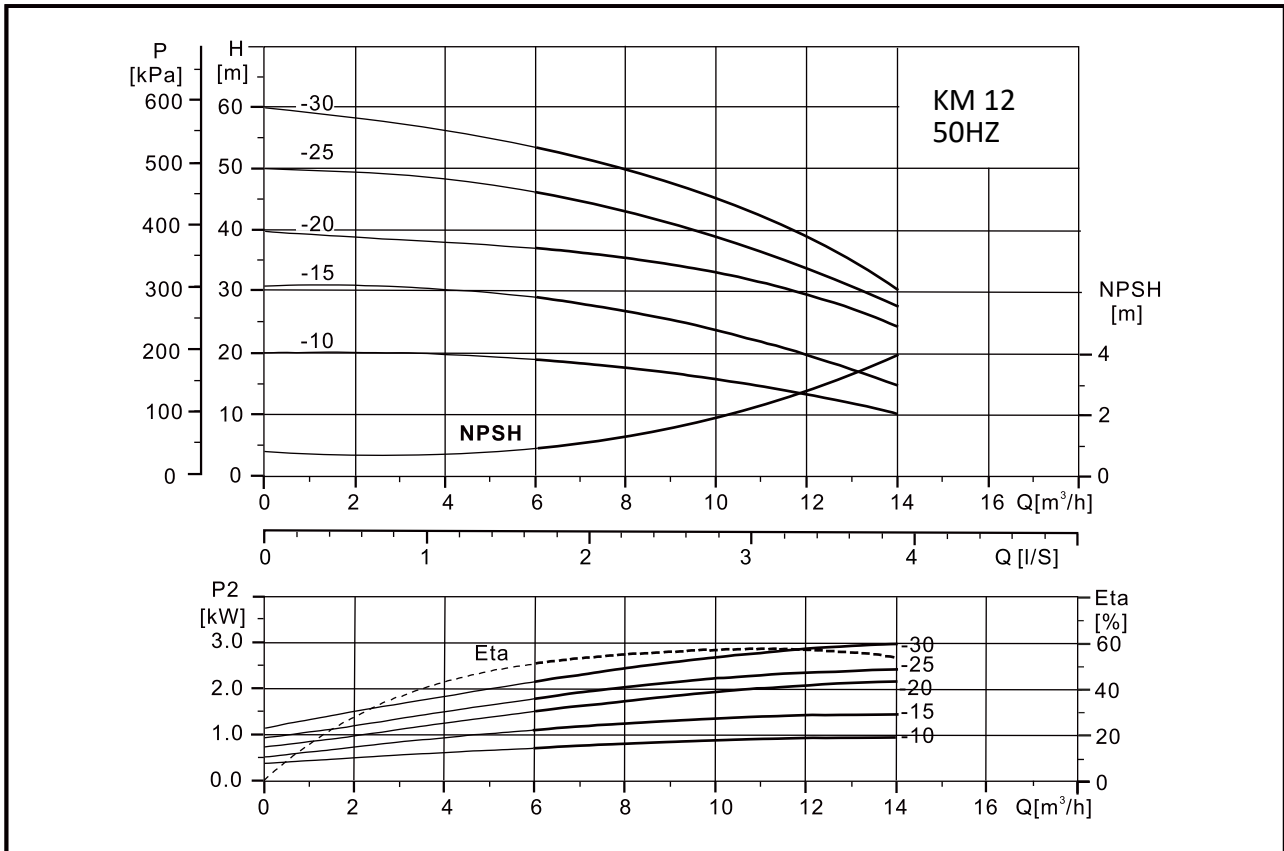
| Modal | | Driving Moter | Q (m3/h) | H (m) | | | | | | |
|--------------|-------------|---------------|----------|-------|----|------|----|----|----|----|
| Single Phase | Three Phase | | | 4 | 5 | 6 | 7 | 8 | 9 | 10 |
| KM 8-10 | KM 8-10T | 0.55 | 15 | 14 | 13 | 12.5 | 12 | 9 | 8 | |
| KM 8-15 | KM 8-15T | 0.75 | 25 | 23 | 22 | 20 | 20 | 14 | 12 | |
| KM 8-20 | KM 8-20T | 1 | 32 | 29 | 27 | 25 | 24 | 21 | 17 | |
| KM 8-25 | KM 8-25T | 1.5 | 43 | 40 | 38 | 34 | 27 | 25 | 20 | |
| KM 8-30 | KM 8-30T | 1.85 | 45 | 43 | 40 | 35 | 30 | 29 | 22 | |
| KM 8-35 | KM 8-35T | 2.2 | 56 | 51 | 48 | 44 | 43 | 35 | 28 | |
| KM 8-40 | KM 8-40T | 2.2 | 65 | 57.5 | 57 | 50 | 48 | 42 | 34 | |

Installation sketch



| Model | Size(mm) | | | | | | | | Weight (kg) |
|------------|--------------|-----|-----|-----|-------------|-----|-----|-----|-------------|
| | Single-Phase | | | | Three-Phase | | | | |
| | L1 | L2 | L3 | H | L1 | L2 | L3 | H | |
| KM 8-10(T) | 328 | 73 | 78 | 235 | 328 | 73 | 78 | 214 | 13 |
| KM 8-15(T) | 358 | 103 | 108 | 235 | 358 | 103 | 108 | 214 | 15 |
| KM 8-20(T) | 358 | 103 | 108 | 235 | 358 | 103 | 108 | 214 | 18 |
| KM 8-25(T) | 426 | 133 | 138 | 244 | 426 | 133 | 138 | 222 | 20 |
| KM 8-30(T) | 468 | 133 | 138 | 230 | 426 | 133 | 138 | 222 | 25 |
| KM 8-35(T) | 500 | 163 | 168 | 230 | 456 | 163 | 168 | 222 | 30 |
| KM 8-40(T) | 500 | 163 | 168 | 230 | 456 | 163 | 168 | 222 | 31 |

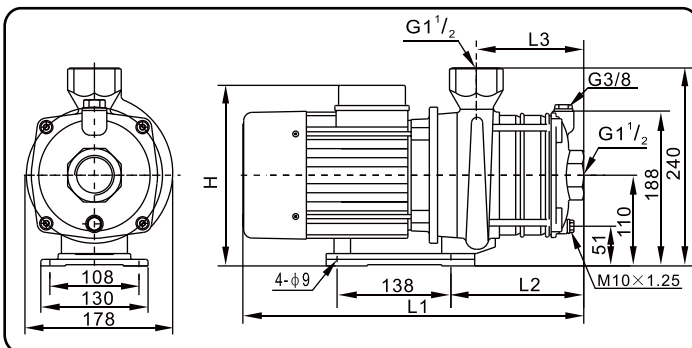
Performance curve



Performance table

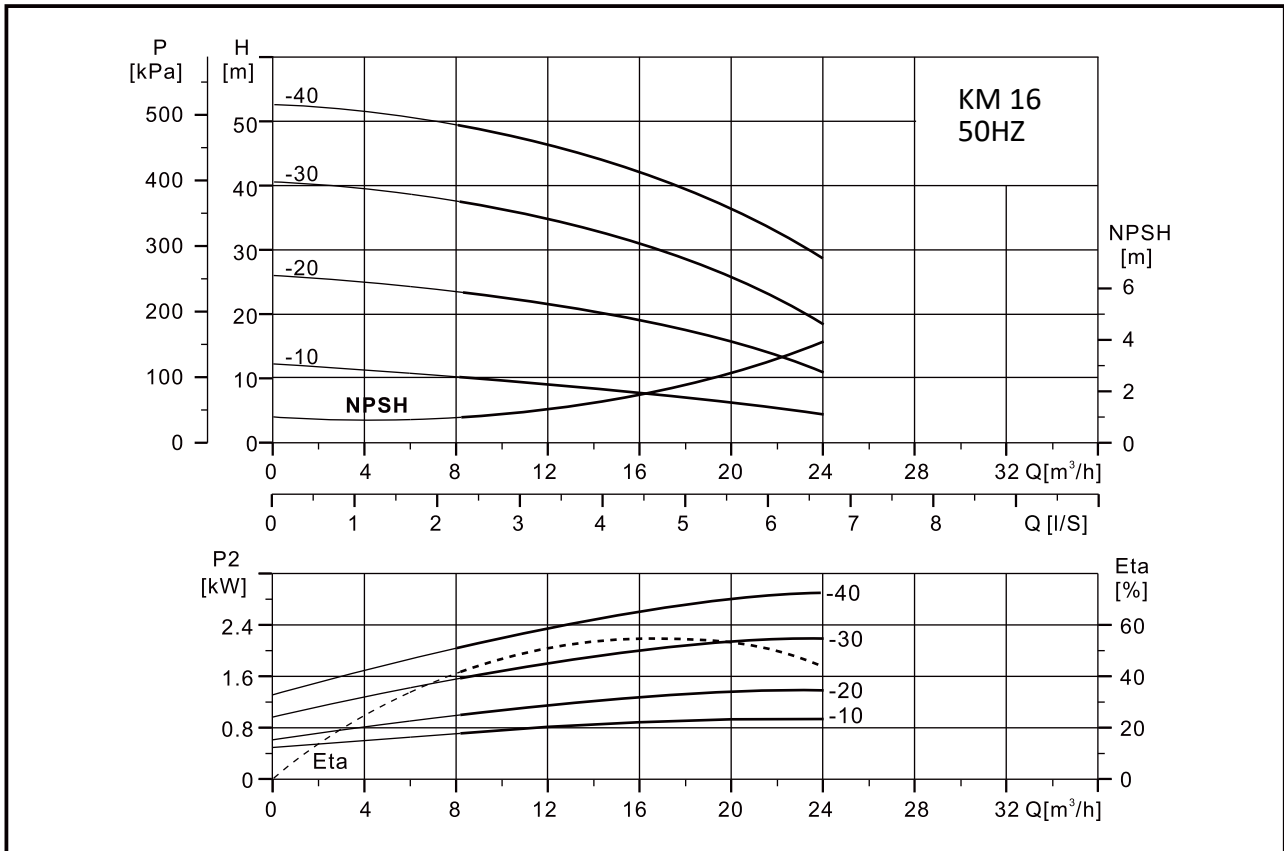
| MODEL | | KW | m3/hr | H [m] | | | | | | | | | |
|--------------|-------------|------|-------|-------|----|------|------|------|----|------|------|------|--|
| SINGLE PHASE | THREE PHASE | | | 6 | 7 | 8 | 9 | 10 | 11 | 12 | 13 | 14 | |
| KM12-10 | KM12-10 | 1 | | 19 | 18 | 17.5 | 16 | 15.5 | 14 | 13.5 | 12 | 10.5 | |
| KM12-15 | KM12-15 | 1.5 | | 28 | 27 | 26 | 25 | 24 | 22 | 20 | 18 | 15 | |
| KM12-20 | KM12-20 | 1.85 | | 38 | 36 | 35 | 32 | 31 | 29 | 28 | 24 | 20 | |
| KM12-25 | KM12-25 | 2.2 | | 47 | 45 | 43 | 41.5 | 39 | 36 | 33.5 | 30.5 | 27 | |
| | KM12-30 | 3 | | 53.5 | 52 | 50 | 47.5 | 45 | 42 | 39 | 35 | 30 | |

Installation sketch



| Model | Size(mm) | | | | | | | | Weight (kg) |
|-------------|--------------|-----|-----|-----|-------------|-----|-----|-----|-------------|
| | Single-Phase | | | | Three-Phase | | | | |
| | L1 | L2 | L3 | H | L1 | L2 | L3 | H | |
| KM 12-10(T) | 328 | 73 | 78 | 235 | 328 | 73 | 78 | 214 | 15 |
| KM 12-15(T) | 395 | 103 | 108 | 244 | 395 | 103 | 108 | 222 | 18 |
| KM 12-20(T) | 436 | 103 | 108 | 230 | 395 | 103 | 108 | 222 | 20 |
| KM 12-25(T) | 468 | 133 | 138 | 230 | 426 | 133 | 138 | 222 | 24 |
| KM 12-30T | - | - | - | - | 485 | 133 | 138 | 230 | 27 |

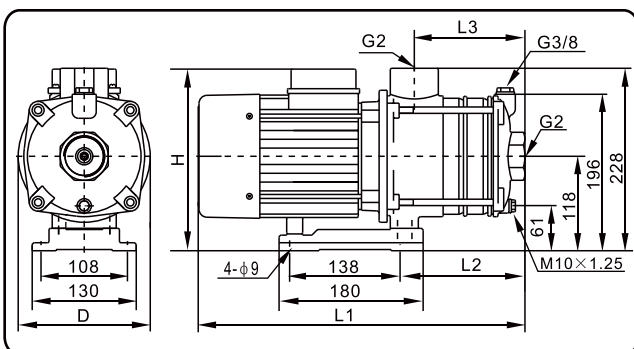
Performance curve



Performance table

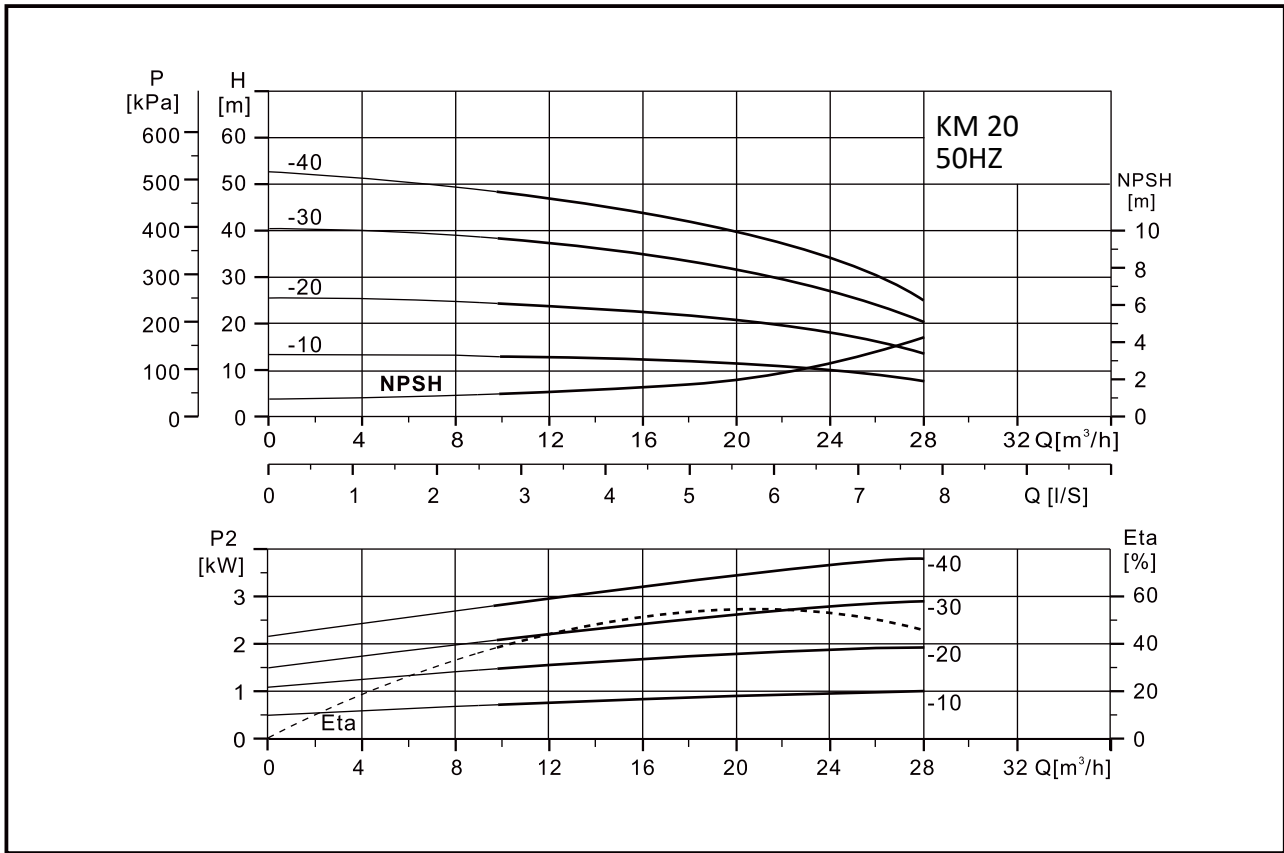
| Modal | | Driving Moter p_2 (kW) | Q (m ³ /h) | 8 | 10 | 12 | 14 | 16 | 18 | 20 | 22 | 24 |
|--------------|-------------|--------------------------|-----------------------|-------|------|----|------|----|----|----|----|----|
| Single Phase | Three Phase | | | H (m) | | | | | | | | |
| KM 16-10 | KM 16-10T | 1 | | 12 | 11.5 | 11 | 10.5 | 10 | 9 | 8 | 7 | 6 |
| KM 16-20 | KM 16-20T | 1.5 | | 24 | 23 | 22 | 21 | 20 | 19 | 16 | 14 | 12 |
| KM 16-30 | KM 16-30T | 2.2 | | 38 | 36 | 34 | 33 | 30 | 28 | 26 | 23 | 20 |
| KM 16-40 | KM 16-40T | | | 50 | 48 | 46 | 44 | 40 | 38 | 36 | 32 | 28 |

Installation sketch



| Model | Size(mm) | | | | | | | | | | Weight (kg) |
|-------------|----------|-----|-----|-----|-----|-----|-----|-----|-----|-----|-------------|
| | L | L2 | L3 | H | D | L | L2 | L3 | H | D | |
| KM 16-10(T) | 325 | 106 | 81 | 244 | 165 | 325 | 106 | 81 | 218 | 165 | 14 |
| KM 16-20(T) | 406 | 151 | 126 | 254 | 165 | 406 | 151 | 126 | 228 | 165 | 20 |
| KM 16-30(T) | 493 | 196 | 171 | 235 | 176 | 493 | 196 | 171 | 235 | 176 | 27 |
| KM 16-40(T) | - | - | - | - | - | 555 | 241 | 216 | 235 | 176 | 30 |

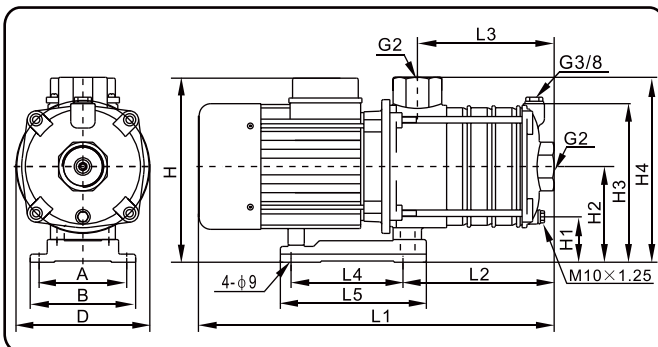
Performance curve



Performance table

| Model | | Driving Moter P ₂ (kW) | Q (m ³ /h) | 10 | 12 | 14 | 16 | 18 | 20 | 22 | 24 | 26 | 28 |
|--------------|-------------|--------------------------------------|--------------------------|-------|------|----|------|----|------|----|----|-----|-----|
| Single Phase | Three Phase | | | H (m) | | | | | | | | | |
| KM 20-10 | KM 20-10T | 1 | | 13 | 12.5 | 12 | 11.5 | 11 | 10.5 | 10 | 9 | 8.5 | 7.5 |
| KM 20-20 | KM 20-20T | 1.85 | | 25 | 24 | 23 | 22 | 21 | 20 | 18 | 16 | 14 | 12 |
| KM 20-30 | KM 20-30T | 3 | | 39 | 38 | 36 | 35 | 33 | 31.5 | 30 | 27 | 24 | 21 |
| KM 20-40 | KM 20-40T | 4 | | 50 | 48 | 46 | 44 | 42 | 40 | 36 | 32 | 28 | 24 |

Installation sketch



| Model | Size(mm) | | | | | | | | | | | | | Weight (kg) |
|-----------|----------|-----|-----|-----|-----|-----|----|-----|-----|-----|-----|-----|-----|----------------|
| | L1 | L2 | L3 | L4 | L5 | H | H1 | H2 | H3 | H4 | A | B | D | |
| KM 20-10 | 325 | 106 | 81 | 138 | 180 | 244 | 61 | 118 | 196 | 228 | 108 | 130 | 165 | 16 |
| KM 20-20 | 450 | 151 | 126 | 138 | 180 | 235 | 61 | 118 | 196 | 228 | 108 | 130 | 176 | 26 |
| KM 20-10T | 325 | 106 | 81 | 138 | 180 | 218 | 61 | 118 | 196 | 228 | 108 | 130 | 165 | 15.5 |
| KM 20-20T | 406 | 151 | 126 | 138 | 180 | 228 | 61 | 118 | 196 | 228 | 108 | 130 | 165 | 25.5 |
| KM 20-30T | 510 | 196 | 171 | 138 | 180 | 235 | 61 | 118 | 196 | 228 | 108 | 130 | 176 | 30 |
| KM 20-40T | 575 | 316 | 216 | 140 | 175 | 248 | 43 | 100 | 178 | 210 | 160 | 200 | 195 | 35 |