

kds PUMPS

- the heart of Industry



 **One Stop Pumping Solution...**



KLC SERIES



Features

- ◆ Overflow parts and shaft are made of stainless steel (304 or 316);
- ◆ Volute pump body adopts liquid bulging technology, high efficiency, compact and firm.
- ◆ Mechanical shaft seal, safe and reliable.
- ◆ Single phase motor is equipped with USA TI thermal protector.

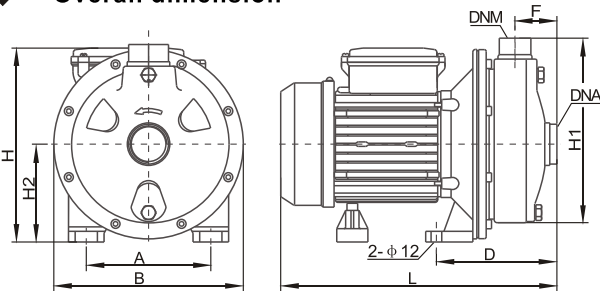
Working conditions

Medium temperature:
 Standard model: $-20^{\circ}\text{C}\sim+70^{\circ}\text{C}$
 High temperature: $-20^{\circ}\text{C}\sim+104^{\circ}\text{C}$
 Environmental temperature: $\leq+50^{\circ}\text{C}$
 Max. working pressure: 0.8MPa

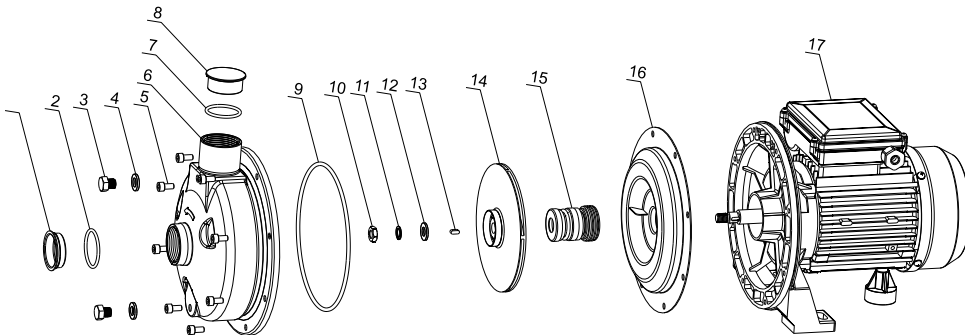
Model	Power(P ₂) kW	(Amps)		Rated head (m)	Rated flow (m ³ /h)	DNA	DNM	G.W (Kg)	Packing size (mm)
		220V/50Hz	380V/50Hz						
KLC70/037	0.37	2.4	1.0	13	4.2	G1 $\frac{1}{4}$	G1	6.7	310×195×235
KLC70/055	0.55	3.8	1.4	12	5.0	G1 $\frac{1}{4}$	G1	9.5	360×245×280
KLC120/075	0.75	5.2	1.8	14	7.2	G1 $\frac{1}{4}$	G1	10.5	360×245×280
KLC200/150	1.5	9.2	3.5	20	10	G1 $\frac{1}{2}$	G1	19.1	420×260×295



Overall dimension



Model	Shape size (mm)							
	A	B	D	F	L	H	H1	H2
KLC70/037	100	166	120	52	267	180	190	84
KLC70/055	140	213	138	49	315	218	232	110
KLC120/075	140	213	138	49	315	218	232	110
KLC200/150	140	213	138	49	366	222	255	110



NO.	Name
1	Dust cap
2	O-Ring
3	Plug
4	Washer
5	Inside hexagonal bolt
6	Pump housing component
7	O-Ring
8	Dust cap
9	O-Ring
10	Hexagonal Nut

NO.	Name
11	Spring washer
12	Washer
13	Key
14	Impeller
15	Mechanical seal
16	Pump Cover
17	Motor