

# **kds PUMPS**

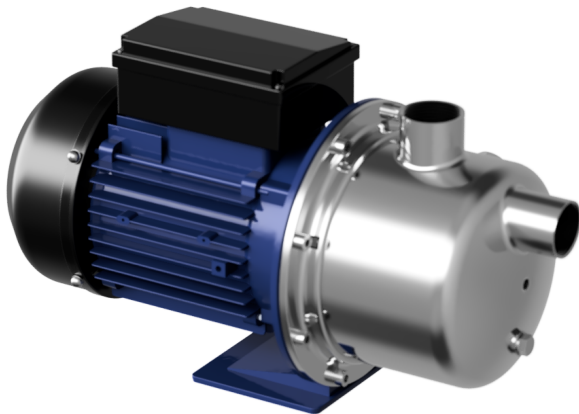
- the heart of Industry



 **One Stop  
Pumping Solution...**



## Stainless Steel Self Priming Pumps



### Motor

2-pole induction motor

Three-phase: 380V/50Hz

Single-phase: 220V/50Hz

Single-phase with thermal

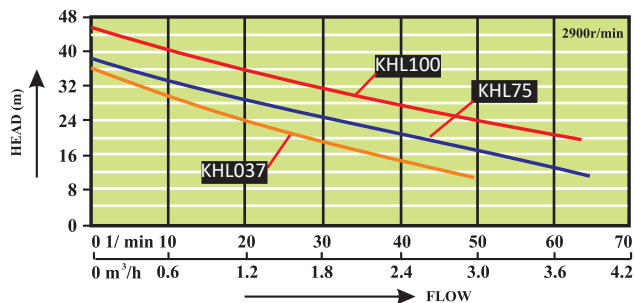
protector (Thermal protector for three phase motor are available on request)

Insulation class B

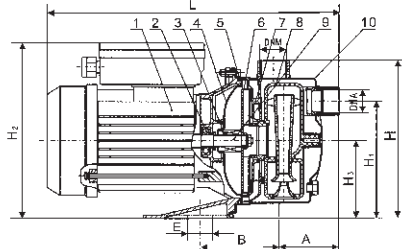
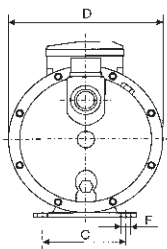
Protection IP55

Continuous duty

### Performance Curve



### Installation Structure



1. Ejector
2. Bearing
3. Mechanical Seal
4. Pump cover
5. O - ring

6. Impeller
7. Guide plate
8. Ejector
9. Pump shaft
10. Pump casing

### Applications :

- Non-flammable or Non-Explosive Clear Water without Abrasive or Fibre and Not Aggressive to Stainless Steel.
- Pure Water or Drinking Water Bottling.
- Household boosting, Garden Sprinkler, Car Washing.
- Air-Condition or Cooling System, Industrial Washing and Other Special Application.

### Operation Conditions:

Liquid temperature: +5 °C ~ +60 °C

Max. environmental temperature: +50 °C

Max. Bear pressure: 6 bar

Max. suction head : 8 m

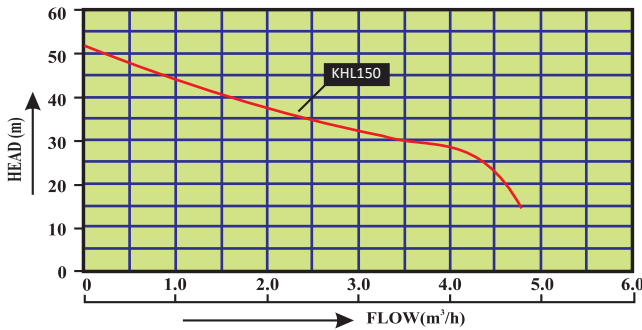


**Stainless Steel Self Priming Pumps**

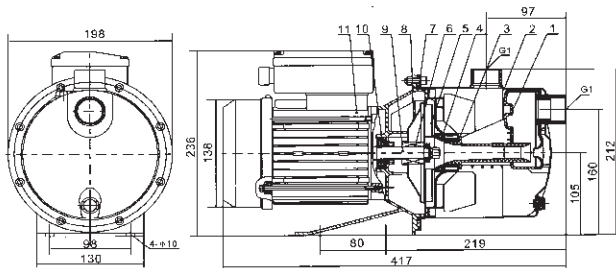
**Motor**

2-pole induction motor  
 Three-phase: 380V/50Hz  
 Single-phase: 220V/50Hz  
 Single-phase with thermal protector (Thermal protector for three phase motor are available on request)  
 Insulation class B  
 Protector Ip55  
 Continuous duty

**Performance Curve**



**Installation Structure**



- 1. Ejector
- 2. Bearing
- 3. Mechanical Seal
- 4. Pump cover
- 5. O - ring
- 6. Impeller
- 7. Guide plate
- 8. Ejector
- 9. Pump shaft
- 10. Pump casing

**Applications :**

- Non-flammable or Non-Explosive Clear Water without Abrasive or Fibre and Not Aggressive to Stainless Steel.
- Pure Water or Drinking Water Bottling.
- Household boosting, Garden Sprinkler, Car Washing.
- Air-Condition or Cooling System, Industrial Washing and Other Special Application.

**Operation Conditions:**

Liquid temperature: +5 °C ~ +60 °C  
 Max. environmental temperature: +50 °C  
 Max. Bear pressure: 6 bar  
 Max. suction head : 8 m

Model		Power	Suction Head (m)	Flow (m3/hr)	0.6	1.2	1.8	2.4	3	3.6
220V/50HZ	380V/50HZ				Head (m)					
KHL 37		0.37	8	Head (m)	29	24	19	14		
KHL 75		0.55	8		33	28	24	21	16	12
KHL 100		0.75	8		40	36	32	28	24	20
Model		Power	Suction Head (m)	Flow (m3/hr)	0	1	2	3	4	4.5
KHL 150		1.1	8	Head (m)	51	42	36	30	26	15

**KDS PUMPS INDUSTRIES.**

30,Ved Industrial Park 2,B/H - Shreenath EstateKathwada-Singarva Road.  
 Ahmedabad, Gujarat, India - 382430  
 Mobile : +91-9638871757 / +91-9898231602  
 Web : www.kdspumps.com