



SUN-TWS

SUN TYRE & WHEEL SYSTEMS

SRI LANKA - INDIA



TALON *Prime*

Sun Tyre & Wheel Systems (SUN-TWS) is part of the \$7 billion TVS Group. TVS, founded in 1911, are leaders in Automotive Engineering and suppliers to all the major Automotive OEMs around the world. Sundaram Industries Limited has been in business for over 70 years, with 27 manufacturing locations in India and Sri Lanka.

SUN-TWS is primarily engaged in the Material Handling space, and is a leading supplier of all tyres, wheels and related products with two manufacturing plants in the Natural Rubber rich countries of Sri Lanka and India, and a 3rd plant under construction in India.

SUN-TWS has the widest range of designs, across the entire spectrum of price-performance to equip its customers with the strongest, most competitive product line-up possible.

The Company's products include solid resilient tyres; press on band tyres (solid cushion); industrial pneumatic tyres; solid skid steer tyres; airport ground support tyres and assemblies; specialty tyres for ports, smelters, scrap handling, etc.; wheels and rims; full tyre & rim assemblies; access platform wheels; remanufactured tyres; polyurethane load and support wheels; custom mould on wheels; static mounting presses and tools; and other related products.

The company's Engineering Design Center is an important technical resource for all its customers, with full capability to create solutions for specific applications and provide application engineering support. Competitor tyres are routinely tested and benchmarked in order to ensure that SUN-TWS has the most up-to-date quality and performance standards.

All products of SUN-TWS meet international standards set by ETRTO and US-TRA, and are fully compliant with REACH regulations.

TALON Prime tyres

Presenting the TALON platform of solid industrial resilient tyres - Premium & High performance - created to take your work head-on and never let you down.

The ultimate grip, even on less than perfect surfaces

- Long life
- Superior ride comfort
- Low heat build-up to withstand extreme wear and tear
- High load carrying capacity
- Less maintenance for forklifts
- Less rolling resistance
- Absolute stability
- Efficient operation

The design tells their story

In the design of the tyres, our EDC has integrated layers of specially formulated compounds of varying hardness and physical properties to meet the performance standards of each end product. Compounds and designs are carefully selected to meet the diverse application requirements under exacting work conditions.

Tread: The wear-resistant compound combined with the unique tread design ensures improved stability, traction and braking in both dry/wet conditions.

Centre: The resilient softer center cushion compound is designed to reduce heat build up and rolling resistance and increase life of a tyre. The elastic property absorbs shock from being transmitted to the equipment, giving drive comfort, absolute safety and increased truck life through reduced vibration.

Hard Base: The Hard Base area uses high durometer compounds with steel creel beads or hoop rings or with a matrix of nylon tyre cord fabric / rubber compound to provide firm grip in the rim seating area and thus eliminating any spinning problems.

TALON Prime - advantages

The TALON platform of solid industrial tyres has been designed to give you the very best in technical performance that meets requirement. These tyres have been designed from the ground up with a hard wearing tread and wide footprint and have several important features:

- All tyres conform rigidly to ETRTO and US-TRA.
- Talon Prime tyres come in a wide range of constructions to cater to an amazing spectrum of material handling applications.
- Apart from our comprehensive range, our EDC is ready to provide customized constructions and new sizes.
- The square shoulder tread design provides better contact area and wider footprint. The curved tread edges prevent damage due to impact load. The optimum tread skid depth gives longer life.
- A lesser sidewall angle provides more tread width and better stability in operation.
- Available options for steel creel beads and hard rubber base compound ensuring a firm fit with the rim.
- Customers seeking for private label manufacture will be pleased with options for their own proprietary markings of BRAND, SIDEWALL marking and BARCODE sticker.
- Total traceability from start to finish, identified by type mark, embossed stencil number and Barcode sticker.
- A comprehensive physical and chemical testing laboratory to ensure a consistent high quality standard.



Tyre Sizes and Specifications

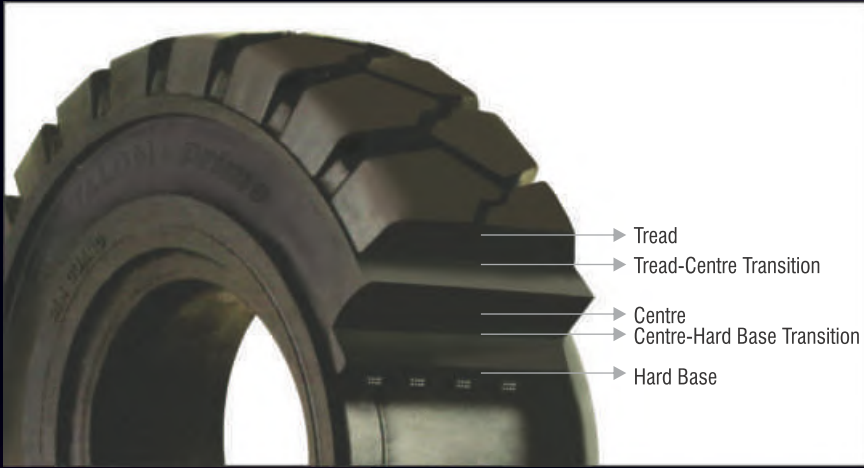
				Tyre dimensions in mm			Tyre load capacity on fork lifts, kg at 25kmph	
TYRE SIZE	TYRE SIZE (METRIC)	RIM	TREAD	Outer Dia.	Sidewall width	Tread width	Load wheel	Steer wheel
3.00 - 4		2.10	RIB	245	85	75	260	195
3.50 - 4		2.10	RIB	250	89	83	260	195
4.00 - 4		2.50	LUG	300	92	84	535	412
3.50 - 5		3.00	RIB	300	100	90	900	690
4.00 - 8		2.75, 3.00	LUG, RIB	402	103	86	950	730
4.00 - 8		3.75	RIB	405	119	86	950	730
12x3 1/2 - 8		3.00	SM	308	98	87	850	650
	100/80-8	2.50	SM	360	105	90	1,000	770
15X4 1/2 - 8	125/75-8	3.00, 3.25	LUG	368	105	90	1,040	800
15X4 1/2 - 8	125/75-8	3.00, 3.25	SM	378	110	100	1,040	800
5.00 - 8		3.00	LUG	450	120	110	1,415	1,090
5.00 - 8		3.75	RIB	450	125	110	1,415	1,090
16X6 - 8	150/75-8	4.33	LUG	406	140	125	1,270	975
17X7 - 8		4.33	SM	430	150	134	2,000	1,540
18X7 - 8	180/70-8	4.33	LUG, RIB	450	157	142	2,145	1,650
	140/55 - 9	4.00	LUG	376	125	110	1,170	900
6.00 - 9		4.00	LUG	520	138	120	1,885	1,450
21X8 - 9	200/75-9	6.00	LUG	517	188	157	2,755	2,120
	200/50-10	6.50	LUG	454	190	160	2,470	1,900
6.50 - 10		5.00, 5.50	LUG	566	160	140	2,340	1,800
7.50 - 10		5.00, 5.50	LUG	630	170	150	3,070	2,360
23X9 - 10	225/75-10	6.50	LUG	580	194	178	3,160	2,430
7.00 - 12		5.00	LUG	646	172	150	2,920	2,240
23X10 - 12		8.00	LUG	580	232	200	3,770	2,900
27X10 - 12	250/75-12	8.00	LUG	672	240	200	3,900	3,000
23X5 - 13		3.75	LUG	605	122	102	1,495	1,150
7.00 - 15		5.50	LUG	705	180	158	3,545	2,725
7.50 - 15		5.50, 6.00, 6.50	LUG	736	193	168	3,900	3,000
8.15 - 15 (28X9 - 15)	225/75-15	7.00	LUG	678	221	190	3,445	2,650
8.25 - 15		6.50	LUG	808	192	173	4,750	3,650
2.50 - 15	250/70-15	7.00, 7.50	LUG	706	220	190	4,745	3,650
3.00 - 15	315/70-15	8.00	LUG	806	242	223	5,850	4,500
28X12.5-15	345/45-15	9.75	LUG	705	275	255	5,525	4,250
	355/65-15	9.75	LUG	810	285	265	7,000	5,450
	400/60-15	11.00	LUG	810	318	298	8,970	6,900
7.50 - 16		5.50, 6.00, 6.50	LUG	736	193	168	3,900	3,000
8.25 - 16		5.50, 6.00	LUG	808	192	173	4,750	3,650
7.50 - 20		6.00	LUG	870	200	175	3,900	3,250
8.25 - 20		6.50	LUG	915	200	180	4,380	3,650
	355/50-20	10.00	SM	810	285	265	8,970	6,900
9.00 - 20		6.50, 7.00	LUG	972	226	191	5,400	4,500
10.00 - 20		7.00, 7.50, 8.00, 8.50	LUG	1,004	250	203	6,000	5,000
10.00 - 20		7.50, 8.00, 8.50	SM	1,050	265	235	6,000	5,000
11.00 - 20		7.50, 8.00, 8.50	SM	1,050	265	235	6,000	5,000
12.00 - 20		8.00, 8.50	LUG	1,080	255	232	7,560	6,300
12.00 - 20		8.00, 8.50	SM	1,140	295	250	7,560	6,300
13.00 - 20		8.00, 8.50	SM	1,140	295	250	7,560	6,300
12.00 - 24		8.50	LUG	1,165	265	230	8,040	6,700
12.00 - 24		10.00	LUG	1,165	285	245	8,280	6,900
14.00 - 24		10.00	LUG	1,275	308	270	11,100	9,250
14.00 - 25		10.00	LUG	1,275	308	270	11,100	9,250

All dimensions are nominal and we reserve the right to make changes at any time, and without notice

Notes:

All TALON Prime tyres are available with Steel reinforcement (bead wires or creel beads). All tyre types also available in SOFTRIDE construction for extra ride comfort.

1. Service life depends on severity of operating conditions
2. Tyre usage should follow ETRTO or US-TRA norms for operations
3. Option for Normal ride indicates a low-rolling resistance configuration
4. Option for SOFTRIDE indicates an extra-soft center compound for drive comfort
5. Vehicles fitted with Non-marking tyres must be properly earthed.
6. Available in Black, Non-marking, Specialty compounds; with or without Clip.



Tyre Construction Details

TANTOR Prime	M1	P1	P3
GRADE	STANDARD	PREMIUM	XTRA PREMIUM
Design	3-stage, Rich Natural Rubber tread, Soft centre compound	3-stage, Premium Natural Rubber tread, Extra soft centre compound	3-stage, Specially formulated Rich Natural Rubber tread, Extra soft centre compound
Ride	Superior ride comfort	Superior ride comfort	Exceptional ride comfort
Operating Conditions	Heavy duty, continuous use	Heavy duty, continuous use	Severe operating conditions
Advantages	Work horse design, Low rolling resistance,	High endurance, Low rolling resistance, Long operating life, wide footprint	Exceptional design to tackle the Wide foot print, Long operating life

Our product basket includes

- Solid Resilient Tyres
- Press-on Band Tyres
- Industrial Pneumatic Tyres
- Solid Skid Steer Tyres
- Specialty Application Tyres
- Tyre and Wheel Assemblies
- Airport Ground Support
- Remanufactured Tyres
- Solid and Semi-pneumatic Agricultural Tyres
- Access Platform Wheels
- Custom Mould-on Wheels
- Polyurethane Wheels
- Industrial Wheels and Rims
- Mounting Presses and Tools



Corporate Office:

180 Mount Road, Chennai 600 006, India. Phone: **India:** +91 44 4385 7129, **USA:** +1 919 300 7517, **UK:** +44 20 3371 9132 Email: crm@sun-tws.com

Manufacturing locations:

Plant #1 A1-F3/A, New Sidco Industrial Estate, Maraimalainagar 603 209, India	Plant #2 Lot 2, Block B, Biyagama Export Processing Zone, Colombo, Sri Lanka	Plant # 3 7/B1, Sipcot Industrial Complex, Pudukottai, Tamil Nadu, India
---	--	--