



5.5 - 245 kw / 7.5 - 335 HP

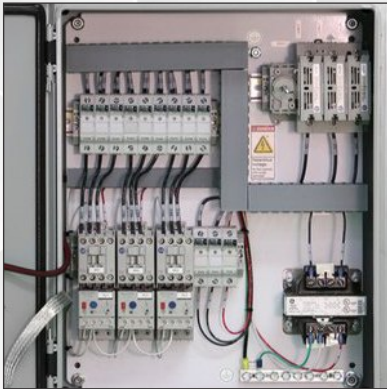
ROTARY SCREW AIR COMPRESSOR



YOUR ENERGY EFFICIENT
COMPRESSED AIR SOLUTION

SAME
COMPRESSOR

SPECIFICATIONS



CONTROL PANEL

Control Panel / starter has been put in the cold zone which ensure long life operation. Switchgears are also made of Siemens or standard quality.



AIR & OIL COOLER

Based on the Hot Climate of India, we provide Big size, high efficient Air & Oil Cooler which increases the durability of the Compressor.



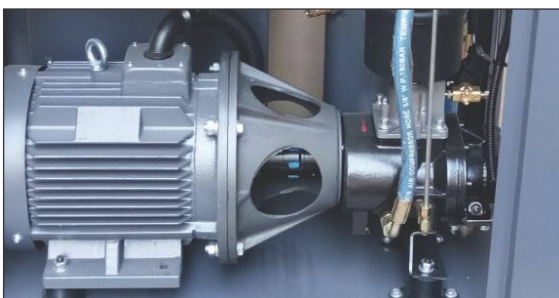
SEAMLESS PIPELINES

We use Seamless, long life Pipelines instead of short-lived Hosepipes, which eliminates oil Leakages.



OIL SEPERATION SYSTEM

Two stage oil seperation system in which Oil is initially separated by Centrifugal force and minimal oil remains are then separated by separator element.



ENERGY SAVING 1:1 DIRECT DRIVE

1:1 Direct drive is maintenance free coupling, which reduces number of components needed in gear drive, increasing reliability and durability through elimination of wear & transmission loss.



PLC

Advanced microprocessor based control system with features such as online pressure, temperature and current measurement, safety settings, online maintenance indications. It also has a unique fan control system which eliminates use of thermostats in the compressor.



HIGH CAPACITY DUAL AIR FILTER

Big Size, High efficient, dual filtering stage suction Air Filter for Dusty Environment of India with prefilters.



VFD WITH PM MOTOR

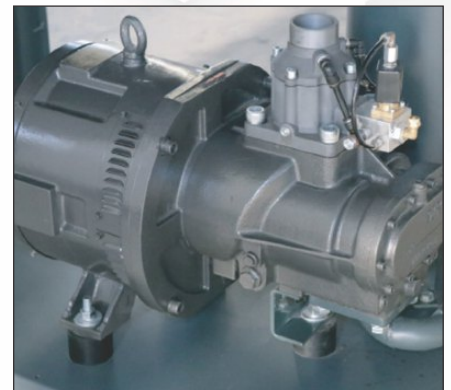
A REVOLUTION IN ENERGY SAVING

VFD (VARIABLE FREQUENCY DRIVE) WITH PM MOTOR

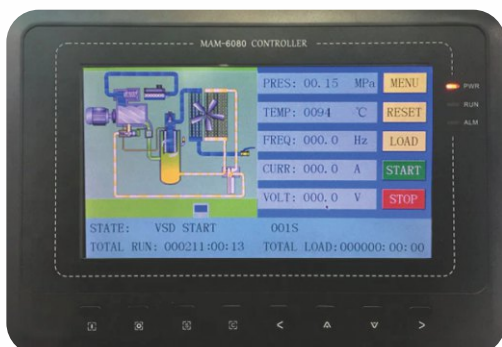
With the motive to reduce the Energy cost in our Air Compressors, we now introduce Energy saving Permanent Magnet Motors with our VFD models which decrease the Energy consumption substantially to save even more energy as well as money.

WHY PM MOTOR?

- ☑ Interior PM (IPM) Motor Efficiency upto 94.5%, which **Outperforms Ie3 efficiency level.**
- ☑ On Average **20% Lower specific Energy Requirement** than the current VSD models.
- ☑ On top of energy savings, **Free Air Delivery (FAD) increase up to 12%** over the range.
- ☑ Compact small in size IPM motor has no bearings which means no wearing parts, no maintenance on motor side and no gears or belts, leading to a **Transmission Efficiency of 100%.**



STANDARD QUALITY VFD



FEATURES

SMOOTH START-UP

The VSD is soft starting, enabling controlled acceleration and deceleration which reduces stress on mechanical components and enhances system reliability. This results in increased life of the compressor.

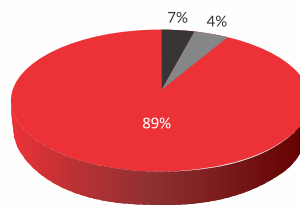
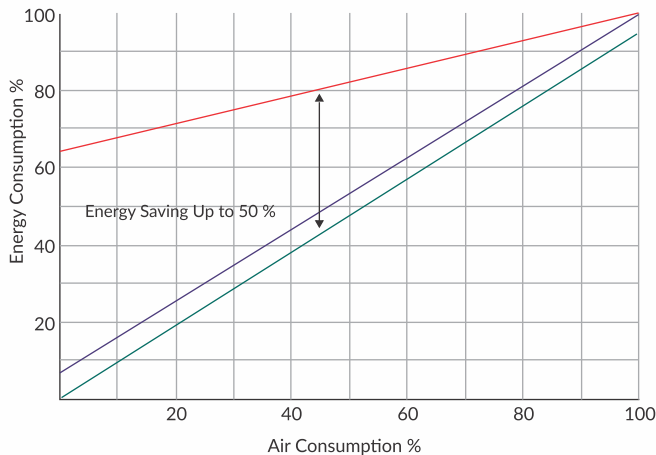
SMART CONTROL

VSD keeps desired line pressure constant, adjusting automatically according to system air consumption by varying motor speed. The Compressor only consumes the energy needed to produce the compressed air required by the system. In fixed speed if compressor operates on no load, energy is wasted while no work is performed. VFD with PM motor saves up to 39% energy compared to conventional cycling.

A fixed speed compressor operates on a load-unload band of at least 10 PSI around the working pressure, whereas with VSD Compressor can be operated within a band of 2 PSI. For every 2 PSI reduction in operating pressure, there is 1% power saving.

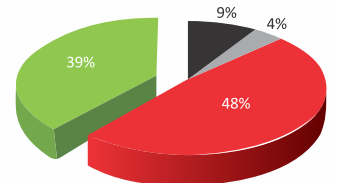
5 YEARS LIFE CYCLE COST WITH VFD & WITHOUT VFD

SAVINGS OF ABOUT 23 LAKH RUPEES IN 5 YEARS



Compressor Without VFD

- Compressor Cost
- Electricity Cost
- Maintenance Cost



Compressor With VFD and PM motor

- Electricity Cost
- Saving
- Compressor Cost
- Maintenance Cost

TECHNICAL SPECIFICATIONS

STANDARD FIXED SPEED MODELS

COMPRESSOR MODEL	MOTOR		FAD @ 8 kg/cm ²	FAD @ 10 kg/cm ²	SOUND LEVEL	COMPRESSOR RPM	DIMENSION LWH	WEIGHT
	kW	HP	CFM	CFM	DB		INCHES	KG.
SE 7.5	5.5	7.5	26	24	68	2900	34 X 26 X 44	400
SE 10	7.5	10	39	36	68	2900	34 X 26 X 44	400
SE 15	11	15	58	49	68	2900	36 X 30 X 43	400
SE 20	15	20	81	75	70	2900	36 X 30 X 43	450
SE 25	18.5	25	106	95	71	2900	49 X 30 X 51	550
SE 30	22	30	130	112	72	2900	49 X 30 X 51	550
SE 40	30	40	180	162	72	2900	57 X 35 X 58	750
SE 50	37	50	225	210	73	2900	57 X 35 X 58	800
SE 60	45	60	270	250	74	2900	73 X 42 X 67	960
SE 75	55	75	340	315	75	2900	73 X 42 X 67	1150
SE 100	75	100	460	440	76	2900	79 X 47 X 65	1400
SE 120	90	120	540	520	76	2900	79 X 58 X 70	1900
SE 150	110	150	697	670	76	2900	92 X 59 X 73	2400
SE 180	132	180	-	773	76	2900	92 X 61 X 75	2500
SE 215	160	215	-	830	77	2900	99 X 65 X 78	3200
SE 250	185	250	-	1002	79	2900	110 X 70 X 85	3700
SE 300	220	300	-	1323	79	2900	110 X 70 X 85	4100
SE 305	245	335	-	1440	79	2900	110 X 70 X 85	4500



GENUINE SPARES AND SERVICES

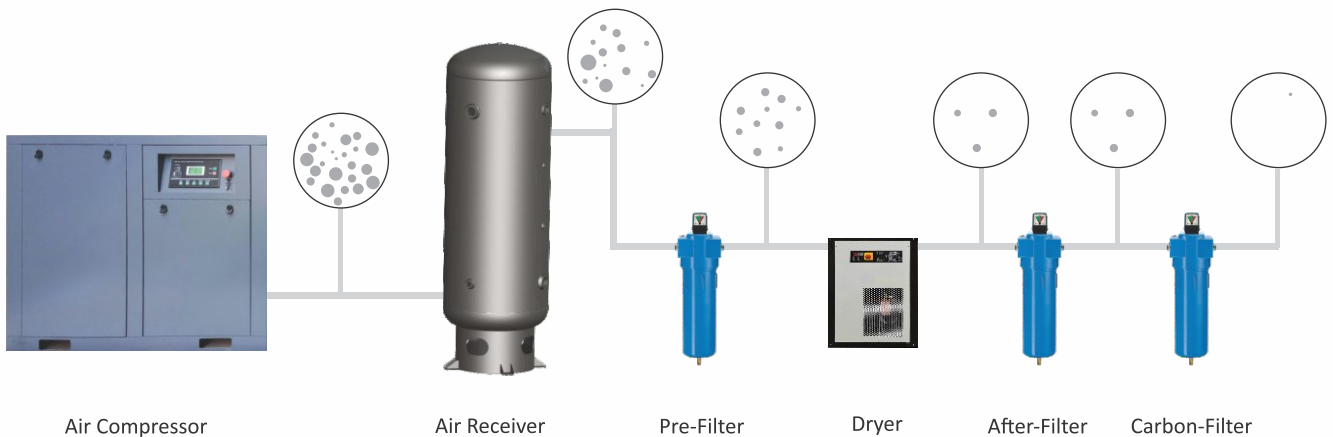
For enhancing performance and productivity. Our commitment for Best After Sales Services & Technical Support to run your plant 24 hours a day, 365 days per year, we maintain a large inventory of replacement parts for same day dispatch.

VFD+ MODELS WITH PM MOTOR

VFD MODEL	MOTOR		WORKING PRESSURE	MAX PRESSURE	FAD
	kW	HP	Kg/cm ²	Kg/cm ²	cfm
SEV 15	11	15	7	7.5	27-70
	11	15	8	8.5	27-64
	11	15	9.5	10	27-55
	11	15	12.5	13	27-45
SEV 20	15	20	7	7.5	38-95
	15	20	8	8.5	38-89
	15	20	9.5	10	38-77
	15	20	12.5	13	38-67
SEV 25	18	25	7	7.5	50-120
	18	25	8	8.5	50-112
	18	25	9.5	10	50-100
	18	25	12.5	13	50-84
SEV 30	22	30	7	7.5	57-140
	22	30	8	8.5	57-135
	22	30	9.5	10	57-114
	22	30	12.5	13	57-94
SEV 40	30	40	7	7.5	86-205
	30	40	8	8.5	86-186

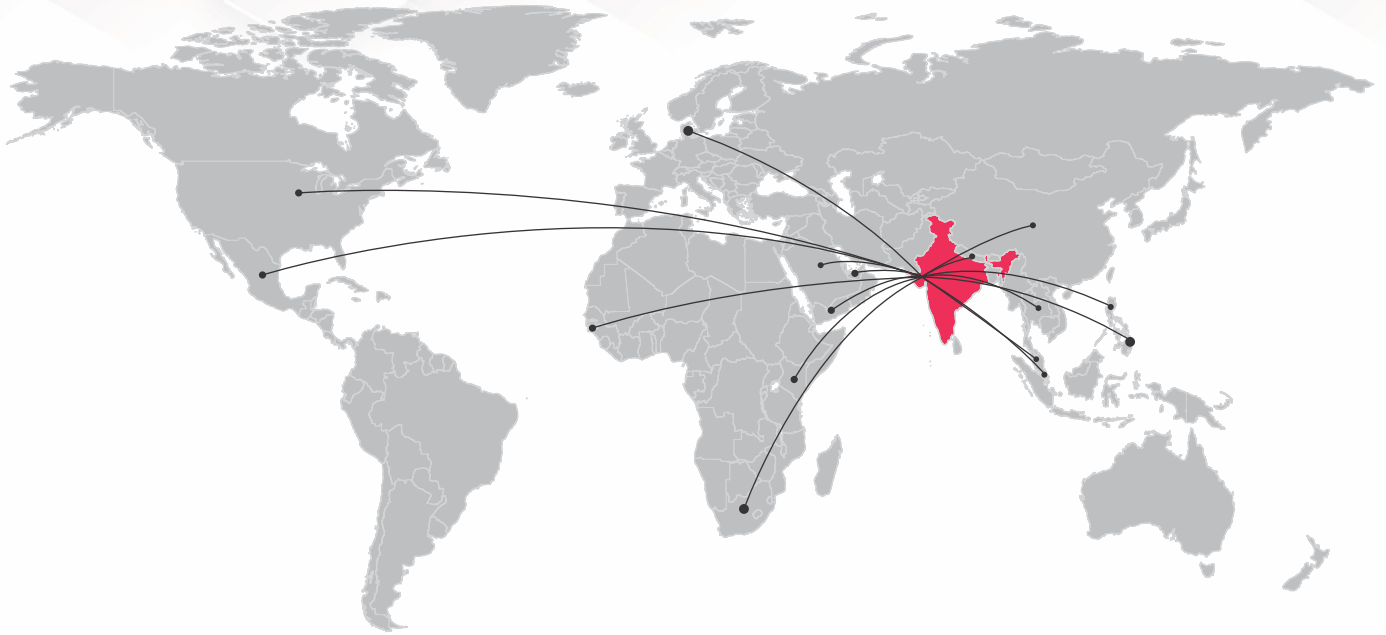
VFD MODEL	MOTOR		WORKING PRESSURE	MAX PRESSURE	FAD
	kW	HP	Kg/cm ²	Kg/cm ²	cfm
SEV 40	30	40	9.5	10	86-172
	30	40	12.5	13	86-140
SEV 50	37	50	7	7.5	107-253
	37	50	8	8.5	107-235
	37	50	9.5	10	107-215
	37	50	12.5	13	107-185
SEV 60	45	60	7	7.5	127-301
	45	60	8	8.5	127-276
	45	60	9.5	10	127-254
SEV 75	45	60	12.5	13	127-206
	55	75	7	7.5	160-380
	55	75	8	8.5	160-358
	55	75	9.5	10	160-321
SEV 100	55	75	12.5	13	160-265
	75	100	7	7.5	224-520
	75	100	8	8.5	224-490
	75	100	9.5	10	224-452
75	100	12.5	13	224-390	

TYPICAL COMPRESSED AIR SUPPLY SYSTEM



**SALES &
SERVICE
NETWORK
ALL OVER**

INDIA



We Are Dealing Of Screw Air Compressor And Spare Parts.

SAME COMPRESSOR

107, Opera Point, Opp Kothariya Village,
Kothariya, Rajkot-360022 (guj.) India.

Telefon - **+91 91040 87077**

E-mail : sameenterprise007@gmail.com

website : www.sameenterprise.com

