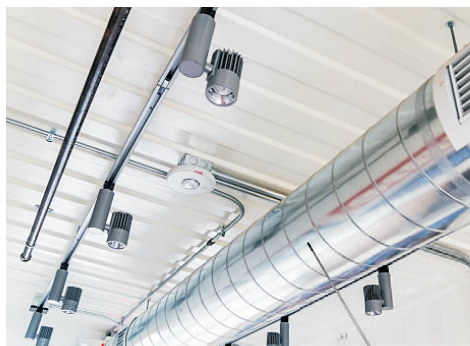
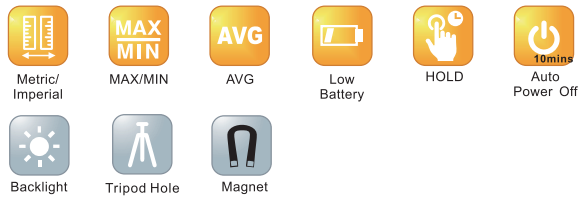


NEW



Handheld Hotwire Anemometer with temperature 8952

- Robust telescoping hot wire probe. Compact thermal sensor is ideal for in-duct measuring to minimize turbulence effect and suited for low flow and velocity applications.
- Measures velocity, volume flow (cmh, cmm, cfm, l/s) and temperature.
- Duct temp. change has limited impact to reading accuracy.
- Timed & multi-point average flow calculations.
- In-duct air balancing with fast response time
- Depth and direction indicators. Hands free magnet



The telescoping handle makes it easy to reach duct work above head.



O-rings to mark the depth of duct



Non detachable hotwire probe.

More reliable.

Ordering Code

VZ8952AZ, 8952 meter w/hotwire probe

*Available for EB project

Model	8952
Wind speed range	0.15~20.0M/S (30.0 ~3937 ft/m)
Wind speed resolution	Below 10 m/s:0.01, above 10 m/s:0.1 (Below 100 ft/m:0.1, above 100 ft/m:1)
Wind speed accuracy	+/-(-5% of reading+0.1) m/s +/-(-5% of reading+20) ft/m
Air temp. range	-10.0~50.0°C (14.0~122.0° F)
Air temp. resolution	0.1°C /0.1° F
Air temp. accuracy	0.0°C~50.0°C is ±1.0°C(1.8°F), Below 0°C is±1.5°C (2.7°F)
Wind speed response time	0.5 second (typical)
Temp. response time	60 seconds (typical)
LCD update	every second
Air volume display	0 to 99999
Air volume resolution	0.1(0 to 9999.9) or 1 (10000 to 99999)
Air volume unit	cmm, cmh, l/s, cfm
LCD size	26(H)x44(W)mm
Operating temp.	0~50°C
Operating RH%	Humidity<80%
Storage temp.	-10~50°C
Storage RH%	Humidity < 90%
Dimension(mm)	175x70x33 (meter)
Probe	8mm diameter
Telescope tube	96cm (38 inch) extended. 26.5cm (10 inch) storage
Weight	331 g
Battery	4pcs AAA batteries
Standard Package	Meter with built-in hotwire probe/Battery/Magnet/Manual/O-rings/Hard carry case



Strong magnet for hands free operation ~