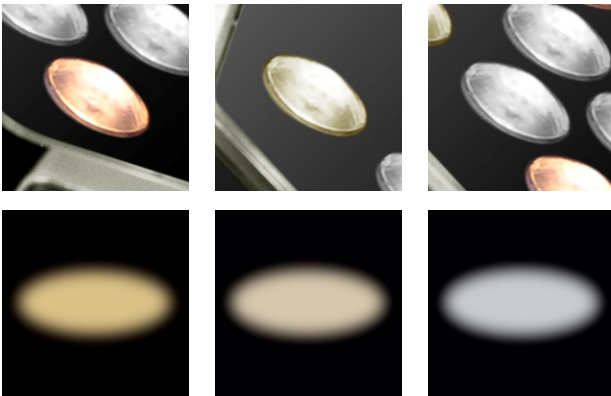




Luminox Eco Pro
Always in focus...

Multicolored LEDs enabling variable color temperature

Luminox Eco uses multicolored LEDs to achieve either a fixed daylight like color temperature- 4350 K or a variable color temperature from 3700 K to 5500K. This feature is important as the light head can distinguish the difference between various tissue types and the perception of true tissue colors by using the appropriate color temperature mode, which is used especially within cardiac surgery.



Warm

Neutral

Cool

Prism uses a combination of warm white, neutral white and cool white LEDs to achieve the required color temperature variation. This ensures that the light in the operating area is symmetrically illuminated from different parts of the light head and the surgeon will not get a 'Rainbow effect' when the surgeon might accidentally block some of the light sources.

Cutting edge illumination technology

Being a specialist in lighting design, Prism has integrated the latest generation of LEDs and optical technology to ensure maximum power efficiency and comfort for the operating surgeon. Our LEDs have very high lumens per watt enabling superior illumination while consuming very low power and there by low heat. Even at the max 100000 illumination, the LEDs are driven only at 40% of their rated capacity, there by exponentially reducing the heat and extending the life of the LEDs.

PRISM Luminox

50,000 hrs

Standard LED

20,000 hrs

Gas Discharge Bulb

5,000 hrs

Halogen Bulb

1,000 hrs

Recommended For

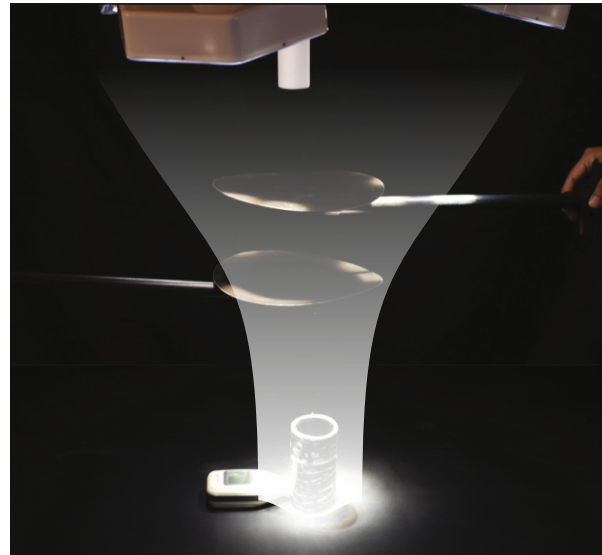
Luminox Eco Series gives surgeon excellent flexibility for all types of applications and can be used for:

Gynaec	Laparo OT
Minor OT	General Surgery





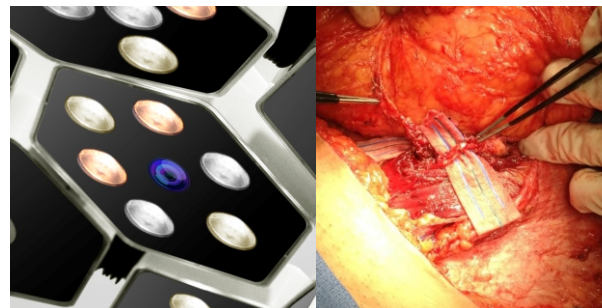
Optically enhanced Shadowless-ness



With over 600 interacting light beams, combined with advanced parallel beam optics, Luminox Eco Pro ensures a high degree of Shadowless-ness. The new optical design enables the light head to have 23% higher light emitting area, thereby resulting in an enhanced shadow-less compliance.

Prism Full HD Imaging Solution

Luminox Eco Pro comes with a provision to put an inbuilt camera with true Full HD resolution (1920x1080p at 60 fps) and auto focus zoom lens.



Antiglare Light-field for long surgeries



Optically designed to deliver high intensity light without glare for operating surgeon to manage surgeon eye fatigue. Special optical techniques of indirect illumination and luminance contrast management used to deliver glare free lighting.

Detachable Handle for Sterilization



Each light head comes with 2 detachable sterile field handles to enable surgeon a bit more freedom to hold and move the light head under the spot suspension technique.

BRIGHTNESS
WHERE IT
MATTERS

Technical Specifications*

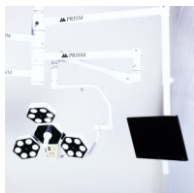
	PRINCIPAL DOME	SATELLITE DOME
Central illuminance (at 1m distance)	1,00,000 lux	50,000 lux
Light field diameter (at 1m distance)	220-280 mm	150 mm
Depth of illuminance(L1 + L2)	1,100 mm	700 mm
Correlated color temperature	4,350 K / 3700K-5700K	4,350 K / 3700K-5700K
Color rendering index	93	93
Service life of bulb	50,000 h	50,000 h
Bulb power consumption	42 W	27 W
Power supply	100-240 VAC, 50/60 Hz	100-240 VAC, 50/60 Hz
Number of LED bulbs	14	9
Dimming range	5-100%	5-100%
Light head dimension	500 mm	300 mm
Carrier-arm Camera	Optional	Optional
Increase in Temp. near Surgeon's Head Area	< 1°C	< 1°C
Safety	MOSFET/PFA/OV	MOSFET/PFA/OV

Camera Specifications

Image sensor	1/3-type CMOS (Progressive Scan)
Effective number of pixels	Approx. 4,080,000 pixels (4mp)
Signal system(HD)	1080p/50, 720p/50
White balance	Auto
Exposure	Auto / Manual
Shutter speed	1/1 to 1/10,000 sec
Focusing system	Auto / Manual / One touch

*All specifications are nominal and subject to change without notice A specification is within + 20% of a stated value at room temperature (25°C) and a nominal input power voltage.

Optional Accessories



Standard Monitor Arm



Advanced Monitor Arm

Corporate Office



B-2/1, 8th Floor, Ashar IT Park, Wagle Estate, Rd. No.16, Thane (W) 400 604, India

Tel : 022-2081 3711 | 022-2543 3711
info@matrixmedicals.in

Customer Care No.+91 93200 51023

Factory Address

R376, TTC Industrial estate, MIDC, Rabale, Navi Mumbai, 400 701, India.

Tel : 022 2172 0091
priyal@prismsurgicare.com

www.prismsurgicare.com

