

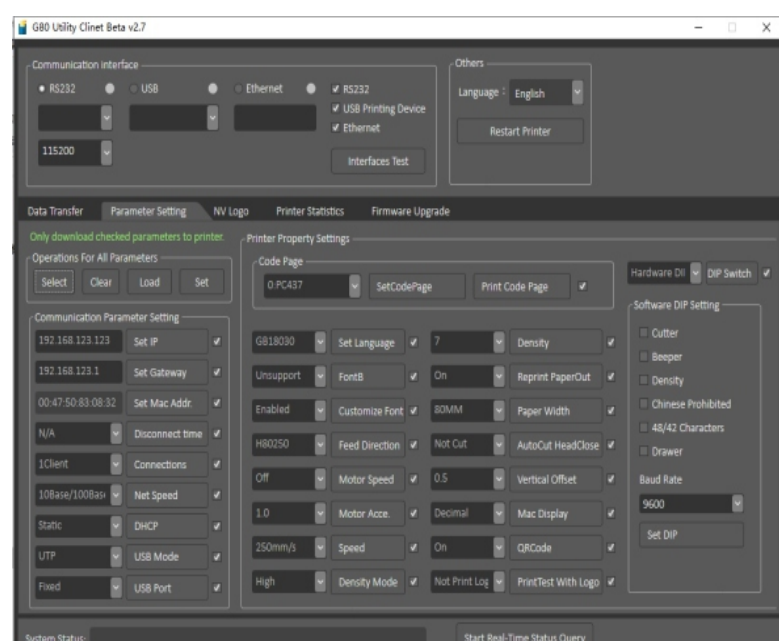
# More stable, more cost-effective

## 80mm Thermal Receipt Printer

### GP-Champ



- ★ Three in one interface, 200~250mm/s print speed
- ★ Allow print density and speed to be fine-tuned
- ★ Multifunctional button and status indicator available

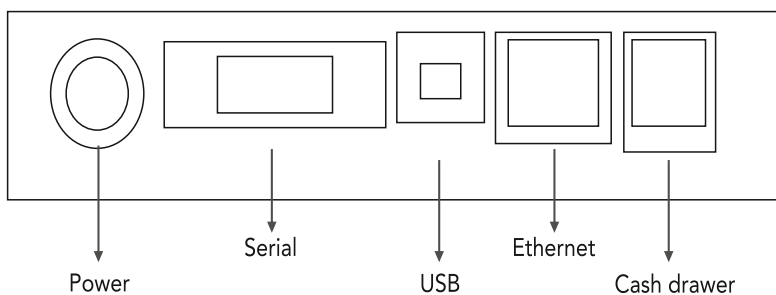


- ★ New utility to view print length, number of cuts and more
- ★ Allow users to upgrade printer firmware

## Specification

<b>Model</b>	GP- Champ
<b>Print Method</b>	Direct thermal
<b>Print Speed</b>	200~250mm/s
<b>Paper Width</b>	79.5±0.5mm
<b>Print Width</b>	64/72mm
<b>Interface</b>	Serial+USB+Ethernet
<b>Reliability(Mechanism)</b>	150km
<b>Weight</b>	1.05KG
<b>Dimension</b>	185×1 ×130mm(W×D×H)
<b>Columns</b>	Font A - 42columns or 48columns / Font B - 56columns or 64columns / Simplified/Traditional Chinese - 21columns or 24columns
<b>Character Size</b>	ANK Font Font A: 12×24dots Font B: 9×17dots Simplified/Traditional Chinese: 24×24dots
<b>Code page</b>	PC437/Katakana/PC850/PC860/PC863/PC865/West Europe/Greek/ Hebrew/East Europe/Iran/WPC1252/PC866/PC852/PC858/IranII /Latvian/ Arabic/PT151,1251/PC737/WPC1257/Thai Vietnam/PC864/PC1001/ (Latvian)/(PC1001)/(PT151,1251)/(WPC1257)/(PC864)/(Vietnam)/(Thai)
<b>Barcode type</b>	UPC-A/UPC-E/JAN13(EAN13)/JAN8(EAN8)CODE39/ITF/CODABAR/ CODE93/CODE128/QRCODE
<b>Data</b>	128K bytes
<b>NV Flash</b>	256K bytes
<b>Cash drawer out</b>	DC 24V/1A
<b>Power adaptor</b>	Input: AC 110V/220V, 50~60Hz Output: DC 24V/2.5A
<b>Work environment</b>	Temperature: 0~45°C, Humidity: 10~80%
<b>Storage environment</b>	Temperature: -10~60°C, Humidity: 10~90%

### ★ Interface Description



G D INFOTECH

[sales@g-pos.in](mailto:sales@g-pos.in)

[www.g-pos.in](http://www.g-pos.in)

7B, Nyadar Enclave, Vikas Nagar, New Delhi-110059