

## Cylinder Magnetostrictive Displacement Sensor

### Features :

- Non-contact measurement, never wear
- Absolute position output without zeroing
- Nonlinearity,  $\pm 0.01\%$  F.S of full scale
- Repeatability,  $\pm 0.001\%$  F.S of full scale
- Compact, oil and dirt resistant
- Built-in hydraulic cylinder, flange mounted

### Features of Magnetostrictive Position Sensor:

1. Robust and reliable, oil and dirt resistant
2. Compact structure, extremely small installation size
3. Non-contact measurement, never wear
4. Absolute output, no need to zero
5. Low power consumption design, effectively reducing system temperature drift
6. Suitable for all kinds of construction machinery hydraulic cylinder built-in installation



### Technical parameter

## Measurement parameters

Range	50~3000mm
signal output	4~20mA (Min / Max load : 0/500 Ω) 20~4mA (min / Max load : 0/500 Ω) 0~5VDC (Min load >5K Ω) 0~10VDC (Min load >5K Ω)
resolution	16 bits D/A
Non-linearity	<±0.04%F.S (min ±100μm)
Repeatability	<±0.005%F.S
update time	2.0ms

## electrical characteristics

Outlet voltage	Direct outlet, scattered wire or aviation plugInput 24VDC (-15/+20%)
Working current	<60mA (Varies with range)
polarity protection	Max -30VDC
Overpressure protection	Max 36VDC
Insulation ability	500V (Between signal ground and shell)

## Structure and Materials

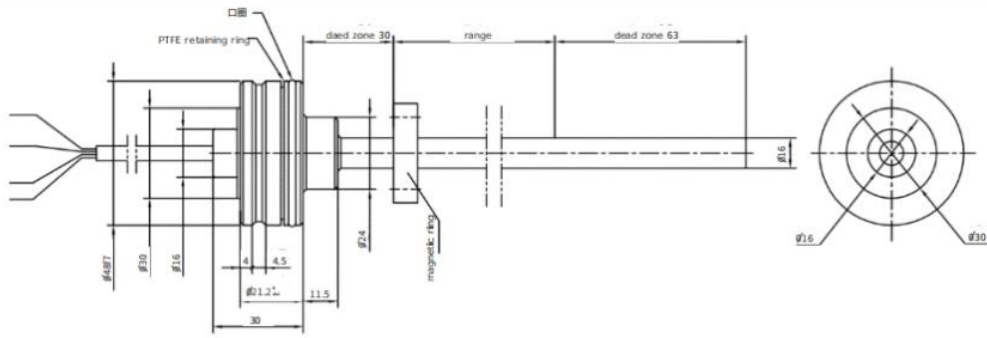
Electronic warehouse	304 stainless steel
Rod	304/316 stainless steel
position magnet ring	various ring magnet
outer pipe pressure	35MPa(continuous)/70MPa(peak)

## Working Conditions

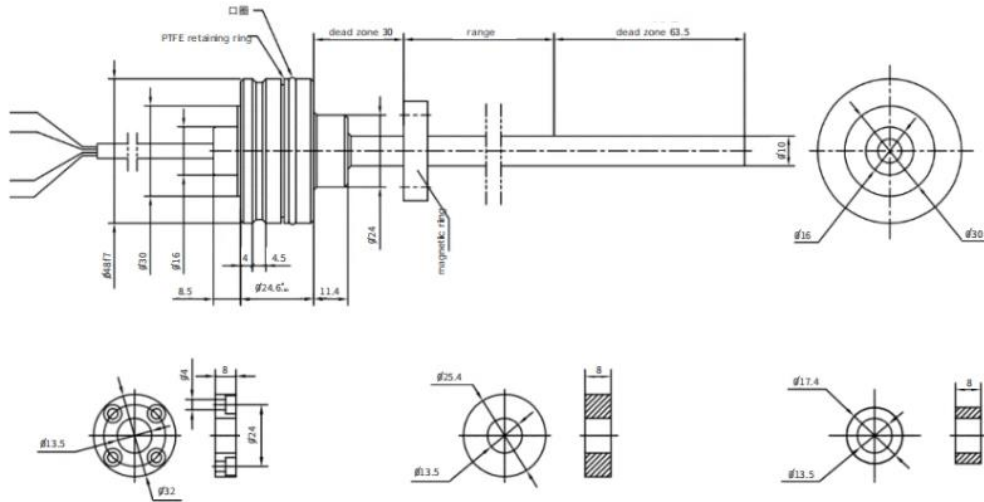
Magnet speed	any
Ambient temperature	-40°C~+85°C
Humidity/Dew Point	humidity90%, no condensation
Temperature Coefficient	<±0.007%F.S/°C
Electrical protection	IP67 IP68-special customization

**Dimension**

MH



ME



**Application**

- Plastics machinery
- Fluid Power & Linear Actuators
- Hydraulics and Pneumatics
- Processing machines
- Cylinder displacement measurement