

Baggage Handling Mini Fire Rated Shutters

ferco
Shutters and Seating Systems

**Up to 4 hours of fire integrity with
emergency gravity descent.**



Ferco's Mini Fire Rated Shutters are ideal solutions to enhance security in locations where the opening sizes are small with limited space for headroom and traditional bulky guides.

Applications include conveyor areas, kitchen counters, interior installations and so on.

Tiny Steel Slats

Small headroom requirement

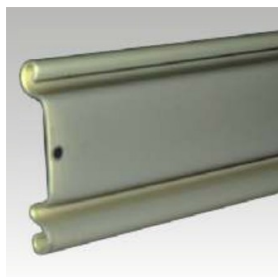
Manual or Motorized Operation

Tested to **BS EN 1634-1** and rated up to 4 hours of fire integrity.

Max. Size : Up to 4m (W) x 4m (H)

Tested to **UL 10B** and rated up to 2 hours of Fire Integrity.

Max. Size : Up to 2.5m (W) x 2.5m (H)



TINY SLATS

38mm high slats create smaller headroom requirements



COMPACT GUIDES

With a depth of just 48mm, These Guides are narrow and easy to install.



SLIM BOTTOM BAR

Flat bars, instead of traditional T-section bottom bars creates a small footprint for the shutter.

Ferco's MINI Series Shutter Specification

SHUTTER CURTAIN AND GUIDES

Curtain Slat

The shutter curtain is made of 38mm pitch x 8mm deep superior corrosion resistant galvanized steel slats. These slats are manufactured by a roll forming process, with a flat face. The slats have a reinforced interlocking profile with the edges cut-off to (end) lock the axial movements of the shutter.

Side Rails

The guide rails are made out of 2mm thick galvanized steel folded sections. The sizes of the side guides shall be 105mm wide x 48mm deep.

Bottom Bar

The leading slat of the shutter is fixed with two 50mm x 50mm x 8mm thick galvanized steel flat bars to create a narrow flat bottom bar.

Max Sizes

4m(w) x 4m(h)

DRUM ASSEMBLY

Barrel

The barrel is made out of a heavy duty seamless steel pipe of a suitable diameter that conforms to BS 1387. This is welded with axles of sizes f35 to f50mm according to the sizes of shutters with heavy duty roller bearings.

Shutter Box

A 250mm(w) x 325mm(h) shutter box is made out of two heavy duty steel end plates of thickness 4mm to 7mm. These are joined together using five 25mm x 25mm steel hollow sections and primer coated in grey and can be covered by steel sheets to form a box.

OPERATION

Shutter Operator (Motorized)

A suitably sized, fully enclosed designed motor with high starting torque, built-in gear box and built-in thermal protector is used. 1 phase, 230 V, 50HZ, 13A OR 3 phase, 415V, 50Hz, 20A power supply at motor location.

Push Button Control

Push button control with 'up', 'down' and 'stop' buttons are housed in a lockable push button box. The outer cover of the push button box is made of stainless steel.

Manual Hand Chain

Shutter operators are provided with an 'endless hand chain' for manual operation and an 'emergency closing lever'.

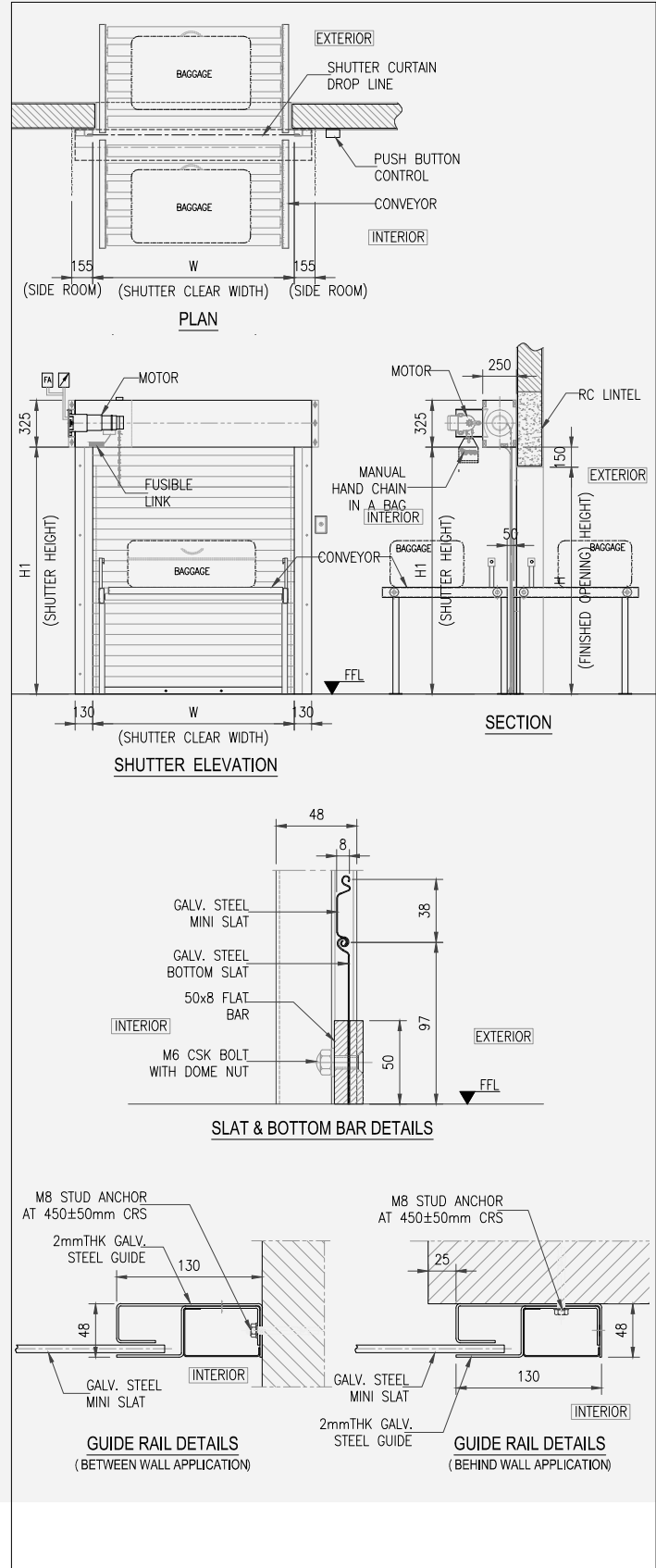
FINISH AND ACCESSORIES

Finish

Natural galvanized finish or powder coated to Ferco's standard color range.

Conveyor Belt Application

For conveyor belt applications in airports and other belt lines, photo cells can be used to detect the flow of items on the conveyor. One photo cell is used to detect oncoming item(s) and operate the shutter from a normally closed position to an open position and another photo cell can be used to detect when the item(s) has crossed the threshold area and operate the shutter back to a closed position.



INDIA

S.F.No.8 / 1A 2B, 8/ 2A2,
Industrial Shed, Seneerkuppam
Poonamalle,
Chennai - 600056,
Email: salesindia@fercoshutters.com

24 HOURS SERVICE / MAINTENANCE
+1800 258 2526

DUBAI

Plot No 247-125 Shed 1 & 2
Al Qusais, Industrial Area 4
P.O. Box 233962 Dubai UAE
Tel: 04-2586433
Fax: 04-2586533

24 HOURS SERVICE / MAINTENANCE
+971 50 8439539

SINGAPORE

120 Hillview Avenue
#02-04 Kewalram Hillview,
Singapore 669594
Tel: (65) 67608383
Fax: (65) 67607503

24 HOURS SERVICE / MAINTENANCE
+65 9001 7059