

Fire Shutters



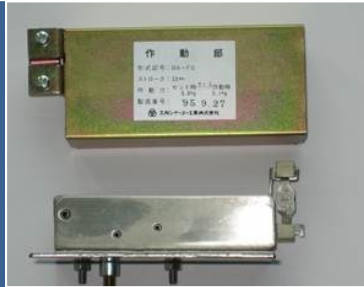
10m wide fire shutter at Seng Kang MRT Station, Singapore



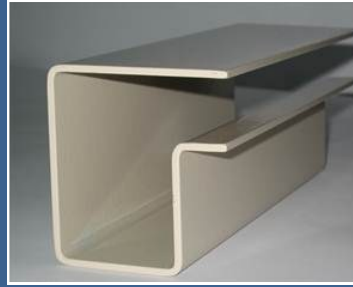
Fire alarm signal conversion panel



Solenoid Brake Releaser



Fusible Link



Heavy Duty Guide

Features:

ferco
Shutters & Seating Systems

- 2 Hour / 4 hours fire rated
- Complies with EN 1634-1:2014
- Approved by UAE Civil Defense
- Sizes up to
12m (w) x 6.5m (h) for 2 hours
12m (w) x 4.6m (h) for 4 hours
- Larger sizes with special assessment
- Superior galvanized steel curtain
- 3mm thick heavy duty guide
- Fusible link / fire alarm signal / heat or smoke detector activation
- Range of powder coat finishes

Specification

The specifications shall cover the design, manufacture, installation and operation to the required fire rating as specified in BS 476 Part 22

CURTAIN SLAT

The shutter curtain is made of 80mm, 0.8mm+0.8mm superior galvanized steel slat. These slats are manufactured by roll forming process. Slat shall have reinforced interlocking profile with edges cut off for (end) locking the axial movements.

SHUTTER BOX

Shutter box is made out of two heavy duty steel endplates of thickness 4-7mm according to the size of the shutter; joined together by using 5 nos. of 50mm x 25mm steel hollow sections and in black color primer finish. Two nos. of 50mm x 50mm x 4.5mm thick steel angles with slotted fixing holes to be welded with end plates for fixing the shutter box to structure.

BARREL

Barrel is made out of heavy duty seamless steel pipe, welded with axle of sizes f35-f50mm according to the sizes of shutters. This barrel is fixed to the right and left endplates with heavy duty sealed roller bearings.

SIDE RAILS

For exposed, face fixing applications, 'G' shaped guides made of heavy duty 75mm wide by 75mm deep by 3mm thick galvanized steel is used. For concealed guide application, 75mm wide by 75mm deep by 1.5mm thick 'U' shaped galvanized guides are used.

BOTTOM BAR

Leading slat is roll formed from galvanized steel with thickness equivalent to that of the slat. Two 38mm x 38mm x 4.7mm thick galvanized steel angle bars are bolted to the leading slat to form the bottom bar.

BOX COVER

Shutter box covers are made out of 0.8mm thick galvanized steel sheets, with folded edges for rigidity.

SHUTTER OPERATOR

A suitably sized, fully enclosed design motor with high starting torque, built-in gear box, built-in thermal protector is used. Shutter operators are provided with "endless hand chain" for manual operation from ground level. An "emergency-release lever" shall be provided for emergency closing operation.

AUTO-CLOSING MECHANISM

All fire shutters are equipped with fusible link mechanism. Upon sensing the heat of 74°C, the fusible link mechanism releases the brake of the motor and allows it to descend by gravity. Where fire shutters are needed to be activated by fire alarm signal, a dual fusible link (electric solenoid releaser) is used, which releases the brake of the motor upon receipt of 24V DC, 400mA fire alarm signal. A reset pull is provided to reapply the brake on the motor.

PUSH BUTTON CONTROL

Push button control with 'up', 'down', 'stop' buttons are housed in a lockable push button box. Outer cover of the push button box is in stainless steel.

M&E REQUIREMENTS

- 1 phase, 230V, 50Hz, 13A / 3 phase, 415V, 50Hz, 20A power supply at shutter box location.
- 24V DC, 400mA, normally open fire alarm signal at fire shutter's shutter box location.

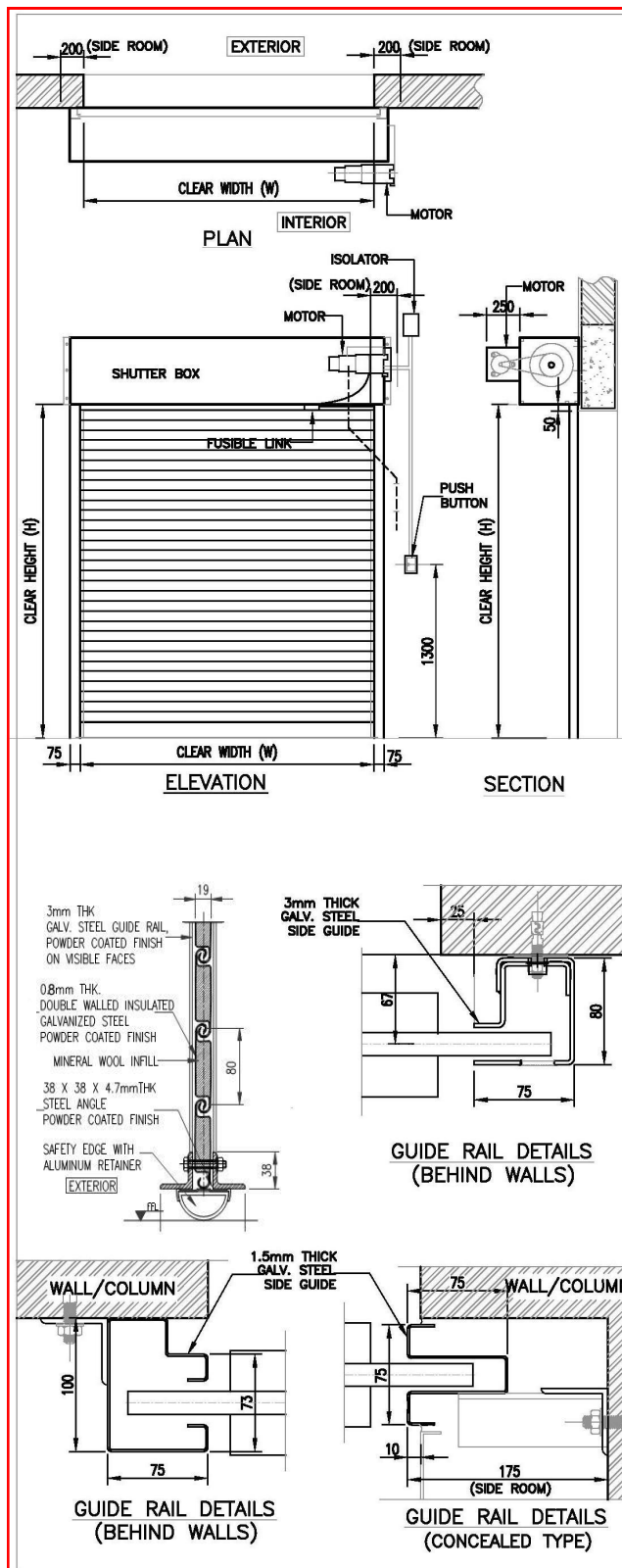
MAX SIZES

12m (w) x 6.5m (h) for 2 hours, 12m (w) x 4.6m (h) for 4 hours

Shutters with sizes larger than the above mentioned sizes can be fabricated and installed with special assessment and approval from relevant authorities.

OPTIONAL DEVICES / SERVICES

- Delay Timer
- Warning Flash and Audio Alarm
- Powder Coating Standard RAL colours
- Connection to Heat / Smoke detector.
- Fire alarm signal conversion panel with battery back up to convert voltage free signal to the required 24V DC, 400mA, normally open signal and allows the shutters to descend by gravity when the fire alarm signal is activated under complete power failure.



DUBAI

Plot No 247-125 Shed 1 & 2
Al Qusais, Industrial Area 4
P.O. Box 233962 Dubai UAE
Tel: 04-2586433
Fax: 04-2586533

24 HOURS SERVICE / MAINTENANCE
+971 50 8439539

ABU DHABI

M-04 Abu Dhabi Finance Bldg
TCA P.O. Box 113651
Abu Dhabi UAE
Tel: 02-6797609
Fax: 02-6797608

24 HOURS SERVICE / MAINTENANCE
+971 50 8439539

SINGAPORE

120 Hillview Avenue
#04-04 Kewalram Hillview,
Singapore 669594
Tel: (65) 67608383
Fax: (65) 67607503

24 HOURS SERVICE / MAINTENANCE
+65 9001 7059