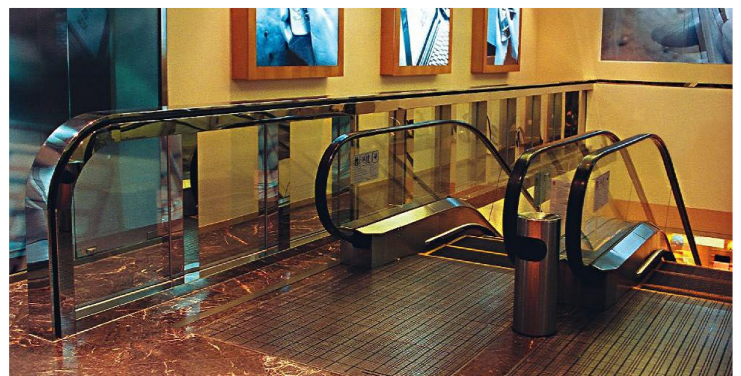
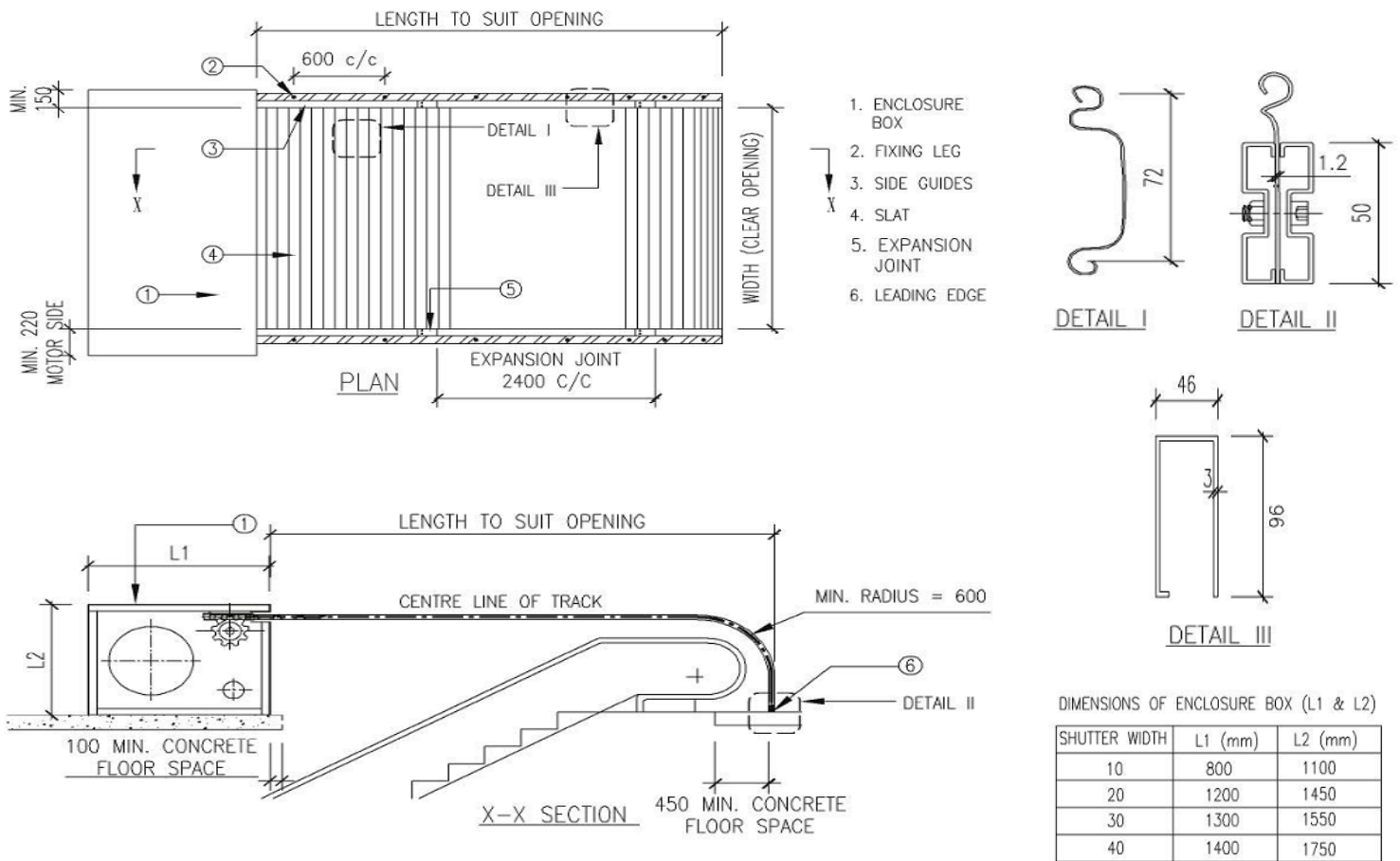




Horizontal fire rated roller shutters are ideal systems to protect escalators, staircases, skylights and ceiling openings. This reduces the requirement for expensive SHEVS systems or multiple vertical fire protection devices across many floors.

- 4 hour fire rating. Complies with BS 476 Pt 22, SS 489.
- Made from heavy duty galvanized steel, stainless steel SUS 316 and SUS 304.
- Single and double skin slat design depending on size and application.
- Approved by Singapore Civil Defense
- Designed for smooth and silent operation with the most minimal head box design.
- **Activation:** Fire alarm signal triggers closure of the shutter under power.
- **Max sizes;** since we perform continuous R&D, larger sizes can be provided upon consultation.
4 hour: 5.5m(w) x 20m(l) in a single panel.





SPECIFICATION

Single Skin Curtain Slat

The shutter curtain is made of 72mm pitch galvanized steel slats cold rolled into single or double skin forms, interlocked for strength and with the edges cut off to lock their axial movement.

Guide Rails

The guide rails are made of heavy duty 3mm thick x 46mm wide x 96mm deep profiles. Curtain hold-fast devices ensure that the curtain does not dislodge from the guide rail.

Bottom Bar

A suitably weighted steel profile 50mm tall is affixed with the leading slat to form an interface with the floor or destination wall.

Shutter Box and Access Panel

The shutter box is formed from two heavy duty endplates that are joined together using 5 hollow sections. Bent steel sheets that are folded to provide rigidity create the cover for the box while an access panel is provided for manual over-ride operation.

Barrel

The barrel is made of a heavy duty seamless steel pipe of a suitable diameter. The ends are welded with axles of suitable dia according to the size of the shutter and fixed to the right and left endplates with heavy duty sealed roller bearings.

Box Cover

The shutter box covers are made out of 0.8mm thick zinalume steel sheets,

with the edges folded to provide rigidity.

Motor Operation

The motor has a high starting torque, built-in gear box, overload protection and a built-in thermal protector. Manual over-ride crank-head is provided at the end of the motor shaft.

Push Button Control

Push button control with 'up', 'down' and 'stop' buttons are housed in a lockable push button box. The outer cover of the push button box is made of stainless steel.

Standard Activation

Fire Alarm Signal: Where fire shutters are needed to be activated by fire alarm signal, a dual fusible link (electric solenoid releaser) is used which releases the brake of the motor, upon receipt of a 24V DC, 400mA fire alarm signal. A reset pull is provided to reapply the brake on the motor.

M & E Requirements

3 phase, 415V, 50Hz, 20A power supply at shutter box location. 24V DC, 400mA, normally open fire alarm signal at fire shutter's shutter box location. Emergency power source MUST be provided at the shutter box location.

Finish

Galvanized steel only.

ferco
SHUTTERS & SEATING

24 HOUR SERVICE & MAINTENANCE
CALL US AT +65 9001 7059

SINGAPORE

Plot 247-125
Al Qusais, Industrial Area 4
P.O. Box 233962 Dubai UAE
Tel: +65 6760 8383
Fax: +971 6760 7503
sales@fercoshutters.com

DUBAI

Plot 247-125 Shed 1 & 2
Al Qusais, Industrial Area 4
P.O. Box 233962 Dubai UAE
Tel: +971 (04) 258 6433
Fax: +971 (04) 258 6533
enquiryUAE@fercoshutters.com

ABU DHABI

M-04 Abu Dhabi Finance Bldg
Tourist Club Area
Box 113651, Abu Dhabi UAE
Tel: +971 (02) 679 7609
Fax: +971 (02) 679 7608
enquiryUAE@fercoshutters.com