



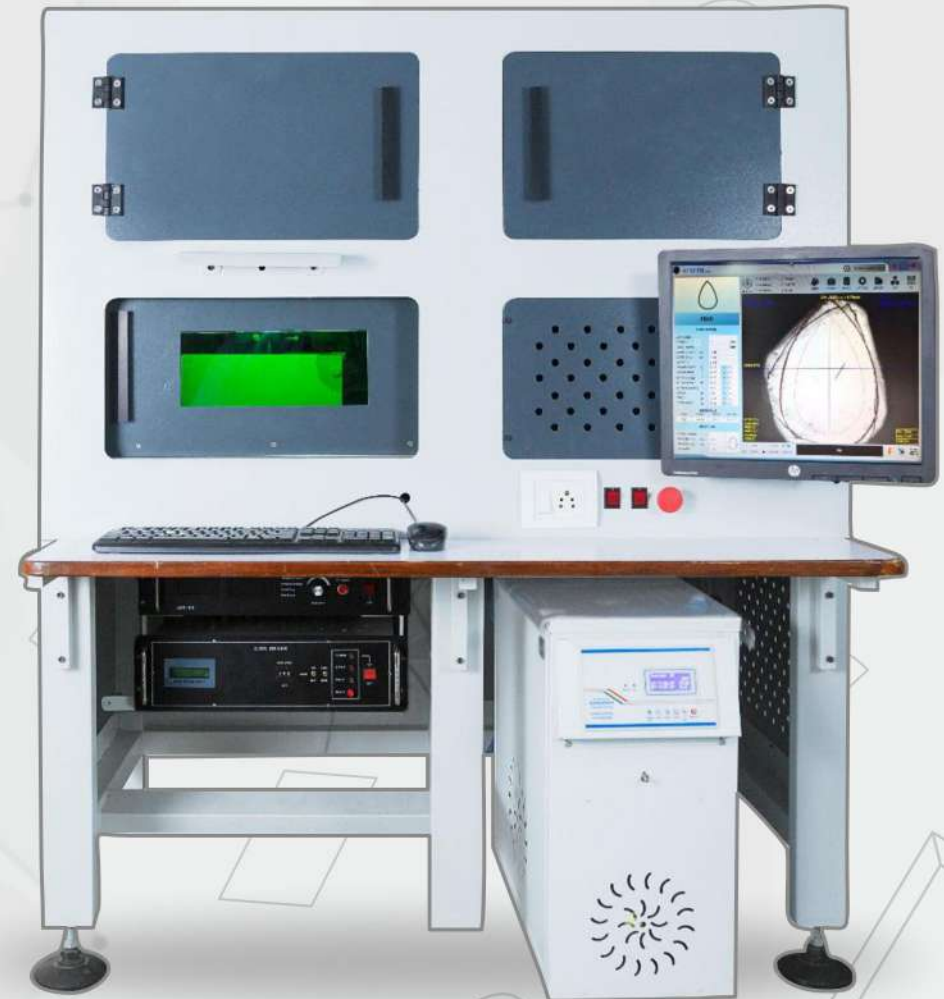
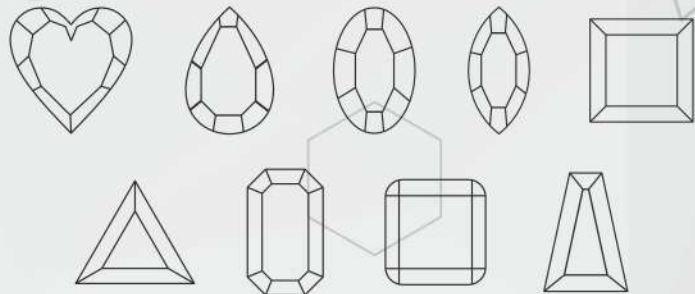
Shine

Technologies



All Fancy Shape 4P and Custom Shape

- Area Cover 14mm*14mm
- Fancy 4P Shape as per Heart, Pear, Oval, Marquise, Princess, Trillion, Emerald, Cushion, Taper, Tapered Baguette, etc...
- Also Custom Create Shape Like Half Moon, Hexagonal, Star
- 34+ Shapes Support Full 4P



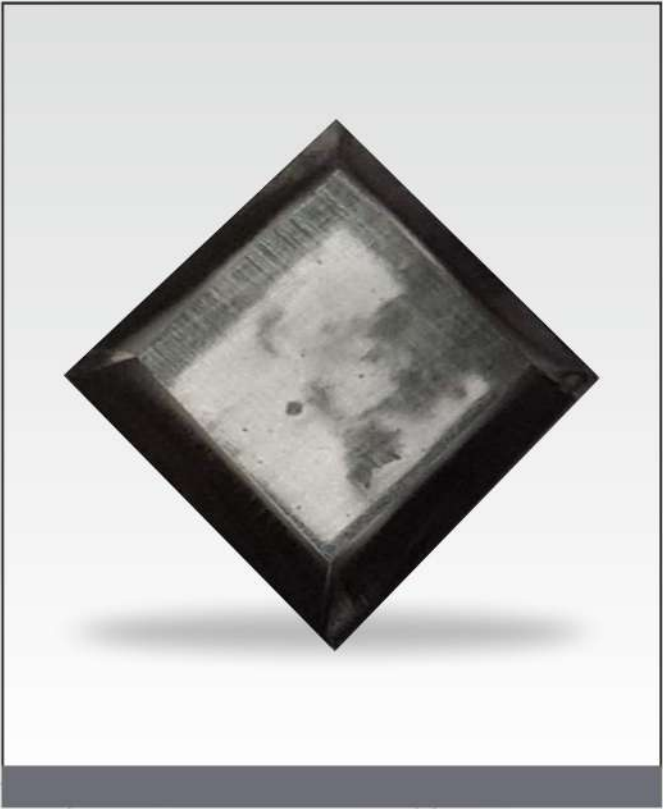
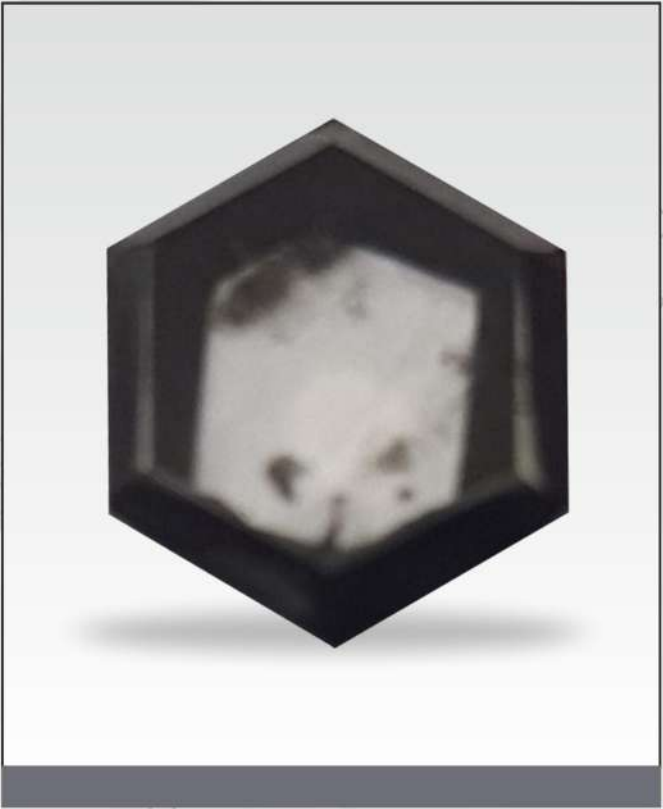
OUR FEATURE

- Specially designed for custom shape cutting application at a single set-up.
- Accurate model with symmetry gives minimum polishing time.
- Shape to match the wire frame for easily fast operating.
- Qr code scan reader for stone symmetry.
- Shape wise smart parameter select for best cutting symmetry.
- Accurate banding facility.
- Auto power and auto frequency.
- User friendly software.

Same Stitching in Sawing and Fancy 4 Process













W

S



Hitesh Panchal



+91 98252 43056



shinetechnologies_surat@yahoo.co.in



www.Shinetechnologies.co.in



U1, Diamond World, Mini Bazar,
Nr. Princess Plaza, Varachha, Surat,
Gujarat, INDIA, Pincode - 395006