

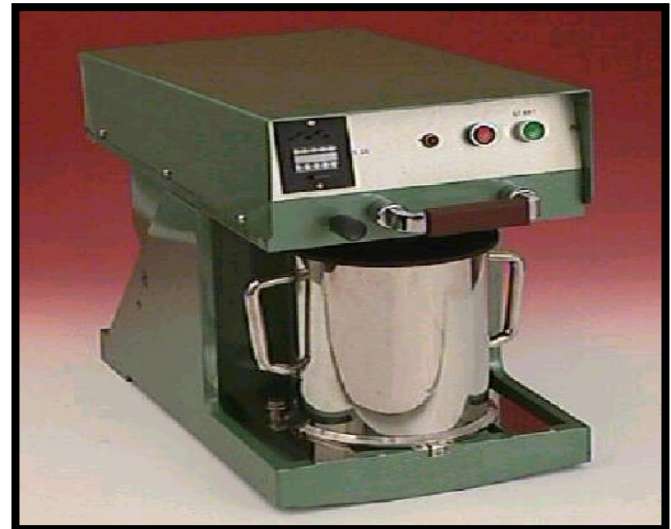


PAP-TECH ENGINEERS & ASSOCIATES

PULP DISINTEGRATOR

MODEL: PAP-3062

The Instrument is designed for standardized disintegration of pulp to a homogeneous suspension. Pivoted drive unit with stainless steel propeller and shaft. The propeller is driven by electric motor via stepped timing belt, which ensures a direct drive without slippage. Electronic Revolution counters with digital display.



TECHNICAL - SPECIFICATION

Capacity :	2 Litres.
Rotational Frequency :	2975 \pm 25 rpm.
Motor :	0.5 KW, 3 Phase, 440V AC.
Safety System :	Double Safety System permits start only when drive unit and vessel are in correct working position.

APPLICATION STANDARDS :

ISO 5263, TAPPI 205/220
SCAN C18/M2, CPPA C6

OPTION :

Mechanical Preset impulse counter on front panel for setting desired number revolution.

Digital Preset Pulse Counter on front panel for setting desired number of revolution.

Pulp container with Heating Elements and Thermostat control.