



i-Sensor

Clearer & More durable

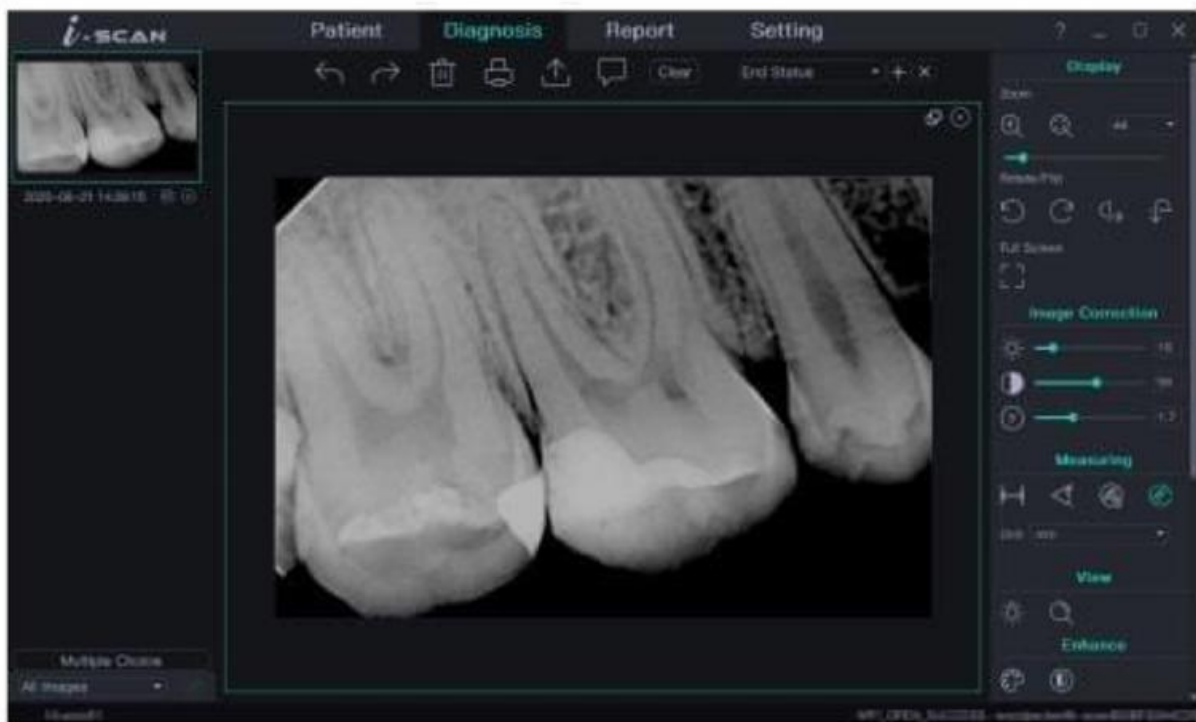


IDS Denmed
Experience. Dentistry.

Easy-to-use software

Smart and powerful software

i-Sensor provides simple and easy-to-operate software, one-click smart installation and use, and equipped with powerful image processing functions, so you can significantly and quickly improve the quality of radiographs.



**One-click
smart installation**



**User-Defined
Image Processing Tools**



**Free to use
and upgrade**

Thinnest sensor 4.4mm

With an ergonomically optimized Cut-Corners and 4.4mm thickness, the i-Sensor makes sensor placement easier than ever (plus, the thinner sensor specifically allows for better bitewing radiographs and simplified vertical bitewing acquisition.)



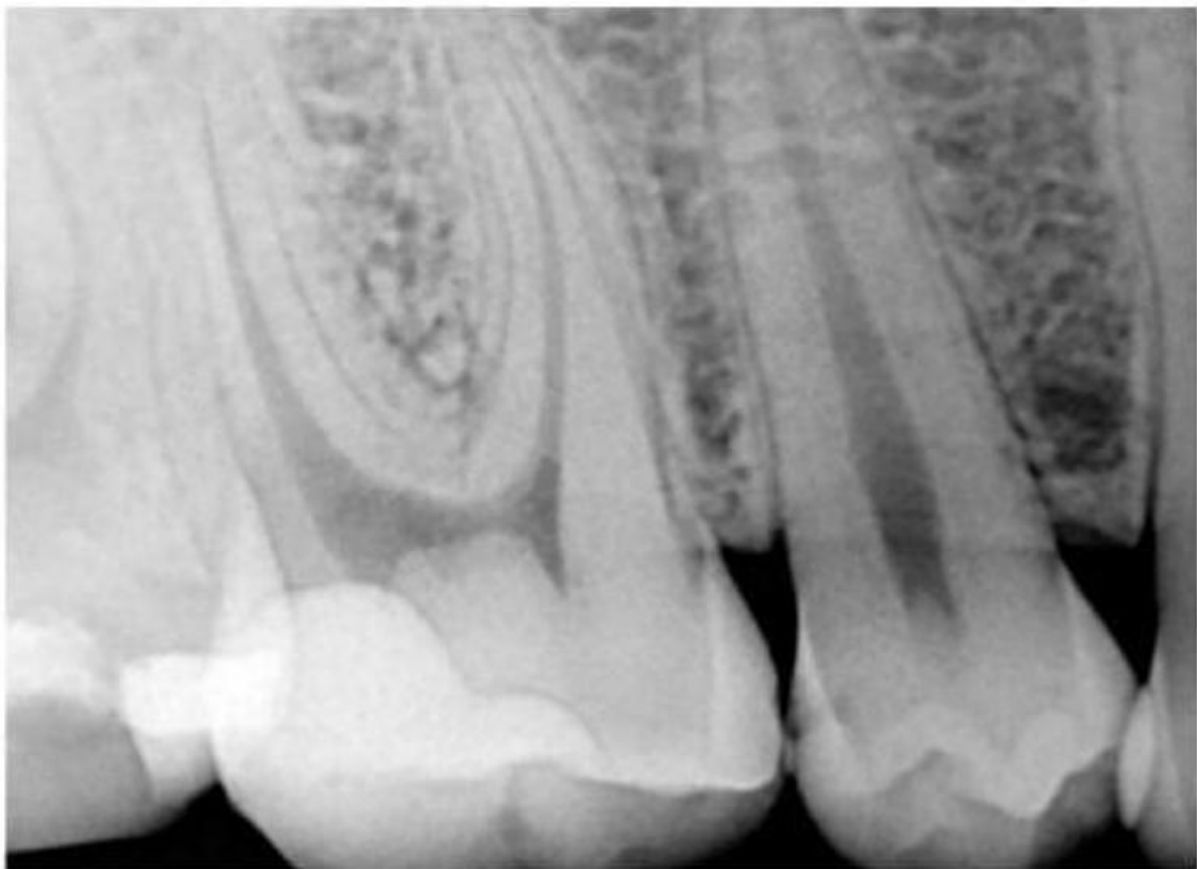
Rounded Corner

High resolution imaging

25 lp/mm theoretical resolution

With the leading 16-bit ADC chip, bringing you up to 60000+ Gray scale.

High-definition sensor up to 2.2 million pixels, more details, better picture quality with a theoretical resolution of 25 lp/mm, bringing a high level of clarity and detail to your digital radiography. Clearer image effect, so that subtle root apex bifurcation can be easily found.



Durable and Reliable

80000+ bending test

i-Sensor is designed to prevent any kind of damages in its everyday use. Based on actual usage and tens of thousands of bending experiments, the product is durable.

Robust CNC shell fusion ultrasonic welding technology brings ultra-lightweight experience and IP68 protection can be immersed in disinfectant liquid to avoid cross infection.

