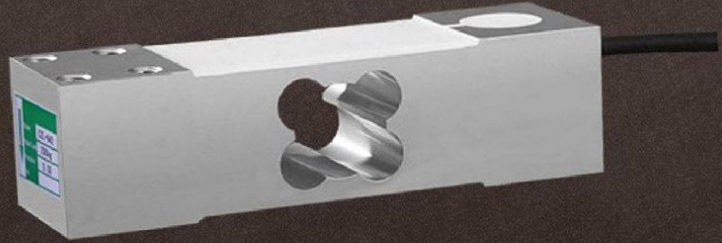


CZL-642-LOADCELL [HALL CENTER - 25 X 25]

CZL 642 GreenLable Load Cell



Model CZL 642 (Platform (25mm x 25 mm) - Greenlable) is strain gauge based loadCell constructed from Aluminum Alloy. It is economical and low profile cell. It is mainly used in check weighing. Suitable for Platform size upto 500mm X 500mm.

Features

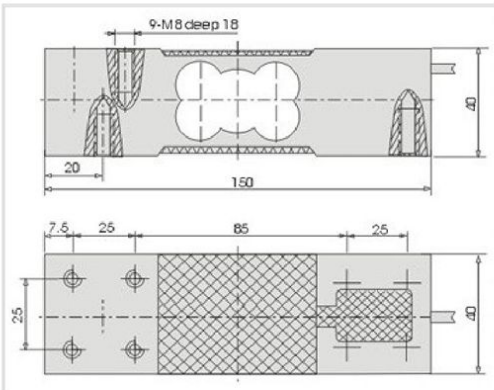
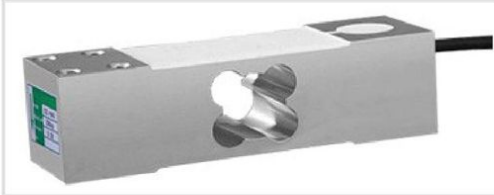
- ◆ Economical and low profile cell
- ◆ Supports Platform size upto 500mm X 500mm
- ◆ Aluminum-alloy; Colourless anodized
- ◆ Hermetically sealed with glue to IP65

Application

- ◆ Industrial Weighing Systems
- ◆ Platform Scales
- ◆ Electronic Counting Scales
- ◆ Check Weighiers etc.

Standard Capacities (Kg.)

100, 200, 300, 500



Standard Specification :

Nominal Output	2.0 ± 0.1 mV/V (mili Volt per Volt)
Precision	C3 (0.02% FSO comprehensive error)
Excitation Voltage	9 VDC - Maximum 12 VDC
Platter Size	500mm x 500mm
Safe Load	120% of Rated Capacity
Ultimate Load	150% of Rated Capacity
Non Linearity	<±0.03% of FSO (Full Scale Output)
Creep (30 minutes)	<±0.025% of FSO
Zero Balance	<±1% of FSO
Input Resistance	400 ± 10 ohms
Output Resistance	350 ± 5 ohms
Insulation resistance	Above 5000 Mega ohms
Temp. Compensation	-10°C to +40°C
Temp. Effect on zero & span	< 0.03% FSO/10°C
Material	Alluminium alloy, Colourless anodized
Cable	4mm, 3mts