

ZMARTBUILD
TRUSTED BUILDING SOLUTIONS PARTNER BY **SCG**
International

SPC Click Lock Flooring

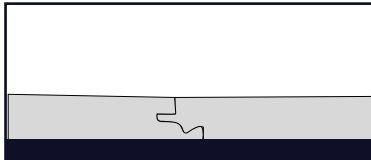
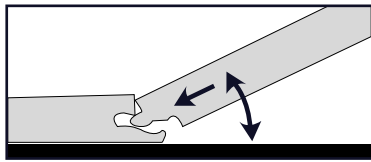
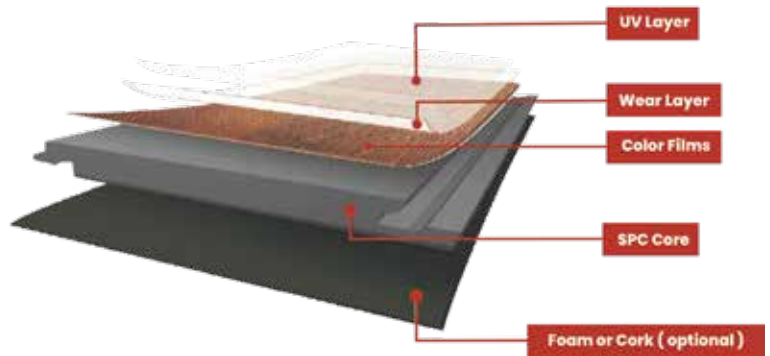


Wood Inspired ZMARTBUILD SPC Flooring

Inspired by nature and specially designed for residential and commercial applications, you will find our floors beautifully realistic and highly practical. Offering wide and impressive range of designs, finish and install formats, you can create a floor that is unique to your home and guaranteed to leave long lasting impression for years to come.

Layer Structure

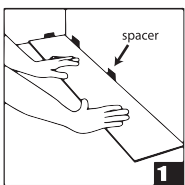
The Multi layer design and unique construction covering UV coating, wear layer, color layer, and stiff SPC core with foam backing make it durable, scratch and stain resistance. The product specifications for our SPC Click Lock are intended to service a variety of applications, including both domestic and commercial.



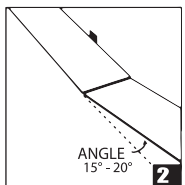
Click Lock Technology

Our Click Lock Technology comes with the Glueless Locking for Flooring, this works perfectly for both the long and short sides of the flooring panel and ensures there are no unwanted gaps or spaces between floorboards.

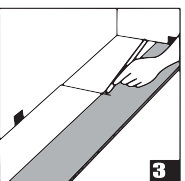
Installation Process



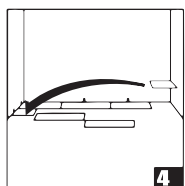
Start at a corner, place first plank with tongue side facing wall.
Use spacers to maintain an expansion space of 8-12 mm between wall and flooring.



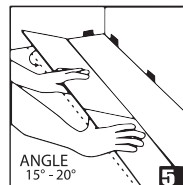
Insert 2nd plank's end tongue to 1st plank's end groove at an angle of 15° to 20°.
The plank will click into place when lowered.
Line up the edges carefully.
Planks should be flat to the floor.



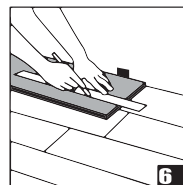
For the last plank of a row, flip a full plank to its underside and place beside the row.
Measure and mark the required length.
Use a ruler and utility knife to score the plank and snap off.
Insert as in the previous diagram.



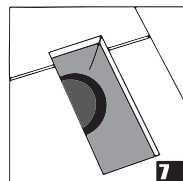
Begin next row with the last cut off piece from the previous row to stagger the pattern.



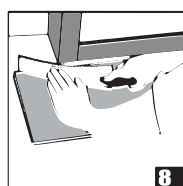
To start the second row, assemble your entire row on the subfloor before attaching it to the first row.
To attach, tilt and push the side groove of the first row at an angle of 15° to 20°.
Lower and click into place lining the edges up carefully.
Continue laying remaining planks in order.



Begin next row with the last cut off piece from the previous row to stagger the pattern.



Heating vents require an expansion room.
First, cut the plank to the correct length.
Place the cut plank at this actual position and use a ruler to measure the areas to be cut out and mark them.
Cut out the marked points allowing the necessary expansion distance.



The gap between the bottom of a door and the vinyl flooring should be 1 cm height.
To trim door frames, turn a plank upside down.
Place it next to the door frame as per diagram.
Use a handsaw and cut the necessary height so that the planks can slide easily underneath the frame.

Advantages of ZMARTBUILD SPC Click Lock Flooring



Glue-free Installation :

ZMARTBUILD SPC click lock system makes installation easy and faster with just few equipments.



Environmental Friendly :

ZMARTBUILD SPC flooring is 100% reusable with installation in a day, renovation becomes easy.



Natural Look and Feel :

SPC click lock flooring offers various colours and patterns. A best wood substitute with softer touch and feel when you walk on it and patterns inspired by wood.



Easy Maintenance :

The floors have a protected UV coating which makes the floors easy to clean and protects it from daily usage. Making it a worry free maintenance product.



Water - Resistance :

ZMARTBUILD SPC flooring material composition is water and termite resistant. It maintains thermal insulation at home and withstands wet/dry shoe stains

Technical Data

Wear Layer Thickness	ASTM F410	20 mil (0.3 mm)
Static Load	ASTM F970-17	Pass 720 psi at O.OOT
Slip Resistance	ASTM D2047-17	Dry condition : 0.42 \\/kt condition: 0.61
Staining Resistance	ASTM F925-13	Pass
Smoke Density	ASTM E662-2018	Pass 450
Resistance to Light	ASTM F1700-18a	Section 6.10 & ASTM F1515-03 (2008) Pass (< 8.0 Delta E Requirement)
Impact Resistant	ASTM F1265-03a	Pass
Heat Stability	ASTM F1514-03	Pass
Reaction to fire	ASTM E 648-2017a	Reaction to fire
Impact Sound Conduction	ASTM E-492-09	Class 2
Airborn Sound Conduction	ASTM E90-09	IIC= 55 dB - with ceiling/ 65dB
Residual Indentation	ASTM F1914	Pass
Castor Chair Resistance	ASTM D6962	< 10000 cycles
Abrasion Resistance	ASTM 4060	Pass >_ 6000 cycles
Locking System	UNCLIC	Locking System

Product Features



100% Reusable



Anti-Bacterial



Anti-termite



Water Resistant



Provides Comfortable Feeling



Scratch Resistant



High Quality Product

One stop solution with Global quality products.



Managed by Professional

Manage your project with our expert engineers. Easy installations, skilled labours.



Support at Design Stage

'Start to finish' support to overcome all the challenges.



Technical Service

Stay worry-free with Global quality products and service as we provide end to end technical support



SCC International India Pvt. Ltd

Unit No.609, 6th Floor, The Palm Spring Plaza, Golf Course Road, Gurugram, Haryana, India 122001

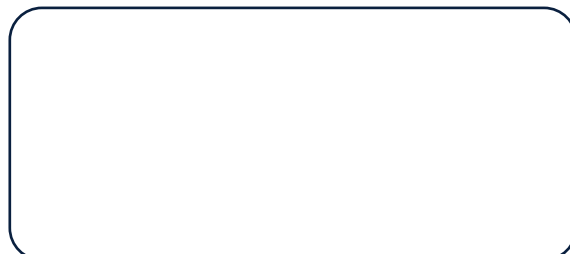
Tel (IN) : 011-411-33631

Web : www.zmartbuild.com/in

Email : info@zmartbuild.com



AUTHORISED PARTNER



14 sheets / carton box

3.13 sqm / carton box

25.06 kg / carton box

Thickness : 4 mm.

Wear layer : 0.3 mm.

Size : 1220 mm x 183 mm.



SA11

Nordic Brown



SA15

Almond Brown



SA16

Light Oak



SA17

Western Oak



SA18

Golden Teak

- Variant : 4mm thickness with (0.5 mm wear layer)*
- Variant : 5mm thickness with 0.5 mm wear Layer*
- Variant : 5mm thickness with 0.5 mm wear Layer + 1 mm EVA/IXPE Backing*

*made to order

14 sheets / carton box

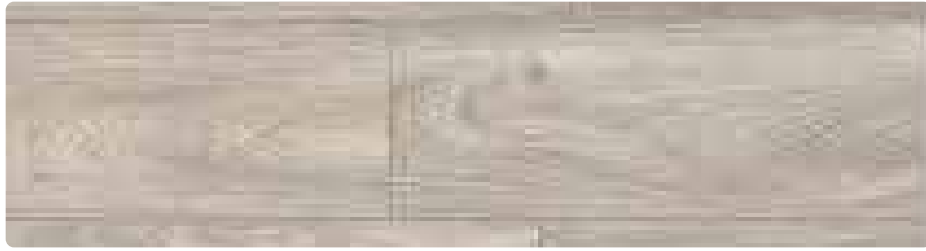
3.13 sqm / carton box

25.06 kg / carton box

Thickness : 4 mm.

Wear layer : 0.3 mm.

Size : 1220 mm x 183 mm.



SA73

Country White



SA240

Deep Brown



SA69

Silver Grey



SA110

Walnut Brown



SA114

Smoky Brown

- Variant : 4mm thickness with (0.5 mm wear layer)*
- Variant : 5mm thickness with 0.5 mm wear Layer*
- Variant : 5mm thickness with 0.5 mm wear Layer + 1 mm EVA/IXPE Backing*

*made to order

14 sheets / carton box

3.13 sqm / carton box

25.06 kg / carton box

Thickness : 4 mm.

Wear layer : 0.3 mm.

Size : 1220 mm x 183 mm.



TA 004

Black Cedar



TA 010

White Beech



TA 019

Ebony



TA 020

Red Cherry



TA 021

Rosewood



TA 022

Apple Wood

- Variant : 4mm thickness with (0.5 mm wear layer)*
- Variant : 5mm thickness with 0.5 mm wear Layer*
- Variant : 5mm thickness with 0.5 mm wear Layer + 1 mm EVA/IXPE Backing*

*made to order