

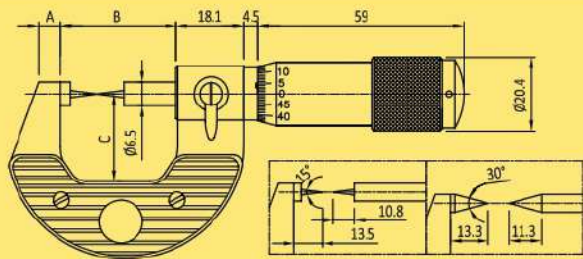


Special External Micrometer

POINT



MMC25-P2



Measuring Range mm	Reading mm	Point Angle	Type	A mm	B mm	C mm	Measuring Range inch	Reading inch	Type
0 -25	0.01	15°	MMC25-P1	7.1	57.5	30.5	0 -1"	0.001"	INC1-P1
		30°	MMC25-P2						INC1-P2
25-50	0.01	15°	MMC50-P1	8	83	45	1-2"	0.001"	INC2-P1
		30°	MMC50-P2						INC2-P2
50-75	0.01	15°	MMC75-P1	8	108	58	2-3"	0.001"	INC3-P1
		30°	MMC75-P2						INC3-P2
75-100	0.01	15°	MMC100-P1	8	133	67.5	3-4"	0.001"	INC4-P1
		30°	MMC100-P2						INC4-P2

FEATURES

- Spindle made from stainless steel for rust prevention
- Measuring Faces – 15° & 30° hardened steel points having radius 0.3 mm approximately
- An in-built ratchet in the thimble
- Sharp laser marking for better visibility & durability
- Heat insulating grip plates cover the entire handling portion of the micrometer frame
- Robust design withstands toughest workshop conditions

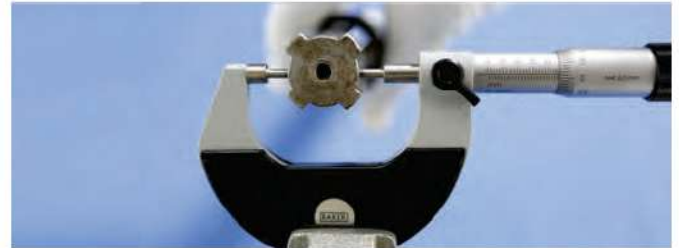
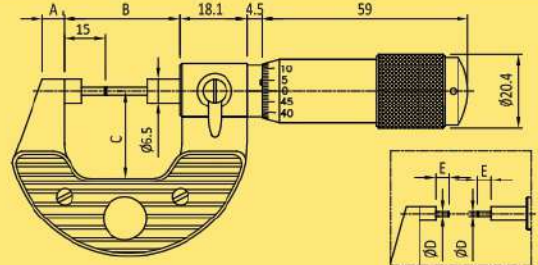
Application

For measuring web thickness of drills, small grooves, keyways.

SPLINE



MMC25-S3



Measuring Range mm	Reading mm	Type	A mm	B mm	C mm	D mm	E mm	Measuring Range inch	Reading inch	Type				
0 -25	0.01	MMC25-S2	7.1	57.5	30.5	2	5	0 -1"	0.001"	INC1-S2				
		MMC25-S3				3	8			INC1-S3				
25-50	0.01	MMC50-S3	8	83	45	3	8	1-2"	0.001"	INC2-S3				
50-75		MMC75-S3				8	108			58	3	8	2-3"	INC3-S3
75-100		MMC100-S3				8	133			67.5	3	8	3-4"	INC4-S3

FEATURES

- Spindle made from stainless steel for rust prevention
- Measuring faces: carbide tipped available in two types Ø2 x 5 mm & Ø3 x 8 mm
- An in-built ratchet in the thimble
- Sharp laser marking for better visibility & durability
- Heat insulating grip plates cover the entire handling portion of the micrometer frame
- Robust design withstands toughest workshop conditions

Application

For measuring recesses, grooves, Splines, Slots, Keyways & small parts in precision work.

Special External Micrometer



TUBE



MMC25-T1

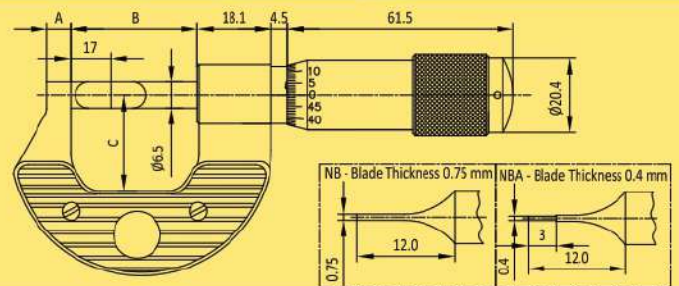
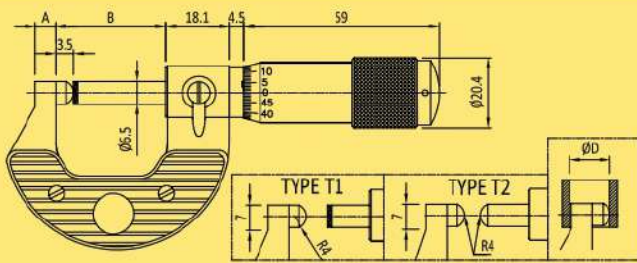


MMC25-T2

BLADE



MMC25-NB



Measuring Range mm	Reading mm	Type	A mm	B mm	Min. Ø D mm	Measuring Range inch	Reading inch	Type
0 -25	0.01	MMC25-T1	5.5	32.5	9.5	0 -1"	0.001"	INC1-T1
		MMC25-T2						INC1-T2
25-50	0.01	MMC50-T1	6	57.5	10	1-2"	0.001"	INC2-T1
		MMC50-T2						INC2-T2
50-75	0.01	MMC75-T1	8	83	12	2-3"	0.001"	INC3-T1
		MMC75-T2						INC3-T2
75-100	0.01	MMC100-T1	8	108	12	3-4"	0.001"	INC4-T1
		MMC100-T2						INC4-T2

Measuring Range mm	Reading mm	Type	A mm	B mm	C mm	Measuring Range inch	Reading inch	Type
0 -25	0.01	MMC25-NB	7.1	57.5	30.5	0-1"	0.001"	INC1-NB
		MMC25-NBA						INC1-NBA
25-50	0.01	MMC50-NB	8	83	45	1-2"	0.001"	INC2-NB
		MMC50-NBA						INC2-NBA
50-75	0.01	MMC75-NB	8	108	58	2-3"	0.001"	INC3-NB
		MMC75-NBA						INC3-NBA
75-100	0.01	MMC100-NB	8	133	67.5	3-4"	0.001"	INC4-NB
		MMC100-NBA						INC4-NBA

NOTE-
NB-Blade Thickness 0.75 mm
NBA-Blade Thickness 0.40 mm

FEATURES

- Spindle made from stainless steel for rust prevention
- Measuring faces: hardened steel available in two types:
T1 - one end spherical
T2 - both ends spherical
- An in-built ratchet in the thimble
- Sharp laser marking for better visibility & durability
- Heat insulating grip plates cover the entire handling portion of the micrometer frame
- Robust design withstands toughest workshop conditions

Application

For measuring curved surfaces & wall thickness of tubes, rings, bearings etc.

FEATURES

- Spindle made from stainless steel for rust prevention
- Measuring faces: hardened steel
- An in-built ratchet in the thimble
- Sharp laser marking for better visibility & durability
- Heat insulating grip plates cover the entire handling portion of the micrometer frame
- Robust design withstands toughest workshop conditions

Application

For measuring small grooves on shaft dia., keyways and other hard to reach geometries / profiles.

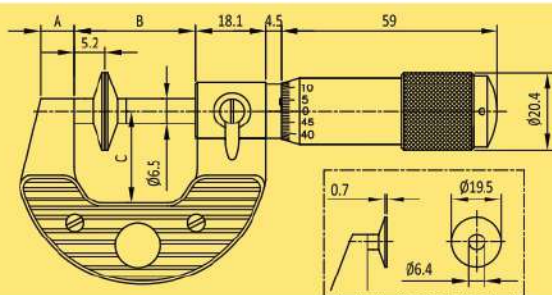
Special External Micrometer



DISC: ROTATING



MMC25-D

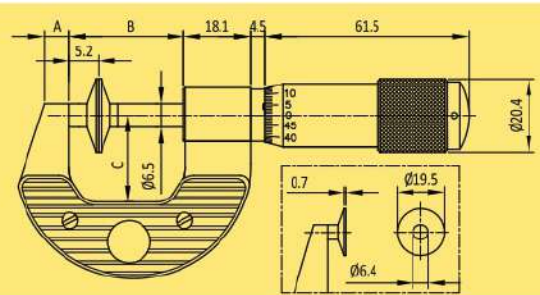


Measuring Range mm	Reading mm	Type	A mm	B mm	C mm	Measuring Range inch	Reading inch	Type
0 -25	0.01	MMC25-D	10	36	29	0 -1"	0.001"	INC1-D
25-50		MMC50-D	7.1	61.5	31	1-2"		INC2-D
50-75		MMC75-D	8	87	45.5	2-3"		INC3-D
75-100		MMC100-D	5.9	110	57.5	3-4"		INC4-D

DISC: NON-ROTATING



MMC25-ND



Measuring Range mm	Reading mm	Type	A mm	B mm	C mm	Measuring Range inch	Reading inch	Type
0 -25	0.01	MMC25-ND	10	36	29	0 -1"	0.001"	INC1-ND
25 - 50		MMC50-ND	7.1	61.5	31	1 - 2"		INC2-ND
50 -75		MMC75-ND	8	87	45.5	2 - 3"		INC3-ND
75 -100		MMC100-ND	5.9	110	57.5	3 - 4"		INC4-ND

FEATURES

- Spindle made from stainless steel for rust prevention
- Measuring faces: hardened steel
- An in-built ratchet in the thimble
- Sharp laser marking for better visibility & durability
- Heat insulating grip plates cover the entire handling portion of the micrometer frame
- Robust design withstands toughest workshop conditions

Application

For measuring root tangent length of spur & helical gears, recess distances etc.

FEATURES

- Non-rotating spindle (only axial moment of spindle)
- Spindle made from stainless steel for rust prevention
- Measuring faces: hardened steel
- An in-built ratchet in the thimble
- Sharp laser marking for better visibility & durability
- Heat insulating grip plates cover the entire handling portion of the micrometer frame
- Robust design withstands toughest workshop conditions

Application

For measuring thickness of paper, felt, rubber, fabric etc.