

AV-260 Cast Iron Vertical Inverted Bucket Type Steam Trap

Features

With renewable Stainless Steel working parts
Screwed Female BSP Parallel Threads as per BS-21

Test Pressure

Body : 300 Psig (Hyd.)
Working pressure suitable saturated steam upto 150 Psig

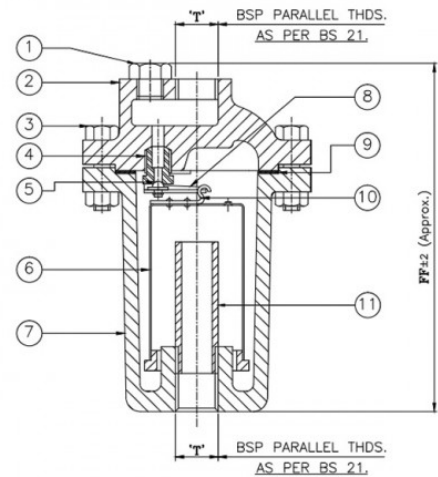
Suitability

Water, Steam



Material Combination

P.No.	Name of Part	Material	Specification
1	Plug	Carbon Steel	-
2	Cover	Cast Iron	IBR 86 to 93 Gr.A
3	Bolts and Nuts	Carbon Steel	-
4	Valve Seat	Stainless Steel	ASTM A276 Type 410
5	Ball Seat	Stainless Steel	ASTM A276 Type 410
6	Bucket	Stainless Steel	ASTM A276 Type 304
7	Body	Cast Iron	IBR 86 to 93 Gr.A
8	Valve Lever	Stainless Steel	ASTM A276 Type 304
9	Gasket	C.A.F.	-
10	Hook	Stainless Steel	ASTM A276 Type 304
11	Syphon Pipe	Carbon Steel	-



Dimensional Data

Nominal Size (mm)	FF ±2	T
15	210	1/2"
20	210	3/4"
25	275	1"
32	395	1.1/4"
40	395	1.1/2"
50	452	2"