

AV-268 C.S.S. Wafer Type Non Slam Check Valve

Features

Suitable for Insertion between PN-10/PN-16/Class-150/BS-10 Table-E/F

Test Pressure

Body : 24 Bar (Hyd.)

Seat : 17.6 Bar (Hyd.)

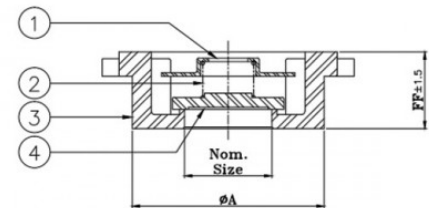
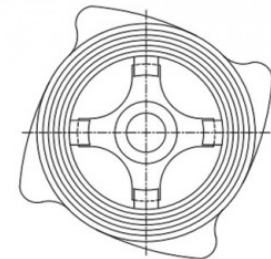
Suitability

Water, Steam, Oil



Material Combination

P.No.	Name of Part	Material	Specification
1	Spring Cover	Stainless Steel	AISI 304
2	Spring	Stainless Steel	-
3	Body	C.S.S.	ASTM A351 CF8
4	Disc	Stainless Steel	AISI 304



Dimensional Data

Nominal Size (mm)	FF ±1.5	ØA
15	16	38
20	20	47
25	22	54
40	32	76
50	40	93