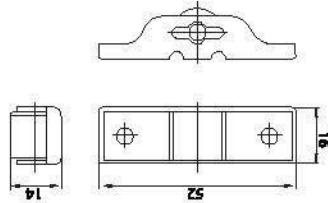


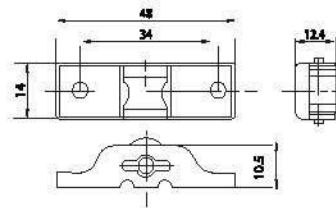
NBR001

- Single Roller
- Load Capacity : 35kg/Pair
- Frame Material : SS430
- Wheel Material : POM



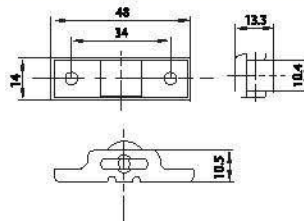
NBR002

- Single Roller
- Load Capacity : 35kg/Pair
- Frame Material : SS430
- Wheel Material : POM



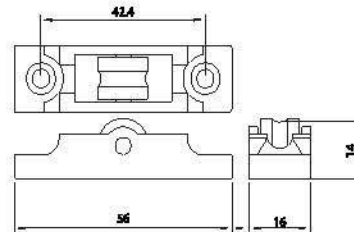
NBR003

- Single Roller
- Load Capacity : 30kg/Pair
- Frame Material : SS430
- Wheel Material : POM



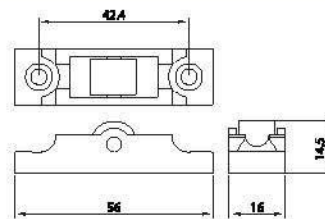
NBR004

- Single Roller
- Load Capacity : 30kg/Pair
- Frame Material : SS430
- Wheel Material : POM



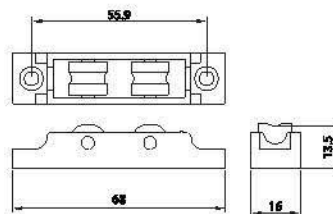
NBR005

- Single Roller
- Load Capacity : 40kg/Pair
- Frame Material : Zinc alloy
- Wheel Material : Q235



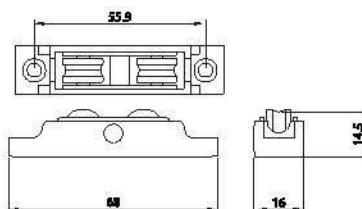
NBR006

- Single Roller
- Load Capacity : 40kg/Pair
- Frame Material : Zinc alloy
- Wheel Material : Q235



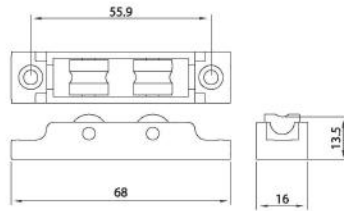
NBR007

- Double Roller
- Load Capacity : 50kg/Pair
- Frame Material : Zinc alloy
- Wheel Material : Q235/POM
- Surface Treatment : Zinc Plated



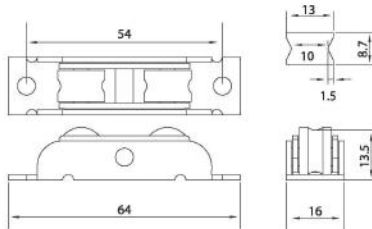
NBR008

- Double Swing Roller
- Load Capacity : 55kg/Pair
- Frame Material : Zinc Alloy
- Wheel Material : Q235
- Surface Treatment : Chrome Plated



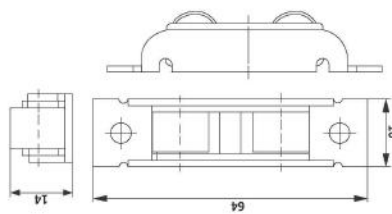
NBR009

- Double Roller
- Load Capacity : 55kg/Pair
- Frame Material : Zinc Alloy
- Wheel Material : POM
- Surface Treatment : Chrome Plated



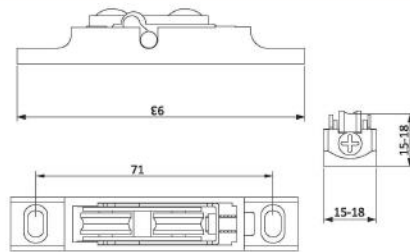
NBR010

- Double Swing Roller
- Load Capacity : 55kg/Pair
- Frame Material : SS430
- Wheel Material : POM



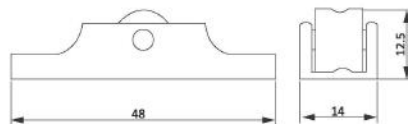
NBR011

- Double Swing Roller
- Load Capacity : 55kg/Pair
- Frame Material : SS430
- Wheel Material : POM



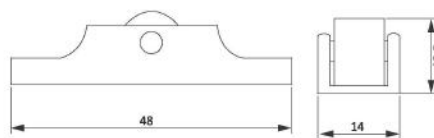
NBR012

- Adjustable window roller
- Load Capacity : 55kg/Pair
- Frame Material : Zinc Alloy
- Wheel Material : POM
- Surface Treatment : Chrome Plated



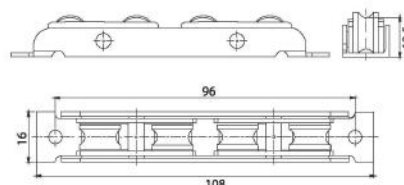
NBR0013

- Single Roller
- Load Capacity : 30kg/Pair
- Frame Material : Alluminium
- Wheel Material : Q235



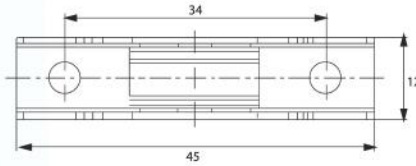
NBR0014

- Single Roller
- Load Capacity : 30kg/Pair
- Frame Material : Alluminium
- Wheel Material : Q235



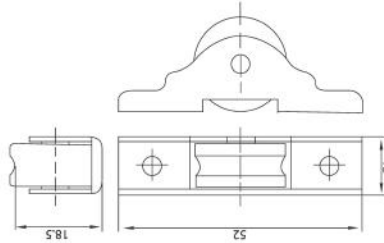
NBR015

- Heavy Swing Window Roller
- Load Capacity : 65kg/Pair
- Frame Material : SS430
- Wheel Material : POM



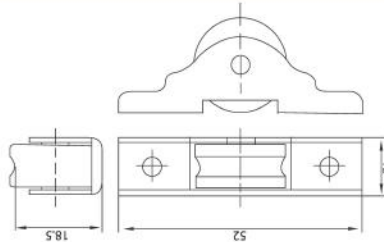
NBR016

- Window Roller
- Load Capacity :30kg/Pair
- Frame Material : SS430
- Wheel Material : POM



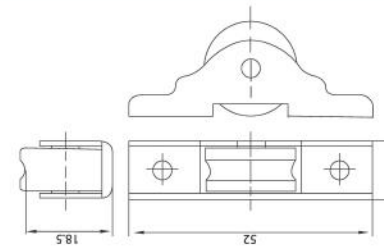
NBR017

- Single Roller with Bearing
- Load Capacity 40kg/Pair
- Frame Material : SS 430
- Wheel Material : POM



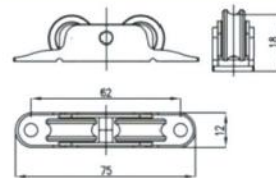
NBR018

- Single Roller with Bearing
- Load Capacity 40kg/Pair
- Frame Material : SS 430
- Wheel Material : POM



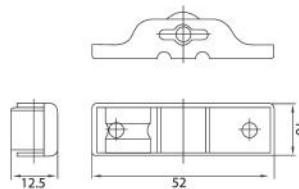
NBR019

- Single Roller with Bearing
- Load Capacity 30kg/Pair
- Frame Material : MS
- Wheel Material : POM



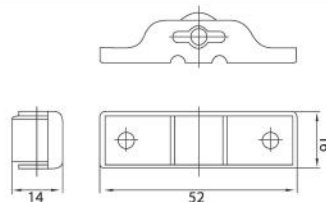
NBR020

- Double Roller with Bearing
- Load Capacity 90kg/Pair
- Frame Material : SS 403
- Wheel Material : POM



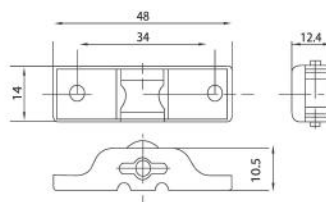
NBR021

- Single Roller
- Load Capacity 35kg/Pair
- Frame Material : Zinc Plating
- Wheel Material : POM



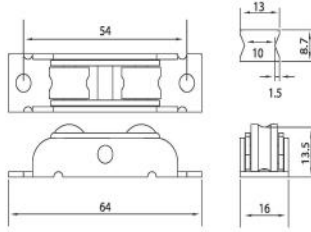
NBR022

- Single Flat Roller
- Load Capacity 35kg/Pair
- Frame Material : Zinc Plating
- Wheel Material : POM



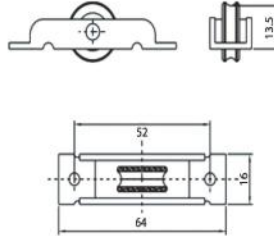
NBR023

- Single Roller
- Load Capacity 30kg/Pair
- Frame Material : Zinc Plating
- Wheel Material : POM



NBR024

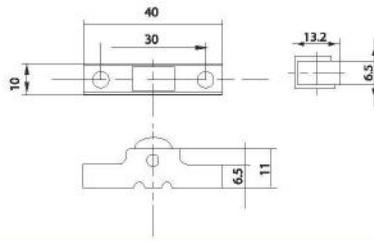
- Double Swing Window Roller
- Load Capacity : 50kg/Pair
- Frame Material : Zinc Plating
- Wheel Material : POM



NBR025

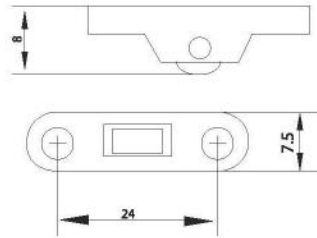
- Single Roller with Bearing
- Load Capacity : 55kg/Pair
- Frame Material : SS430
- Wheel Material : POM





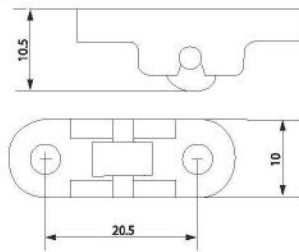
M1

- SS Mesh Roller
- Load Capacity : 20kg/Pair
- Frame Material : SS430
- Wheel Material : POM



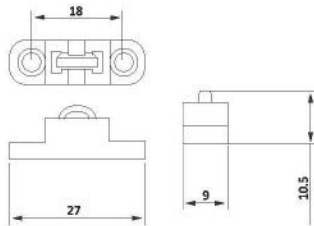
M2

- 7.5mm Mesh Roller
- Load Capacity : 10kg/Pair
- Frame Material : Nylon
- Wheel Material : Brass



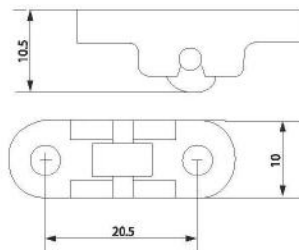
M3

- 10mm Mesh Roller
- Load Capacity : 15kg/Pair
- Frame Material : Nylon
- Wheel Material : Brass



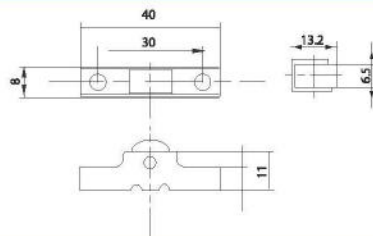
M4

- 9mm Mesh Roller
- Load Capacity : 12kg/Pair
- Frame Material : Nylon
- Wheel Material : Brass



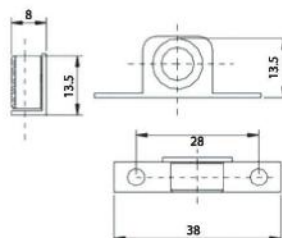
M5

- 10mm Mesh Roller
- Load Capacity : 15kg/Pair
- Frame Material : Nylon
- Wheel Material : Brass



M6 (Simta Roller)

- 8mm Mesh Roller
- Load Capacity : 10kg/Pair
- Frame Material : MS
- Wheel Material : Pom



M7

- 8mm Mesh Roller
- Load Capacity : 10kg/Pair
- Frame Material : SS430
- Wheel Material : Pom