

Other Software

Presto! BizCard

Windows
Mac OS

Presto! BizCard lets you scan business cards to convert and organize important contact information into a searchable database.

EVERNOTE

Windows
Mac OS

Evernote is a cloud based data management application. The CaptureOnTouch software comes equipped with an option to send and store data (scanned images, photos, memos, etc.) to the Evernote server.

OmniPage

Windows

OmniPage converts original paper documents into editable electronic files through OCR.

PaperPort

Windows

PaperPort is a file management application renowned for its intuitive and use-friendly graphic interface, making it easy to store, organize, and retrieve your digital documents.

eCopy® PDF Pro Office

Windows

eCopy PDF Pro Office instantly creates 100% industry-standard, universally viewable PDFs files, and converts static PDF documents into editable files and useful information. eCopy PDF Pro Office allows you to attain the flexibility of a universal document format for higher productivity and seamless information exchange.

Presto! PageManager

Mac OS

Presto! PageManager promptly puts your documents on the computer screen where they can be easily arranged and sorted. In addition to the above applications, the DR-C225 / DR-C225W can be used with a wide variety of ISIS- or TWAIN-based scanning software available on the market.

CaptureOnTouch Mobile

CaptureOnTouch Mobile is scanning software for smartphones and tablets. Using this software, you can easily scan images from a wirelessly connected scanner, and then upload them to a cloud service. It's available through the App Store and Google Play, but only for the DR-C225W.

Canon COTM



DR-C225 / DR-C225W Specifications

Type	Desktop sheet-fed scanner
Document size	Plain paper: U-turn path Width: 50.8 to 216 mm (2" to 8.5") Length: 70 to 356 mm (2.76" to 14") Straight path Width: 50.8 to 216 mm (2" to 8.5") Length: 53.9 to 356 mm (2.12" to 14") Use Long Document mode to scan documents up to 3,000 mm (118.1") long.
	Business card: 50 x 53.9 mm (1.97" x 2.12") or larger
	Plastic card: 53.9 x 85.5 mm (2.12" x 3.37") (ISO standard) Embossed cards can be scanned.
Document thickness	Plain paper: U-turn path 52 to 128 g/m ² (0.06 to 0.15 mm) Straight path 40 to 209 g/m ² (0.05 to 0.25 mm) Business card: 300 g/m ² (140 lb bond) 0.35 mm (0.0138") or less Plastic card: 0.76 mm (0.03") or less
Document feeding	Automatic sheet feeding
Feeding capacity	6 mm stack (including curls) or 30 sheets of 80g/m ² (20 lb bond)
Scanning element	CMOS CIS
Light source	LED (red, green, and blue)
Scanning side	Simplex / Duplex, Skip Blank Page, Folio
Scanning modes	Black and white, Error diffusion, Advanced Text Enhancement, Advanced Text Enhancement II (for Windows only), 256-level grayscale, 24-bit color
Scanning resolutions	150 x 150 dpi, 200 x 200 dpi, 300 x 300 dpi, 400 x 400 dpi, 600 x 600 dpi
Scanning speed *1	Simplex 25 ppm Duplex 50 ipm
Interface	Hi-speed USB 2.0
Software	Windows: ISIS/TWAIN driver, CaptureOnTouch, Presto! BizCard, OmniPage, PaperPort, eCopy PDF Pro Office, Evernote *2 Mac *3: TWAIN driver, CaptureOnTouch, Presto! BizCard, Presto! PageManager, Evernote *2
Dimensions (W x D x H)	300 mm (11.81") x 220 mm (8.66") x 156 mm (6.14") with the feed tray closed
Weight	DR-C225: Approx. 2.7 kg, DR-C225W: Approx. 2.8 kg
Power requirements	AC100 to 240 V (50/60Hz)
Power consumption	DR-C225: Scanning: 12.7 W or less (120V) 12.8 W or less (200V), Sleep: 1.7 W or less (120V) 1.8 W or less (200V), OFF: 0.5 W or less DR-C225W: Scanning: 15.6 W or less, Sleep: 4.3 W or less (120V) 4.4 W or less (200V), OFF: 0.5 W or less
Operating environment	Temperature: 10°C to 32.5°C (50°F to 90.5°F) Humidity: 20% to 80%
Options / consumables	Flatbed Scanner Unit 101/201(DR-C225 only), Exchange Roller Kit (feed roller and retard roller)

DR-C225W Specifications

Basic wireless LAN specifications	Wireless standard: IEEE802.11b/g/n (2.4 GHz only) Frequency: 2.4 GHz band Transfer method: IEEE802.11b: DS-SS system, IEEE802.11g: OFDM system IEEE802.11n: MIMO-OFDM system Data rate *4: IEEE802.11b: Up to 11 Mbps, IEEE802.11g: Up to 54 Mbps IEEE802.11n: Up to 300 Mbps Security: WPA-PSK (TKIP/AES), WPA2-PSK (TKIP/AES) Easy setting: WEP (64/128 bit) Connection modes: WPS
-----------------------------------	--

*1 Actual scanning speed may vary depending on your system configuration and PC. *2 Installed via Internet connection. *3 Requires Mac OS X 10.4.11 or later.
*4 Varies according to environmental conditions.
Specifications are subject to change without notice.

Canon and the Canon logo are registered trademarks of Canon Inc. in the United States and may also be trademarks or registered trademarks in other countries. imageFORMULA is a trademark of CANON ELECTRONICS INC. Microsoft, Windows and SharePoint are registered trademarks of Microsoft Corporation in the United States and other countries. Apple and OS X are registered trademarks of Apple Inc. in the United States and other countries. Wi-Fi, Wi-Fi Alliance, the Wi-Fi CERTIFIED logo and the Wi-Fi Protected Setup logo are registered trademarks of the Wi-Fi Alliance. Wi-Fi CERTIFIED and the Wi-Fi Protected Setup are trademarks of the Wi-Fi Alliance. Evernote is trademark or registered trademarks of Evernote Corporation. Other product and company names herein may be the trademarks of their respective owners.



ENERGY STAR and the ENERGY STAR mark are registered U.S. trademarks.

Canon

Canon India Private Limited
7th Floor, Tower B, Building #5
DLF Cyber Terraces, DLF Phase III
Gurgaon - 122002 Haryana, India
Tel: 91-124-416 0000
Fax: 91-124-416 0011
www.canon.co.in

DEALER'S STAMP

Printed in INDIA

Canon

imageFORMULA
DR-C225
DR-C225W

**THIS COMPACT SPACE-SAVING
SCANNER NOW COMES
IN A WIRELESS MODEL**

The U-turn path minimizes this scanner's footprint, freeing up important desk space for other work. Yet contained in the slim body is a high-speed, high-resolution scanner. Using the wireless-equipped DR-C225W opens up the scanning environment even more.

Win&Mac
Hybrid



THIS SLIM, HIGH-SPEED, HIGH IMAGE QUALITY SCANNER NOW HAS A WIRELESS OPTION.

With the use of a U-turn path, there is no need to leave a space in front of the scanner for document delivery, resulting in a neat, slim body for space-saving operation. In addition, the DR-C225W wireless model gives you even more freedom in installation. As well as allowing high-speed scanning of 25 ppm* in either color or back and white, the document feed can handle many different types of documents. And the new CaptureOnTouch makes easy work of day-to-day scanning tasks. *A4, Portrait, 200dpi (simplex)

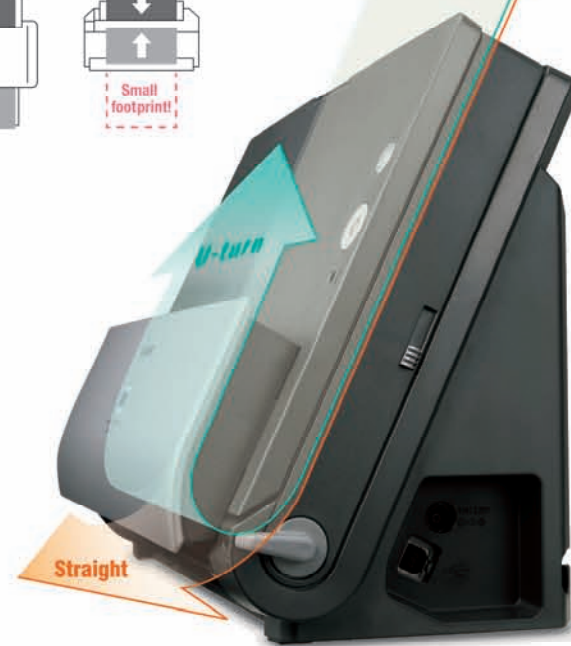
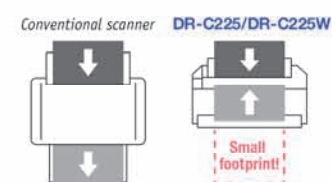
DR-C225
DR-C225W



A full range of powerful functions

■ A slim body that saves space

Once a document is fed in, it follows a U-turn path and is discharged at the front section of the main unit. This eliminates the need to leave space in front for document delivery and results in outstanding space-saving. Also, switching to straight ejection path makes it possible to scan cards and other thick documents.



■ High-speed scanning in a compact package

	Simplex (ppm)		Duplex (ipm)	
	B&W/Grayscale	Color	B&W/Grayscale	Color
200dpi	25	25	50	50
300dpi	25	15	50	30

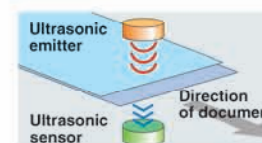
*A4, Portrait, using USB 2.0

■ Handy face-up feeding

When scanning, users can orient the document the right way up with the printed side facing them. This is also how it will appear on the display screen, thus making it easy to confirm the order of multiple sheets for increased scanning efficiency.

■ Reliable double feed detection

As documents are fed in, the upper sensor transmits ultrasonic waves that are received by the lower sensor. If multiple feeding should occur, document feeding is automatically halted and a double feed is indicated, so there is no risk of data loss during scanning.

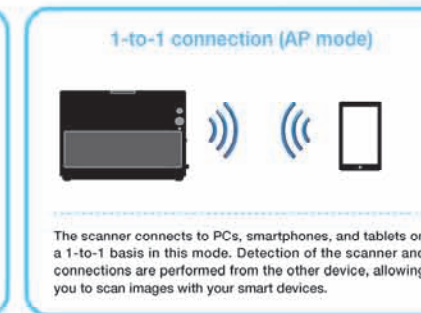
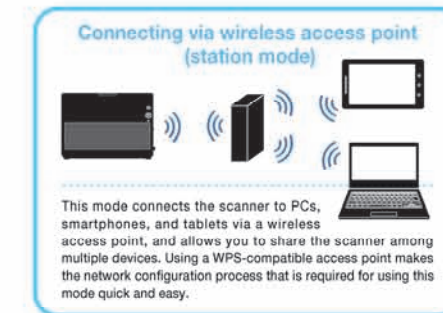


Wireless

The wireless model further expands the range of possibilities.

DR-C225W

The DR-C225W comes equipped with Wi-Fi connectivity, so a number of compatible devices such as PCs, smartphones and tablets can share a scanner without the need for USB cables. The DR-C225W offers a new style of scanning that utilizes the scan data across multiple devices.



Various Image Processing Options

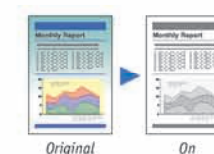
● Full Auto Mode

A Full Auto Mode is available with the color mode, page size, resolution, and text orientation automatically determined based on the contents of the document. This mode allows you to scan documents that contain pages of varying type under conditions that best suit each type. The mode also includes the Skip Blank Page function for efficient scanning of only the necessary pages.

● Auto Color Detection

This function automatically determines which documents of a mixed batch should be saved in color, grayscale or B&W, so it's no longer necessary to separate B&W and color documents prior to scanning.

● Advanced Text Enhancement



● Auto Size Detection



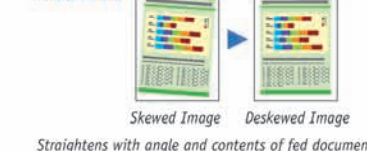
● Character Emphasis



● Skip Blank Page



● Deskew

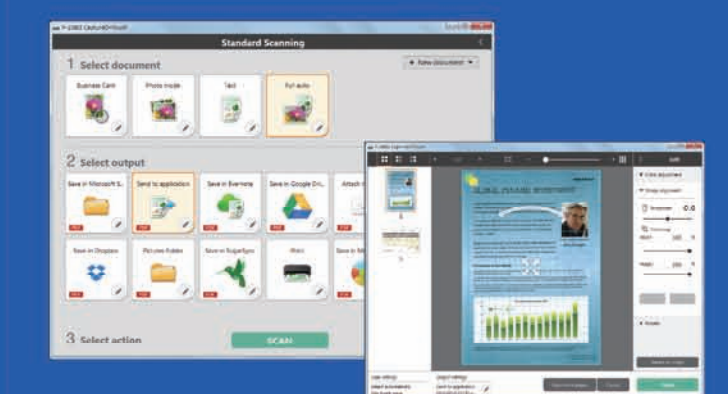


● Folio Mode



Enhanced ease of use and intelligibility

■ CaptureOnTouch



● Now more intuitive and more convenient

The TOP screen is laid out panel-style with large icons, allowing more intuitive operation. The items on the setup screen have also been scaled down to give a simple design. Two scanning methods are available to satisfy a variety of needs including adhoc and daily scanning. As well as "Standard Scanning" where scanning mode and output mode can be separately configured, there is "Scanning Shortcut" where the specific scanning mode and output method are preconfigured, allowing one-click operation. It's also possible to edit scanned images, eliminating the need to redo a scan if the scanned data differs from the image that you want to save. What's more, you can scan to up to three outputs concurrently.

● Enhanced Cloud Connectivity

Connection to cloud-based services is now even more comprehensive. In addition to Evernote, SharePoint and Google Drive, scanning destinations have been expanded to include SugarSync, OneDrive and Dropbox.

