

Dolphins



CH170564SL
WT: 0.85 gm



CH170565SL
WT: 1.1 gm



CH170566SL
WT: 0.9 gm



CH170567SL
WT: 1.35 gm



CH170667SL
WT: 0.8 gm



CH170670DC
WT: 0.9 gm



CH170668SL
WT: 0.85 gm



JCH128890SL
WT: 1.4 gm



JCH128891A18SL
WT: 0.071.08 gm



JCH170096A18SL
WT: 0.03/1.17 gm



JCH170099A18EN
WT: 0.1/1.55 gm



JCH1286552T
WT: 1.68 gm

Dolphins

Weight = Stone Wt. / Net Wt.



PD126329A18SL
WT: 0.02/0.88 gm



PD190034SL
WT: 1.55 gm



PD1607872T
WT: 1.4 gm



PD1900332T
WT: 1.6 gm



PD1900522T
WT: 1.55 gm



PD1900542T
WT: 1.05 gm



PD1901132T
WT: 1.15 gm



47821SL
WT: 1.9 gm



JP125152SL
WT: 1.15 gm



JP125329SL
WT: 2.4 gm



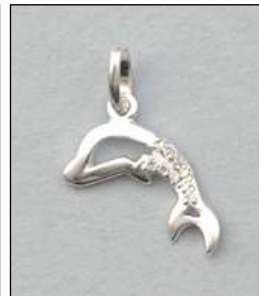
JP125350AT
WT: 1.28 gm



JP125973A18RH
WT: 1 gm



JP125973A18SL
WT: 1.06 gm



JP125992A18SL
WT: 0.02/0.78 gm



JP132138A18SL
WT: 0.1/0.65 gm



JP160158SL
WT: 0.6 gm



JP1249712T
WT: 1.32 gm



JP1250942T
WT: 1.68 gm



JP1251072T
WT: 4.4 gm



JP1251812T
WT: 1.27 gm



PD190464DC
WT: 1.2 gm



PD190505SL
WT: 0.65 gm



PD126384A18SL
WT: 0.03/1.62 gm



PD126383A182T
WT: 0.03/2.82 gm



CH170564SL
WT: 0.85 gm

Dolphins

Weight = Stone Wt. / Net Wt.



CH170670DC
WT: 0.9 gm



CH170565SL
WT: 1.1 gm



CH170566SL
WT: 0.9 gm



CH170567SL
WT: 1.35 gm



CH170667SL
WT: 0.8 gm



CH170668SL
WT: 0.85 gm



PD190644SL
WT: 1.65 gm



PD190645SL
WT: 1 gm



PD190646SL
WT: 1.15 gm



PD190659DC
WT: 1.35 gm



JCH128890SL
WT: 1.4 gm



JCH128891A18SL
WT: 0.07/1.08 gm



JCH170096A18SL
WT: 0.03/1.17 gm



JCH1286552T
WT: 1.68 gm



JCH170099A18EN
WT: 0.1/1.55 gm

Emoji Collection



JCH128468EN
WT: 0.8 gm



JCH128472EN
WT: 0.77 gm



JCH170229SL
WT: 1.01 gm