

MC

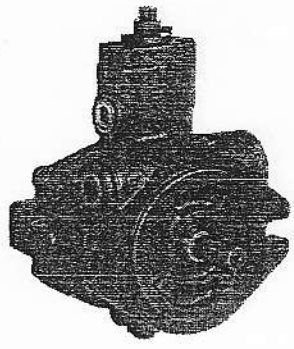


VANP...

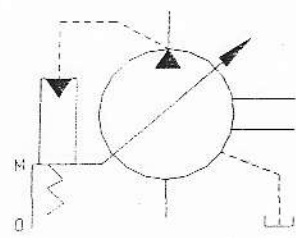
**VARIABLE DISPLACEMENT VANE PUMP**

The "SVPF" series variable displacement single stage vane pump is widely used in machine tools for clamping, slide movement etc.

B



Graphic Symbol



**Ratings:**

Sl. No.	Model Number	Max. Operating Pressure Kg/cm <sup>2</sup>	Delivery at unloading cm <sup>3</sup> /rev.	Flow (lpm)		Pr. Adj. Range Kg/cm <sup>2</sup>	Shaft speed range rpm	
				1800 rpm	1500 rpm		Max.	Min.
1	SVPF-12-70-20H14	70	6.7	12	10	10 ~ 70	1800	800
2	SVPF-20-70-20 H14		11.1	20	16.7			
3	SVPF-30-70-20 H14		16.7	30	25			
4	SVPF-40-70-20 H14		22.2	40	32.5			

**Model Number Designation**

SVPF	-12	-70	-20H14
Series Number	Delivery at unloading l/min. 1800 rpm	Max. Operating Pressure	Design Number
SVPF	12	70: 70 Kg / cm <sup>2</sup>	20H14
	20		
	30		
	40		

**NOTE :-**

Design No.  
**H14** : Modified Spring .  
 For other details refer EI Sheet EI-P4-073 .

**CONTROLLED COPY**  
 07/11/03

**SVP Series Single Pump**

07-11-07

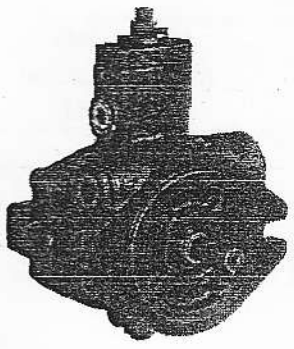


**VANE PUMP**

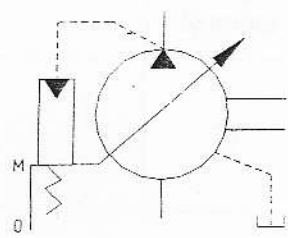
□ **VARIABLE DISPLACEMENT VANE PUMP**

The "SVPF" series variable displacement single stage vane pump is widely used in machine tools for clamping, slide movement etc.

B



Graphic Symbol



Ratings:

Sl.No.	Model Number	Max. Operating Pressure Kg/cm <sup>2</sup>	Delivery at unloading cm <sup>3</sup> /rev.	Flow (lpm)		Pr. Adj. Range Kg/cm <sup>2</sup>	Shaft speed range rpm	
				1800 rpm	1500 rpm		Max.	Min.
1	SVPF-12-20-20	20	6.7	12	10	10 ~ 20	1800	800
2	SVPF-12-35-20	35				10 ~ 35		
3	SVPF-12-55-20	55				10 ~ 55		
4	SVPF-12-70-20	70				10 ~ 70		
5	SVPF-20-20-20	20	11.1	20	16.7	10 ~ 20		
6	SVPF-20-35-20	35				10 ~ 35		
7	SVPF-20-55-20	55				10 ~ 55		
8	SVPF-20-70-20	70				10 ~ 70		
9	SVPF-30-20-20	20	16.7	30	25	10 ~ 20		
10	SVPF-30-35-20	35				10 ~ 35		
11	SVPF-30-55-20	55				10 ~ 55		
12	SVPF-30-70-20	70				10 ~ 70		
13	SVPF-40-20-20	20	22.2	40	32.5	10 ~ 20		
14	SVPF-40-35-20	35				10 ~ 35		
15	SVPF-40-55-20	55				10 ~ 55		
16	SVPF-40-70-20	70				10 ~ 70		

SVP Series Single Pump

07.11.07

CONTROLLED COPY  
07/11/03



**VANE PUMP**

□ Model Number Designation

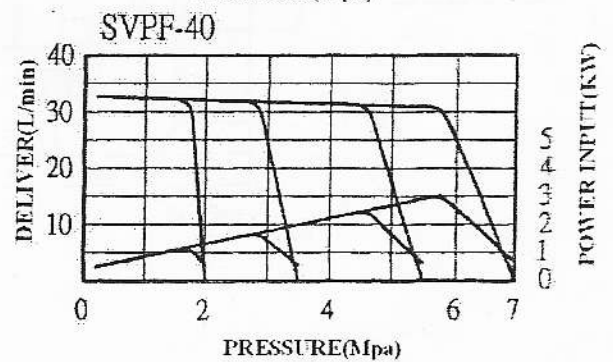
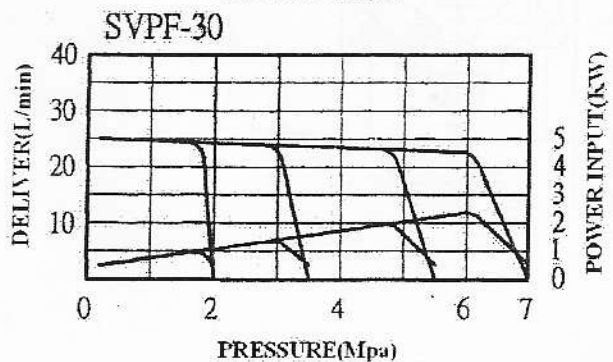
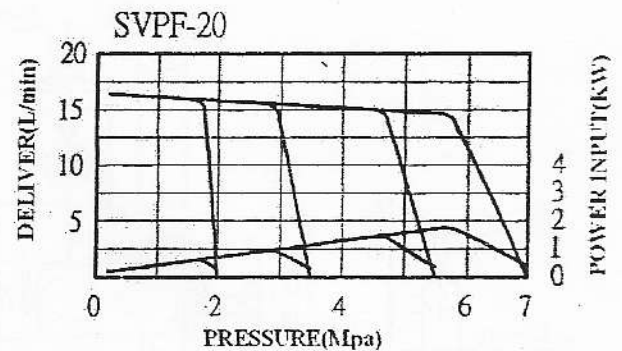
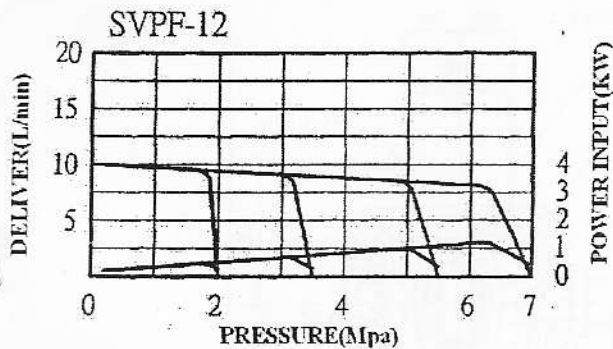
SVPF	-30	-70	-20
Series Number	Delivery at unloading l/min. 1800 rpm	Max. Operating Pressure	Design Number
SVPF	12	20: 20 Kgf / cm <sup>2</sup>	20
	20	35: 35 Kgf / cm <sup>2</sup>	
	30	55: 55 Kgf / cm <sup>2</sup>	
	40	70: 70 Kgf / cm <sup>2</sup>	

B

□ Mounting Bolts

Model	Soc. Hd. Cap Screw	Qty.
SVPF-12 / 20	M10 x 20L	2
SVPF-30 / 40	M10 x 30L	4

□ Performance Characteristics at an Input speed of 1500 rpm.



SVP Series Single Pump

07.11.07

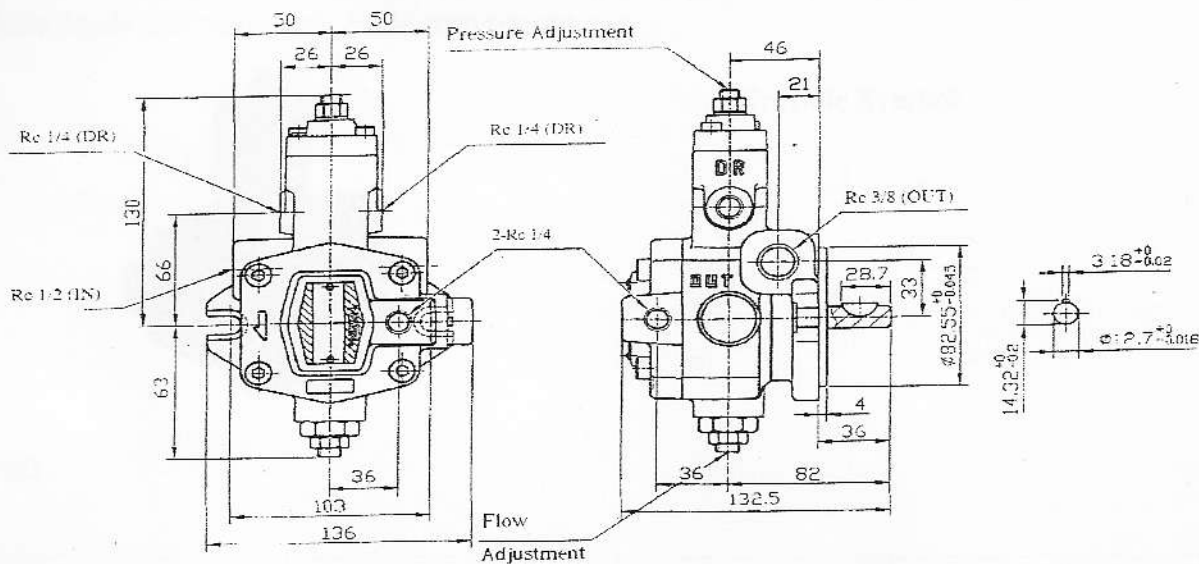
2/3

CONTROLLED COPY  
07/11/07

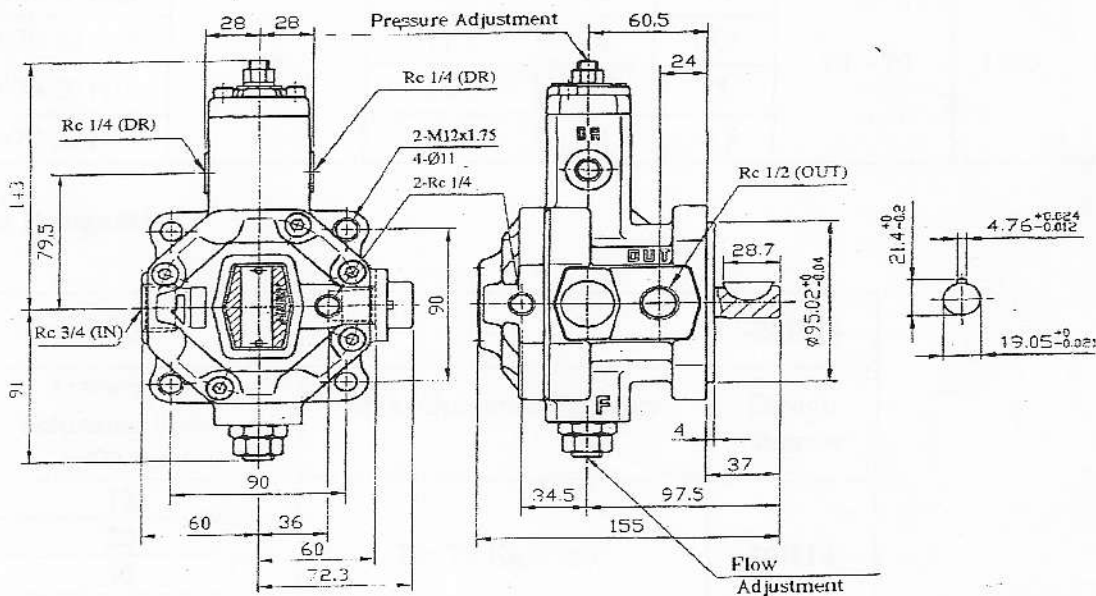


■ SVPF-12/20

B



■ SVPF-30/40



SVP Series Single Pump

07/11/07

CONTROLLED COPY  
07/11/07