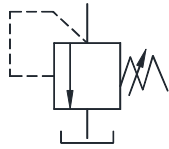


## Direct Operated Pressure Relief Valve

These valves are used in a hydraulic circuit to prevent damage due to excess pressure and to adjust the max. Pressure of small capacity. Available sizes NG6 & NG10.

Graphic Symbol



## Specifications

Model Number	Max. Operating Pressure Kgf/cm <sup>2</sup>	Pres. Adj. Range Kgf/cm <sup>2</sup>	Max. Flow L/min.	Mass Kg.
YCB-06	400	See Model No. Designation	50	1.5
YCB-10			120	3.25

## Model Number Designation

YCB	-06	-A	-G	-2	-10
Series Number	Valve Size	Pres. Adj. Range Kgf/cm <sup>2</sup>	Type of Mounting	Type of Operation	Design <sup>*1</sup> Number
YCB: Cartridge type Relief Valve	06 10	A0 : 0-25 A : 7-50 B : 50-100 C : 100-200 D : 150-315 E : 150-400	None: Cartridge Type G: Sub Plate Type T: Threaded Type	1 : Adj. Screw 2 : Hand Knob	10

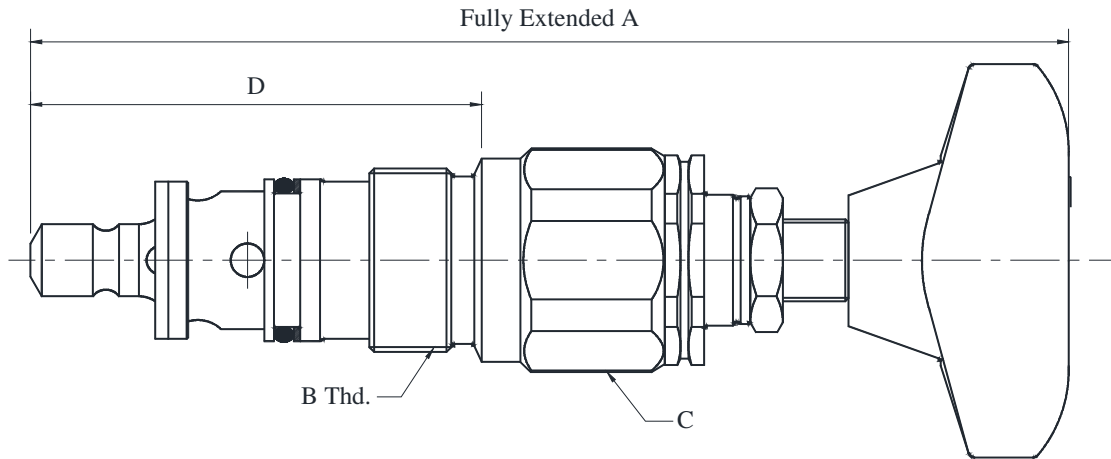
\*1 Design numbers subjected to change, but installation dimensions remains as shown.

## Mounting Bolts

Model Numbers	Socket Head Cap Screw	Qty.	Mounting Bolt Ordering Code
YCB-06-※-G-10	M6 x 35 Lg.	4	BKYCB-06-10
YCB-10-※-G-※-10	M8 x 50 Lg.	4	BKYCB-10-10

■ **Mounting Details**

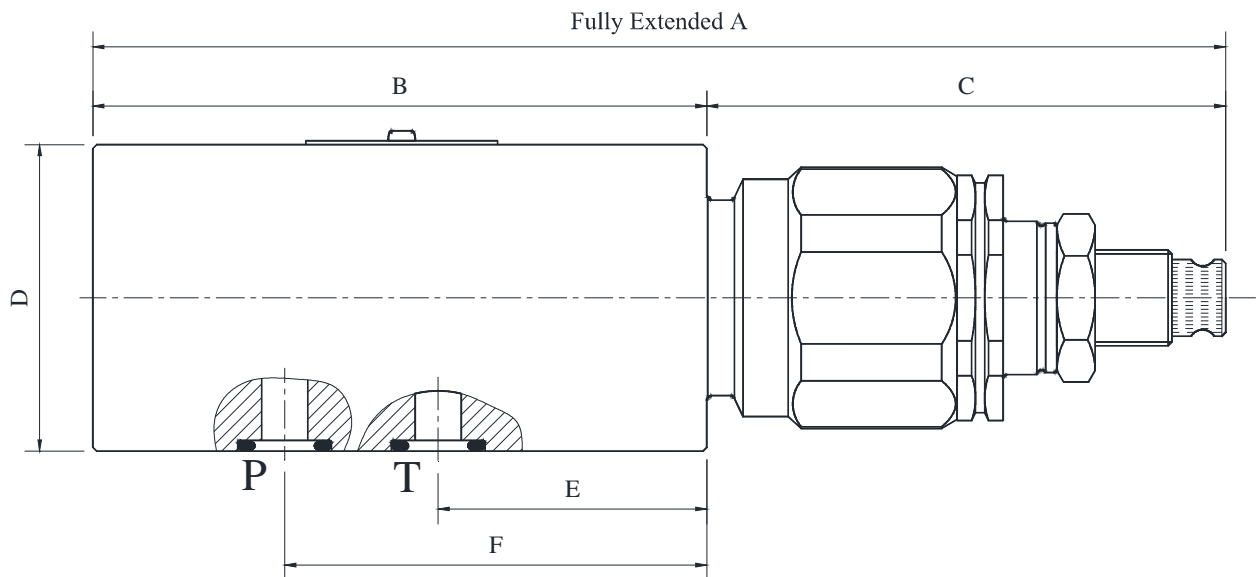
● **Cartridge Type**



Model Numbers	A	B	C	D	Cavity Details
YCB-06-※-1-10	132	M28 x 1.5	A/F 32	69	Refer Page No. 3
YCB-06-※-2-10	158				
YCB-10-※-1-10	142	M35 x 1.5	A/F 36	82.5	
YCB-10-※-2-10	169				

DIMENSIONS IN MILLIMETRES

● **Sub-plate Mounting**

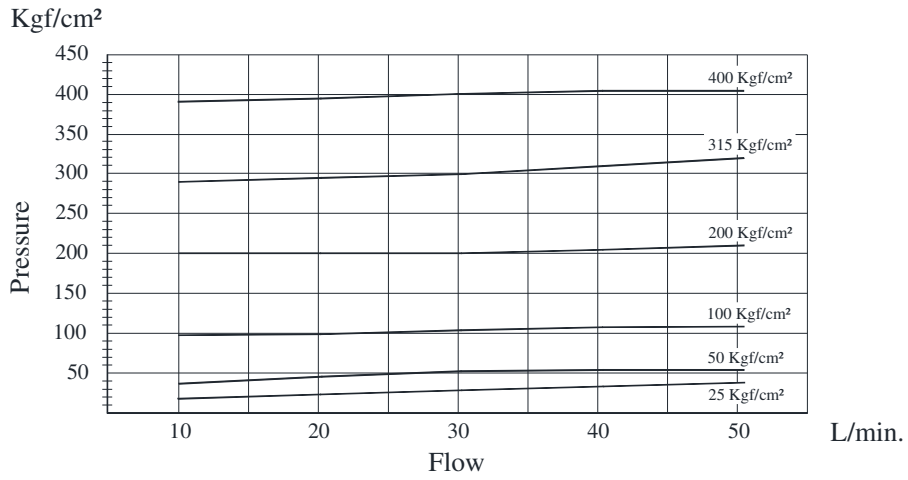


Model Numbers	A	B	C	D	E	F
YCB-06	147.6	80	67.6	40	35	55
YCB-10	164	100	90.3	60	41	65

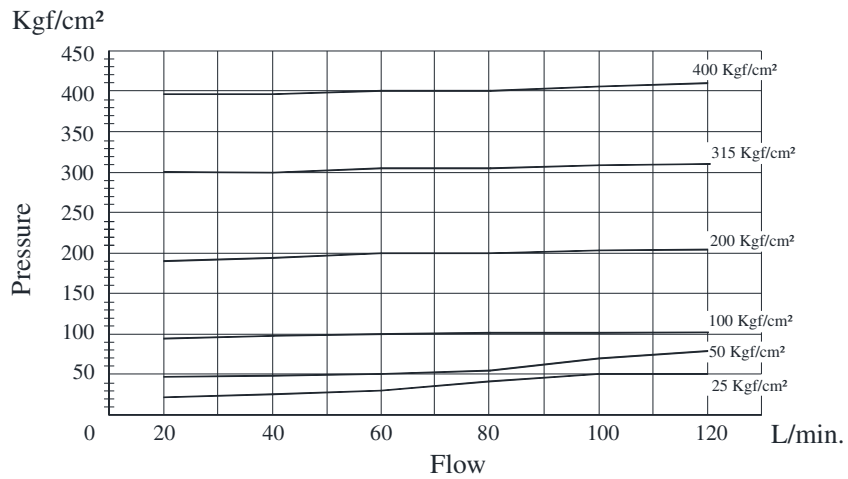


**Pressure Characteristics Curve**

● **YCB-06**

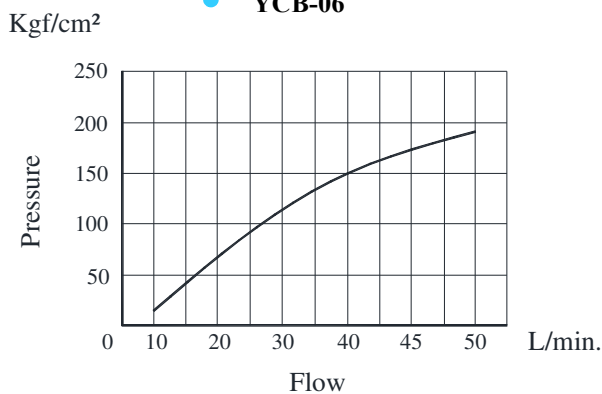


● **YCB-10**

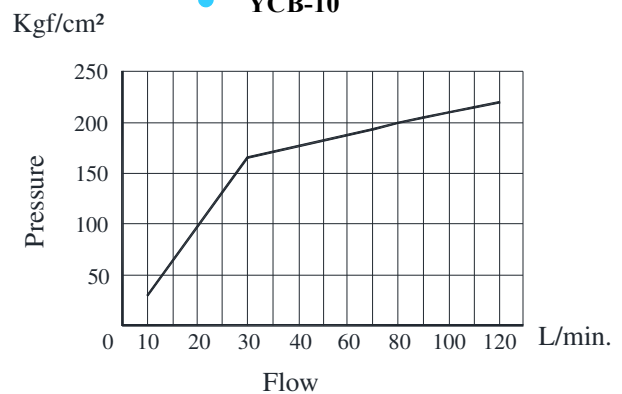


**Minimum Adjusting Pressure**

● **YCB-06**



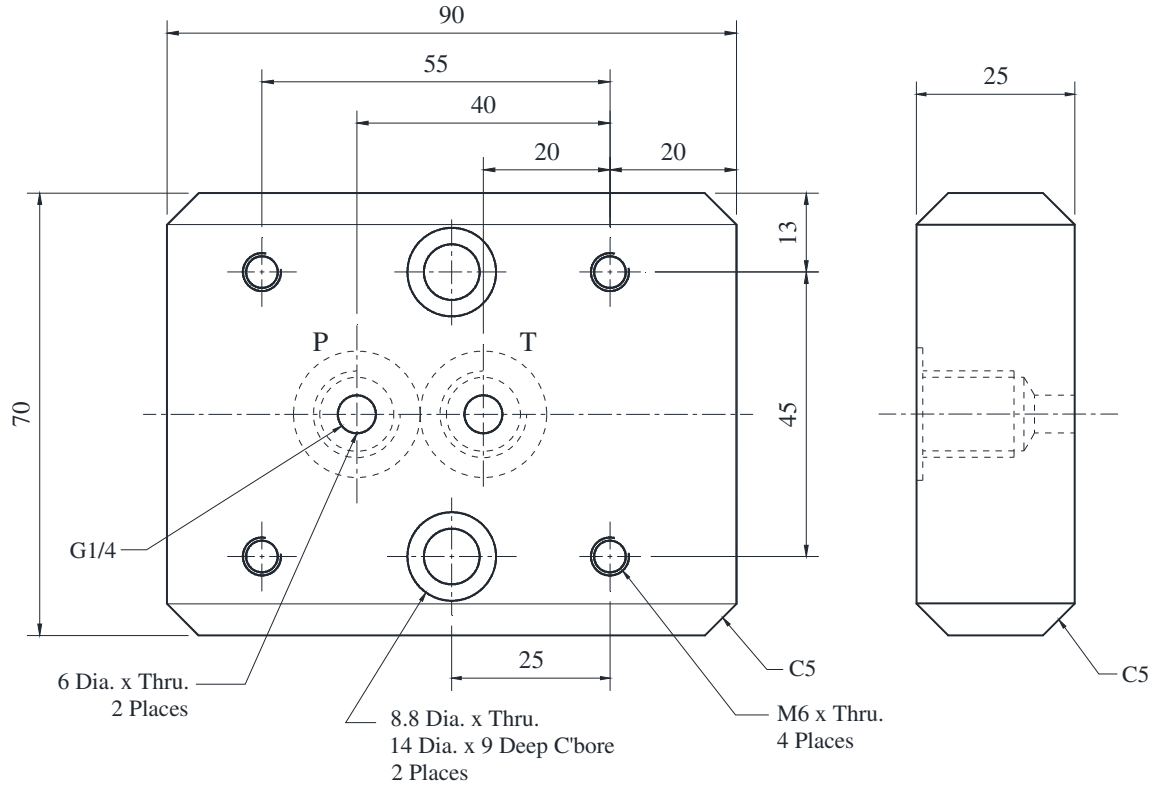
● **YCB-10**



**Sub-plate**

Valve Model Numbers	Sub-plate Model Numbers	Thread Size	Approx. Mass Kg.
YCB-06-※-G-※-10	YCBM-06-10	1/4 BSP.F	2.5
YCB-10-※-G-※-10	YCBM-10-10	1/2 BSP.F	3.4

● **Sub-plate: YCMB-06-10**



● **Sub-plate: YCMB-10-10**

DIMENSIONS IN MILLIMETRES

