

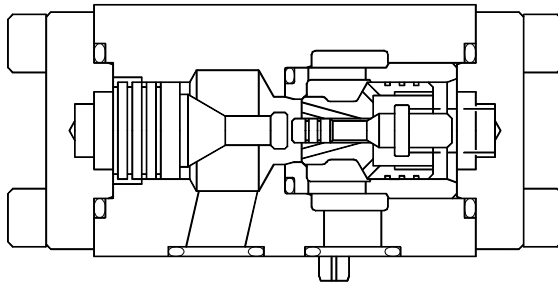
PILOT OPERATED CHECK VALVE MODEL : CIV

Description

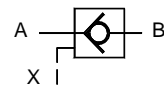
Seat type valves with free flow from port A to port B. They give leak free closure in opposite direction. Opening of the flow direction B to A is effected by pressurisation of pilot piston at port X. Three sizes in both Threaded & Subplate mounting. Subplate mounting interface conforms to ISO 5781.



Section



Hydraulic Symbol



Unit Dimensions

Threaded port body

Dimensions in mm.

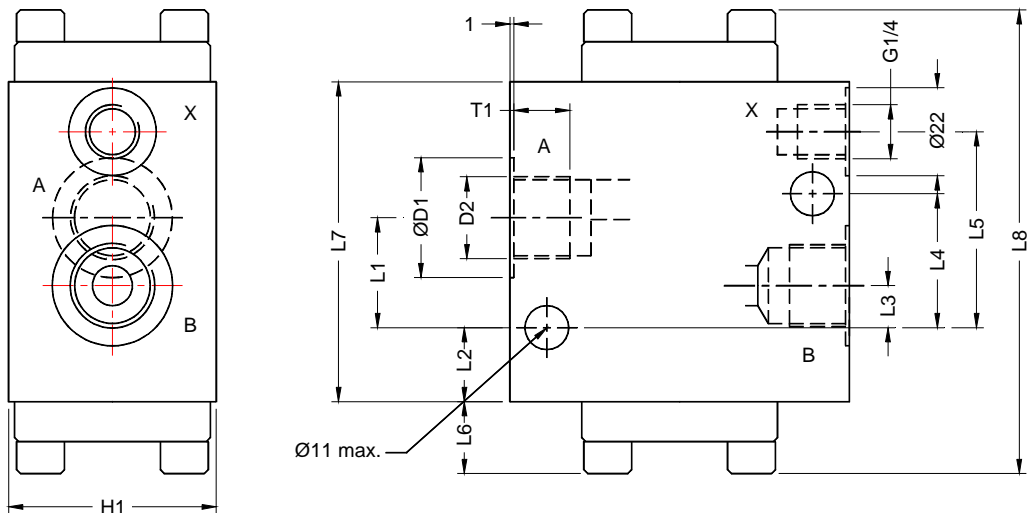
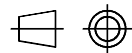


Table No.1

Size	Mass kg	B1	B2	φ D1	D2	H1	L1	L2	L3	L4	L5	L6	L7	L8	T1
10	2.4	66.5	85	30	G1/2	47	27.5	18.5	10.5	33.5	49	18	80	116	14
20	4	79.5	100	44	G1	57	36.7	17.3	13.5	50.5	67.7	20	95	135	18
30	8.4	97	120	60	G1-1/2	80	54.5	15.5	20.5	73.5	89.5	29	115	173	22

PILOT OPERATED CHECK VALVE MODEL : CIV

Subplate mounting

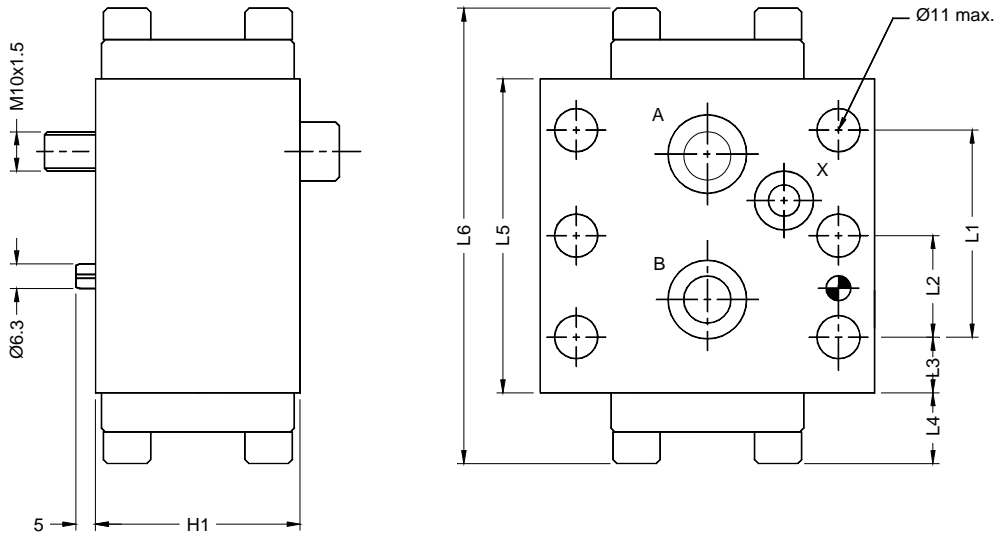
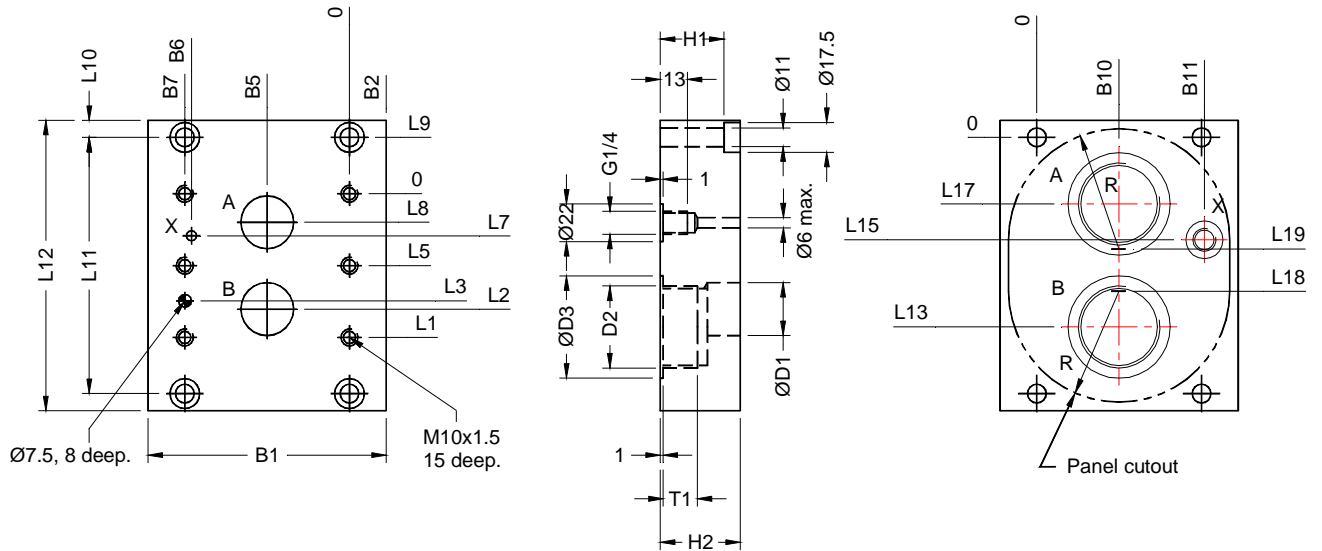


Table No.2

Size	Mass kg	B1	B2	H1	L1	L2	L3	L4	L5	L6
10	2.5	66.7	85	52	42.9	-	18.5	18	80	116
20	4.1	79.4	100	63	60.3	-	17.5	20	95	135
30	8.5	96.8	120	85	84.1	42.1	15.5	29	115	173

PILOT OPERATED CHECK VALVE MODEL : CIV

Subplate



Size	Model	Mass kg	B1	B2	B5	B6	B7	B10	B11	φD1	D2	φD3	H2
10	CIV10G03	2.4	86	9.6	33.3	58.7	66.7	33.3	58.7	13	G1/2	30	29
20	CIV20G05	5.2	112	16.3	39.7	73	79.4	39.7	75	22	G1	44	45
30	CIV30G07	8.5	140	21.6	48.4	92.9	96.8	48.4	98.5	31	G1-1/2	60	47

Size	Model	H1	L1	L2	L3	L5	L7	L8	L9	L10	L11	L12	L13
10	CIV10G03	15	42.9	35.7	31.8	-	21.4	7.1	31.9	10	107	127	75
20	CIV20G05	25	60.3	49.2	44.5	-	20.8	11.1	22	16	104	136	82
30	CIV30G07	35	84.1	67.5	62.7	42.1	24.6	16.7	33	10	150	170	115

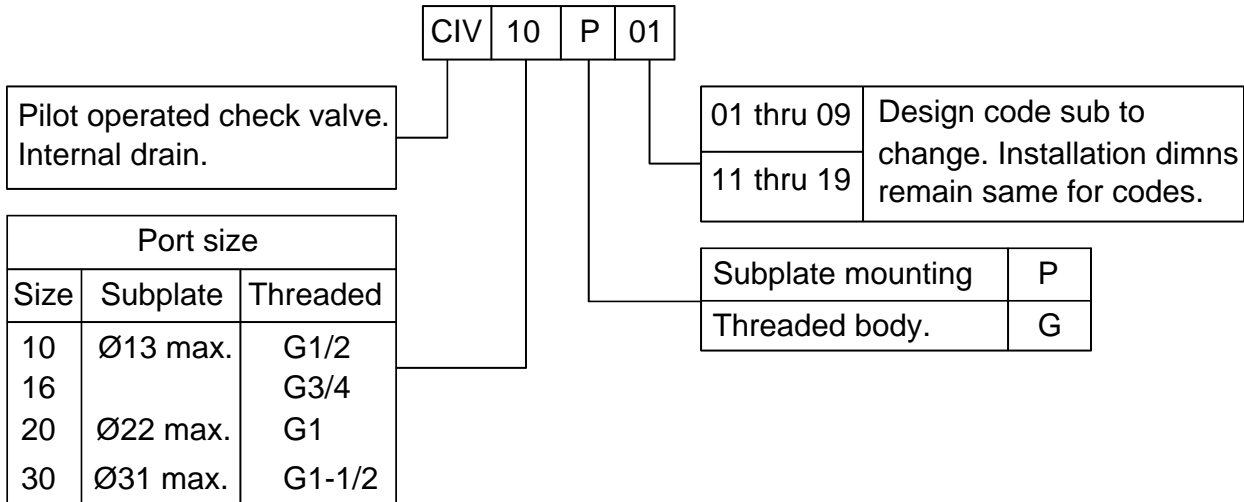
Size	Model	L15	L17	L18	L19	R	T1	Valve fixing screws	Tightening torque.Nm
10	CIV10G03	53.3	31	68	39	40	14	M10x65L	70
20	CIV20G05	42.6	22	57	47	52	18	M10x80L	
30	CIV30G07	60	35	90	60	65	22	M10x90L	

PILOT OPERATED CHECK VALVE MODEL : CIV

Technical Specifications.

Construction	Seat type valve,with decompression poppet.	
Mounting style	Threaded port or subplate mounting.	
Subplate mounting interface	As per ISO 5781	
Mounting position	Optional.	
Flow direction	Free flow from A to B. Piloted flow from B to A.	
Cracking pressure	1 bar.	
Operating pressure	315 bar.	
Area ratios	Design series 01 thru 09	Design series 11 thru 19
	Pilot piston = 16	Pilot piston = 4
	Decom poppet = 1	Decom poppet = 1
	Pilot piston = 2	Pilot piston = 1
	Main poppet = 1	Main poppet = 2
Hydraulic medium	Mineral oil	
Viscosity range	10 cSt to 380 cSt.	
Fluid temperature range	-20 °c to + 80 °c	
Fluid cleanliness requirement	As per ISO 16 / 13.	
Max. flow handling capacity	NG10 .. 80 l / min. NG20 .. 160 l / min. NG30 .. 350 l /min.	

Ordering Code



All rights reserved
subject to revision.

PRISM HYDRAULICS PVT. LTD.
B-23, Angol Indl. Estate,
Udyambag,
Belgaum - 590 008. INDIA.

Phone :- +91-(0831)-2443448
Fax :- +91-(0831)-4202340
E-mail :- prismhydraulics@gmail.com