

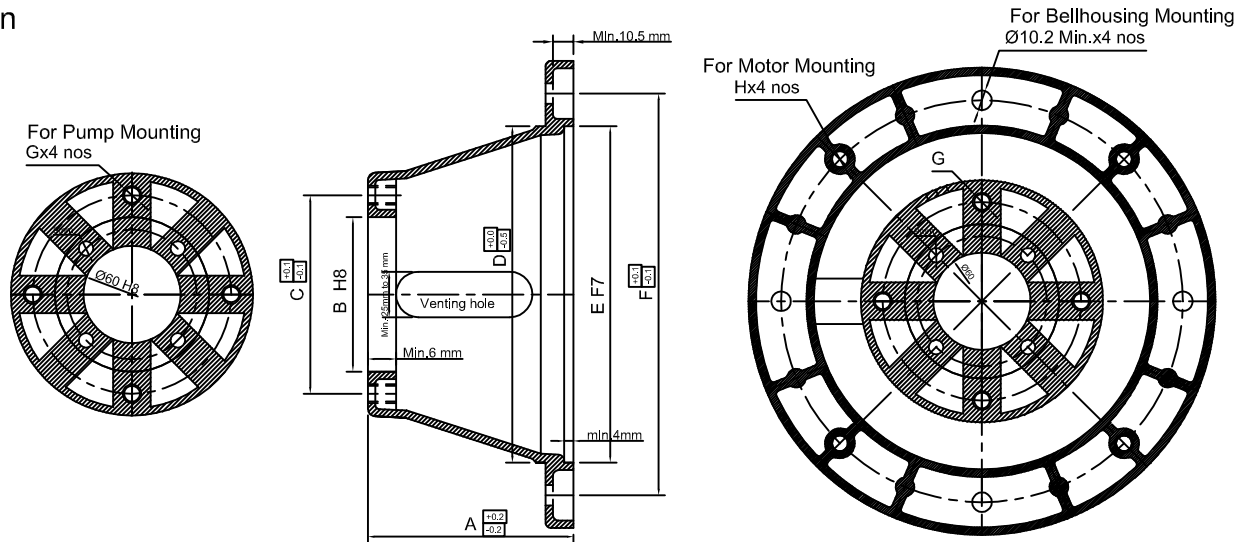


# BELL HOUSING (Aluminium)

## Product Characteristics

- By using bell housings motor and pump shaft are aligned to each other optimally
- Material aluminium low weight with sufficient strength
- Horizontal assembly possible with foot cum flange motor
- Bell housing material high graded aluminium pressure die cast
- Jacktech GJM series aluminium bell housing are precisely machined to reduce misalignment of coupled shafts
- Aluminium bell housing also reduces the noise generation considerably
- Aluminium bell housing size available as per factory stock

## Section



## Dimensional Details & Ordering information

PART NO.	FRAME SIZE	MOTOR H.P.	A	B H8	C	D	E F7	F	G	H
11082675	71	0,5	75	82.6	106.2	114	110	130	M10	M8
13082680	80	0.75,1	80	82.6	106.2	140	130	165	M10	M10
130826100	80,90 S/L	0.75,1,1.5,2	100	82.6	106.2	140	130	165	M10	M10
130826130	80,90 S/L	0.75,1,1.5,2	130	82.6	106.2	140	130	165	M10	M10
13060130	80,90 S/L	0.75,1,1.5,2	130	60	80	140	130	165	Ø9	M10
180826110	100L/112M	3,5	110	82.6	106.2	180	180	215	M10	M12
180826124	100L/112M	3,5	124	82.6	106.2	180	180	215	M10	M12
18060124	100L/112M	3,5	124	60	80	180	180	215	Ø9	M12
NEW 1801016110 / 124	100L/112M	3,5	110/124	101.6	145.9	180	180	215	M12	M12
230826145	132S/132M	7.5,10	145	82.6	106.2	230	230	265	M10	M12
2301016145	132S/132M	7.5,10	145	101.6	145.9	230	230	265	M12	M12
230100145	132S/132M	7.5,10	145	100	140	230	230	265	M12	M12
23060145	132S/132M	7.5,10	145	60	80	230	230	265	Ø9	M12
250127188 / 204	160 M/L,180 M/L	12.5,15,20,25,30	189 / 205	127	180.8	255	250	300	M16	M16
250125188 / 204	160 M/L,180 M/L	12.5,15,20,25,30	189 / 205	125	180.8	255	250	300	M16	M16
2501016188 / 204	160 M/L,180 M/L	12.5,15,20,25,30	189 / 205	101.6	145.9	255	250	300	M12	M16
250100188 / 204	160 M/L,180 M/L	12.5,15,20,25,30	189 / 205	100	140	255	250	300	M12	M16
250826188 / 204	160 M/L,180 M/L	12.5,15,20,25,30	189 / 205	82.6	106.2	255	250	300	M10	M16
25060188 / 204	160 M/L,180 M/L	12.5,15,20,25,30	189 / 205	60	80	255	250	300	Ø9	M16
101682687 / 92	EXTENSION BKT.	EB-1RE-1P / 1T	87 / 92	82.6	106.2	**	101.55	156	M10	Ø11
NEW 1016101690 / 100	EXTENSION BKT.	EB-1RE-2P / PVR-50	90 / 100	101.6	106.2	**	101.55	156	M12	Ø11

Note: \*This bell housing dimension as per jacktech gear coupling & jacktech standard

\* Bell housing kits with Bore key ways coupling & all mounting bolt also available

## JACKTECH HYDRAULICS

Plot no.-433 G.I.D.C. Odhav  
Opp. Bhiksuk gruph  
Ahmedabad-382415 INDIA

Phone : +91-(0)79 22892302,03,04  
Fax : +91-(0)79 22892305  
E-mail : info@jacktechhyd.com  
Website : www.jacktechhyd.com



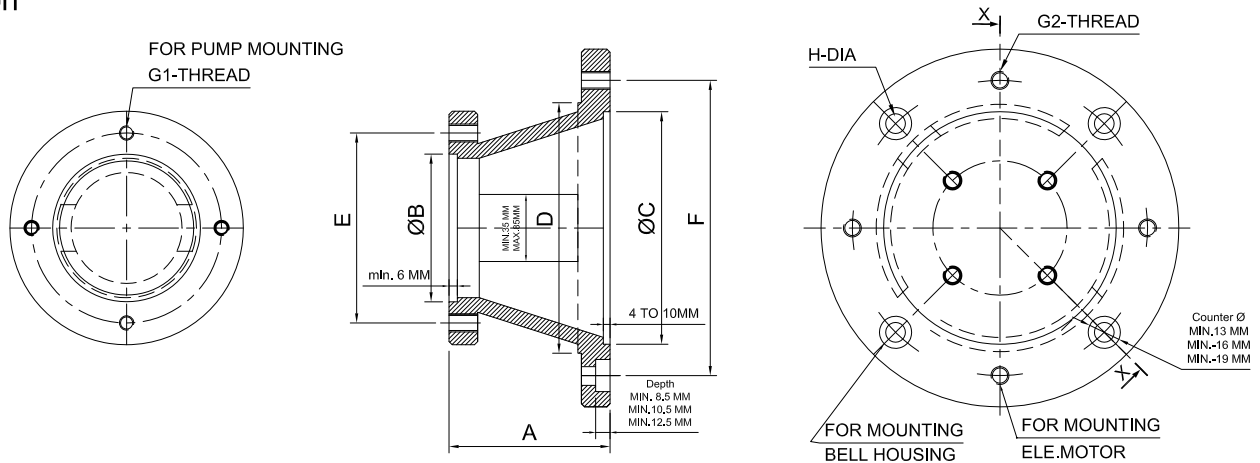
# BELL HOUSING (Casting)

## Product Characteristics

- By using bell housings motor and pump shaft are aligned to each other optimally
- Horizontal assembly possible with foot cum flange motor
- Bell housing material high graded cast iron
- Jacktech bell housing are precisely machined to reduce misalignment of couple shafts.
- Casting bell housing also reduces the noise generation considerably
- Casting bell housing size available as per factory stock



## Section



## Dimensional Details

FRAME SIZE	MOTOR H.P.	A	B	C	D	E	F	G1	G2	H
71	0.5	75	82.6	110	115	106.2	130	M10	M8	8.5
80	0.75, 1	80	82.6	130	140	106.2	165	M10	M10	10.5
90S, 90L	1.5, 2	100	82.6	130	140	106.2	165	M10	M10	10.5
90S, 90L	1.5, 2	122	101.6	130	140	145.9	165	M12	M10	10.5
90S, 90L	1.5, 2	130	127	130	140	180.8	165	M16	M10	10.5
100L, 112M	3, 5	110 122	82.6	180	180	106.2	215	M10	M12	10.5
100L, 112M	3, 5	145	100 101.6	180	180	140 145.9	215	M12	M12	10.5
100L, 112M	3, 5	145	125 127	180	180	180.8	215	M16	M12	10.5
132S, 132M	7.5, 10	145 170	82.6	230	230	106.2	265	M10	M12	10.5
132S, 132M	7.5, 10	170	100 101.6	230	230	140 145.9	265	M12	M12	10.5
132S, 132M	7.5, 10	170	125 127	230	230	180.8	265	M16	M12	10.5
160M/L, 180M/L	12.5, 15, 20, 25, 30	200	82.6	250	250	106.2	300	M10	M16	10.5
160M/L, 180M/L	12.5, 15, 20, 25, 30	200	100 101.6	250	250	140 145.9	300	M12	M16	10.5
160M/L, 180M/L	12.5, 15, 20, 25, 30	200	125 127	250	250	180.8	300	M16	M16	10.5
200L	40	210	100 101.6	300	300	140 145.9	350	M12	M16	10.5
200L	40	210	125 127	300	300	180.8	350	M16	M16	10.5
225S, 225M	50, 60	250	100 101.6	350	300	140 145.9	400	M12	M16- 8 nos.	13- 8 nos.
225S, 225M	50, 60	250	125 127	350	300	180.8	400	M16	M16- 8 nos.	13- 8 nos.

Note: \* This bell housing dimension as per jacktech gear coupling & jacktech standard  
 \* Bell housing kits with Bore key ways coupling & all mounting bolt also available  
 \* As per your required pump mounting detail bell housing also available.

## JACKTECH HYDRAULICS

Plot no.-433 G.I.D.C. Odhav  
Opp. Bhiksuk guruh  
Ahmedabad-382415 INDIA

Phone : +91-(0)79 22892302,03,04  
 Fax : +91-(0)79 22892305  
 E-mail : info@jacktechhyd.com  
 Website : www.jacktechhydraulics.com



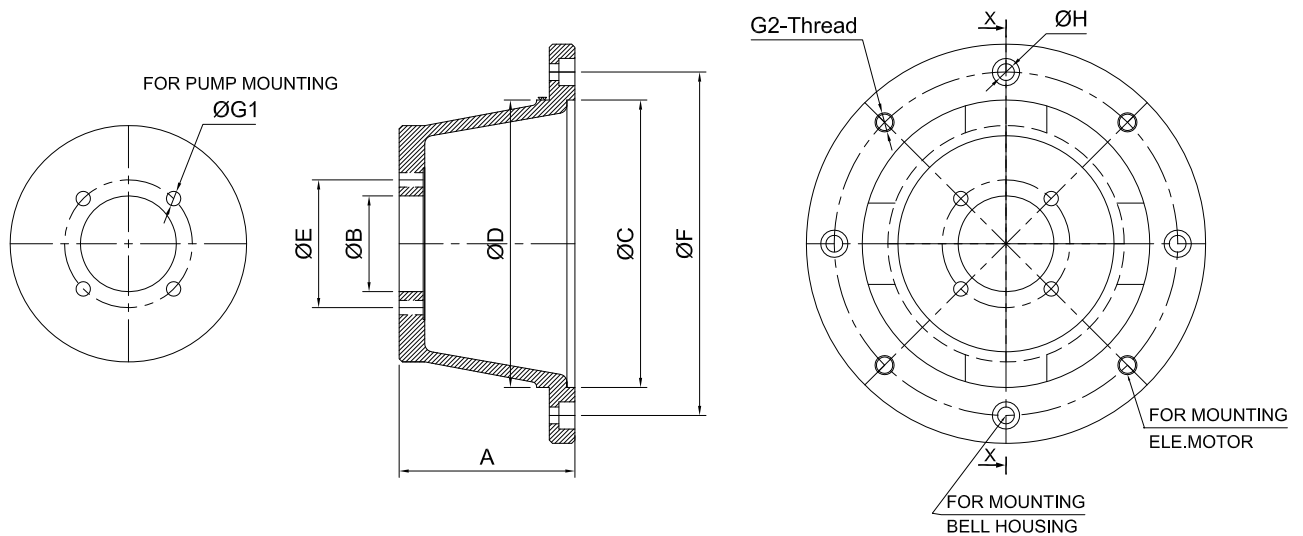
# BELL HOUSING (CASTING) (PISTON PUMP)

## Product Characteristics

- By using bell housings motor and pump shaft are aligned to each other optimally
- Horizontal assembly possible with foot cum flange motor
- Bell housing material high graded cast iron
- Jacktech bell housing are precisely machined to reduce misalignment of couple shafts.
- Casting bell housing also reduces the noise generation considerably
- Casting bell housing size available as per factory stock



## Section



## Dimensional Details

FRAME SIZE	MOTOR H.P.	A	B	C	D	E	F	G1	G2	H
80L, 90S, 90L	0.75, 1, 1.5, 2	121	60	130	140	80	165	9	M10	10.5
80L, 90S, 90L	0.75, 1, 1.5, 2	130	60	130	140	80	165	9	M10	10.5
100L, 112M	3, 5	122	60	180	180	80	215	9	M12	10.5
100L, 112M	3, 5	145	60	180	180	80	215	9	M12	10.5
132S, 132M	7.5, 10	145	60/70	230	230	80/92	265	9/11	M12	10.5
132S, 132M	7.5, 10	170	60/70	230	230	80/92	265	9/11	M12	10.5
160M/L, 180M/L	12.5,15,20,25,30	200	60/70	250	250	80/92	300	9/11	M16	10.5
200L	40	210	60/70	300	300	80/92	350	9/11	M16	10.5
225S, 225M	50, 60	250	60/70	350	300	80/92	400	9/11	M16- 8 nos.	13- 8 nos.

Note: \* This bell housing dimension as per jacktech gear coupling & jacktech standard  
 \* Bell housing kits with Bore key ways coupling & all mounting bolt also available  
 \* As per your required pump mounting detail bell housing also available.

## JACKTECH HYDRAULICS

Plot no.-433 G.I.D.C. Odhav  
Opp. Bhiksuk guruh  
Ahmedabad-382415 INDIA

Phone : +91-(0)79 22892302,03,04

Fax : +91-(0)79 22892305

E-mail : info@jacktechhyd.com

Website : www.jacktechhydraulics.com



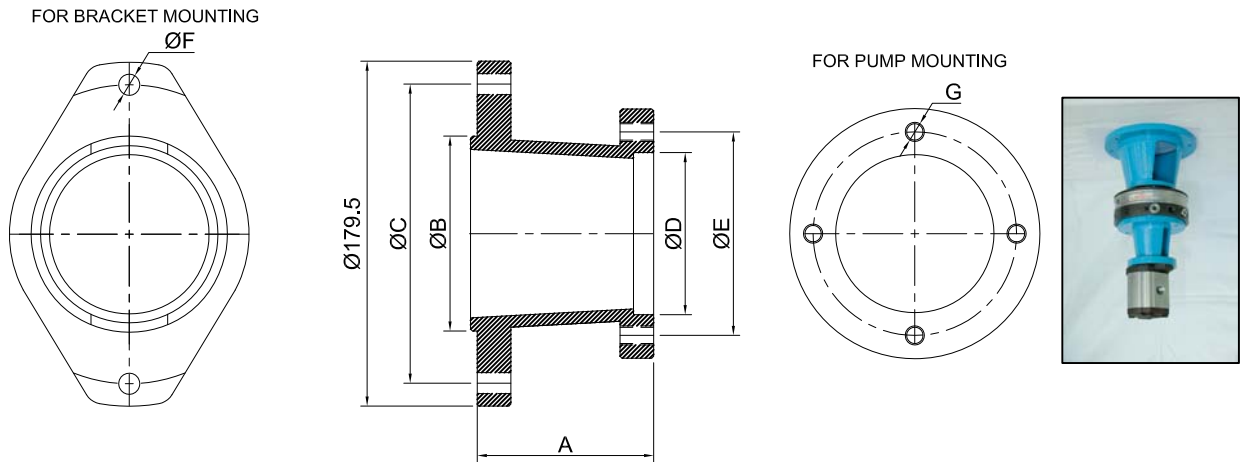
# BELL HOUSING (CASTING) (EXTENSION BRACKET)

## Product Characteristics

- By using bell housings (Extension Bracket) pump and pump shaft are aligned to each other optimally.
- Horizontal assembly possible.
- Bell housing (Extension Bracket) material high graded cast iron.
- Jacktech bell housing (Extension Bracket) are precisely machined to reduce misalignment of couple shafts.
- Casting bell housing (Extension Bracket) also reduces the noise generation considerably
- Casting bell housing (Extension Bracket) size available as per factory stock.



## Section



## Dimensional Details & Ordering information

ORDER CODE	A	ØB	ØC	ØD	ØE	ØF	G
BHCK*-101.6-82.6-87	87	101.6	156	82.6	106.2	11	M10
BHCK*-101.6-82.6-92	92	101.6	156	82.6	106.2	11	M10
BHCK*-101.6-82.6-120	120	101.6	156	82.6	106.2	11	M10
BHCK*-101.6-101.6-90	90	101.6	156	101.6	145.9	11	M12
BHCK*-101.6-101.6-100	100	101.6	156	101.6	145.9	11	M12
BHCK*-113.8-101.6-130.5	130.5	113.8	156	101.6	145.9	18	M12
BHCK*-101.6-101.6-120	120	101.6	156	101.6	145.9	11	M12
BHCK*-101.6-127-130	130	101.6	156	127	180.8	11	M16
BHCK*-113.8-127-130	130	113.8	156	127	180.8	18	M16
BHCK*-113.8-127-130	130	113.8	140	127	180.8	11- 4 Nos	M16

- Note: \* This bell housing (Extension Bracket) dimension as per jacktech gear coupling & jacktech standard.
- \* Bell housing (Extension Bracket) kits with Bore key ways coupling & all mounting bolt also available.
  - \* As per your required pump mounting detail bell housing (Extension Bracket) also available.
  - \* Bell housing (Extension Bracket) order code with gear coupling & bolt code (BHCK)  
W/O gear coupling & bolt code (BHC)

## JACKTECH HYDRAULICS

Plot no.-433 G.I.D.C. Odhav  
Opp. Bhiksuk guruh  
Ahmedabad-382415 INDIA

Phone : +91-(0)79 22892302,03,04

Fax : +91-(0)79 22892305

E-mail : info@jacktechhyd.com

Website : www.jacktechhydraulics.com



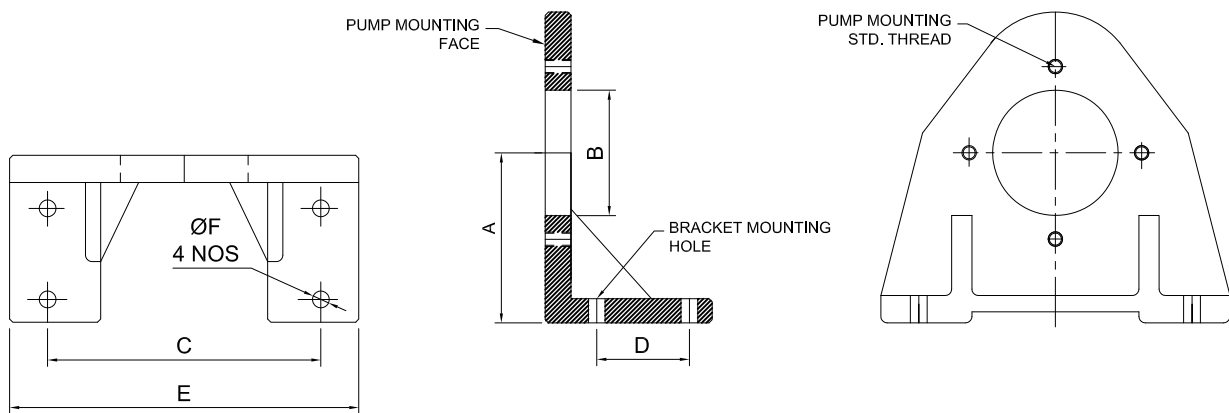
# BELL HOUSING (CASTING) ( 'L' TYPE BRACKET )

## Product Characteristics

- By using bell housings (L Bracket) motor and pump shaft are aligned to each other optimally.
- Horizontal assembly possible with foot cum flange motor.
- Bell housing (L Bracket) material high graded cast iron.
- Jacktech bell housing (L Bracket) are precisely machined to reduce misalignment of couple shafts.
- Casting bell housing (L Bracket) also reduces the noise generation considerably.
- Casting bell housing (L Bracket) size available as per factory stock.



## Section



## Dimensional Details

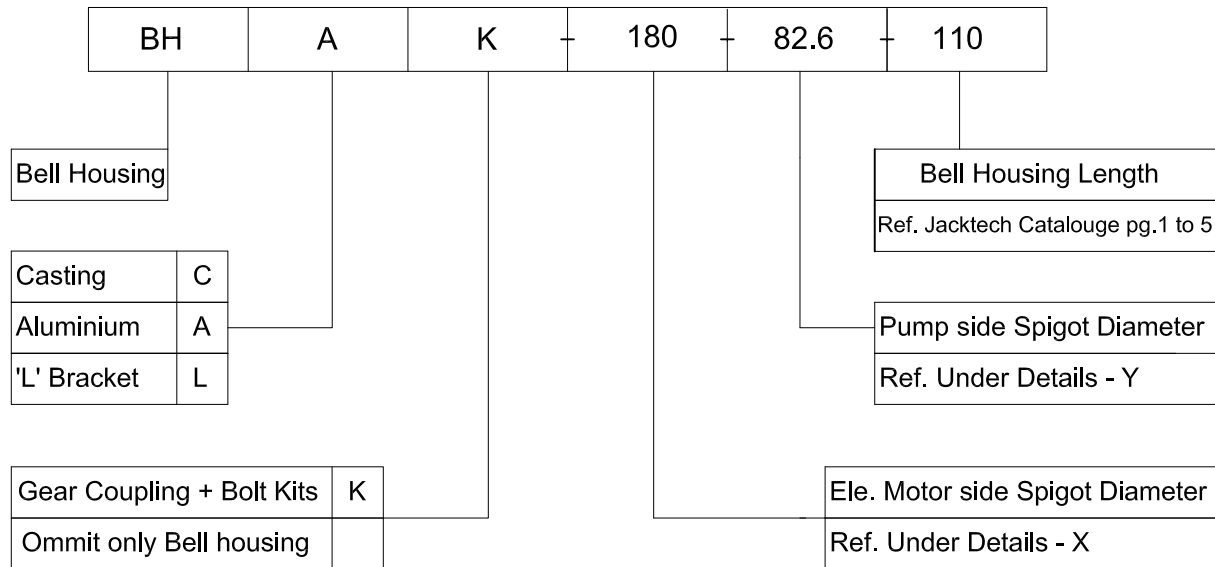
FRAME SIZE	MOTOR H.P.	A	B				C	D	E	F
71	0.5	71	60	82.6			150	50	182	11
80	0.75, 1	80	60	82.6			150	50	182	11
90S, 90L	1.5, 2	90	60	82.6			150	50	182	11
100L	3	100	60	82.6	101.6	127	190	60	228	11
112M	5	112	60	82.6	101.6	127	190	60	228	11
132S, 132M	7.5, 10	132	60	82.6	101.6	127	230	60	272	13
160M, 160L	12.5, 15, 20	160	60	82.6	101.6	127	270	80	322	13
180M, 180L	25, 30	180	60	82.6	101.6	127	270	80	322	13

Note: \* Bell housing (L Bracket) kits with Bore key ways coupling & all mounting bolt also available  
 \* As per your required pump mounting detail bell housing (L Bracket) also available.



# BELL HOUSING ORDERING CODE

## Product Ordering code



Electrical Motor Spigot Diameter - X	
H.P.	Spigot Diameter
0.5 HP	110
0.75 & 1 HP	130
1.5 & 2 HP	130
3 & 5 HP	180
7.5 & 10 HP	230
12.5, 15, 20, 25 & 30 HP	250
40 HP	300
50 & 60 HP	350
75, 80, 100 & 120 HP	450
PISTON PUMP	101.6
PISTON PUMP	113.8

Pump Spigot Diameter - Y	
Pump	Spigot Diameter
1R & 2R	60
11R & 12R	70
RV20SF & 1PF2G2...	80
0P, 1P, SVPF 12/20 & 1T HA-16,22	82.6
SVPF- 30 / 40	95
Variable Piston PUMP HA 10VSO-28,45	100
2P, SVP2 & PVR-50 HA-37,45,56,64 & VT6BB/CC	101.6
Variable Piston PUMP HA 10VSO-71,100	125
3P, SVP3 & PVR- 150 HA-70,80	127
Variable Piston PUMP HA-90,100,120,145,160	152.4
GR- 25 to 40	155
Variable Piston PUMP HA 10VSO-140	180
GR- 45 to 70	220

Note: \* As per your required pump mounting detail bell housing also available.

\*

### JACKTECH HYDRAULICS

Plot no.-433 G.I.D.C. Odhav  
Opp. Bhiksuk gruh  
Ahmedabad-382415 INDIA

Phone : +91-(0)79 22892302,03,04

Fax : +91-(0)79 22892305

E-mail : info@jacktechhyd.com

Website : www.jacktechhydraulics.com



# NYLONE SLEEVE SERIES FLEXIBE COUPLING

Page - 1/2  
Release 04/2015

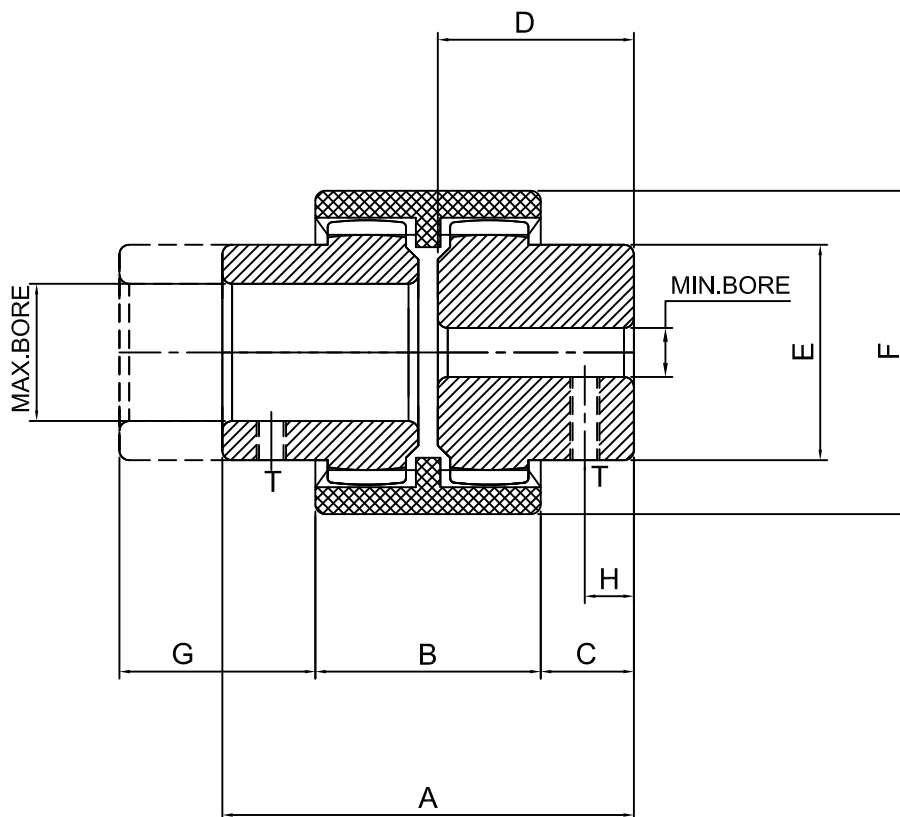
## Features & Description

The series is a standard coupling with two hubs, a nylon sleeve, and retaining rings depending on the model selected. The coupling has a precision molded nylon sleeve and powder metal hub with no bolts, pins, flanges, or protrusions that could have an effect on balance or operational safety. Since no lubrication is used, the couplings can readily be adapted to many applications including vertical and blind installations.

- Compact in size
- Maintenance Free - No Lubrication required
- Can accommodate axial, angular, and parallel misalignment
- Easy to assemble
- Electrically insulating
- Can be used in temperature ranges from  $-25^{\circ}$  to  $80^{\circ}$  C
- Nylon sleeves has high resistance to condensation and water, hydrocarbon based petroleum, and alcohols
- Not ideal for use with acids, benzyl based products, or glycols



## Unit Dimensions



### JACKTECH HYDRAULICS

Plot no.-433 G.I.D.C. Odhav  
Opp. Bhiksuk gruh  
Ahmedabad-382415 INDIA

Phone : +91-(0)79 22892302,03,04

Fax : +91-(0)79 22892305

E-mail : [info@jacktechhyd.com](mailto:info@jacktechhyd.com)

Website : [www.jacktechhyd.com](http://www.jacktechhyd.com)





# NYLONE SLEEVE SERIES FLEXIBE COUPLING

Page - 2/2  
Release 04/2015

## Unit Dimensions

**Table-1**

Coupling Size	Total Length	Sleeve Width	Hub Width	Gear length	Boss O.D.	Sleeve O.D.	Clearance	Metric set screw	
	A (mm.)	B (mm.)	C (mm.)	D (mm.)	E (mm.)	F (mm.)	G (mm.)	H (mm.)	T Size
JT 19	54	37	07	25	30	48	18	6	M5
JT 24	56	41	7.5	26	36	52	18.5	6	M5
JT 28	84	46	19	40	44	66	21	10	M6
JT 38	84	48	18	40	58	83	22	10	M8
JT 48	104	50	27	50	68	100	23	10	M8
JT 65	144	72	36	70	96	140	34	20	M10

Note: \* Bore with key way gear coupling also available.  
\* Gear length varriable also available.

## Performance Data

**Table-1**

Coupling Size	Torque Capacity		Maximum	Misalignment			Weight <sup>1</sup>	Bore Size <sup>2</sup>	
	Nominal	Maximum	Speed	Angular	Axial	Parallel		Nominal	Maximum
	Nm	Nm	RPM	Degrees	mm	mm	kg	mm	mm
JT 19	16	32	8000	1° Per Hub	+/-1	0.3	0.3	09	19
JT 24	20	40	8000			0.4	0.5	10	24
JT 28	45	90	8000			0.4	1.1	10	28
JT 38	80	160	6000			0.4	1.9	14	38
JT 48	140	280	5000			0.4	3.2	14	48
JT 65	390	780	3800			0.6	8.7	20	65

Note: \* 1 indicate: weight is calculated using minimum bore and standard length.  
\* 2 indicate: minimum and maximum bore size are given for straight bores.



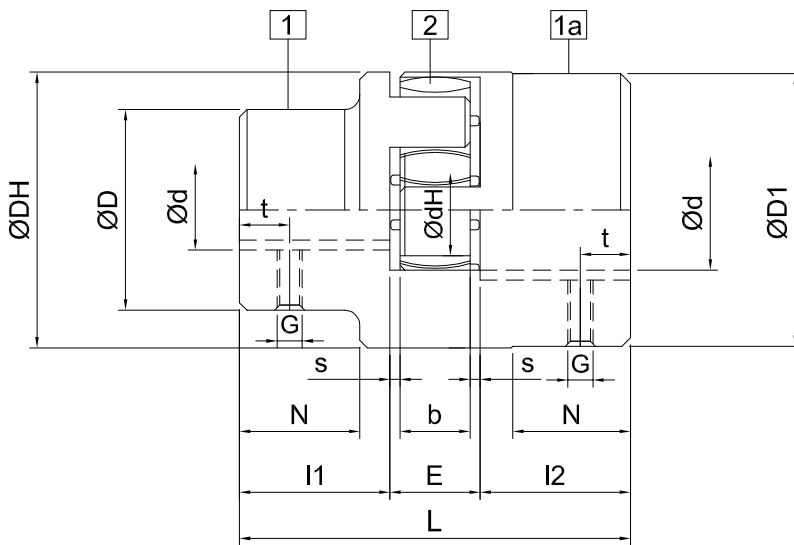


Features & Description

- Hub from steel , cast iron ,sg iron ,specifically suitable for drive elements subject to high load, e.g. steel mills, elevator drives, hydraulics, etc.
- Torsionally flexible , maintenance-free, vibration-damping
- Axial plug-in, fail-safe
- Allover machining - good dynamic properties
- Compact design / small flywheel effect
- Finish bore according to ISO fit H7, feather keyway according to DIN 6885 sheet 1 - JS9



Component



- 1 - Standard Hub
- 2 - Spider
- 1a - Large Hub

Unit Dimensions

Material :- Steel (st) / EN-GJL-250 (GG 25) / EN-GJS-400-15 (GGG 40)

Size	Component	Spider		Finish bore d (min-max)	Dimensions [mm]										Thread for setscrews			
		Rated torque (NM)			General										N	G	t	T <sub>A</sub> [Nm]
		92 Sh A	98 Sh A		L	I1;I2	E	b	s	D <sub>H</sub>	d <sub>H</sub>	D;D1						
24	1	35	60	9 - 24	78	30	18	14	2	56 *	27	40	24	M5	10	2		
	22 - 28			56 *														
28	1	95	160	10 - 28	90	35	20	15	2.5	66 *	30	48	28	M8	15	10		
	28 - 38			66 *														
38	1	190	325	12 - 40	114	45	24	18	3	80	38	66 *	37	M8	15	10		
	38 - 48			78														
42	1	265	450	14 - 45	126	50	26	20	3	95	46	75 *	40	M8	20	10		
	42 - 55			94														

Order form :	Coupling size	Material	Spider hardness	Component	Finish bore	Component	Finish bore
Example	JACKTECH 42	GJS	92 Sh A	1	Ø22.22	1a	Ø42