



# CHECK VALVE ( C )

## Description

Seat type valves.

Allow free flow from Port A to B and offer leakage free closure in opposite direction.

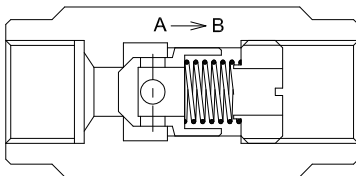
Two standard mounting styles:

- 1 ] In line mounting C \* T
- 2 ] Subplate mounting C \* S

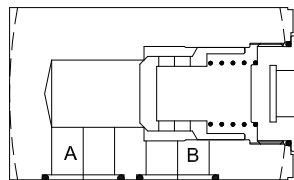


## Section

### Line mounting valves



### Subplate mounting valves



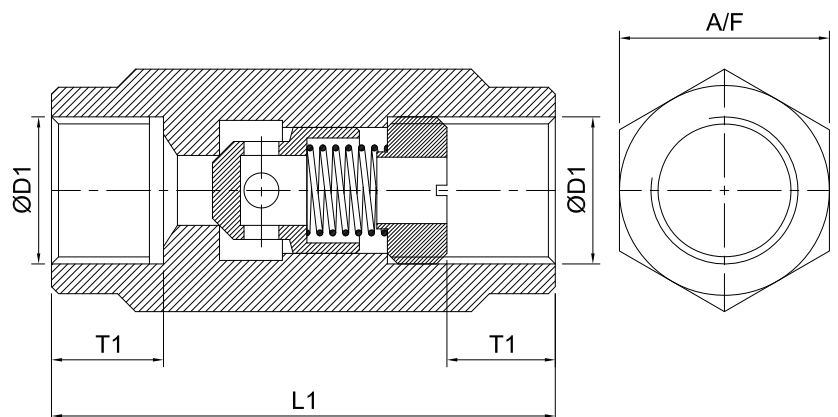
### Hydraulics Symbol



## Unit Dimensions

### Line mounting valves

NG	FLOW (LPM)	D1	D2	T1	L1	A/F
06	10	G 1/4"	18.5	12	58	19
08	20	G 3/8"	23	12	58	24
10	30	G 1/2"	29.5	14	72	30
16	80	G 3/4"	35.5	16	85	36
20	120	G 1"	45.5	18	98	46
25	220	G 1-1/4"	59.5	20	120	60
30	280	G 1-1/2"	64.5	22	132	65



## JACKTECH HYDRAULICS

Plot no.-433 G.I.D.C. Odhav  
Opp. Bhiksuk gruh  
Ahmedabad-382415 INDIA

Phone : +91-(0)79 22892302,03,04

Fax : +91-(0)79 22892305

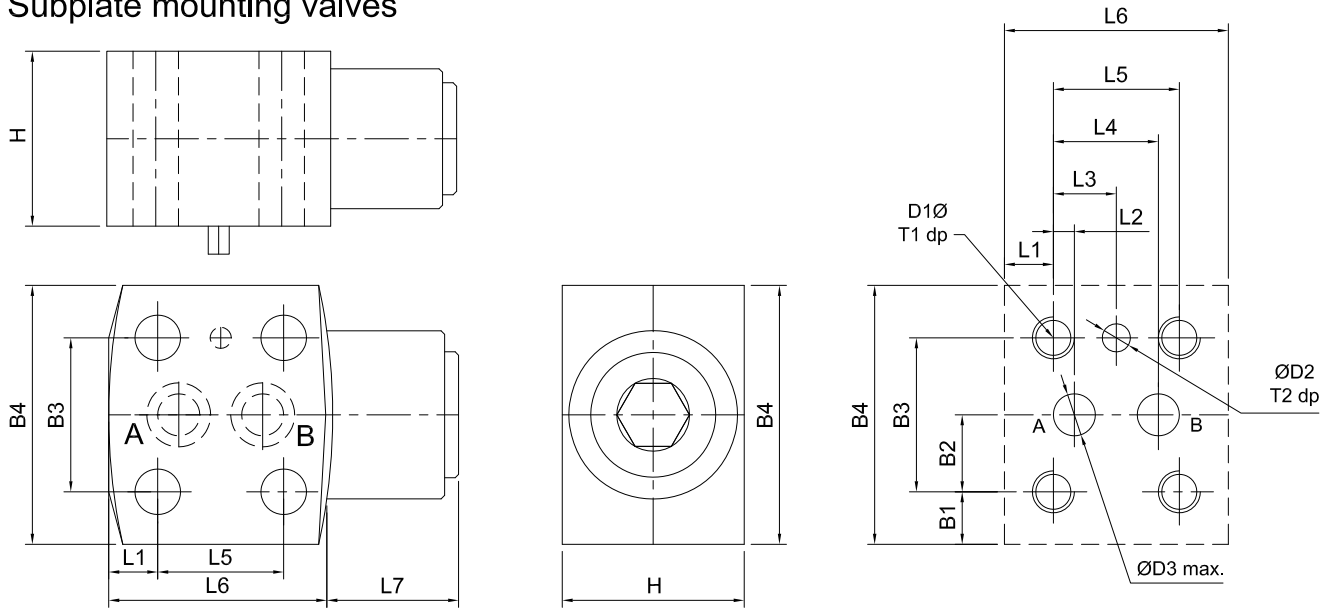
E-mail : info@jacktechhyd.com

Website : www.jacktechhyd.com



# CHECK VALVE ( C )

## Subplate mounting valves



SIZE NG	FLOW (LPM)	L1	L2	L3	L4	L5	L6	L7	H	B1	B2	B3	B4	D1	D2	D3	T1	T2
06	10	7	3	9	15	18	32	19	26	7.5	11	22	37	M6	4	6	12	5
10	30	9	6	16.5	27	33	51	23	38	9.5	18	36	55	M8	4	11	14	5
20	120	10	10	27.5	45	55	75	27	55	10	25	50	70	M10	7	22	19	8
30	280	15	20	42.5	65	85	123	34	82	15	37.5	75	105	M12	7	31	22	8

## Technical Specification

- Construction ..... Seat type.
- Mounting ..... In line or subplate mounting.
- Interface ..... Factory standard.
- Flow direction ..... Free flow from A to B.
- Operating pressure ..... 315 bar.
- Hydraulics medium ..... Mineral oil.
- Viscosity range ..... 10 cSt to 380 cSt.
- Fluid temperature range ..... -20°C to +70°C
- Fluid cleanliness requirement ..... As per ISO code 16/13 or better.
- Cracking pressure available ..... 0.5, 1.5, 3, 5 or 7 bar.

Mass in kg. (Inline mounting) .....

Size	06	08	10	15	20	25	30
Mass kg.	0.1	0.16	0.31	0.46	0.95	1.88	2.3

Mass in kg. (Subplate mounting) .....

Size	06	10	20	30
Mass kg.	0.27	1	2.8	8.15

Order code .....

C	06*	S / T	1*	03
---	-----	-------	----	----